

CITY OF SURREY

BY-LAW NO. 17942

A By-law to close and to remove the dedication  
of a highway of a portion of road

.....

WHEREAS pursuant to Subsection 40(1)(a) of the *Community Charter*, S.B.C. 2003, c. 26, the Council may, by bylaw, close all or part of a highway that is vested in the municipality to all or some types of traffic;

AND WHEREAS pursuant to Section 40(2) of the *Community Charter*, S.B.C. 2003, c. 26, the Council may, by bylaw, remove the dedication of a highway that has been closed by a bylaw under Subsection 40(1)(a).

NOW THEREFORE the Council of the City of Surrey, ENACTS as follows:

1. That portion of road on Plan 15093 Section 7 Township 2 New Westminster District dedicated as Road and shown outlined in heavy black line on Reference Plan EPP33238 attached hereto, prepared by Lakhjot Grewal, BCLS, on the 31st day of July, 2013 and described as follows:

That portion of Road dedicated by Plan 15093 and Plan EPP33238 containing 315.2 square metres shown as Parcel "A"

(hereinafter referred to as that portion of Road)

shall be closed to traffic.

2. The dedication as highway be removed of said portion of Road.
3. This By-law may be cited for all purposes as "Surrey Close and Remove the Dedication of Highway of a Portion of Road Adjacent to 5665 – 128 Street, By-law, 2013, No. 17942"

PASSED FIRST READING on the 9th day of September, 2013.


PASSED SECOND READING on the 9th day of September, 2013.

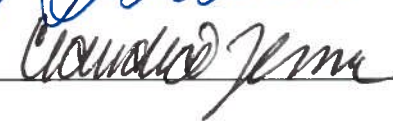
PASSED THIRD READING on the 9th day of September, 2013.

NOTICE OF INTENTION ADVERTISED on the 12th and 19th day of September, 2013 in the SURREY/NORTH DELTA LEADER and PEACE ARCH NEWS newspapers.

RECEIVED APPROVAL FROM THE MINISTRY OF TRANSPORTATION AND INFRASTRUCTURE on the 17th day of September, 2013.

RECONSIDERED AND FINALLY ADOPTED, signed by the Mayor and Clerk, and sealed with the Corporate Seal on the 23rd day of September, 2013.

  
\_\_\_\_\_  
MAYOR

  
\_\_\_\_\_  
CLERK



REFERENCE PLAN TO ACCOMPANY CITY OF SURREY ROAD CLOSURE AND  
 CANCELLATION BYLAW No. 17942 OF ROAD PREVIOUSLY THE NORTH 20 FEET  
 OF LOT 6 PLAN 15093, SECTION 7 TOWNSHIP 2 NEW WESTMINSTER DISTRICT

PLAN EPP33238

PURSUANT TO SECTION 120 OF THE LAND TITLE ACT  
 PURSUANT TO SECTION 40 OF THE COMMUNITY CHARTER  
 S.C.S. 826.018

INTEGRATED SURVEY AREA NO. 1,  
 CITY OF SURREY, NAD83 (CSRS)

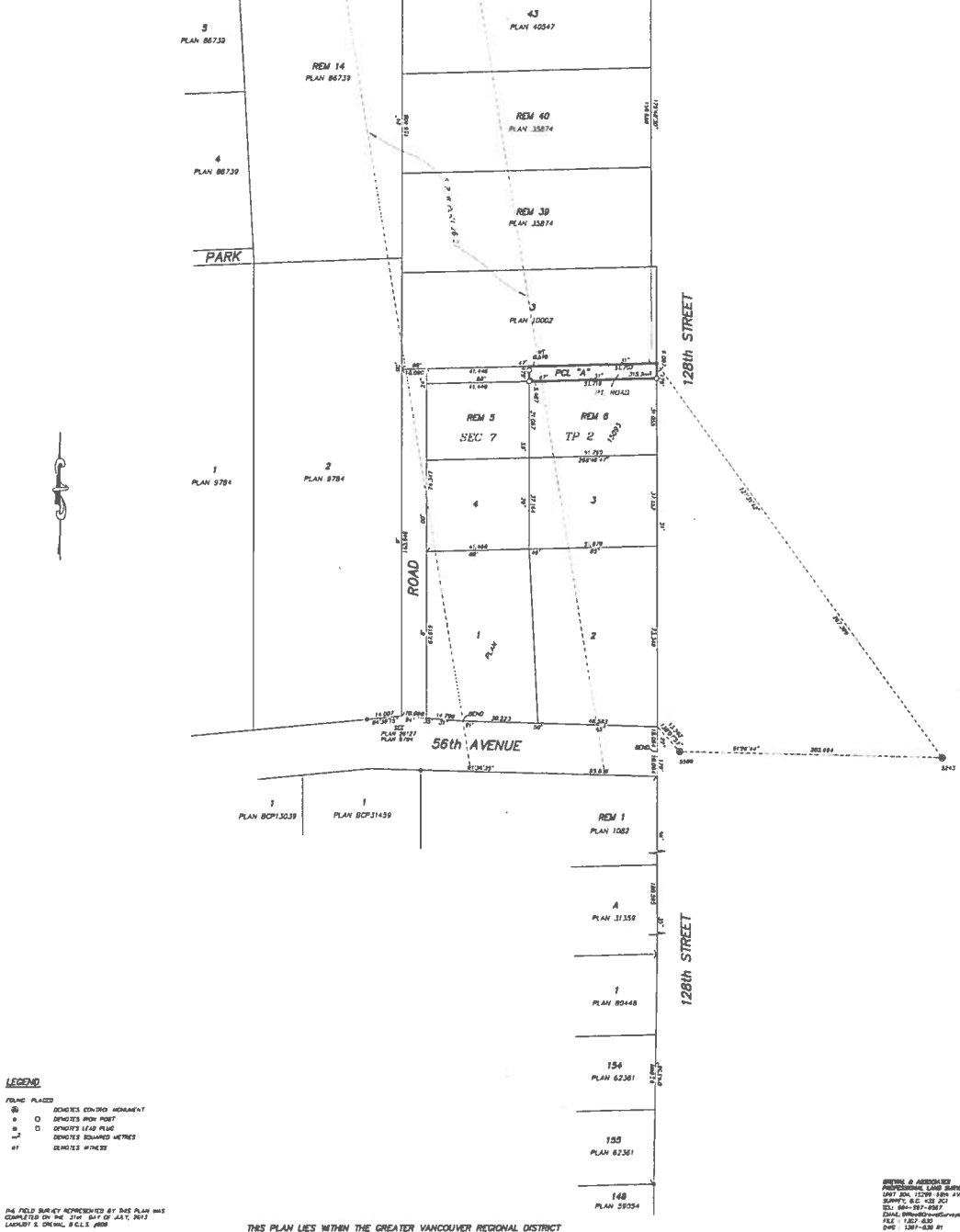
SCALE 1 : 750 DISTANCES ARE IN METRES

THE INTENDED PLAT SIZE OF THIS PLAN  
 IS 889MM BY 1275MM BY 25MM BY 25MM  
 (SIZE D) WHEN PLOTTED AT A SCALE OF 1:750

2ND ORDERING ARE DERIVED FROM OBSERVATIONS BETWEEN  
 GEODETIC CONTROL MONUMENTS 5889 AND 5213

THE PLAN SHOWS HORIZONTAL CONTROL (LINES) DISTANCES UNLESS  
 OTHERWISE SPECIFIED. TO COMPLETE THIS DISTANCE, ALL OF  
 THE DISTANCES OF THIS PLAN HAVE BEEN OBTAINED FROM  
 SURVEYS WHICH HAVE BEEN REVIEWED FROM GEODETIC CONTROL  
 MONUMENTS 5889 AND 5213

THIS PLAN SHOWS ONE OR MORE BENCHMARK POINTS WHICH ARE  
 NOT SET OUT ON THE FIELD CORNER



**LEGEND**

FOUND PLACES

- BENCHES CONTROL MONUMENT
- BENCHES IRON POST
- BENCHES LEAD PLUG
- BENCHES SQUARE METRES
- # BENCHES METRES

THE FIELD SURVEY REFERENCED BY THIS PLAN WAS  
 COMPLETED ON THE 17th DAY OF JULY, 2013  
 LARRY S. ORLAND, S.C.L.S. 6088

THIS PLAN LIES WITHIN THE GREATER VANCOUVER REGIONAL DISTRICT

REGISTERED PROFESSIONAL LAND SURVEYOR  
 UNIT NO. 12299 10th AVENUE  
 SURREY, B.C. V3R 4C1  
 TEL: 866-997-8987  
 EMAIL: LORLAND@LORLANDSURVEYORS.COM  
 FAX: 1-877-630-3100  
 DPO: 1387-438 B1