

CITY OF SURREY

BY-LAW NO. 17941

A By-law to close and to remove the dedication  
of a highway of a portion of road

.....

WHEREAS pursuant to Subsection 40(1)(a) of the *Community Charter*, S.B.C. 2003, c. 26, the Council may, by bylaw, close all or part of a highway that is vested in the municipality to all or some types of traffic;

AND WHEREAS pursuant to Section 40(2) of the *Community Charter*, S.B.C. 2003, c. 26, the Council may, by bylaw, remove the dedication of a highway that has been closed by a bylaw under Subsection 40(1)(a).

NOW THEREFORE the Council of the City of Surrey, ENACTS as follows:

1. That portion of road on Plan 2840 Section 9 Township 2 New Westminster District dedicated as Road and shown outlined in heavy black line on Reference Plan EPP31741 attached hereto, prepared by James G. Shaw, BCLS, on the 4th day of June, 2013 and described as follows:

That portion of Road dedicated by Plan 2840 and Plan EPP31741 containing 527.8 square metres

(hereinafter referred to as that portion of Road)

shall be closed to traffic.

2. The dedication as highway be removed of said portion of Road.
3. This By-law may be cited for all purposes as "Surrey Close and Remove the Dedication of Highway of a Portion of Road Adjacent to 6018 – 138 Street, By-law, 2013, No. 17941"

PASSED FIRST READING on the 9th day of September, 2013.

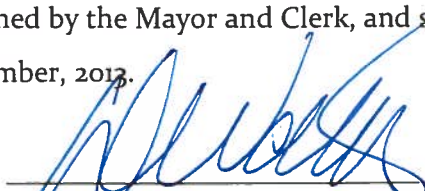
PASSED SECOND READING on the 9th day of September, 2013.


PASSED THIRD READING on the 9th day of September, 2013.

NOTICE OF INTENTION ADVERTISED on the 12th and 19th day of September, 2013 in the SURREY/NORTH DELTA LEADER and PEACE ARCH NEWS newspapers.

RECEIVED APPROVAL FROM THE MINISTRY OF TRANSPORTATION AND INFRASTRUCTURE on the 16th day of September, 2013.

RECONSIDERED AND FINALLY ADOPTED, signed by the Mayor and Clerk, and sealed with the Corporate Seal on the 23rd day of September, 2013.

  
\_\_\_\_\_  
MAYOR

  
\_\_\_\_\_  
CLERK



REFERENCE PLAN OF PART OF ROAD IN SECTION 9 TOWNSHIP 2  
 NEW WESTMINSTER DISTRICT DEDICATED ROAD ON PLAN 2840 TO  
 ACCOMPANY CITY OF SURREY HIGHWAY DEDICATION CANCELLATION  
 BY-LAW NO. 17941

PLAN EPP31741

PURSUANT TO SECTION 40 OF THE COMMUNITY CHARTER AND SECTION 120 OF THE LAND TITLE ACT.  
 BCDS 926.016



ALL DISTANCES ARE, UNLESS AND OTHERWISE STATED,  
 IN METERS AND ALL ANGLES ARE IN DEGREES.  
 THE PLAN SHOWS HORIZONTAL DISTANCES UNLESS  
 OTHERWISE SPECIFIED. TO COMPUTE CURVE DISTANCES MULTIPLY  
 RADIUS-LENGTH DISTANCES BY THE ARC LENGTH FORMULA BY  
 DIVIDING THE RADIUS BY THE SINE OF HALF THE CENTRAL ANGLE.

LEGEND

INTEGRATED SURVEY AREA NO. 1 (MUNICIPALITY OF SURREY) MARKS (CSRS).

DEVIATIONS ARE DENIED FROM LOCAL FREQUENCY RANGE GPS  
 OBSERVATIONS BETWEEN BASELINE AND 1 TO HUB 7 AND SURVEY  
 POINTS, AS PER CONTROL POINT.

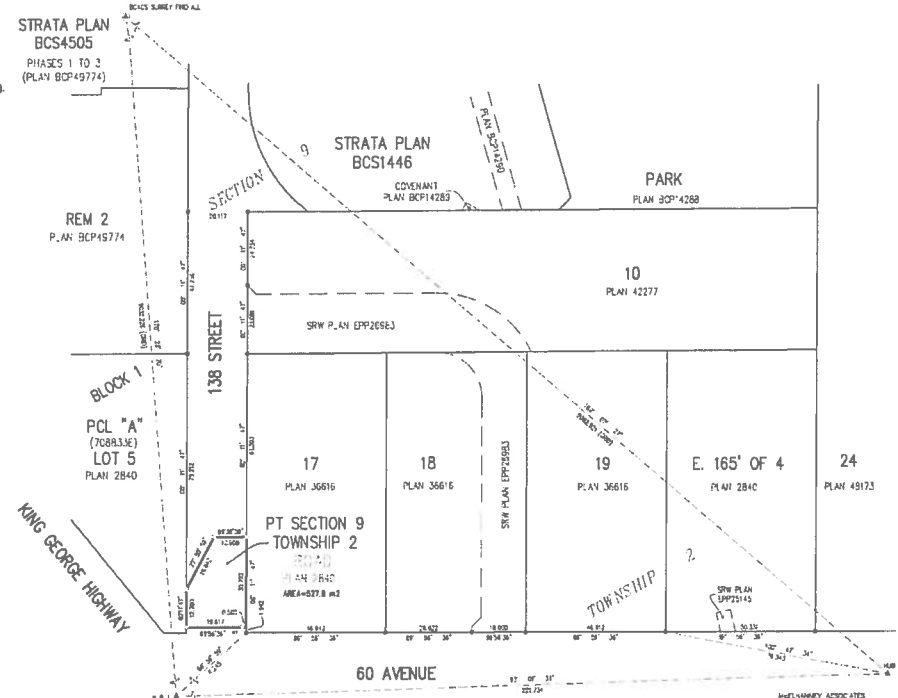
SYMBOLS	DESCRIPTION
AS	ADJUSTED POINT
BS	BENCH MARK
CS	CONTROL POINT
EM	EMERGENCY MARK
FM	FOUNDATION MARK
GM	GROUND MARK
HM	HORIZONTAL MARK
IM	INTERIOR MARK
JM	JUNCTION MARK
LM	LOCAL MARK
MM	MARK
SM	SURVEY MARK
TM	TOWNSHIP MARK
UM	UTILITY MARK
VM	VEGETATION MARK
WM	WATER MARK
YM	YIELD MARK
ZM	ZONING MARK

NOTE: THIS PLAN IS FOR THE USE OF THE CITY OF SURREY AND IS NOT TO BE USED FOR ANY OTHER PURPOSE.  
 SOME SYMBOLS AND LINES MAY BE DISAPPEARED FOR  
 CLARITY.



THE FIELD SURVEY REPRESENTED BY THIS PLAN WAS  
 COMPLETED ON THE 24th DAY OF JUNE, 2013.  
 JAMES R. SMITH, B.S., C.S., P.E.

THIS PLAN LIES WITHIN THE GREATER VANCOUVER REGIONAL DISTRICT - CITY OF SURREY



JAMES R. SMITH ASSOCIATES  
 LAND SURVEYORS LTD.  
 2780, 13450 137 AVENUE  
 SURREY, BC V3V 2A3  
 TEL: 604-596-8381  
 FAX: 714-608-0808  
 EPP DATE: JUNE 7, 2013