

CITY OF SURREY

BY-LAW NO. 17887

A By-law to close and to remove the dedication  
of a highway of a portion of road  
.....

WHEREAS pursuant to Subsection 40(1)(a) of the *Community Charter*, S.B.C. 2003, c. 26, the Council may, by by-law, close all or part of a highway that is vested in the municipality to all or some types of traffic;

AND WHEREAS pursuant to Section 40(2) of the *Community Charter*, S.B.C. 2003, c. 26, the Council may, by by-law, remove the dedication of a highway that has been closed by a by-law under Subsection 40(1)(a).

NOW THEREFORE the Council of the City of Surrey, ENACTS as follows:

1. That portion of road in Section 16 Township 8 New Westminster District, outlined in heavy black line on Reference Plan EPP28961, prepared by John Onderwater, B.C.L.S., on March 5, 2013 and described as follows:

That portion of Road dedicated by Plan 14499, called Parcel '1' and containing 95.0 square metres; and

(hereinafter referred to as that portion of Road)

shall be closed to traffic.

2. The dedication as highway be removed of said portion of Road.
3. This By-law may be cited for all purposes as "Surrey Close and Remove the Dedication of Highway of a Portion of Road Adjacent to 68 Avenue and 18625 Fraser Highway, By-law, 2013, No. 17887".

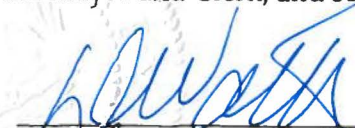
PASSED FIRST READING on the 8th day of April, 2013.

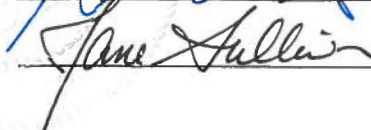
PASSED SECOND READING on the 8th day of April, 2013.

PASSED THIRD READING on the 8th day of April, 2013.

NOTICE OF INTENTION ADVERTISED on the 11th and 18th day of April, 2013 in the SURREY/NORTH DELTA LEADER and PEACE ARCH NEWS newspaper.

RECONSIDERED AND FINALLY ADOPTED, signed by the Mayor and Clerk, and sealed with the Corporate Seal on the 22nd day of April, 2013.

  
\_\_\_\_\_  
MAYOR

  
\_\_\_\_\_  
CLERK

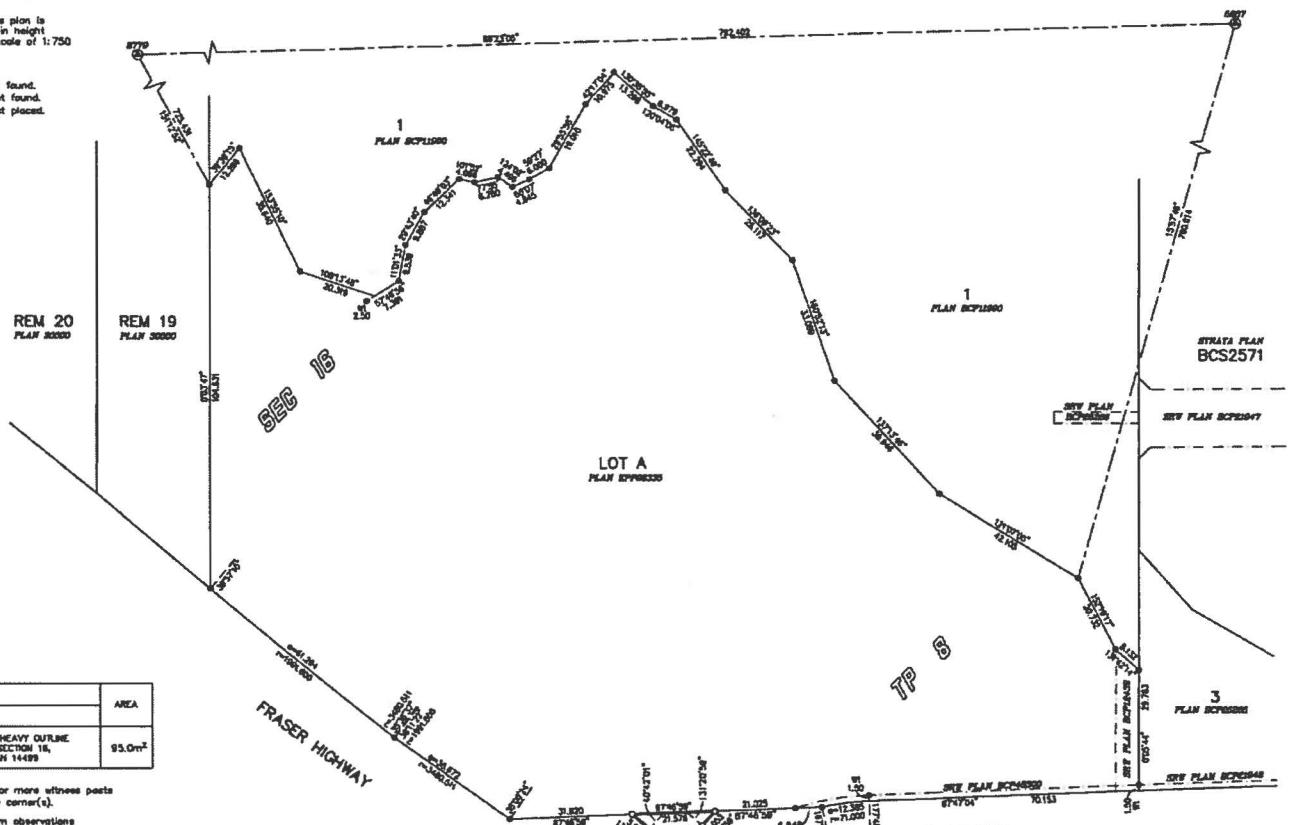
**REFERENCE PLAN TO ACCOMPANY CITY OF SURREY ROAD CLOSURE AND CANCELLATION BYLAW NO. 17887 OF PART OF ROAD DEDICATED BY PLAN 14499 SECTION 16 TOWNSHIP 8 NEW WESTMINSTER DISTRICT.**

**PLAN EPP28961**

PURSUANT TO SECTION 120 OF THE LAND TITLES ACT  
PURSUANT TO SECTION 40 OF THE COMMUNITY CHARTER  
**BOGS 82G.017**

10 7.5 5 2.5 0  
All Distances are in Metres.  
The intended plot size of this plan is 560mm in width by 432mm in height (C size) when plotted at a scale of 1:750

**LEGEND:**  
 ⊕ Denotes Control Monument found.  
 ⊙ Denotes Standard Iron Post found.  
 ○ Denotes Standard Iron Post placed.



BOOK OF REFERENCE	AREA
LEGAL DESCRIPTION	
ROAD BEING CLOSED SHOWN IN HEAVY OUTLINE AND AS PARCEL '1', ROAD IN SECTION 16, TOWNSHIP 8, DEDICATED BY PLAN 14499	93.0m <sup>2</sup>

Note: This plan shows one or more witness posts that are not set on the true corner(s).  
 Grid Bearings are derived from observations between geodetic control monuments 8779 & 5687  
Integrated Surrey Area No. 1  
City of Surrey NAD83 (CSRS)  
 This plan shows horizontal ground level distances except where otherwise noted. To compute grid distances multiply ground-level distances by the average combined factor of 0.99925084 which has been derived from control monuments 8779 & 5687

Underwater Land Surveying Ltd.  
 B.C. Land Surveyors  
 896-8820 1786 Street  
 Cloverdale BC  
 PLE: 88140\_RCL

*This Plan Lies Within The Greater Vancouver Regional District*

The field survey represented by this plan was completed on the 5th day of March, 2013.  
 John P. Underwater, BCLS