

CITY OF SURREY

BY-LAW NO. 17689

A By-law to close and to remove the dedication  
of a highway of a portion of road  
.....

WHEREAS pursuant to Subsection 40(1)(a) of the *Community Charter*, S.B.C. 2003, c. 26, the Council may, by by-law, close all or part of a highway that is vested in the municipality to all or some types of traffic;

AND WHEREAS pursuant to Section 40(2) of the *Community Charter*, S.B.C. 2003, c. 26, the Council may, by by-law, remove the dedication of a highway that has been closed by a by-law under Subsection 40(1)(a).

NOW THEREFORE the Council of the City of Surrey in open meeting assembled, ENACTS as follows:

1. That portion of Section 9, Township 2, New Westminster District shown outlined on Reference Plan attached hereto, prepared by Sean Costello, BCLS, on the 27th day of August, 2012 and described as follows:

That portion of Road dedicated by New Westminster District Plans 2513 and 2614 and containing 1,370 square metres; and

That portion of Road dedicated by New Westminster District Plan 40335 and containing 1,430 square metres;

(hereinafter referred to as that portion of Road)

shall be closed to traffic.

2. The dedication as highway be removed of said portions of Road.
3. This By-law may be cited for all purposes as "Surrey Close and Remove the Dedication of Highway of a Portion of Road Adjacent to 5814, 5836, and 5860 King George Boulevard and 5821 - 140 Street By-law, 2012, No. 17689".

PASSED FIRST READING on the 22<sup>nd</sup> day of October, 2012.

PASSED SECOND READING on the 22<sup>nd</sup> day of October, 2012.

PASSED THIRD READING on the 22<sup>nd</sup> day of October, 2012.

NOTICE OF INTENTION

ADVERTISED on the 25<sup>th</sup> day of October and 1<sup>st</sup> day of November, 2012 in the SURREY/NORTH DELTA LEADER and PEACE ARCH NEWS newspaper.

RECONSIDERED AND FINALLY ADOPTED, signed by the Mayor and Clerk, and sealed with the Corporate Seal on the 5th day of November, 2012.

\_\_\_\_\_ MAYOR

\_\_\_\_\_ CLERK

REFERENCE PLAN OF PART OF ROAD IN SECTION 9 TOWNSHIP 2 NEW WESTMINSTER DISTRICT  
 DEDICATED ROAD ON PLANS 2513, 2614 AND 40335 TO ACCOMPANY CITY OF SURREY HIGHWAY  
 DEDICATION CANCELLATION BY-LAW NO. 17689

PLAN EPP23812

PURSUANT TO SECTION 40 OF THE COMMUNITY CHARTER AND SECTION 120 OF THE LAND TITLE ACT  
 BCOS 926.016

SCALE 1 : 1000



ALL DISTANCES ARE IN METRES AND DECIMALS THEREOF  
 THE INTENDED PLOT SIZE OF THIS PLAN IS 560mm IN WIDTH  
 BY 864mm IN HEIGHT (D SIZE) WHEN PLOTTED AT A SCALE OF 1:1000  
 INTEGRATED SURVEY AREA No.1 (MUNICIPALITY OF SURREY) NO.033 (CSRS)

GRID BEARINGS ARE DERIVED FROM OBSERVATIONS BETWEEN GEODETIC  
 CONTROL MONUMENTS 5463 AND 8042077

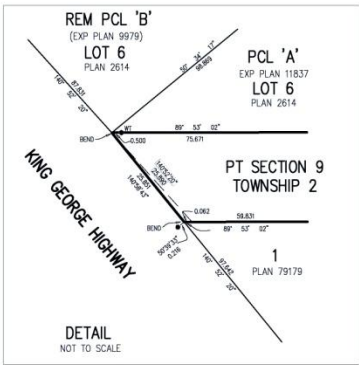
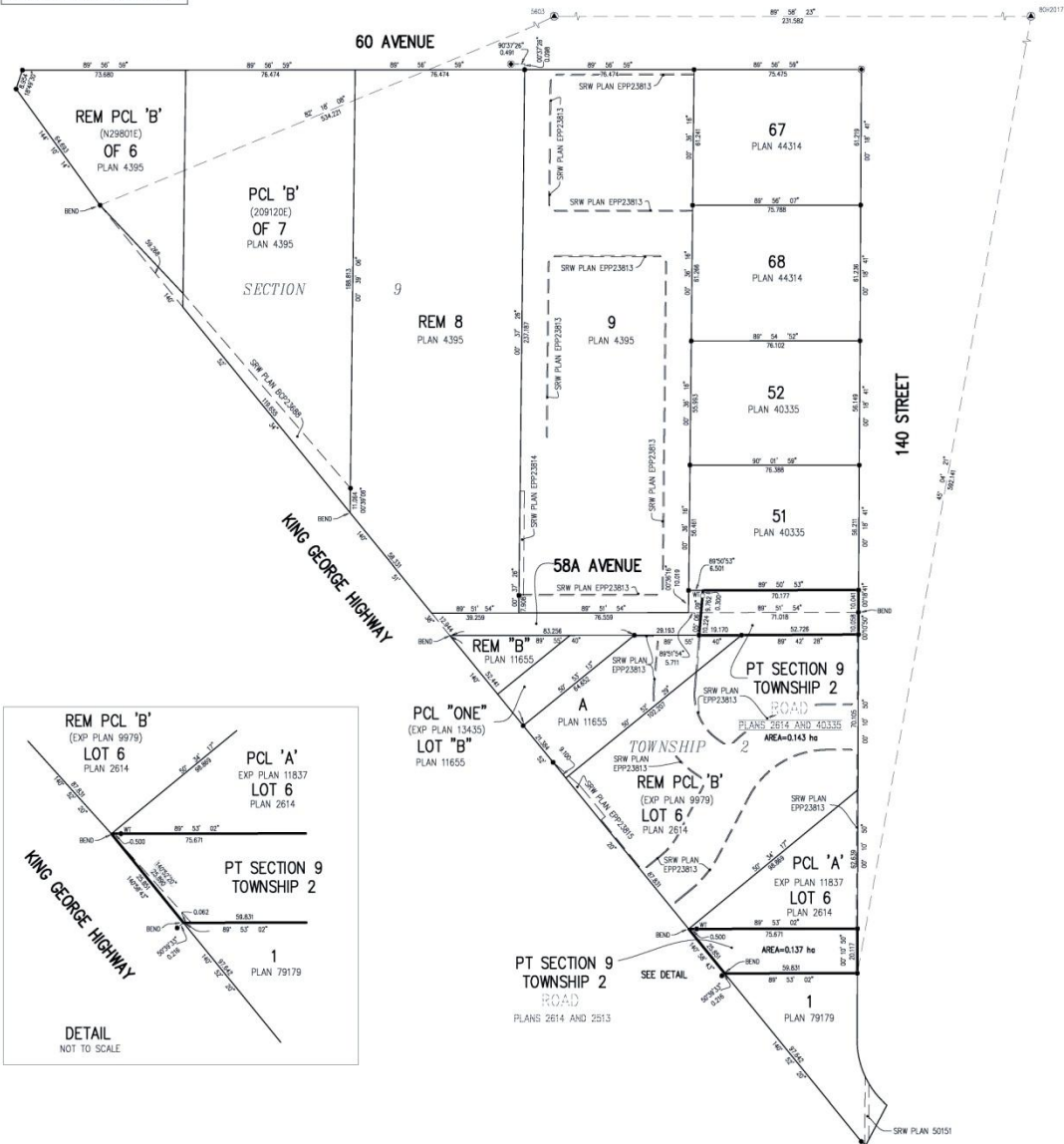
THIS PLAN SHOWS HORIZONTAL GROUND-LEVEL DISTANCES UNLESS OTHERWISE SPECIFIED. TO  
 COMPUTE GRID BEARINGS MULTIPLY GROUND-LEVEL DISTANCES BY THE AVERAGE CORRECTION FACTOR  
 OF 0.9999508 WHICH HAS BEEN DERIVED FROM MONUMENTS 5463 AND 8042077

LEGEND

SYMBOLS	DESCRIPTION
FOUND PLACES	
▲	CONTROL MONUMENT
○	STANDARD IRON POST
●	NON-STANDARD IRON POST
ha	DENOTES HECTARE
REM	DENOTES REMAINDER
EXP	DENOTES EXPIRATORY
PT	DENOTES PART
PCL	DENOTES PARCEL
WT	DENOTES WITNESS



NOTES  
 THIS PLAN SHOWS ONE OR MORE WITNESS POSTS WHICH ARE  
 NOT SET ON THE TRUE CORNERS.  
 SOME SYMBOLS AND LINES MAY BE OMISSIONS FOR CLARITY



THE FIELD SURVEY REPRESENTED BY THIS PLAN WAS  
 COMPLETED ON THE 27th DAY OF AUGUST, 2012.  
 BY SEAN COSTELLO, BCLS