

CITY OF SURREY

BY-LAW NO. 17677

A By-law to close and to remove the dedication
of a highway of a portion of road
.....

WHEREAS pursuant to Subsection 40(1)(a) of the *Community Charter*, S.B.C. 2003, c. 26, the Council may, by by-law, close all or part of a highway that is vested in the municipality to all or some types of traffic;

AND WHEREAS pursuant to Section 40(2) of the *Community Charter*, S.B.C. 2003, c. 26, the Council may, by by-law, remove the dedication of a highway that has been closed by a by-law under Subsection 40(1)(a).

NOW THEREFORE the Council of the City of Surrey in open meeting assembled, ENACTS as follows:

1. That portion of Section 10, Block 5 North, Range 2 West, New Westminster District dedicated as Road on Plan 79454, shown outlined on Reference Plan attached hereto, prepared by Gregory Marston, BCLS, on the 22nd day of August, 2012 and described as follows:

That portion of Road dedicated by Bylaw Reference Plan EPP 23457, called Parcel 1 and containing 144.9 square metres,

(hereinafter referred to as that portion of Road)

shall be closed to traffic.

2. The dedication as highway be removed of said portions of Road.
3. This By-law may be cited for all purposes as "Surrey Close and Remove the Dedication of Highway of a Portion of Road Adjacent to 11531 – 134 Street By-law, 2012, No. 17677".

PASSED FIRST READING on the 1st day of October, 2012.

PASSED SECOND READING on the 1st day of October, 2012.

PASSED THIRD READING on the 1st day of October, 2012.

NOTICE OF INTENTION

ADVERTISED on the 11th and 18th day of October, 2012 in the SURREY/NORTH DELTA LEADER and PEACE ARCH NEWS newspaper.

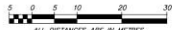
RECONSIDERED AND FINALLY ADOPTED, signed by the Mayor and Clerk, and sealed with the Corporate Seal on the 22nd day of October, 2012.

_____ MAYOR

_____ CLERK

REFERENCE PLAN TO ACCOMPANY CITY OF SURREY HIGHWAY DEDICATION CANCELLATION BYLAW NO. 17677 OF A PORTION OF SECTION 10, BLOCK 5 NORTH, RANGE 2 WEST, NEW WESTMINSTER DISTRICT, SHOWN ROAD ON PLAN 79454

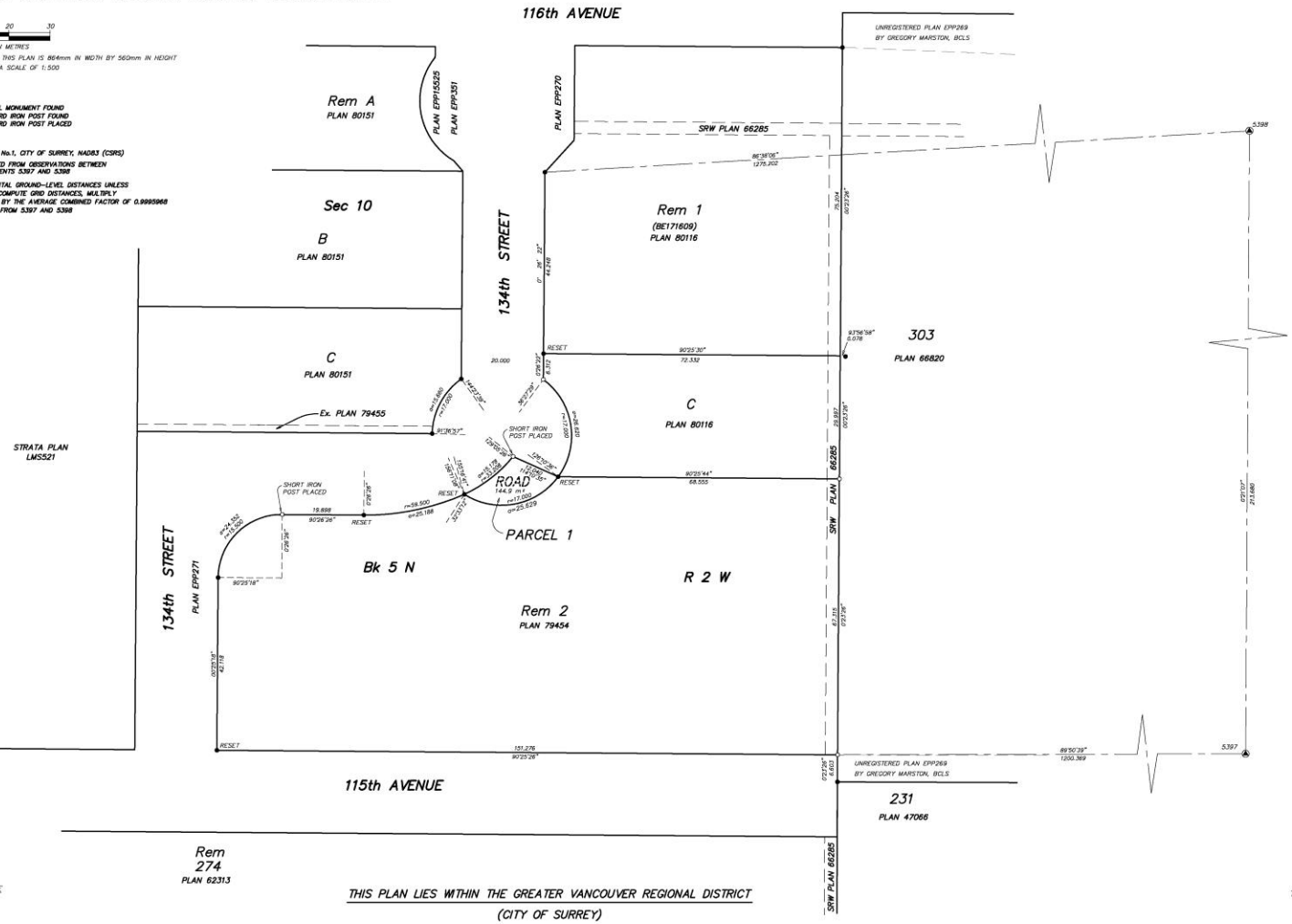
PURSUANT TO SECTION 120 OF THE LAND TITLE ACT AND SECTION 40 OF THE COMMUNITY CHARTER B.C.G.S. 926.026



ALL DISTANCES ARE IN METRES THE INTENDED PLOT SIZE OF THIS PLAN IS 864mm IN WIDTH BY 560mm IN HEIGHT (D SIZE) WHEN PLOTTED AT A SCALE OF 1:500

- LEGEND :**
- Ⓞ INDICATES CONTROL MONUMENT FOUND
 - ⊕ INDICATES STANDARD IRON POST FOUND
 - INDICATES STANDARD IRON POST PLACED

INTEGRATED SURVEY AREA No.1, CITY OF SURREY, MAD3 (CSRS) GRID BEARINGS ARE DERIVED FROM OBSERVATIONS BETWEEN GEODETIC CONTROL MONUMENTS 5397 AND 5398 THIS PLAN SHOWS HORIZONTAL GROUND-LEVEL DISTANCES UNLESS OTHERWISE SPECIFIED. TO COMPUTE GRID DISTANCES, MULTIPLY GROUND-LEVEL DISTANCES BY THE AVERAGE CORRECTION FACTOR OF 0.9999986 WHICH HAS BEEN DERIVED FROM 5397 AND 5398



MURRAY & ASSOCIATES 201-12448, 82nd AVENUE SURREY, B.C. V3W 3E9 (604) 582-8188

THIS PLAN LIES WITHIN THE GREATER VANCOUVER REGIONAL DISTRICT (CITY OF SURREY)

THE FIELD SURVEY REPRESENTED BY THIS PLAN WAS COMPLETED BY GREGORY MARSTON, BCLS ON THE 22nd DAY OF AUGUST 2012