

CITY OF SURREY

BY-LAW NO. 17676

A By-law to close and to remove the dedication
of a highway of a portion of road
.....

WHEREAS pursuant to Subsection 40(1)(a) of the *Community Charter*, S.B.C. 2003, c. 26, the Council may, by by-law, close all or part of a highway that is vested in the municipality to all or some types of traffic;

AND WHEREAS pursuant to Section 40(2) of the *Community Charter*, S.B.C. 2003, c. 26, the Council may, by by-law, remove the dedication of a highway that has been closed by a by-law under Subsection 40(1)(a).

NOW THEREFORE the Council of the City of Surrey in open meeting assembled, ENACTS as follows:

1. That portion of Section 16, Block 5 North, Range 1 West, New Westminster District dedicated as Road on Plan EPP4960, shown outlined on Reference Plan attached hereto, prepared by Jason G. Hamel, BCLS, on the 16th day of April, 2012 and described as follows:

That portion of Road dedicated by Bylaw Reference Plan EPP7185, called Parcel A and containing 77.6 square metres;

That portion of Road dedicated by Bylaw Reference Plan EPP7185, called Parcel B and containing 172.1 square metres;

That portion of Road dedicated by Bylaw Reference Plan EPP7185, called Parcel C and containing 388.3 square metres; and

That portion of Road dedicated by Bylaw Reference Plan EPP7185, called Parcel D and containing 278.4 square metres;

(hereinafter referred to as that portion of Road)

shall be closed to traffic.

2. The dedication as highway be removed of said portions of Road.
3. This By-law may be cited for all purposes as "Surrey Close and Remove the Dedication of Highway of a Portion of Road Adjacent to 11102 – 152A Street, 11112 – 152 Street, 11132 – 152 Street and 15218 – 111A Avenue By-law, 2012, No. 17676".

PASSED FIRST READING on the 1st day of October, 2012.

PASSED SECOND READING on the 1st day of October, 2012.

PASSED THIRD READING on the 1st day of October, 2012.

NOTICE OF INTENTION

ADVERTISED on the 11th and 18th day of October 22nd, 2012 in the SURREY/NORTH DELTA LEADER and PEACE ARCH NEWS newspaper.


RECONSIDERED AND FINALLY ADOPTED, signed by the Mayor and Clerk, and sealed with the Corporate Seal on the 22nd day of October, 2012.

_____ MAYOR

_____ CLERK

**REFERENCE PLAN TO ACCOMPANY
BYLAW NO. 17676, THE CITY OF SURREY
TO CLOSE ROAD DEDICATED ON
PLAN EPP4960 SECTION 16 BLOCK 5 NORTH
RANGE 1 WEST NEW WESTMINSTER DISTRICT**

BCGS 92G.026 AND 92G.027
PURSUANT TO SECTION 120 OF THE LAND TITLE ACT &
PURSUANT TO SECTION 40 OF THE COMMUNITY CHARTER



DISTANCES ARE IN METRES

THE INTENDED PLOT SIZE OF THIS PLAN IS 864mm IN WIDTH BY
566mm IN HEIGHT (D SIZE), WHEN PLOTTED AT A SCALE OF 1:250

INTEGRATED SURVEY AREA NO.1, CITY OF SURREY
MANS(CORP) 4.03.03(1.06)

GIRD BEARINGS ARE DERIVED FROM OBSERVATIONS
BETWEEN GEODETIC CONTROL MONUMENTS
5281 AND 92H0905

THIS PLAN SHOWS HORIZONTAL GROUND-LEVEL DISTANCES UNLESS OTHERWISE
SPECIFIED. TO COMPUTE GRID DISTANCES, MULTIPLY GROUND-LEVEL
DISTANCES BY THE AVERAGE CORRECTION FACTOR OF 0.999992
WHICH HAS BEEN DERIVED FROM ODN5 5281 AND 92H0905.

NOTE:
THIS PLAN SHOWS ONE OR MORE WITNESS POSTS WHICH ARE
NOT SET ON THE TRUE CORNER

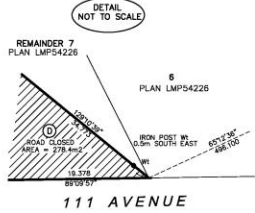
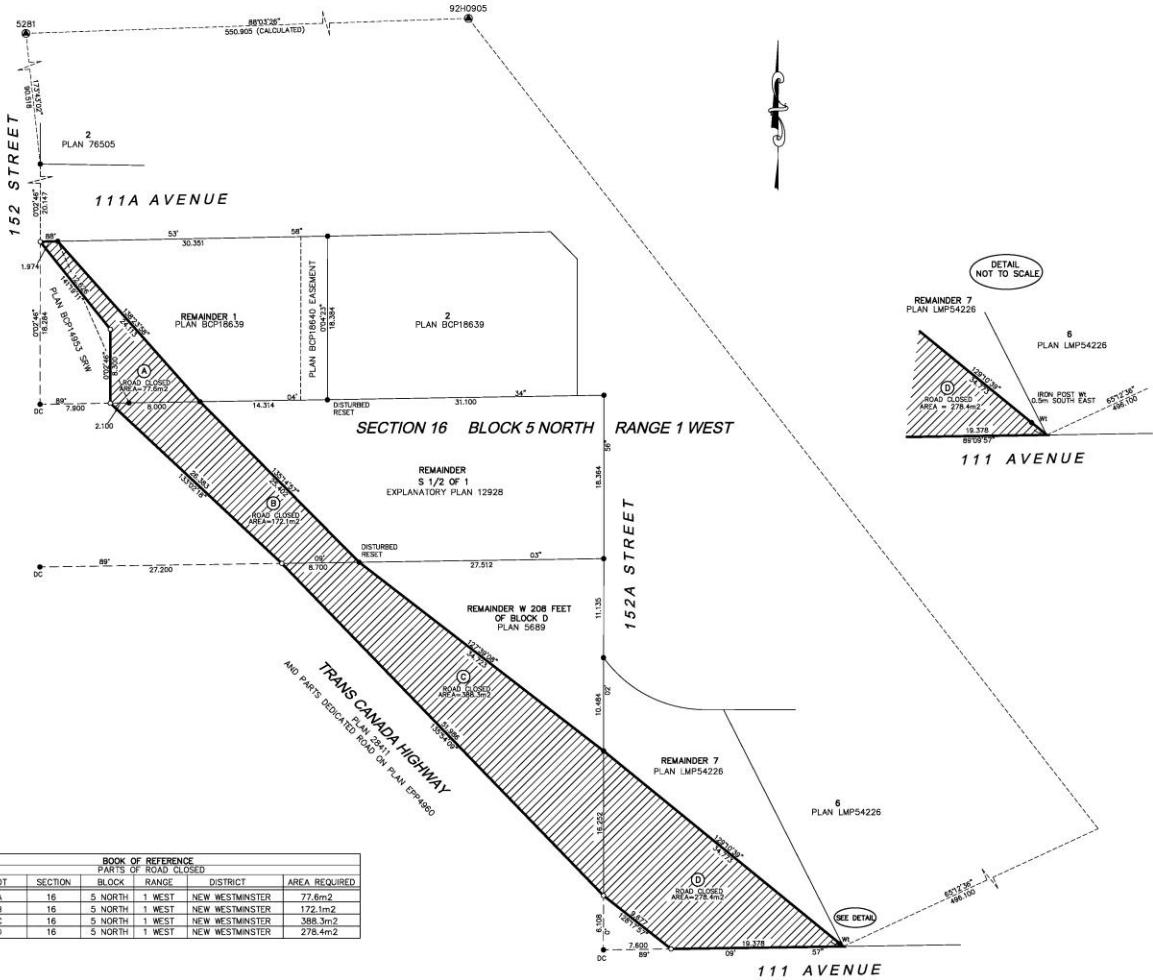
LEGEND

- DENOTES CONTROL MONUMENT FOUND
- DENOTES STANDARD IRON POST FOUND
- DENOTES STANDARD IRON POST PLACED
- DENOTES SQUARE METRES
- DC DENOTES DESTROYED DURING CONSTRUCTION
- W DENOTES WITNESS

THIS PLAN LIES WITHIN THE JURISDICTION OF THE APPROVING
OFFICER FOR THE CITY OF SURREY

THIS PLAN LIES WITHIN THE GREATER VANCOUVER REGIONAL DISTRICT

THE FIELD SURVEY REPRESENTED BY THIS PLAN WAS COMPLETED
BY JASON G. HAMEL, BOLS ON THE 4TH DAY OF JULY, 2012.



BOOK OF REFERENCE						
PARTS OF ROAD CLOSED						
LOT	SECTION	BLOCK	RANGE	DISTRICT	AREA REQUIRED	
A	16	5 NORTH	1 WEST	NEW WESTMINSTER	77.6m ²	
B	16	5 NORTH	1 WEST	NEW WESTMINSTER	172.3m ²	
C	16	5 NORTH	1 WEST	NEW WESTMINSTER	388.3m ²	
D	16	5 NORTH	1 WEST	NEW WESTMINSTER	278.4m ²	