

CITY OF SURREY

BY-LAW NO. 17366

A By-law to close and to remove the dedication
of a highway of portions of
.....

WHEREAS pursuant to Subsection 40(1)(a) of the *Community Charter*, S.B.C. 2003, c. 26, the Council may, by by-law, close all or part of a highway that is vested in the municipality to all or some types of traffic;

AND WHEREAS pursuant to Section 40(2) of the *Community Charter*, S.B.C. 2003, c. 26, the Council may, by by-law, remove the dedication of a highway that has been closed by a by-law under Subsection 40(1)(a).

NOW THEREFORE the Council of the City of Surrey in open meeting assembled, ENACTS as follows:

1. Those portions of road lying in Section 27, Block 5 North, Range 2 West, NWD shown outlined in heavy black line on a Reference Plan attached hereto, and forming part of this by-law, duly signed by the Mayor and Clerk, prepared by Scott E. Netherton, B.C.L.S. on the 3rd day of January, 2011, and more particularly described as follows:

That portion of road dedicated by Plan 18639 containing 857.3 square metres; and

That portion of road dedicated by Reference Plan 6698 containing 382.8 square metres; and

That portion of road dedicated by Plan 1726 containing 146.8 square metres,
collectively called Parcel 'A'

(hereinafter referred to as those portions of Road)

shall be closed to traffic.

2. The dedication as highway be removed of said portions of Road.
3. This By-law may be cited for all purposes as "Surrey Close and Remove the Dedication of Highway of a Portion of University Drive and a Public Lane South of 104 Avenue between University Drive and City Parkway By-law, 2011, No. 17366"

READ A FIRST, SECOND AND THIRD TIME on the 28th day of February 2011.

NOTICE OF INTENTION

ADVERTISED on the 4th and 11th day of March 2011, in the SURREY LEADER newspaper.

RECONSIDERED AND FINALLY ADOPTED, signed by the Mayor and Clerk, and sealed with the Corporate Seal on the 14th day of March, 2011.

_____ MAYOR

_____ CLERK

REFERENCE PLAN TO ACCOMPANY CITY OF SURREY HIGHWAY
DEDICATION CANCELLATION BYLAW NO. 1734 OF
PORTIONS OF ROAD LYING IN SECTION 27 BLOCK 5 NORTH RANGE 2 WEST
NEW WESTMINSTER DISTRICT

BCGS 92G.016

PURSUANT TO SECTION 40, COMMUNITY CHARTER

LEGEND

- EXISTING CONCRETE ROADWAY
- EXISTING ASPHALT ROADWAY
- EXISTING GRAVEL ROADWAY
- EXISTING DIRT ROADWAY

UNDEVELOPED STREET AREA NO. 1, SURREY MODEL (SMB)

ONE LANEWAY AND ONE SIDEWALK OR ONE LANEWAY AND ONE SIDEWALK AND ONE SIDEWALK

ONE LANEWAY AND ONE SIDEWALK AND ONE SIDEWALK AND ONE SIDEWALK

ONE LANEWAY AND ONE SIDEWALK AND ONE SIDEWALK AND ONE SIDEWALK

ONE LANEWAY AND ONE SIDEWALK AND ONE SIDEWALK AND ONE SIDEWALK

ONE LANEWAY AND ONE SIDEWALK AND ONE SIDEWALK AND ONE SIDEWALK

ONE LANEWAY AND ONE SIDEWALK AND ONE SIDEWALK AND ONE SIDEWALK

ONE LANEWAY AND ONE SIDEWALK AND ONE SIDEWALK AND ONE SIDEWALK

ONE LANEWAY AND ONE SIDEWALK AND ONE SIDEWALK AND ONE SIDEWALK

ONE LANEWAY AND ONE SIDEWALK AND ONE SIDEWALK AND ONE SIDEWALK

ONE LANEWAY AND ONE SIDEWALK AND ONE SIDEWALK AND ONE SIDEWALK

ONE LANEWAY AND ONE SIDEWALK AND ONE SIDEWALK AND ONE SIDEWALK

ONE LANEWAY AND ONE SIDEWALK AND ONE SIDEWALK AND ONE SIDEWALK

ONE LANEWAY AND ONE SIDEWALK AND ONE SIDEWALK AND ONE SIDEWALK

ONE LANEWAY AND ONE SIDEWALK AND ONE SIDEWALK AND ONE SIDEWALK

ONE LANEWAY AND ONE SIDEWALK AND ONE SIDEWALK AND ONE SIDEWALK

ONE LANEWAY AND ONE SIDEWALK AND ONE SIDEWALK AND ONE SIDEWALK

ONE LANEWAY AND ONE SIDEWALK AND ONE SIDEWALK AND ONE SIDEWALK

ONE LANEWAY AND ONE SIDEWALK AND ONE SIDEWALK AND ONE SIDEWALK

ONE LANEWAY AND ONE SIDEWALK AND ONE SIDEWALK AND ONE SIDEWALK

ONE LANEWAY AND ONE SIDEWALK AND ONE SIDEWALK AND ONE SIDEWALK

ONE LANEWAY AND ONE SIDEWALK AND ONE SIDEWALK AND ONE SIDEWALK

ONE LANEWAY AND ONE SIDEWALK AND ONE SIDEWALK AND ONE SIDEWALK

ONE LANEWAY AND ONE SIDEWALK AND ONE SIDEWALK AND ONE SIDEWALK

ONE LANEWAY AND ONE SIDEWALK AND ONE SIDEWALK AND ONE SIDEWALK

ONE LANEWAY AND ONE SIDEWALK AND ONE SIDEWALK AND ONE SIDEWALK

ONE LANEWAY AND ONE SIDEWALK AND ONE SIDEWALK AND ONE SIDEWALK

ONE LANEWAY AND ONE SIDEWALK AND ONE SIDEWALK AND ONE SIDEWALK

ONE LANEWAY AND ONE SIDEWALK AND ONE SIDEWALK AND ONE SIDEWALK

ONE LANEWAY AND ONE SIDEWALK AND ONE SIDEWALK AND ONE SIDEWALK

ONE LANEWAY AND ONE SIDEWALK AND ONE SIDEWALK AND ONE SIDEWALK

ONE LANEWAY AND ONE SIDEWALK AND ONE SIDEWALK AND ONE SIDEWALK

ONE LANEWAY AND ONE SIDEWALK AND ONE SIDEWALK AND ONE SIDEWALK

ONE LANEWAY AND ONE SIDEWALK AND ONE SIDEWALK AND ONE SIDEWALK

ONE LANEWAY AND ONE SIDEWALK AND ONE SIDEWALK AND ONE SIDEWALK

ONE LANEWAY AND ONE SIDEWALK AND ONE SIDEWALK AND ONE SIDEWALK

ONE LANEWAY AND ONE SIDEWALK AND ONE SIDEWALK AND ONE SIDEWALK

ONE LANEWAY AND ONE SIDEWALK AND ONE SIDEWALK AND ONE SIDEWALK

ONE LANEWAY AND ONE SIDEWALK AND ONE SIDEWALK AND ONE SIDEWALK

ONE LANEWAY AND ONE SIDEWALK AND ONE SIDEWALK AND ONE SIDEWALK

ONE LANEWAY AND ONE SIDEWALK AND ONE SIDEWALK AND ONE SIDEWALK

ONE LANEWAY AND ONE SIDEWALK AND ONE SIDEWALK AND ONE SIDEWALK

ONE LANEWAY AND ONE SIDEWALK AND ONE SIDEWALK AND ONE SIDEWALK

ONE LANEWAY AND ONE SIDEWALK AND ONE SIDEWALK AND ONE SIDEWALK

ONE LANEWAY AND ONE SIDEWALK AND ONE SIDEWALK AND ONE SIDEWALK

ONE LANEWAY AND ONE SIDEWALK AND ONE SIDEWALK AND ONE SIDEWALK

ONE LANEWAY AND ONE SIDEWALK AND ONE SIDEWALK AND ONE SIDEWALK

ONE LANEWAY AND ONE SIDEWALK AND ONE SIDEWALK AND ONE SIDEWALK

ONE LANEWAY AND ONE SIDEWALK AND ONE SIDEWALK AND ONE SIDEWALK

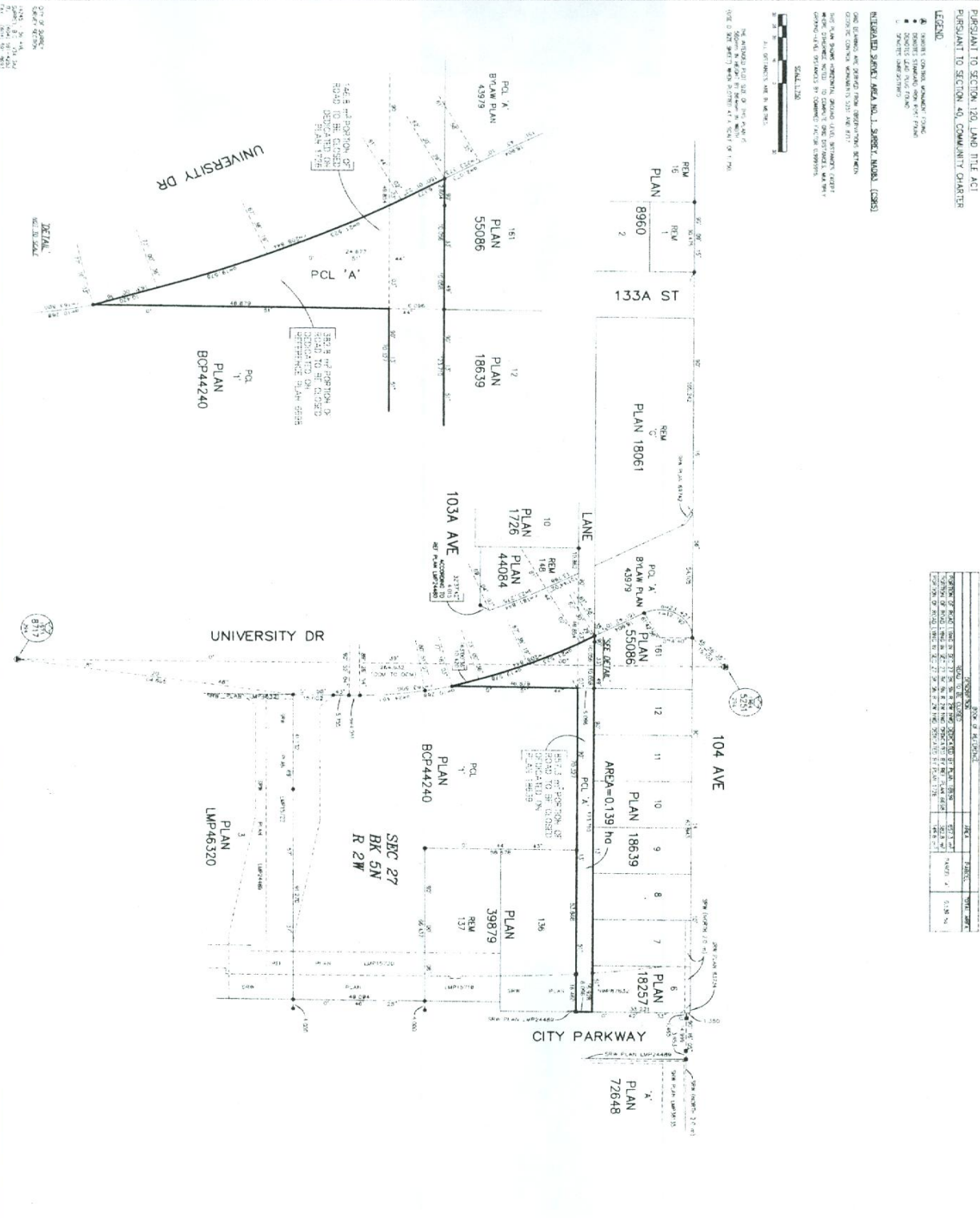
SECTION	PLAN	AREA (sq. m)	AREA (sq. ft)
1	PLAN 18061	1,200	13,000
2	PLAN 18639	1,200	13,000
3	PLAN 18257	1,200	13,000
4	PLAN 72648	1,200	13,000
5	PLAN 39879	1,200	13,000
6	PLAN 137	1,200	13,000
7	PLAN 137	1,200	13,000
8	PLAN 137	1,200	13,000
9	PLAN 137	1,200	13,000
10	PLAN 137	1,200	13,000
11	PLAN 137	1,200	13,000
12	PLAN 137	1,200	13,000
13	PLAN 137	1,200	13,000
14	PLAN 137	1,200	13,000
15	PLAN 137	1,200	13,000
16	PLAN 137	1,200	13,000
17	PLAN 137	1,200	13,000
18	PLAN 137	1,200	13,000
19	PLAN 137	1,200	13,000
20	PLAN 137	1,200	13,000
21	PLAN 137	1,200	13,000
22	PLAN 137	1,200	13,000
23	PLAN 137	1,200	13,000
24	PLAN 137	1,200	13,000
25	PLAN 137	1,200	13,000
26	PLAN 137	1,200	13,000
27	PLAN 137	1,200	13,000
28	PLAN 137	1,200	13,000
29	PLAN 137	1,200	13,000
30	PLAN 137	1,200	13,000
31	PLAN 137	1,200	13,000
32	PLAN 137	1,200	13,000
33	PLAN 137	1,200	13,000
34	PLAN 137	1,200	13,000
35	PLAN 137	1,200	13,000
36	PLAN 137	1,200	13,000
37	PLAN 137	1,200	13,000
38	PLAN 137	1,200	13,000
39	PLAN 137	1,200	13,000
40	PLAN 137	1,200	13,000
41	PLAN 137	1,200	13,000
42	PLAN 137	1,200	13,000
43	PLAN 137	1,200	13,000
44	PLAN 137	1,200	13,000
45	PLAN 137	1,200	13,000
46	PLAN 137	1,200	13,000
47	PLAN 137	1,200	13,000
48	PLAN 137	1,200	13,000
49	PLAN 137	1,200	13,000
50	PLAN 137	1,200	13,000
51	PLAN 137	1,200	13,000
52	PLAN 137	1,200	13,000
53	PLAN 137	1,200	13,000
54	PLAN 137	1,200	13,000
55	PLAN 137	1,200	13,000
56	PLAN 137	1,200	13,000
57	PLAN 137	1,200	13,000
58	PLAN 137	1,200	13,000
59	PLAN 137	1,200	13,000
60	PLAN 137	1,200	13,000
61	PLAN 137	1,200	13,000
62	PLAN 137	1,200	13,000
63	PLAN 137	1,200	13,000
64	PLAN 137	1,200	13,000
65	PLAN 137	1,200	13,000
66	PLAN 137	1,200	13,000
67	PLAN 137	1,200	13,000
68	PLAN 137	1,200	13,000
69	PLAN 137	1,200	13,000
70	PLAN 137	1,200	13,000
71	PLAN 137	1,200	13,000
72	PLAN 137	1,200	13,000
73	PLAN 137	1,200	13,000
74	PLAN 137	1,200	13,000
75	PLAN 137	1,200	13,000
76	PLAN 137	1,200	13,000
77	PLAN 137	1,200	13,000
78	PLAN 137	1,200	13,000
79	PLAN 137	1,200	13,000
80	PLAN 137	1,200	13,000
81	PLAN 137	1,200	13,000
82	PLAN 137	1,200	13,000
83	PLAN 137	1,200	13,000
84	PLAN 137	1,200	13,000
85	PLAN 137	1,200	13,000
86	PLAN 137	1,200	13,000
87	PLAN 137	1,200	13,000
88	PLAN 137	1,200	13,000
89	PLAN 137	1,200	13,000
90	PLAN 137	1,200	13,000
91	PLAN 137	1,200	13,000
92	PLAN 137	1,200	13,000
93	PLAN 137	1,200	13,000
94	PLAN 137	1,200	13,000
95	PLAN 137	1,200	13,000
96	PLAN 137	1,200	13,000
97	PLAN 137	1,200	13,000
98	PLAN 137	1,200	13,000
99	PLAN 137	1,200	13,000
100	PLAN 137	1,200	13,000

PLAN BCP

DEPOSITED IN THE LAND TITLE OFFICE
AT NEW WESTMINSTER, B.C.

REGISTRAR

2011



CITY OF SURREY
VANCOUVER REGIONAL DISTRICT

THIS PLAN LIES WITHIN THE BOUNDARIES
OF THE VANCOUVER REGIONAL DISTRICT

S.E. N. 1/4
B.C.S.