

CITY OF SURREY

BY-LAW NO. 17345

A By-law to close and to remove the dedication  
of a highway of a portion of road  
.....

WHEREAS pursuant to Subsection 40(1)(a) of the *Community Charter*, S.B.C. 2003, c. 26, the Council may, by by-law, close all or part of a highway that is vested in the municipality to all or some types of traffic;

AND WHEREAS pursuant to Section 40(2) of the *Community Charter*, S.B.C. 2003, c. 26, the Council may, by by-law, remove the dedication of a highway that has been closed by a by-law under Subsection 40(1)(a).

NOW THEREFORE the Council of the City of Surrey in open meeting assembled, ENACTS as follows:

1. That portion of road lying in Section 15, Township 8, Dedicated by Plan 1809, New Westminster District shown outlined in heavy black line on a Reference Plan attached hereto, and forming part of this by-law, duly signed by the Mayor and Clerk, prepared by Scott E. Netherton, B.C.L.S. on the 22nd day of December 2010, and more particularly described as follows:

That portion of road dedicated by Plan 1809, called Parcel 'A' and containing 0.134 hectares,

(hereinafter referred to as that portion of Road)

shall be closed to traffic.

2. The dedication as highway be removed of said portion of Road.
3. This By-law may be cited for all purposes as "Surrey Close and Remove the Dedication of Highway of a Portion of Road located at 194A Street and 68 Avenue By-law, 2011, No. 17345".

READ A FIRST, SECOND AND THIRD TIME on the 10th day of January, 2011.

NOTICE OF INTENTION

ADVERTISED on the 14th and 21st day of January 2011, in the SURREY LEADER newspaper.

RECONSIDERED AND FINALLY ADOPTED, signed by the Mayor and Clerk, and sealed with the Corporate Seal on the 24th day of January, 2011.

\_\_\_\_\_ MAYOR

\_\_\_\_\_ CLERK

7345

REFERENCE PLAN TO ACCOMPANY CITY OF SURREY HIGHWAY DEDICATION CANCELLATION BYLAW No. 1809  
 OF A PORTION OF ROAD LYING IN SEC 15 TP 8 NWD DEDICATED BY PLAN 1809  
 B.C.S.S. 92C.017

PURSUANT TO SECTION 120, LAND TITLE ACT  
 PURSUANT TO SECTION 40, COMMUNITY CHARTER

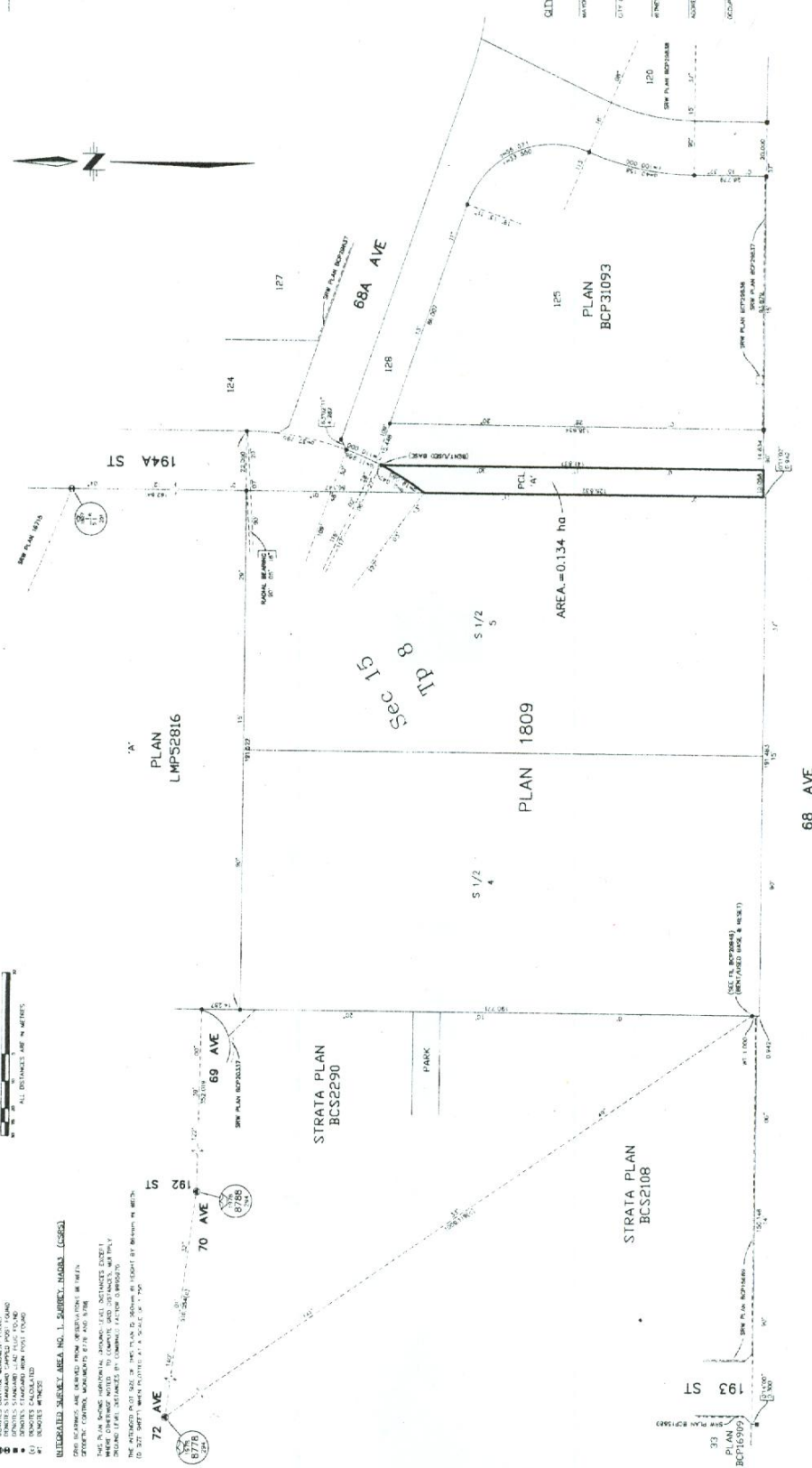
PLAN BCP

DEPOSITED IN THE LAND TITLE OFFICE  
 AT NEW WESTMINSTER, B.C. . . . . 2011

- LEGEND**
- BOUNDARY MARKERS
  - BOUNDARY MARKERS
  - BOUNDARY MARKERS
  - BOUNDARY MARKERS
  - BOUNDARY MARKERS
  - BOUNDARY MARKERS
  - BOUNDARY MARKERS
  - BOUNDARY MARKERS
  - BOUNDARY MARKERS
  - BOUNDARY MARKERS
  - BOUNDARY MARKERS
  - BOUNDARY MARKERS
  - BOUNDARY MARKERS
  - BOUNDARY MARKERS
  - BOUNDARY MARKERS
  - BOUNDARY MARKERS
  - BOUNDARY MARKERS
  - BOUNDARY MARKERS
  - BOUNDARY MARKERS
  - BOUNDARY MARKERS
  - BOUNDARY MARKERS
  - BOUNDARY MARKERS
  - BOUNDARY MARKERS
  - BOUNDARY MARKERS
  - BOUNDARY MARKERS
 1/2



**GENERAL SURVEY AREA NO. 1, ZARIEL, NADRA (LSD)**  
 THIS SURVEY WAS CONDUCTED IN ACCORDANCE WITH THE SURVEY ACT AND THE SURVEY REGULATIONS.  
 THE BOUNDARY MARKERS SHOWN ON THIS PLAN WERE PLACED BY THE SURVEYOR IN ACCORDANCE WITH THE SURVEY ACT AND THE SURVEY REGULATIONS.  
 THE DISTANCES SHOWN ON THIS PLAN WERE MEASURED BY THE SURVEYOR IN ACCORDANCE WITH THE SURVEY ACT AND THE SURVEY REGULATIONS.  
 THE AREA OF THIS PLAN IS 0.134 HA.



**CITY OF SURREY**  
 MAYOR: FRANK L. PATTS  
 CITY CLERK:  
 WITNESSES TO THE SIGNATURE OF THE CITY CLERK:  
 NAMES OF WITNESSES:  
 OCCUPATION OF WITNESSES:

THIS PLAN LIES WITHIN THE GREATER  
 LANGRANGER REGIONAL DISTRICT

REGISTERED  
 S.E. Mathews  
 B.C.L.S.  
 12000 140th Street, Surrey, BC V3V 2T9

DATE OF PLAN:  
 DATE OF DEPOSIT:  
 DATE OF CANCELLATION: