

CITY OF SURREY

BY-LAW NO. 17298

A By-law to close and to remove the dedication
of a highway of a portion of road
.....

WHEREAS pursuant to Subsection 40(1)(a) of the *Community Charter*, S.B.C. 2003, c. 26, the Council may, by by-law, close all or part of a highway that is vested in the municipality to all or some types of traffic;

AND WHEREAS pursuant to Section 40(2) of the *Community Charter*, S.B.C. 2003, c. 26, the Council may, by by-law, remove the dedication of a highway that has been closed by a by-law under Subsection 40(1)(a).

NOW THEREFORE the Council of the City of Surrey in open meeting assembled, ENACTS as follows:

1. That portion of road lying in Port Mann Plan 2546, Dedicated by Plan 2546, New Westminster District shown outlined in heavy black line on a Reference Plan attached hereto, and forming part of this by-law, duly signed by the Mayor and Clerk, prepared by Robert J. Glass, B.C.L.S. on the 14th day of September 2010, and more particularly described as follows:

That portion of road dedicated by Plan 2546, called Parcel 'A' and containing 0.120 hectares,

(hereinafter referred to as that portion of Road)

shall be closed to traffic.

2. The dedication as highway be removed of said portion of Road.
3. This By-law may be cited for all purposes as "Surrey Close and Remove the Dedication of Highway of a Portion of Road located at the north end of Bedford Drive By-law, 2010, No. 17298".

READ A FIRST, SECOND AND THIRD TIME on the 13th day of December, 2010.

NOTICE OF INTENTION

ADVERTISED on the 31st day of December 2010 and the 7th day of January 2011, in the SURREY LEADER newspaper.

RECONSIDERED AND FINALLY ADOPTED, signed by the Mayor and Clerk, and sealed with the Corporate Seal on the 10th day of January, 2011.

_____ MAYOR

_____ CLERK

REFERENCE PLAN TO ACCOMPANY CITY OF SURREY HIGHWAY DEDICATION CANCELLATION BYLAW No. 1708 OF A PORTION OF ROAD LYING IN PLAN 2546 DEDICATED BY PLAN 2546 NEW WESTMINSTER DISTRICT BCGS 97G.026

PURSUANT TO SECTION 170, LAND TITLE ACT PURSUANT TO SECTION 44, COMMUNITY CHARTER

LEGEND
• EXISTING PROPERTY LINES
• EXISTING PROPERTY LINES
• EXISTING PROPERTY LINES
• EXISTING PROPERTY LINES
• EXISTING PROPERTY LINES

SCALE: 1:500
20 15 10 5 0

INTEGRATED SURVEY AREA (I.S.A.), SURVEY, BAKSA (2003)
METRIC CONVERSIONS: 1 METRE = 3.28084 FEET
1 FOOT = 0.3048 METRES

THIS PLAN SHOWS PROPERTY LINES, DIMENSIONS, AND OTHER INFORMATION AS PROVIDED BY THE SURVEYOR. THE SURVEYOR HAS CONDUCTED A VISUAL INSPECTION OF THE PROPERTY AND HAS FOUND IT TO BE CORRECTLY IDENTIFIED AND DESCRIBED BY THE SURVEYOR.

DATE OF SURVEY: 2008-05-14
SURVEYOR: JAMES W. SMITH, B.S.C., R.S.P.



PLAN BCP
DEPOSITED IN THE LAND TITLE OFFICE
AT NEW WESTMINSTER, B.C.
ON 2010

REGISTRAR

CITY OF SURREY

MAPS, PLANS & SURVEYS

CITY CLERK, JANE WILSON

ADDRESS AS TO THE WORKING OF THE CITY CHARTER

OFFICE OF THE CITY CLERK

OFFICE OF THE CITY CLERK

OFFICE OF THE CITY CLERK

OFFICE OF THE CITY CLERK

OFFICE OF THE CITY CLERK

OFFICE OF THE CITY CLERK

OFFICE OF THE CITY CLERK

OFFICE OF THE CITY CLERK

OFFICE OF THE CITY CLERK

OFFICE OF THE CITY CLERK

OFFICE OF THE CITY CLERK

OFFICE OF THE CITY CLERK

OFFICE OF THE CITY CLERK

OFFICE OF THE CITY CLERK

OFFICE OF THE CITY CLERK

OFFICE OF THE CITY CLERK

OFFICE OF THE CITY CLERK

OFFICE OF THE CITY CLERK

OFFICE OF THE CITY CLERK

OFFICE OF THE CITY CLERK

OFFICE OF THE CITY CLERK

OFFICE OF THE CITY CLERK

OFFICE OF THE CITY CLERK

OFFICE OF THE CITY CLERK

OFFICE OF THE CITY CLERK

OFFICE OF THE CITY CLERK

OFFICE OF THE CITY CLERK

OFFICE OF THE CITY CLERK

OFFICE OF THE CITY CLERK

OFFICE OF THE CITY CLERK

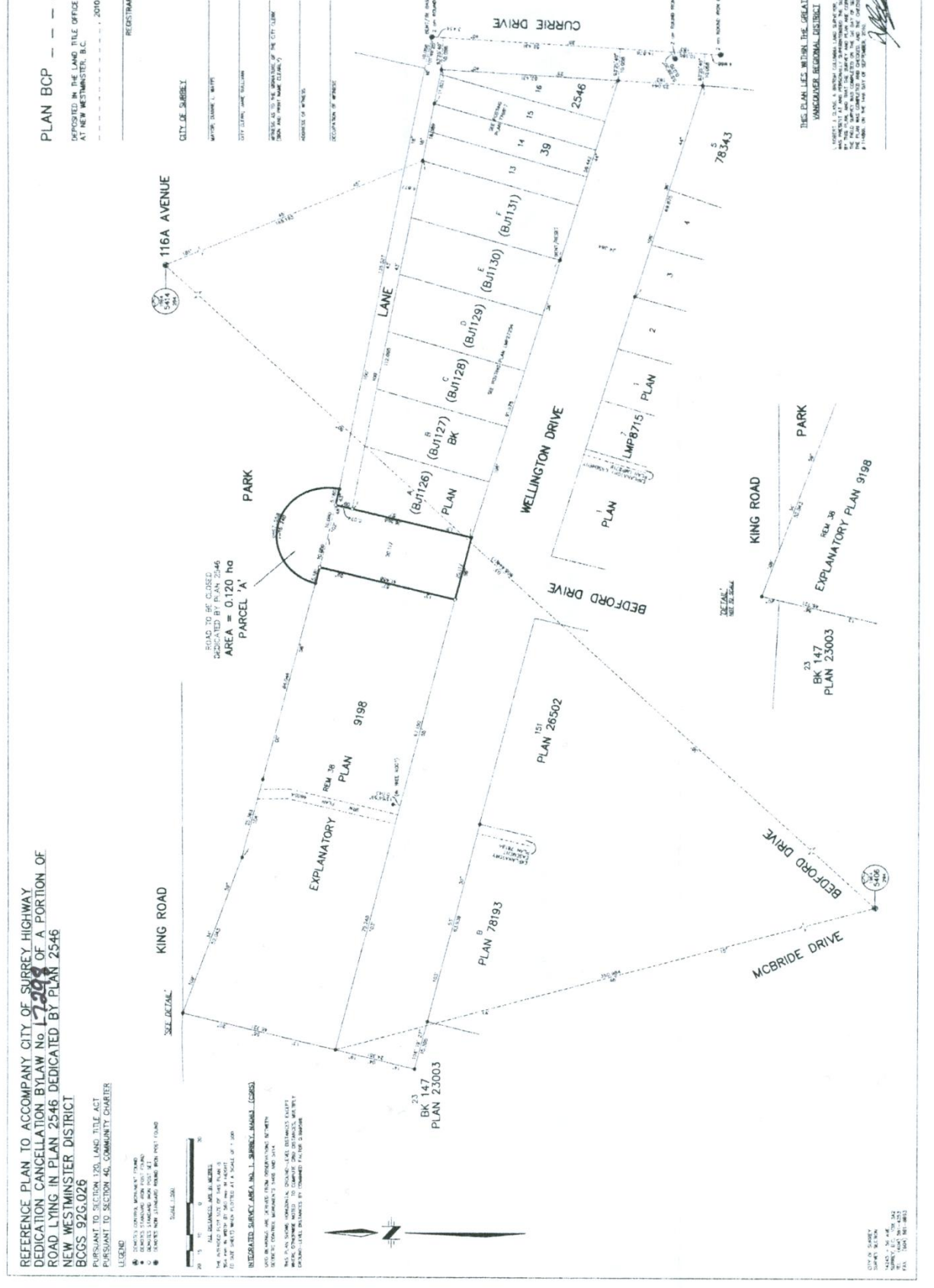
OFFICE OF THE CITY CLERK

OFFICE OF THE CITY CLERK

OFFICE OF THE CITY CLERK

OFFICE OF THE CITY CLERK

OFFICE OF THE CITY CLERK



THIS IS AN ILLUSTRATION OF THE SURVEY
PREPARED BY THE SURVEYOR
ON BEHALF OF THE CITY OF SURREY
AND IS NOT TO BE USED FOR ANY OTHER PURPOSE
WITHOUT THE WRITTEN CONSENT OF THE SURVEYOR
DATE: 2008-05-14
SURVEYOR: JAMES W. SMITH, B.S.C., R.S.P.
OFFICE OF THE CITY CLERK
OFFICE OF THE CITY CLERK
OFFICE OF THE CITY CLERK