

CITY OF SURREY

BY-LAW NO. 17268

A By-law to close and to remove the dedication
of a highway of a portion of road
.....

WHEREAS pursuant to Subsection 40(1)(a) of the *Community Charter*, S.B.C. 2003, c. 26, the Council may, by by-law, close all or part of a highway that is vested in the municipality to all or some types of traffic;

AND WHEREAS pursuant to Section 40(2) of the *Community Charter*, S.B.C. 2003, c. 26, the Council may, by by-law, remove the dedication of a highway that has been closed by a by-law under Subsection 40(1)(a).

NOW THEREFORE the Council of the City of Surrey in open meeting assembled, ENACTS as follows:

1. That portion of road lying in Section 28, Block 5 North, Range 1 West, New Westminster District shown outlined in heavy black line on a Reference Plan attached hereto, and forming part of this by-law, duly signed by the Mayor and Clerk, prepared by Matthew C. Onderwater, B.C.L.S. on the 17th day of December, 2009, and more particularly described as follows:

That portion of road dedicated by Plan 19442, called Parcel 1 and containing 278.8 square metres,

(hereinafter referred to as that portion of Road)

shall be closed to traffic.

2. The dedication as highway be removed of said portion of Road.
3. This By-law may be cited for all purposes as "Surrey Close and Remove the Dedication of Highway of a Portion of Road adjacent to 10161 through 10201 - 153 Street By-law, 2010, No. 17268".

READ A FIRST, SECOND AND THIRD TIME on the 18th day of October, 2010.

NOTICE OF INTENTION

ADVERTISED on the 22nd and 29th day of October 2010, in the PEACE ARCH AND SURREY LEADER newspapers.

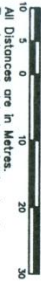
RECONSIDERED AND FINALLY ADOPTED, signed by the Mayor and Clerk, and sealed with the Corporate Seal on the 1st day of November, 2010.

_____ MAYOR

_____ CLERK

**REFERENCE PLAN TO ACCOMPANY CITY OF SURREY
HIGHWAY DEDICATION CANCELLATION BYLAW NO. 112168,
OF PART OF LANE DEDICATED BY PLAN 19442,
SECTION 28, BLOCK 5 NORTH, RANGE 1 WEST,
NEW WESTMINSTER DISTRICT.**

PURSUANT TO SECTION 180 OF THE LAND TITLE ACT
PURSUANT TO SECTION 40 OF THE COMMUNITY CHARTER
BCGS. 883.017

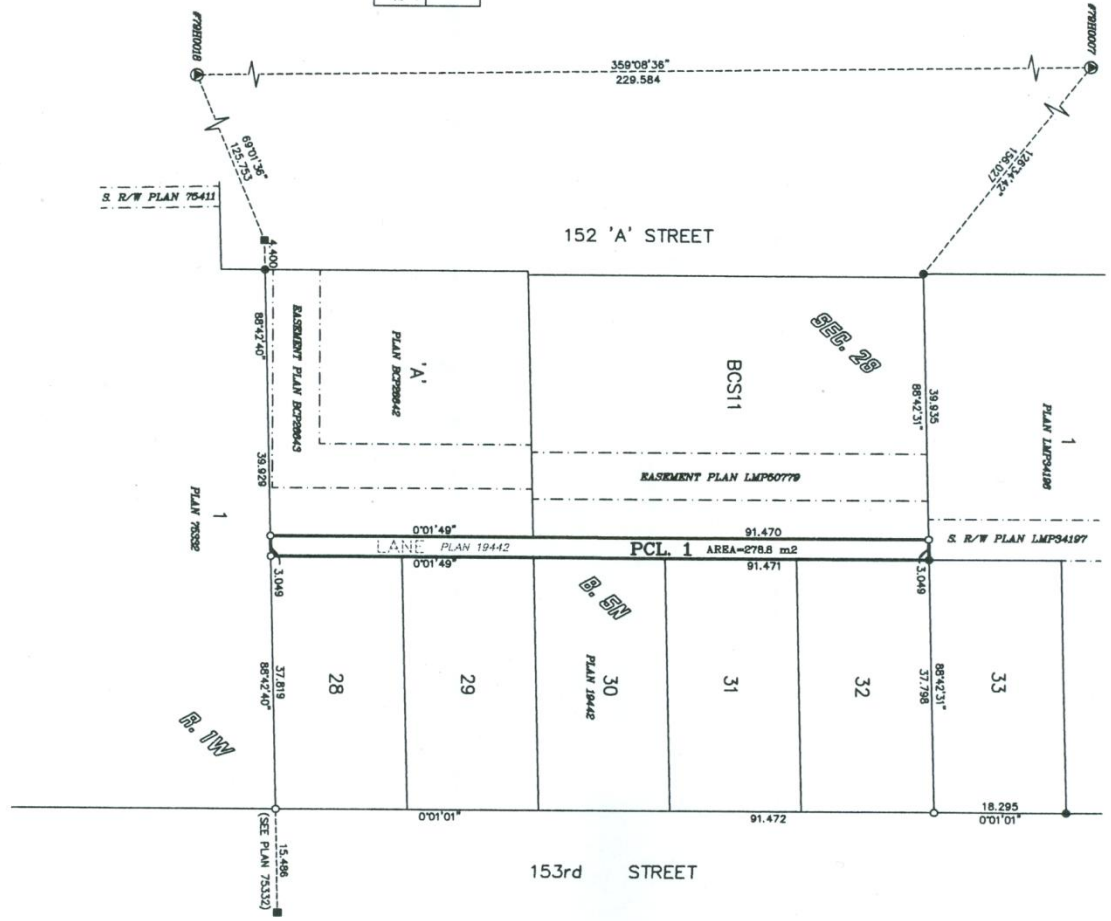


All Distances are in Metres.
The intended plot size of this plan is
300mm in width by 450mm in height.
(A size when plotted at a scale of 1:500)

- LEGEND:**
- Denotes Control Monument found.
 - Denotes Standard Iron Post found.
 - Denotes Standard Iron Post set.
 - Denotes Lead Plug found.
 - Old Bearings are derived from
OCM/7910015 & OCM/7910007



BOOK OF REFERENCE	AREA
LEGAL DESCRIPTION	
ROAD BEING CLOSED SHOWN IN HEAVY OUTLINE AND AS PARCEL 1, ROAD IN SECTION 28 BLOCK 5 NORTH, RANGE 1 WEST, DEDICATED BY PLAN 19442	278.BM2



152 'A' STREET

153rd STREET

101 'A' AVENUE

PLAN BCP

Deposited in the Land Title Office
at New Westminster B.C. on
This _____ Day of _____, 2010.

Ref. No. _____ Registrar

The City of Surrey

Mayor: Diana Watts

City Clerk

Witness as to Signatures
(sign and print name clearly)

Address of Witness

Occupation of Witness

I, Matthew C. Underwater, a British Columbia Land Surveyor,
of Cloverdale in British Columbia, certify that I was present
at and personally supervised the survey represented by
this plan, and that the survey and plan are correct. The
field survey was completed on the 17th day of December, 2008.
This plan was completed and checked, and the checklist filed
under #105005, on the 18th day of December, 2008.

This Plan Lies Within The
Greater Vancouver Regional District