

CITY OF SURREY

BY-LAW NO. 17213

A By-law to close and to remove the dedication  
of a highway of portion of road.

.....

WHEREAS pursuant to Subsection 40(1)(a) of the *Community Charter*, S.B.C. 2003, c. 26, the Council may, by by-law, close all or part of a highway that is vested in the municipality to all or some types of traffic;

AND WHEREAS pursuant to Section 40(2) of the *Community Charter*, S.B.C. 2003, c. 26, the Council may, by by-law, remove the dedication of a highway that has been closed by a by-law under Subsection 40(1)(a).

NOW THEREFORE the Council of the City of Surrey in open meeting assembled, ENACTS as follows:

1. That portion of road lying in Section 6, Township 7, New Westminster District shown outlined in heavy black line on a Reference Plan attached hereto, and forming part of this by-law, duly signed by the Mayor and Clerk, prepared by John P. Onderwater, B.C.L.S. on the 8th day of September, 2009, and more particularly described as follows:

That portion of road dedicated by Plan 373, containing 1,082.9 square metres and called Parcel "A",

(hereinafter referred to as that portion of Road)

shall be closed to traffic.

2. The dedication as highway be removed of said portion of Road.
3. This By-law may be cited for all purposes as "Surrey Close and Remove the Dedication of Highway of a Portion of Road between 3rd and 4th Avenue at 171 Street By-law, 2010, No. 17213".

READ A FIRST, SECOND AND THIRD TIME on the 12th day of July, 2010.

NOTICE OF INTENTION

ADVERTISED on the 16th day of July, 2010 in the SURREY NOW, and on the 16th and 23rd days of July, 2010, in the PEACH ARCH NEWS AND SURREY LEADER newspapers.

RECONSIDERED AND FINALLY ADOPTED, signed by the Mayor and Clerk, and sealed with the Corporate Seal on the 26th day of July, 2010.

\_\_\_\_\_ MAYOR

\_\_\_\_\_ CLERK

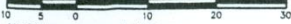
**REFERENCE PLAN TO ACCOMPANY CITY OF SURREY  
HIGHWAY DEDICATION CANCELLATION BYLAW NO. 17213  
OF PART OF ROAD DEDICATED BY PLAN 373  
SECTION 6 TOWNSHIP 7 NEW WESTMINSTER DISTRICT**

**PLAN BCP**

Deposited in the Land Title Office  
at New Westminster B.C. on  
This \_\_\_\_\_ Day of \_\_\_\_\_, 2009.

PURSUANT TO SECTION 120 OF THE LAND TITLE ACT  
PURSUANT TO SECTION 40 OF THE COMMUNITY CHARTER

**BCGS 92C.007**

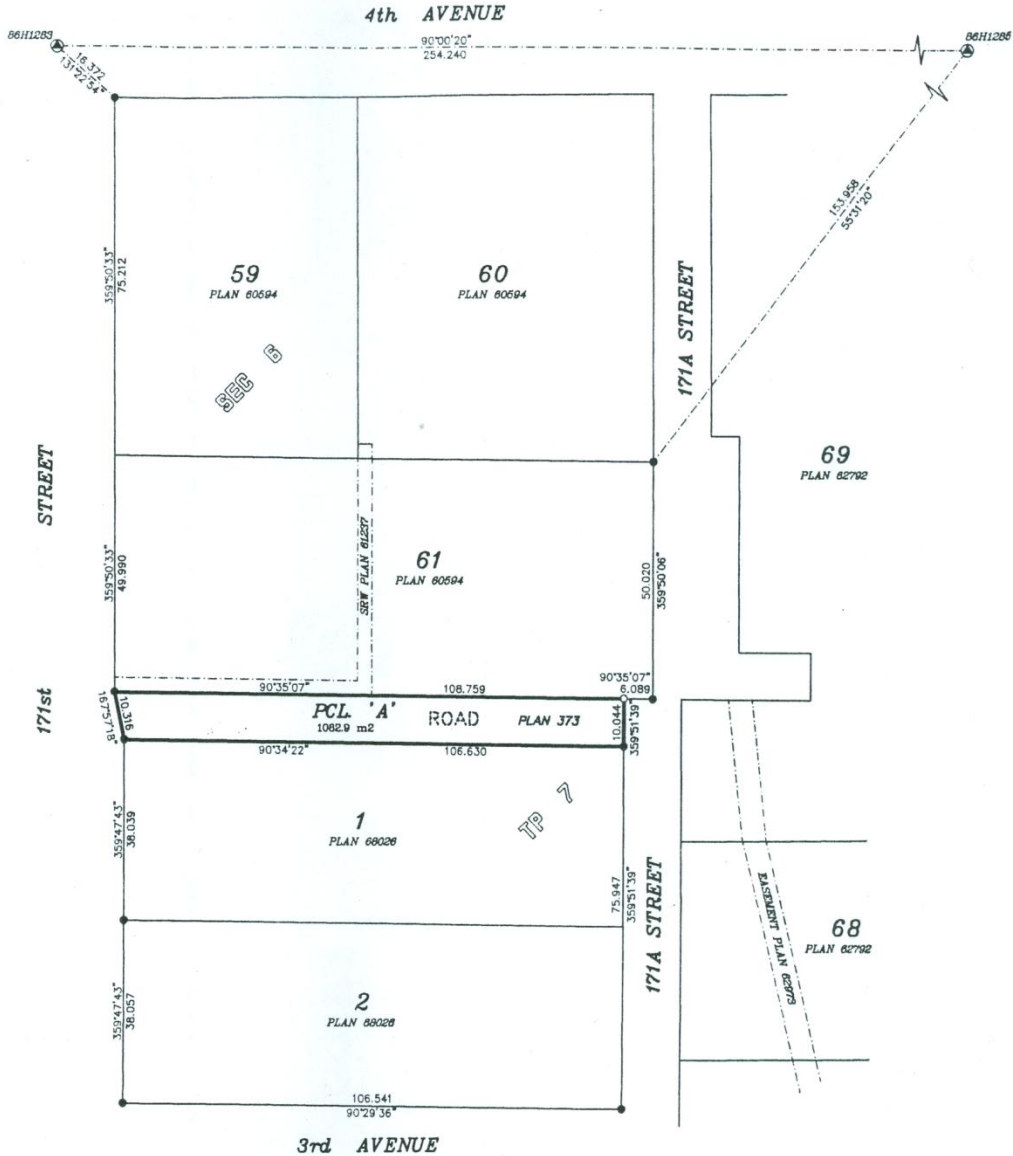


All Distances are in Metres.  
The intended plot size of this plan is  
432mm in width by 560mm in height  
(C size) when plotted at a scale of 1:750

**LEGEND:**

- ⊕ Denotes Control Monument found
- Denotes Standard Iron Post found.
- Denotes Standard Iron Post set.

Grid Bearings are derived from  
observations between Geodetic  
Control Monuments 86H1283 & 86H1285.



The City of Surrey

Mayor: Diane Watts

City Clerk

Witness as to Signatures  
(sign and print name clearly)

Address of Witness

Occupation of Witness

BOOK OF REFERENCE	AREA
LEGAL DESCRIPTION	
ROAD BEING CLOSED SHOWN IN HEAVY OUTLINE AND AS PARCEL 'A', ROAD IN SECTION 6, TOWNSHIP 7, DEDICATED BY PLAN 373.	1082.9m <sup>2</sup>

**Integrated Survey Area No. 1**

City of Surrey NAD83 (CSRS)  
This plan shows horizontal ground-level measured distances except where otherwise noted. To compute grid distances, multiply ground-level distances by combined factor 0.9996045.

Onderwater Land Surveying Ltd.  
B.C. Land Surveyors  
#104-5630 176A Street  
Cloverdale B.C.

FILE: JS0685\_RCL

*This Plan Lies Within The  
Greater Vancouver Regional District*

I, John P. Onderwater, a British Columbia Land Surveyor, of Cloverdale in British Columbia, certify that I was present at and personally supervised the survey represented by this plan, and that the survey and plan are correct. The field survey was completed on the 4th day of September, 2009. The plan was completed and checked, and the checklist filed under #100712, on the 8th day of September, 2009.

*John Onderwater*  
John Onderwater