

CITY OF SURREY

BY-LAW NO. 17212

A By-law to close and to remove the dedication
of a highway of portions of road.
.....

WHEREAS pursuant to Subsection 40(1)(a) of the *Community Charter*, S.B.C. 2003, c. 26, the Council may, by by-law, close all or part of a highway that is vested in the municipality to all or some types of traffic;

AND WHEREAS pursuant to Section 40(2) of the *Community Charter*, S.B.C. 2003, c. 26, the Council may, by by-law, remove the dedication of a highway that has been closed by a by-law under Subsection 40(1)(a).

NOW THEREFORE the Council of the City of Surrey in open meeting assembled, ENACTS as follows:

1. (a) That portion of road lying in District Lot 99, Group 2, New Westminster District shown outlined in heavy black line on a Reference Plan attached hereto, and forming part of this by-law, duly signed by the Mayor and Clerk, prepared by Montgomery C. Brisson, B.C.L.S. on the 23rd day of June, 2010, and more particularly described as follows:

That portion of road dedicated by Plan 6142, called Parcel "A" and containing 559.6 square metres;

(Portion of 186 Street)

-
- (b) Those portions of road lying in Section 4, Township 9, New Westminster District shown outlined in heavy black line on a Reference Plan attached hereto, and forming part of this by-law, duly signed by the Mayor and Clerk, prepared by Montgomery C. Brisson, B.C.L.S. on the 23rd day of June, 2010, and more particularly described as follows:

That portion of road dedicated by Plan 519, called Parcel "A" and containing 787.2 square metres;

(Portion of 189 Street)

That portion of road dedicated by Plan 519, called Parcel "B" and containing 311.9 square metres;

(Portion of 191 Street)

(Subsection 1(a) and (b) are hereinafter referred to as those portions of Road)

shall be closed to traffic.

-
2. The dedication as highway be removed of said portions of Road.

3. This By-law may be cited for all purposes as "Surrey Close and Remove the Dedication of Highway of Portions of 186 Street, 189 Street and 191 Street in the 9800 Block By-Law, 2010, No. 17212".

READ A FIRST, SECOND AND THIRD TIME on the 12th day of July, 2010.

NOTICE OF INTENTION

ADVERTISED on the 16th day of July, 2010 in the SURREY NOW, and on the 16th and 23rd day of July, 2010, in the PEACH ARCH NEWS AND SURREY LEADER newspapers.

RECONSIDERED AND FINALLY ADOPTED, signed by the Mayor and Clerk, and sealed with the Corporate Seal on the 26th day of July, 2010.

_____ MAYOR

_____ CLERK

REFERENCE PLAN TO ACCOMPANY CITY OF SURREY
 HIGHWAY DEDICATION CANCELLATION BYLAW NUMBER **17212**
 OF A PORTION OF ROAD LYING IN DISTRICT LOT 99 GROUP 2
 NEW WESTMINSTER DISTRICT DEDICATED ON REFERENCE PLAN 6142
 BCGS 92G.017

PLAN BCP _____

DEPOSITED IN THE LAND TITLE OFFICE
 AT NEW WESTMINSTER, B.C.

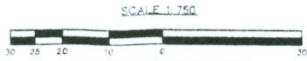
PURSUANT TO SECTION 120, LAND TITLE ACT
 PURSUANT TO SECTION 40, COMMUNITY CHARTER

_____, 2010.

LEGEND

- ▲ DENOTES CONTROL MONUMENT FOUND
- DENOTES STANDARD IRON POST FOUND
- DENOTES LEAD PLUG FOUND
- DENOTES STANDARD IRON POST SET
- NF DENOTES NO EVIDENCE FOUND
- U DENOTES UNREGISTERED

NOTE
 THIS PLAN SHOWS ONE OR MORE WITNESS POSTS WHICH ARE SET ALONG THE
 PRODUCTION OF THE PROPERTY BOUNDARY UNLESS OTHERWISE NOTED



ALL DISTANCES ARE IN METRES
 THE INTENDED PLOT SIZE OF THIS PLAN IS
 432mm IN WIDTH BY 560mm IN HEIGHT
 (USE C SIZE SHEET) WHEN PLOTTED AT A SCALE OF 1:750.

INTEGRATED SURVEY AREA NO. 1, SURREY, NAD83 (CSRS)

GRID BEARINGS ARE DERIVED FROM DUAL FREQUENCY, PHASE GPS OBSERVATIONS
 BETWEEN GEODETIC CONTROL MONUMENTS B144527 AND B144528.

THIS PLAN SHOWS HORIZONTAL GROUND-LEVEL DISTANCES EXCEPT
 WHERE OTHERWISE NOTED. TO COMPUTE GRID DISTANCES, MULTIPLY
 GROUND-LEVEL DISTANCES BY COMBINED FACTOR 0.9996075.



CITY OF SURREY

MAYOR, DIANNE L. WATTS

CITY CLERK, JANE SULLIVAN

WITNESS AS TO THE SIGNATURE OF THE CITY CLERK

ADDRESS OF WITNESS

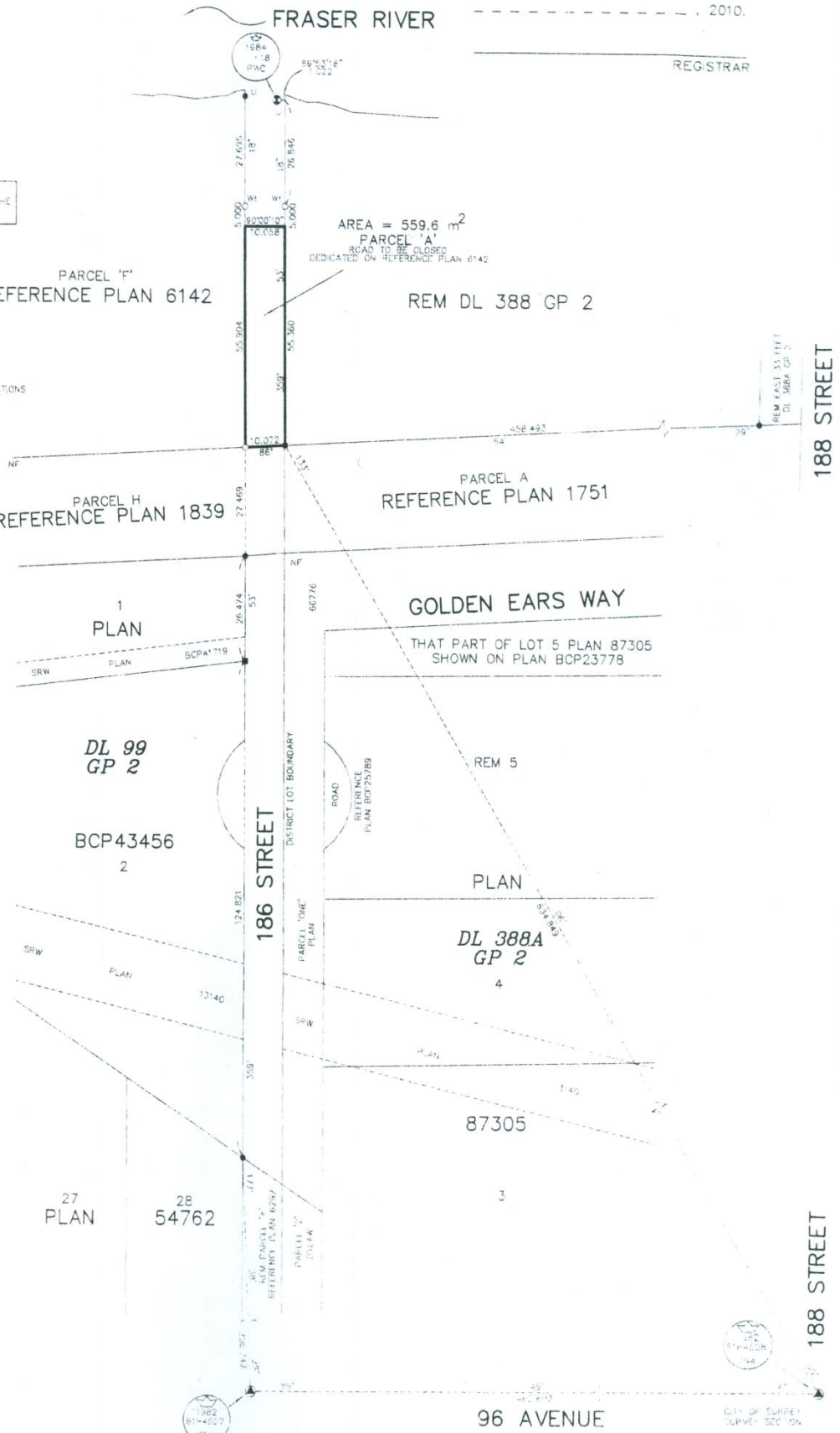
OCCUPATION OF WITNESS

THIS PLAN LIES WITHIN THE GREATER
 VANCOUVER REGIONAL DISTRICT

MONTGOMERY C. BRINSON, A BRITISH COLUMBIA LAND SURVEYOR,
 CERTIFY THAT I WAS PRESENT AT AND PERSONALLY
 SUPERINTENDED THE SURVEY REPRESENTED BY THIS PLAN, AND THAT THE
 SURVEY AND PLAN ARE CORRECT. THE FIELD SURVEY WAS COMPLETED ON
 THE 6TH DAY OF JUNE, 2010. THE PLAN WAS COMPLETED
 AND CHECKED, AND THE CHECKLIST FILLED UNDER # **111936**, ON
 THE **23RD** DAY OF JUNE, 2010.

[Signature]

B.C.L.S.



96 AVENUE

CITY OF SURREY
 SURVEY SECTION

14245 - 56 AVE
 SURREY, B.C. V3T 4K6
 TEL: (604) 591-4200
 FAX: (604) 591-4602

REFERENCE PLAN TO ACCOMPANY CITY OF SURREY HIGHWAY DEDICATION CANCELLATION BYLAW NUMBER 12212
 OF PORTIONS OF ROAD LYING IN SECTION 4 TOWNSHIP 9
 NEW WESTMINSTER DISTRICT
 BCOS 926.017

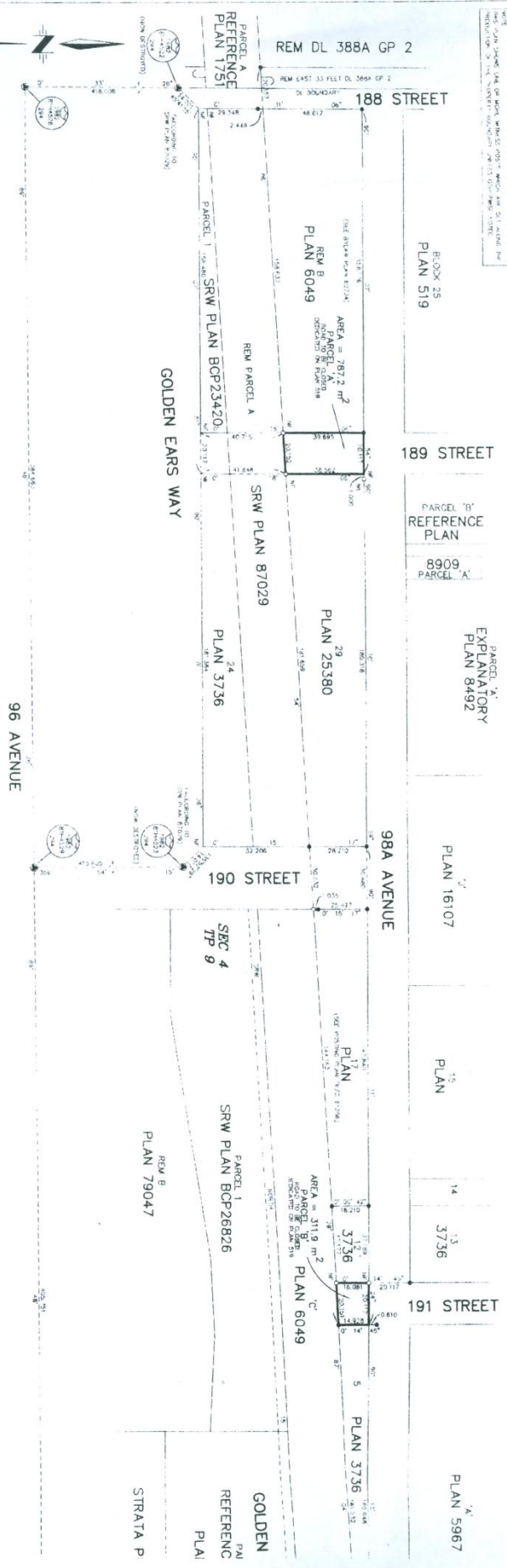
PLURIPART TO SECTION 120, LAND TITLE ACT
 PLURIPART TO SECTION 40, COMMUNITY CHARTER

NO.	DESCRIPTION	BOOK OR INSTRUMENT	DATE	PLAN
1	PLAN 16107			
2	PLAN 16107			
3	PLAN 16107			
4	PLAN 16107			
5	PLAN 16107			
6	PLAN 16107			
7	PLAN 16107			
8	PLAN 16107			
9	PLAN 16107			
10	PLAN 16107			
11	PLAN 16107			
12	PLAN 16107			
13	PLAN 16107			
14	PLAN 16107			
15	PLAN 16107			
16	PLAN 16107			
17	PLAN 16107			
18	PLAN 16107			
19	PLAN 16107			
20	PLAN 16107			
21	PLAN 16107			
22	PLAN 16107			
23	PLAN 16107			
24	PLAN 16107			
25	PLAN 16107			
26	PLAN 16107			
27	PLAN 16107			
28	PLAN 16107			
29	PLAN 16107			
30	PLAN 16107			
31	PLAN 16107			
32	PLAN 16107			
33	PLAN 16107			
34	PLAN 16107			
35	PLAN 16107			
36	PLAN 16107			
37	PLAN 16107			
38	PLAN 16107			
39	PLAN 16107			
40	PLAN 16107			
41	PLAN 16107			
42	PLAN 16107			
43	PLAN 16107			
44	PLAN 16107			
45	PLAN 16107			
46	PLAN 16107			
47	PLAN 16107			
48	PLAN 16107			
49	PLAN 16107			
50	PLAN 16107			
51	PLAN 16107			
52	PLAN 16107			
53	PLAN 16107			
54	PLAN 16107			
55	PLAN 16107			
56	PLAN 16107			
57	PLAN 16107			
58	PLAN 16107			
59	PLAN 16107			
60	PLAN 16107			
61	PLAN 16107			
62	PLAN 16107			
63	PLAN 16107			
64	PLAN 16107			
65	PLAN 16107			
66	PLAN 16107			
67	PLAN 16107			
68	PLAN 16107			
69	PLAN 16107			
70	PLAN 16107			
71	PLAN 16107			
72	PLAN 16107			
73	PLAN 16107			
74	PLAN 16107			
75	PLAN 16107			
76	PLAN 16107			
77	PLAN 16107			
78	PLAN 16107			
79	PLAN 16107			
80	PLAN 16107			
81	PLAN 16107			
82	PLAN 16107			
83	PLAN 16107			
84	PLAN 16107			
85	PLAN 16107			
86	PLAN 16107			
87	PLAN 16107			
88	PLAN 16107			
89	PLAN 16107			
90	PLAN 16107			
91	PLAN 16107			
92	PLAN 16107			
93	PLAN 16107			
94	PLAN 16107			
95	PLAN 16107			
96	PLAN 16107			
97	PLAN 16107			
98	PLAN 16107			
99	PLAN 16107			
100	PLAN 16107			

LEGEND
 1. EXISTING ROADWAY RIGHTS
 2. EXISTING STANDARD ROAD RIGHTS
 3. EXISTING STANDARD ROAD RIGHTS
 4. EXISTING STANDARD ROAD RIGHTS
 5. EXISTING STANDARD ROAD RIGHTS



REGISTERED SURVEY AREA NO. 1, SURREY, MANITOBA, CANADA
 THE SURVEYOR GENERAL OF MANITOBA HAS REVIEWED THIS PLAN AND IS SATISFIED THAT IT ACCURATELY REPRESENTS THE SURVEY AND THE INFORMATION CONTAINED THEREIN.
 THE SURVEYOR GENERAL'S OFFICE IS LOCATED AT 100, RIVERVIEW AVENUE, WINDYBUSH, MANITOBA, CANADA.
 THE SURVEYOR GENERAL'S OFFICE IS LICENSED UNDER THE SURVEY ACT, MANITOBA, CANADA.
 THE SURVEYOR GENERAL'S OFFICE IS LICENSED UNDER THE SURVEY ACT, MANITOBA, CANADA.
 THE SURVEYOR GENERAL'S OFFICE IS LICENSED UNDER THE SURVEY ACT, MANITOBA, CANADA.



CITY OF SURREY

THIS PLAN
 YANCOLO

REGISTERED SURVEYOR
 100, RIVERVIEW AVENUE
 WINDYBUSH, MANITOBA, CANADA
 SURREY, MANITOBA, CANADA
 100, RIVERVIEW AVENUE
 WINDYBUSH, MANITOBA, CANADA
 SURREY, MANITOBA, CANADA
 100, RIVERVIEW AVENUE
 WINDYBUSH, MANITOBA, CANADA
 SURREY, MANITOBA, CANADA