

CITY OF SURREY

BY-LAW NO. 17210

A By-law to close and to remove the dedication
of a highway of a portion of road.
.....

WHEREAS pursuant to Subsection 40(1)(a) of the *Community Charter*, S.B.C. 2003, c. 26,
the Council may, by by-law, close all or part of a highway that is vested in the municipality to all
or some types of traffic;

AND WHEREAS pursuant to Section 40(2) of the *Community Charter*, S.B.C. 2003, c. 26, the
Council may, by by-law, remove the dedication of a highway that has been closed by a by-law
under Subsection 40(1)(a).

NOW THEREFORE the Council of the City of Surrey in open meeting assembled, ENACTS as
follows:

1. That portion of road lying in Section 12 Township 1 New Westminster District, shown
outlined in heavy black line on a Reference Plan attached hereto, and forming part of this
by-law, duly signed by the Mayor and Clerk, prepared by Matthew Onderwater, B.C.L.S.
on the 17th day of June, 2010 and more particularly described as follows:

That portion of road dedicated by Plan 18653, called Parcel A and containing 77.5
square metres

(hereinafter referred to as that portion of lane)

shall be closed to traffic.

2. The dedication as highway be removed of said portion of lane.
3. This By-law may be cited for all purposes as "Surrey Close and Remove the Dedication of
Highway of a Portion of Lane at 164 Street and 11A Avenue By-law, 2010, No. 17210".

READ A FIRST, SECOND AND THIRD TIME on the 12th day of July, 2010.

NOTICE OF INTENTION

ADVERTISED on the 16th day of July, 2010 in the SURREY NOW, and on the 16th and 23rd days of
July, 2010, in the PEACH ARCH NEWS AND SURREY LEADER newspapers.

RECONSIDERED AND FINALLY ADOPTED, signed by the Mayor and Clerk, and sealed with the
Corporate Seal on the 26th day of July, 2010.

_____ MAYOR

_____ CLERK

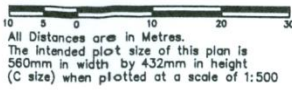
**REFERENCE PLAN TO ACCOMPANY CITY OF SURREY
HIGHWAY DEDICATION CANCELLATION BYLAW NO. 17210
OF PART OF LANE DEDICATED BY PLAN 18653,
SECTION 12, TOWNSHIP 1, N.W.D.**

PLAN BCP

Deposited in the Land Title Office
at New Westminster B.C. on
This _____ Day of _____, 2010.

PURSUANT TO SECTION 120 OF THE LAND TITLE ACT
PURSUANT TO SECTION 40 OF THE COMMUNITY CHARTER

B.C.G.S. 92G.007



- LEGEND:**
- ⊙ Denotes Control Monument found.
 - Denotes Standard Iron Post found.
 - Denotes Standard Iron Post set.
 - ⊙ Denotes Non-Standard Post found.

Grid Bearings are derived from
OCM80H2010 & OCM5759.

Note:
This plan shows one or more witness posts
which are set along the production of the
property boundary unless otherwise noted.

BOOK OF REFERENCE	AREA
LEGAL DESCRIPTION	#
ROAD BEING CLOSED SHOWN IN HEAVY OUTLINE AND AS PARCEL 'A', ROAD IN SECTION 12 TOWNSHIP 1, DEDICATED BY PLAN 18653.	77.5m ²

The City of Surrey

Mayor: Diane Watts

City Clerk

Witness as to Signatures
(sign and print name clearly)

Address of Witness

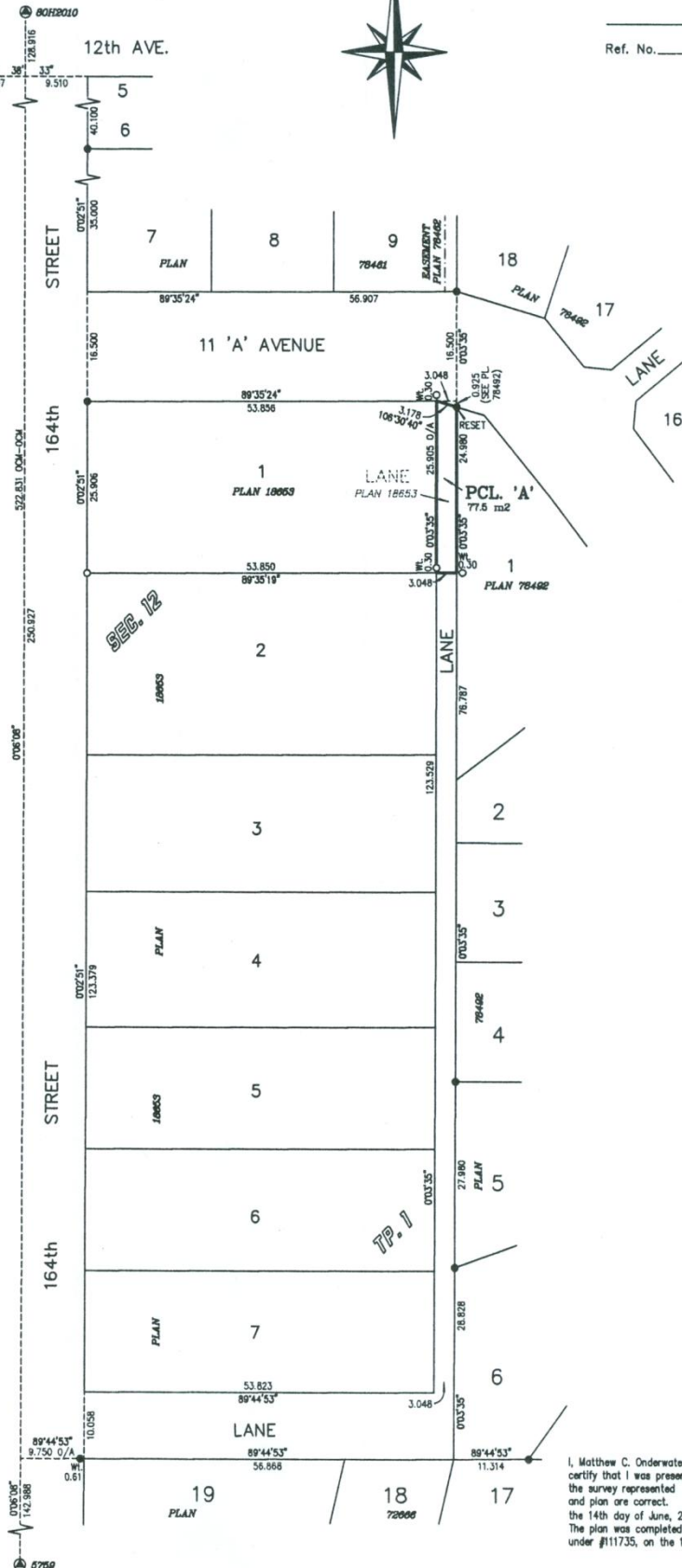
Occupation of Witness

**Integrated Survey Area No. 1
City of Surrey NAD83 (CSRS)**

This plan shows horizontal ground level
distances, except where otherwise noted.
To compute grid distances, multiply ground
level distances by combined factor of 0.9996003.

Underwater Land Surveying Ltd.
B.C. Land Surveyors
#104 - 5850 176 'A' Street
Cleveland, B.C.

FILE: JS1002_RCL



I, Matthew C. Underwater, a British Columbia Land Surveyor,
certify that I was present at and personally superintended
the survey represented by this plan, and that the survey
and plan are correct. The field survey was completed on
the 14th day of June, 2010.
The plan was completed and checked, and the checklist filed
under #111735, on the 17th day of June, 2010.

*This Plan Lies Within The
Greater Vancouver Regional District*

B.C.L.S.