

CITY OF SURREY

BY-LAW NO. 17209

A By-law to close and to remove the dedication
of a highway of portions of Road.

.....

WHEREAS pursuant to Subsection 40(1)(a) of the *Community Charter*, S.B.C. 2003, c. 26, the Council may, by by-law, close all or part of a highway that is vested in the municipality to all or some types of traffic;

AND WHEREAS pursuant to Section 40(2) of the *Community Charter*, S.B.C. 2003, c. 26, the Council may, by by-law, remove the dedication of a highway that has been closed by a by-law under Subsection 40(1)(a).

NOW THEREFORE the Council of the City of Surrey in open meeting assembled, ENACTS as follows:

1. Those portions of road lying in Section 6, Township 7, New Westminster District, shown outlined in heavy black line on a Reference Plan attached hereto, and forming part of this by-law, duly signed by the Mayor and Clerk, prepared by John Onderwater, B.C.L.S. on the 23rd day of December, 2009, and more particularly described as follows:

That portion of road dedicated by Plan 373, containing 872.1 square metres and called Parcel A; and

That portion of road dedicated by Plan 373 containing 1,893.3 square metres and called Parcel B.

(hereinafter referred to as those portions of Lane)

shall be closed to traffic.

2. The dedication as highway be removed of said portions of Lane.
3. This By-law may be cited for all purposes as "Surrey Close and Remove the Dedication of Highway of Portions of Lane in the 300 Block between 171 and 172 Street By-law, 2010, No. 17209".

READ A FIRST, SECOND AND THIRD TIME on the 12th day of July, 2010.

NOTICE OF INTENTION

ADVERTISED on the 16th day of July, 2010 in the SURREY NOW, and on the 16th and 23rd days of July, 2010, in the PEACH ARCH NEWS AND SURREY LEADER newspapers.

RECONSIDERED AND FINALLY ADOPTED, signed by the Mayor and Clerk, and sealed with the Corporate Seal on the 26th day of July, 2010.

_____ MAYOR

_____ CLERK

**REFERENCE PLAN TO ACCOMPANY CITY OF SURREY
HIGHWAY DEDICATION CANCELLATION BYLAW NO. 17209
OF PARTS OF ROAD DEDICATED BY PLAN 373
SECTION 6 TOWNSHIP 7 NEW WESTMINSTER DISTRICT**

PLAN BCP

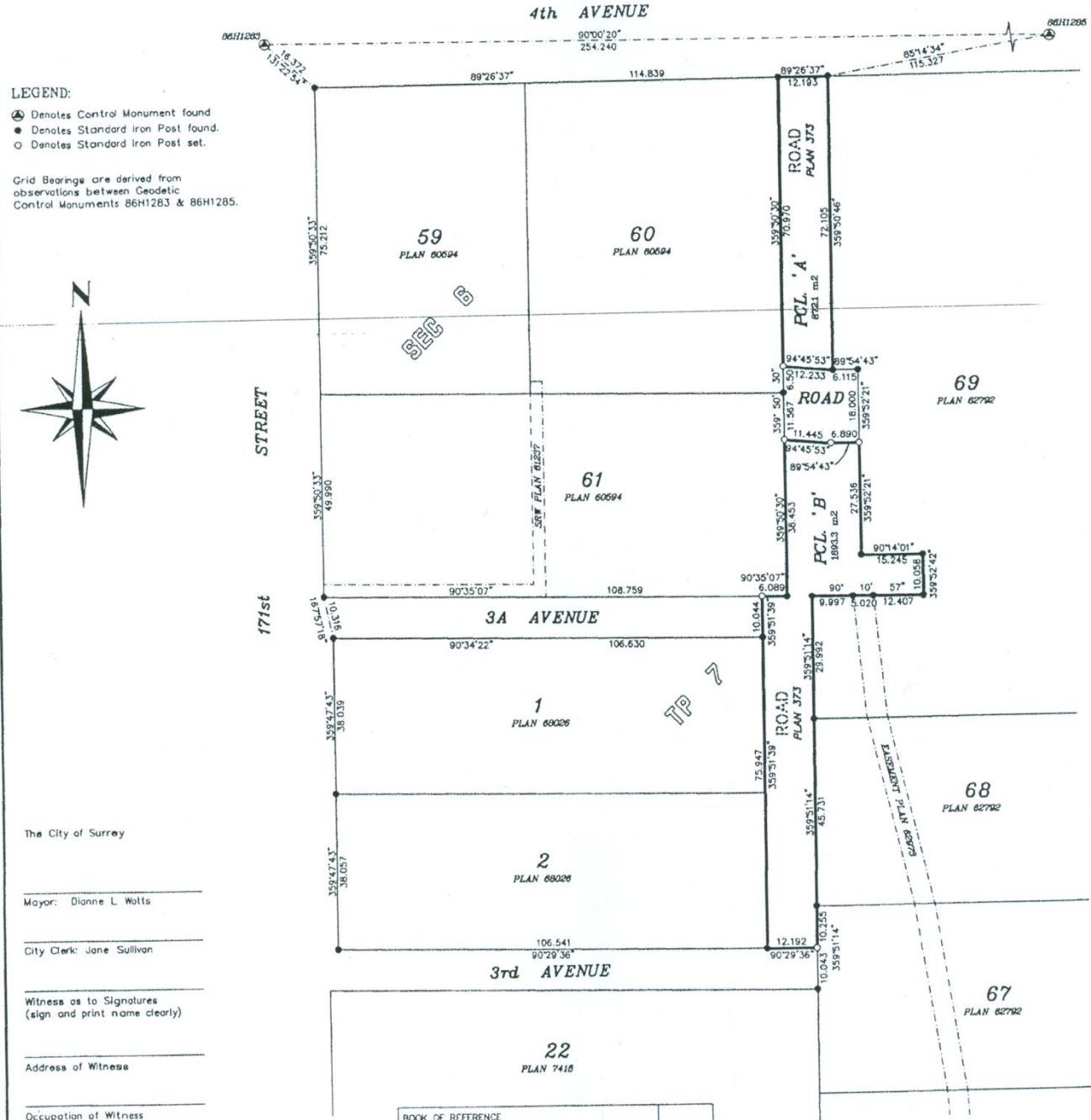
Deposited in the Land Title Office
at New Westminster B.C. on
This _____ Day of _____, 2010.

Ref. No. _____ Registrar

PURSUANT TO SECTION 120 OF THE LAND TITLE ACT
PURSUANT TO SECTION 40 OF THE COMMUNITY CHARTER

BCCS 92G.007

All Distances are in Metres.
The intended plot size of this plan is
432mm in width by 560mm in height
(C size) when plotted at a scale of 1:750



LEGEND:
 ⊕ Denotes Control Monument found
 ● Denotes Standard Iron Post found.
 ○ Denotes Standard Iron Post set.
 Grid Bearings are derived from observations between Geodetic Control Monuments 86H1283 & 86H1285.



The City of Surrey
 Mayor: Dianne L. Watts
 City Clerk: Jane Sullivan
 Witness as to Signatures (sign and print name clearly)
 Address of Witness
 Occupation of Witness

BOOK OF REFERENCE	AREA
ROAD BEING CLOSED SHOWN IN HEAVY OUTLINE AND AS PARCEL 'A', ROAD IN SECTION 6, TOWNSHIP 7, DEDICATED BY PLAN 373.	872.1m2
ROAD BEING CLOSED SHOWN IN HEAVY OUTLINE AND AS PARCEL 'B', ROAD IN SECTION 6, TOWNSHIP 7, DEDICATED BY PLAN 373.	1893.3m2

Integrated Survey Area No. 1
 City of Surrey, NAD83 (CSRS)
 This plan shows horizontal ground-level measured distances except where otherwise noted. To compute grid distances, multiply ground-level distances by combined factor 0.9996045.

Onderwater Land Surveying Ltd.
 B.C. Land Surveyors
 #104-5830 178A Street
 Cloverdale B.C.
 FILE: JS0978_RCL CITY FILE: (52830A)

*This Plan Lies Within The
 Greater Vancouver Regional District*

I, John P. Onderwater, a British Columbia Land Surveyor, of Cloverdale in British Columbia, certify that I was present at and personally supervised the survey represented by this plan, and that the survey and plan are correct. The field survey was completed on the 23rd day of December, 2009. The plan was completed and checked, and the checklist filed under #105228, on the 23rd day of December, 2009.

John Onderwater
 John Onderwater