

CITY OF SURREY

BY-LAW NO. 17172

A By-law to close and to remove the dedication
of a highway of portions of road.
.....

WHEREAS pursuant to Subsection 40(1)(a) of the *Community Charter*, S.B.C. 2003, c. 26, the Council may, by by-law, close all or part of a highway that is vested in the municipality to all or some types of traffic;

AND WHEREAS pursuant to Section 40(2) of the *Community Charter*, S.B.C. 2003, c. 26, the Council may, by by-law, remove the dedication of a highway that has been closed by a by-law under Subsection 40(1)(a).

NOW THEREFORE the Council of the City of Surrey in open meeting assembled, ENACTS as follows:

1. Those portions of road lying in Section 31 Township 8 and Section 6 Township 9 New Westminster District, shown outlined in heavy black line on a Reference Plan attached hereto, and forming part of this by-law, duly signed by the Mayor and Clerk, prepared by Montgomery C. Brisson, B.C.L.S. on the 28th day of April, 2010, and more particularly described as follows:

(a) Those portions of road lying in Section 6 Township 9 shown as Parcel A, containing a 3.84 hectares and described as follows:

That portion of road dedicated by Plan 3288 and containing 0.390 hectares;

That portion of road dedicated by Plan 4300 and containing 0.750 hectares;

That portion of road dedicated by Plan 5980 and containing 0.660 hectares;

That portion of road dedicated by Plan 6072 and containing 0.156 hectares;

That portion of road dedicated by Plan 6072 and containing 0.682 hectares;

That portion of road dedicated by Plan 9888 and containing 991.7 square metres;

That portion of road dedicated by Highway Plan 28296 and containing 278.2 square metres;

That portion of road dedicated by Highway Plan 28296 and containing 0.247 hectares;

That portion of road dedicated by Highway Plan 28296 and containing 0.721 hectares;

That portion of road dedicated by Plan 32744 and containing 0.101 hectares;

- (b) Those portions of road lying in Section 31 Township 8 and Section 6 Township 9, shown as Parcel B and containing 0.235 hectares and described as follows:

That portion of road dedicated by Plan 24769 and containing 0.124 hectares;

That portion of road dedicated by Plan 6870 and containing 726.6 square metres;

That portion of road dedicated by Highway Plan 50683 and containing 92.0 square metres;

That portion of road dedicated by Reference Plan BCP27681 and containing 290.1 square metres.

(Sections 1(a) and (b) hereinafter referred to as those portions of road)

shall be closed to traffic.

2. The dedication as highway be removed of said portions of road.
3. This By-law may be cited for all purposes as "Surrey Close and Remove the Dedication of Highway of Portions of 100 Avenue, Tynehead Drive, 172 Street and a Portion of Road at 96 Avenue west of 176 Street By-law, 2010, No. 17172".

READ A FIRST, SECOND AND THIRD TIME on the 3rd day of May, 2010.

NOTICE OF INTENTION

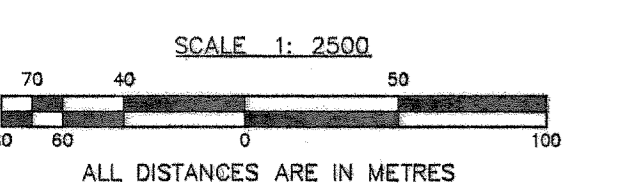
ADVERTISED on the 7th and 14th day of May, 2010, in the SURREY NOW newspaper.

RECONSIDERED AND FINALLY ADOPTED, signed by the Mayor and Clerk, and sealed with the Corporate Seal on the 17th day of May, 2010.

_____ MAYOR

_____ CLERK

- LEGEND**
- ⊙ DENOTES CONTROL MONUMENT FOUND
 - ⊙ DENOTES STANDARD IRON POST FOUND
 - ⊙ DENOTES NON-STANDARD IRON POST FOUND
 - ⊙ DENOTES ALUMINUM POST FOUND
 - ⊙ DENOTES LEAD PLUG FOUND
 - ⊙ DENOTES STANDARD IRON POST SET
 - MON DENOTES MONUMENT



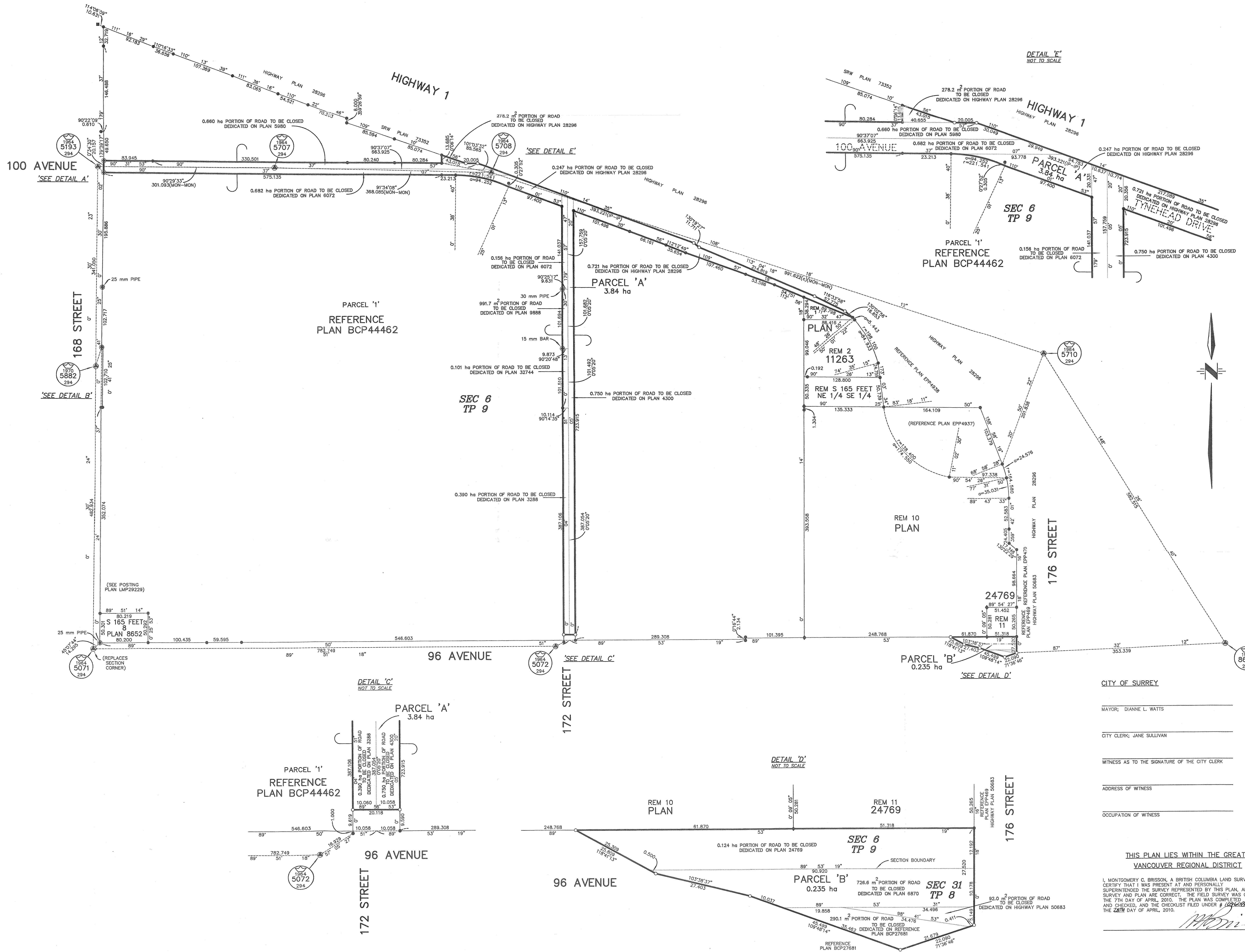
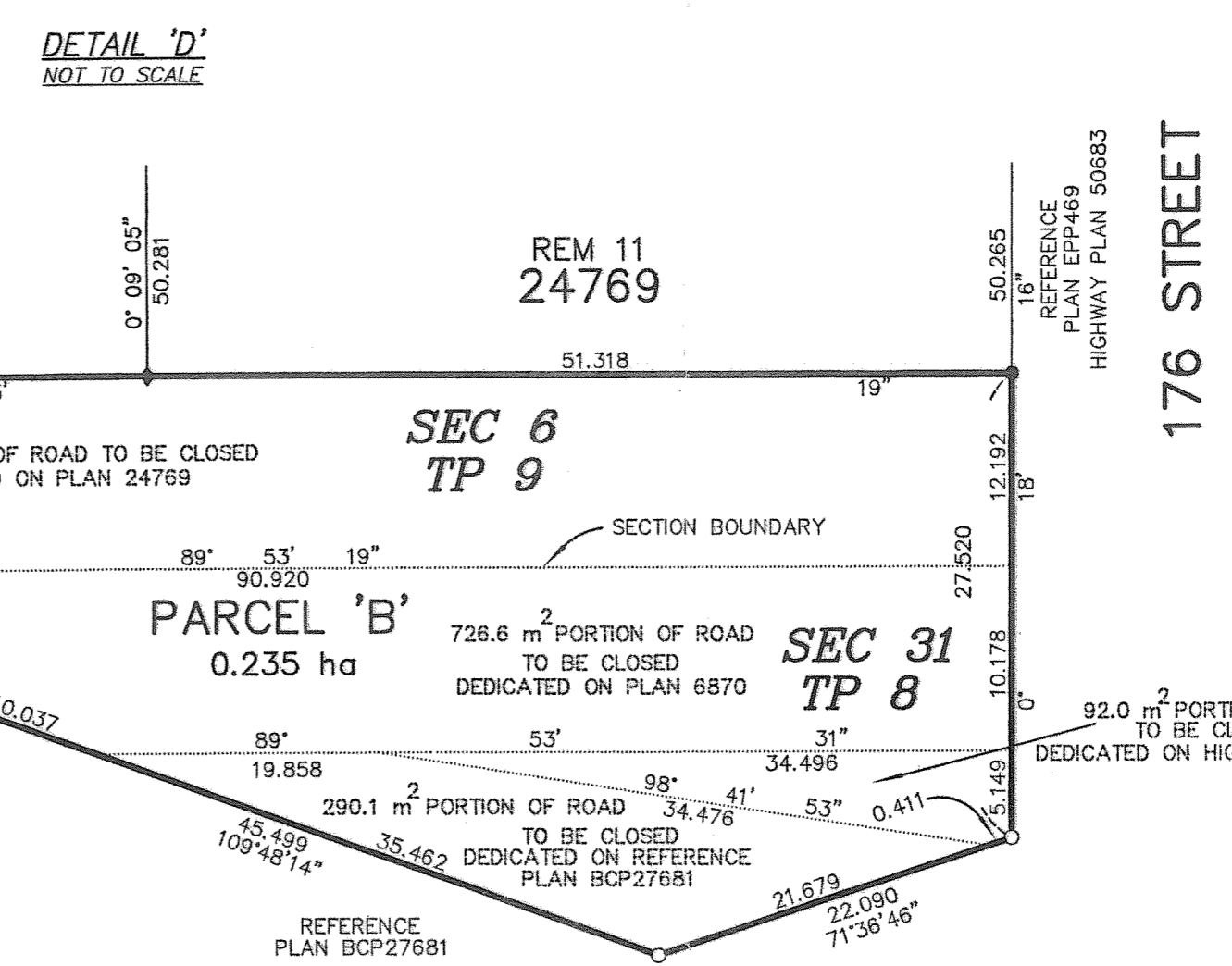
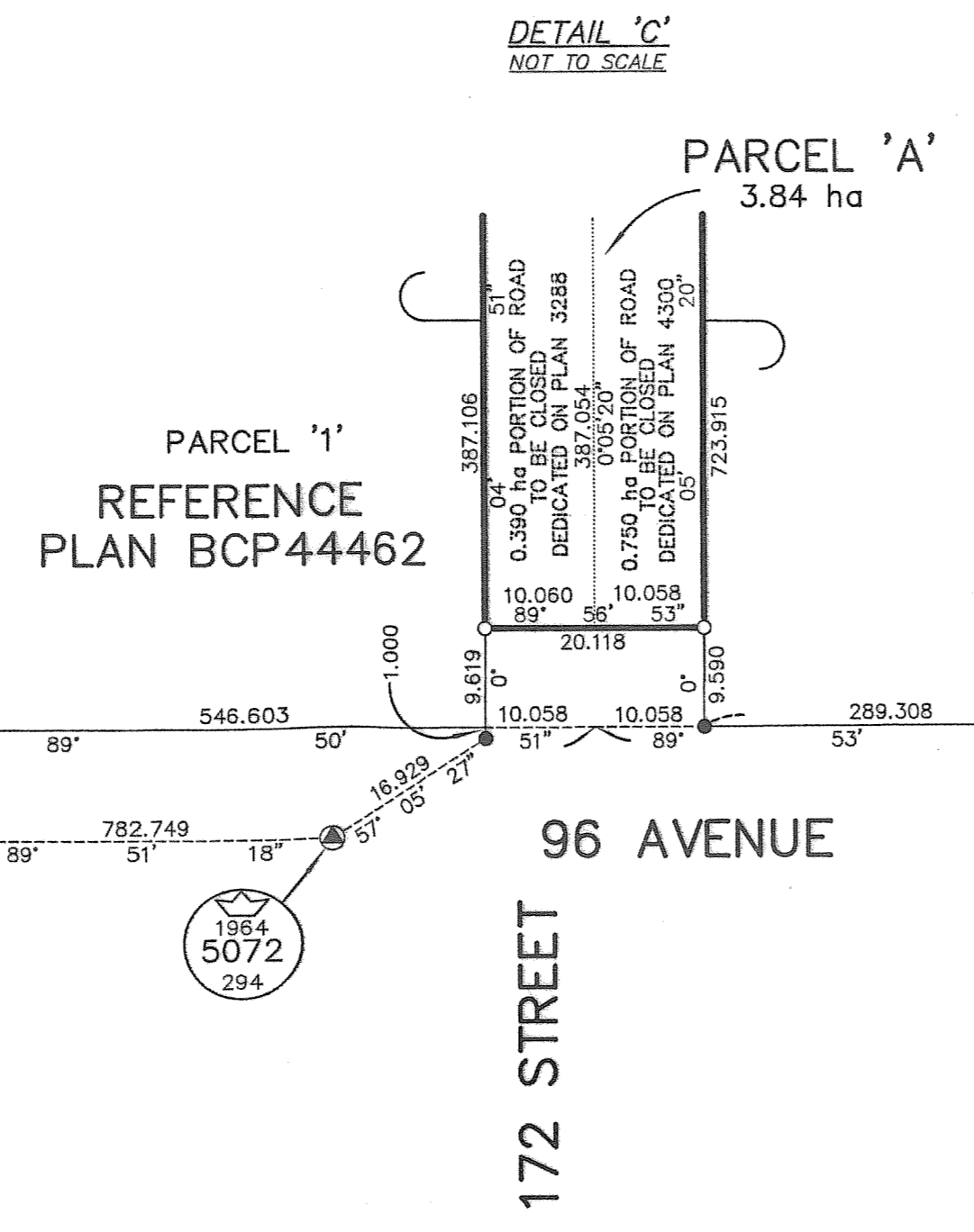
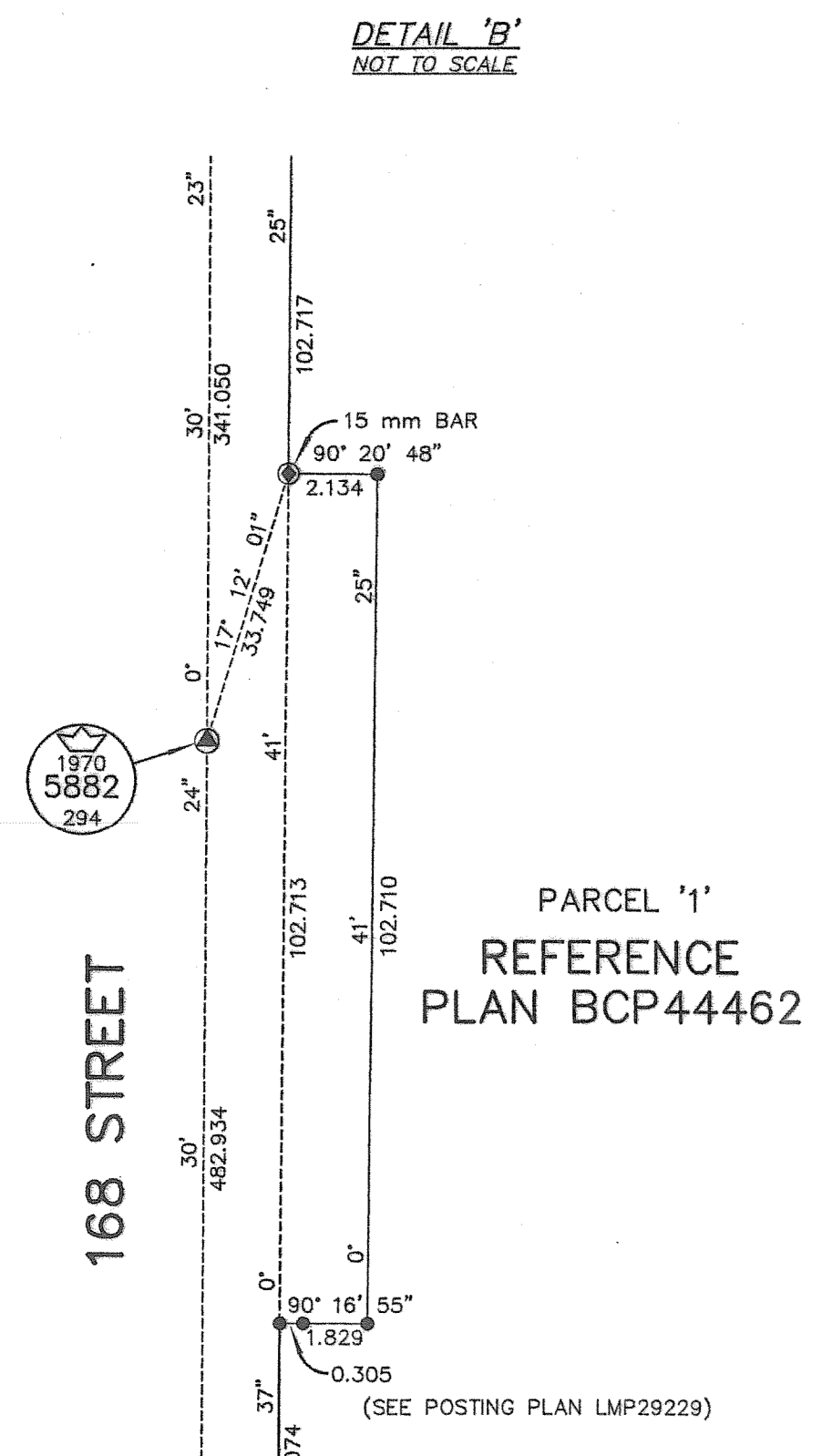
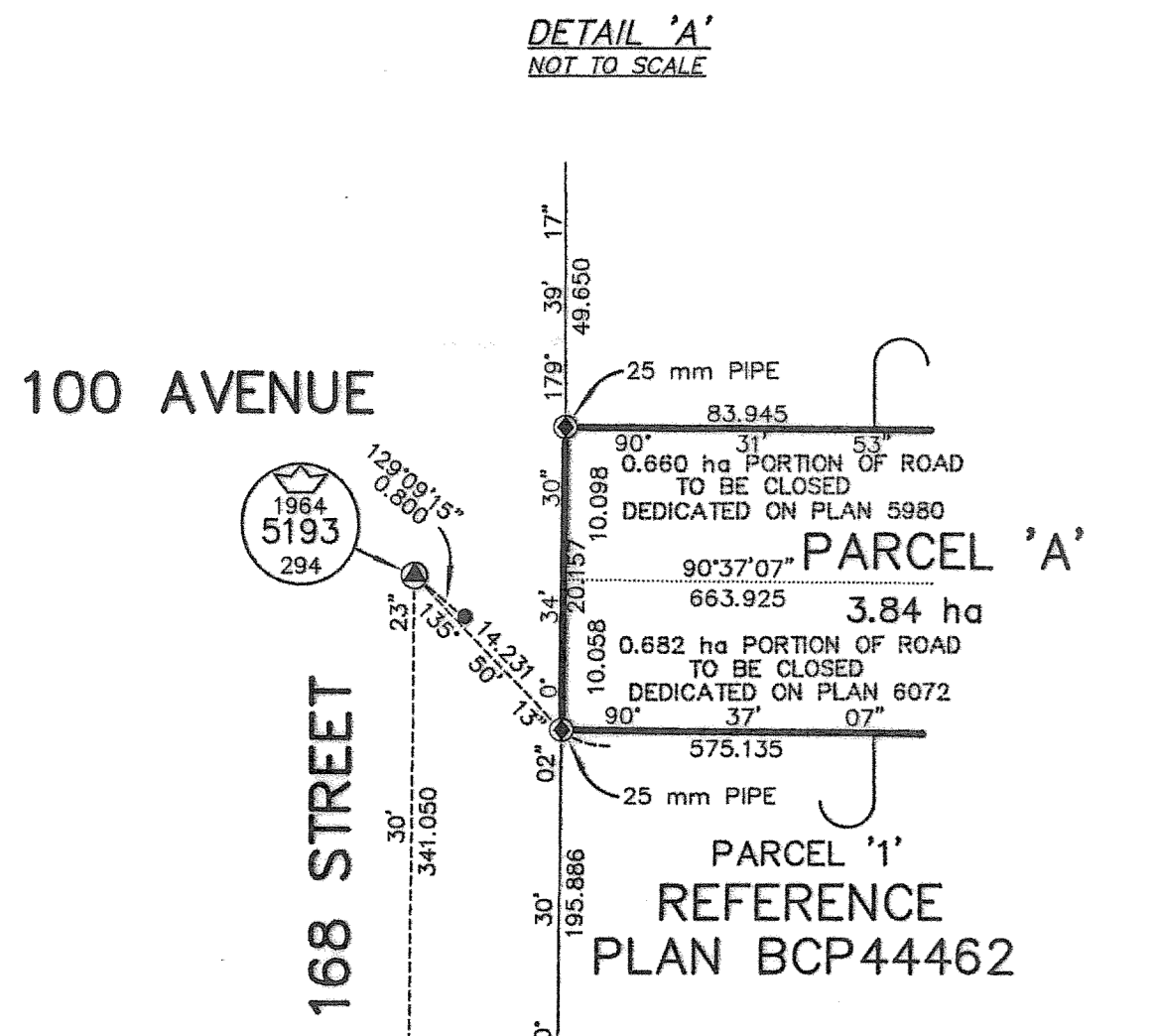
THE INTENDED PLOT SIZE OF THIS PLAN IS 1120mm IN WIDTH BY 840mm IN HEIGHT (USE E SIZE SHEET) WHEN PLOTTED AT A SCALE OF 1:2500.

INTEGRATED SURVEY AREA NO. 1, SURREY, NAD83 (CSRS)

GRID BEARINGS ARE DERIVED FROM OBSERVATIONS BETWEEN GEODETIC CONTROL MONUMENTS 5071, 5072, 5193, 5707, 5708, 5710, 5814 AND 5882.

THIS PLAN SHOWS HORIZONTAL GROUND-LEVEL DISTANCES EXCEPT WHERE OTHERWISE NOTED. TO COMPUTE GRID DISTANCES, MULTIPLY GROUND-LEVEL DISTANCES BY COMBINED FACTOR 0.9999020.

DESCRIPTION	AREA	PARCEL	AREA
ROAD TO BE CLOSED			
PORTION OF ROAD LYING IN SEC 6 TP 9 NWD DEDICATED BY PLAN 3288	0.390 ha		
PORTION OF ROAD LYING IN SEC 6 TP 9 NWD DEDICATED BY PLAN 4300	0.750 ha		
PORTION OF ROAD LYING IN SEC 6 TP 9 NWD DEDICATED BY PLAN 5980	0.680 ha		
PORTION OF ROAD LYING IN SEC 6 TP 9 NWD DEDICATED BY PLAN 6072	0.158 ha		
PORTION OF ROAD LYING IN SEC 6 TP 9 NWD DEDICATED BY PLAN 6072	0.682 ha	PARCEL 'A'	3.84 ha
PORTION OF ROAD LYING IN SEC 6 TP 9 NWD DEDICATED BY PLAN 9888	0.991 m ²		
PORTION OF ROAD LYING IN SEC 6 TP 9 NWD DEDICATED BY HIGHWAY PLAN 28298	278.2 m ²		
PORTION OF ROAD LYING IN SEC 6 TP 9 NWD DEDICATED BY HIGHWAY PLAN 28298	0.447 ha		
PORTION OF ROAD LYING IN SEC 6 TP 9 NWD DEDICATED BY HIGHWAY PLAN 28298	0.721 ha		
PORTION OF ROAD LYING IN SEC 6 TP 9 NWD DEDICATED BY PLAN 32744	0.101 ha		
PORTION OF ROAD LYING IN SEC 6 TP 9 NWD DEDICATED BY HIGHWAY PLAN 50683	112.4 ha		
PORTION OF ROAD LYING IN SEC 31 TP 8 NWD DEDICATED BY PLAN 8870	728.8 m ²	PARCEL 'B'	0.235 ha
PORTION OF ROAD LYING IN SEC 31 TP 8 NWD DEDICATED BY HIGHWAY PLAN 50683	92.0 m ²		
PORTION OF ROAD LYING IN SEC 31 TP 8 NWD DEDICATED BY REFERENCE PLAN BCP27681	290.1 m ²		



CITY OF SURREY

MAYOR: DIANNE L. WATTS

CITY CLERK: JANE SULLIVAN

WITNESS AS TO THE SIGNATURE OF THE CITY CLERK

ADDRESS OF WITNESS

OCCUPATION OF WITNESS

THIS PLAN LIES WITHIN THE GREATER VANCOUVER REGIONAL DISTRICT

I, MONTGOMERY C. BRISSON, A BRITISH COLUMBIA LAND SURVEYOR, CERTIFY THAT I WAS PRESENT AT AND PERSONALLY SUPERVISED THE SURVEY REPRESENTED BY THIS PLAN, AND THAT THE SURVEY AND PLAN ARE CORRECT. THE FIELD SURVEY WAS COMPLETED ON THE 7TH DAY OF APRIL, 2010. THE PLAN WAS CHECKED AND CORRECTED, AND THE CHECKLIST FILED UNDER # 107488, ON THE 28TH DAY OF APRIL, 2010.

[Signature] B.C.L.S.