

CITY OF SURREY

BY-LAW NO. 17142

A By-law to close and to remove the dedication  
of a highway of a portion road.  
.....

WHEREAS pursuant to Subsection 40(1)(a) of the *Community Charter*, S.B.C. 2003, c. 26, the Council may, by by-law, close all or part of a highway that is vested in the municipality to all or some types of traffic;

AND WHEREAS pursuant to Section 40(2) of the *Community Charter*, S.B.C. 2003, c. 26, the Council may, by by-law, remove the dedication of a highway that has been closed by a by-law under Subsection 40(1)(a).

NOW THEREFORE the Council of the City of Surrey in open meeting assembled, ENACTS as follows:

1. That portion of road lying in Section 20, Block 5 North, Range 2 West, New Westminster District, shown outlined in heavy black line on a Reference Plan attached hereto, and forming part of this by-law, duly signed by the Mayor and Clerk, prepared by Gene Paul Nikula, B.C.L.S. on the 11th day of March, 2010, and more particularly described as follows:

That portion of road dedicated by Plan 8305, called Parcel "A" and containing 0.147 hectares,

(hereinafter referred to as that portion of 124 Street)

shall be closed to traffic.

2. The dedication as highway be removed of said portion of 124 Street.
3. This By-law may be cited for all purposes as "Surrey Close and Remove the Dedication of Highway of a Portion of 124 Street adjacent 12389-104 Avenue By-law, 2010, No. 17142."

READ A FIRST, SECOND AND THIRD TIME on the 22<sup>nd</sup> day of March, 2010.

NOTICE OF INTENTION

ADVERTISED on the 26<sup>th</sup> day of March and the 2<sup>nd</sup> day of April, 2010 in the SURREY NOW newspaper.

RECONSIDERED AND FINALLY ADOPTED, signed by the Mayor and Clerk, and sealed with the Corporate Seal on the 12<sup>th</sup> day of April, 2010.

\_\_\_\_\_ MAYOR

\_\_\_\_\_ CLERK

REFERENCE PLAN TO ACCOMPANY THE CITY OF SURREY  
 HIGHWAY DEDICATION CANCELLATION BYLAW NO. 17142  
 COVERING ROAD SHOWN ON PLAN 8305 SECTION 20  
 BLOCK 5 NORTH RANGE 2 WEST NEW WESTMINSTER DISTRICT

PLAN BCP \_\_\_\_\_

REF. No. \_\_\_\_\_

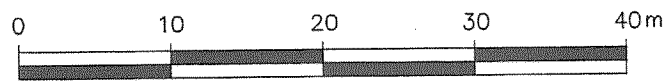
Deposited in the Land Title Office at  
 New Westminster, B.C.

This \_\_\_\_\_ day of \_\_\_\_\_ 2010.

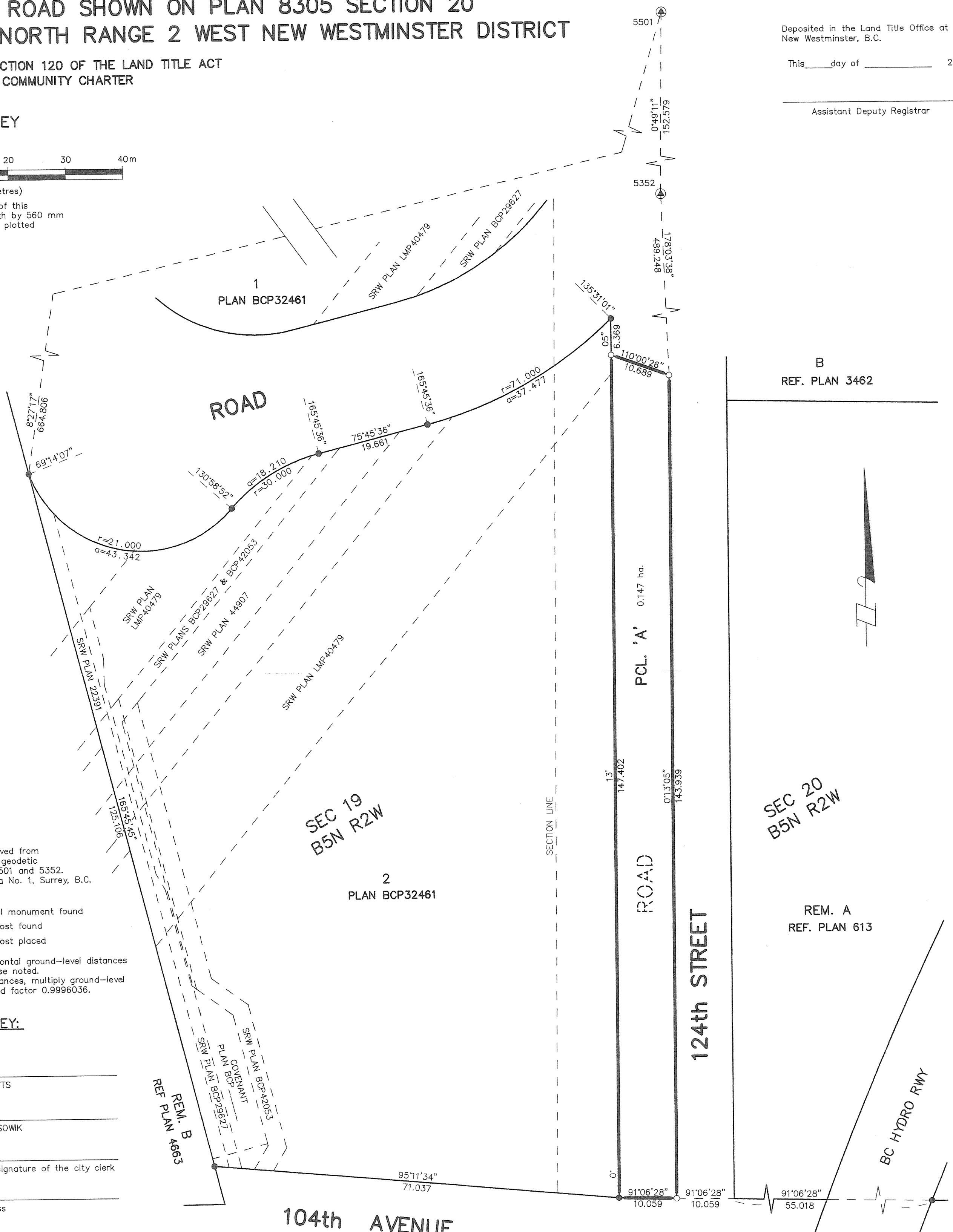
Assistant Deputy Registrar

PURSUANT TO SECTION 120 OF THE LAND TITLE ACT  
 AND SECTION 40 COMMUNITY CHARTER

BCGS 92G.016  
 CITY OF SURREY  
 SCALE 1:500



(All distances are in metres)  
 The intended plot size of this  
 plan is 432 mm in width by 560 mm  
 in height (C size) when plotted  
 at a scale of 1:500



**LEGEND**

Grid bearings are derived from  
 observations between geodetic  
 control monuments 5501 and 5352.  
 Integrated Survey Area No. 1, Surrey, B.C.  
 NAD 83 (CSRS)

- ⊙ Indicates control monument found
- Indicates iron post found
- Indicates iron post placed

This plan shows horizontal ground-level distances  
 except where otherwise noted.  
 To compute grid distances, multiply ground-level  
 distances by combined factor 0.9996036.

**CITY OF SURREY:**

MAYOR: DIANNE WATTS

CITY CLERK: JANE SOWIK

Witness as to the signature of the city clerk

Occupation of witness

Address of witness

**DHALIWAŁ & ASSOCIATES**  
**LAND SURVEYING INC.**

121 - 13140 80th Avenue  
 Surrey, B.C.  
 V3W 3B2  
 (ph) 604 501-6188  
 (fx) 604 501-6189  
 FILE : 0602006-R07.DWG

THIS PLAN LIES WITHIN THE  
 GREATER VANCOUVER REGIONAL DISTRICT

I, Gene Paul Nikula, a British Columbia  
 Land Surveyor, of Mission, in British Columbia, certify  
 that I was present at and personally superintended  
 the survey represented by this plan and that the survey  
 and plan are correct. The field survey was completed on  
 the 4th day of March, 2010. The plan was completed  
 and checked, and the checklist filed under #107689, on  
 the 11th day of March, 2010.

*Gene Nikula*

B.C.L.S. 803