

CITY OF SURREY

BY-LAW NO. 17130

A By-law to close and to remove the dedication
of a highway of portions of road.

.....

WHEREAS pursuant to Subsection 40(1)(a) of the *Community Charter*, S.B.C. 2003, c. 26, the Council may, by by-law, close all or part of a highway that is vested in the municipality to all or some types of traffic;

AND WHEREAS pursuant to Section 40(2) of the *Community Charter*, S.B.C. 2003, c. 26, the Council may, by by-law, remove the dedication of a highway that has been closed by a by-law under Subsection 40(1)(a).

NOW THEREFORE the Council of the City of Surrey in open meeting assembled, ENACTS as follows:

1. Those portions of lane and road lying in Section 15, Block 5 North, Range 1 West, New Westminster District, dedicated by Plan BCP2821, shown outlined in heavy black line on a Reference Plan attached hereto, and forming part of this by-law, duly signed by the Mayor and Clerk, prepared by Eugene O. Wong, B.C.L.S. on the 22nd day of January, 2010, and more particularly described as follows:

That portion of lane containing 26.7 square metres and called Parcel "A",

That portion of road containing 680.9 square metres and called Parcel "B",

(hereinafter referred to as those portions of road)

shall be closed to traffic.

2. The dedication as highway be removed of said portions of road.
3. This By-law may be cited for all purposes as "Surrey Close and Remove the Dedication of Highway of Portions of Road Adjacent 15807-108 Avenue By-law, 2010, No. 17130."

READ A FIRST, SECOND AND THIRD TIME on the 1st day of March, 2010.

NOTICE OF INTENTION

ADVERTISED on the 12th and 19th day of March, 2010, in the SURREY NOW newspaper.

RECONSIDERED AND FINALLY ADOPTED, signed by the Mayor and Clerk, and sealed with the Corporate Seal on the 22nd day of March, 2010.

_____ MAYOR

_____ CLERK

REFERENCE PLAN TO ACCOMPANY CITY OF SURREY
 HIGHWAY DEDICATION CANCELLATION BYLAW NO. 17130
 OF A LANE AND PORTION OF ROAD, BOTH DEDICATED BY
 PLAN BCP2821 SECTION 15 BLOCK 5 NORTH RANGE 1 WEST
 NEW WESTMINSTER DISTRICT

PLAN BCP
 REF No. _____
 DEPOSITED IN THE LAND TITLE OFFICE AT
 NEW WESTMINSTER, B.C.
 THIS DAY OF _____ 2010
 ASSISTANT DEPUTY REGISTRAR

BOOK OF REFERENCE

LEGAL DESCRIPTION	AREA	TOTAL AREA
LANE DEDICATED ON PLAN BCP2821 (PARCEL "A")	26.7 Sq.m.	707.6 Sq.m.
PORTION OF ROAD DEDICATED ON PLAN BCP2821 (PARCEL "B")	680.9 Sq.m.	

PURSUANT TO SECTION 120, LAND TITLE ACT AND
 SECTION 40(2) OF THE COMMUNITY CHARTER
 BCGS 926.027

LEGEND

SCALE 1:250



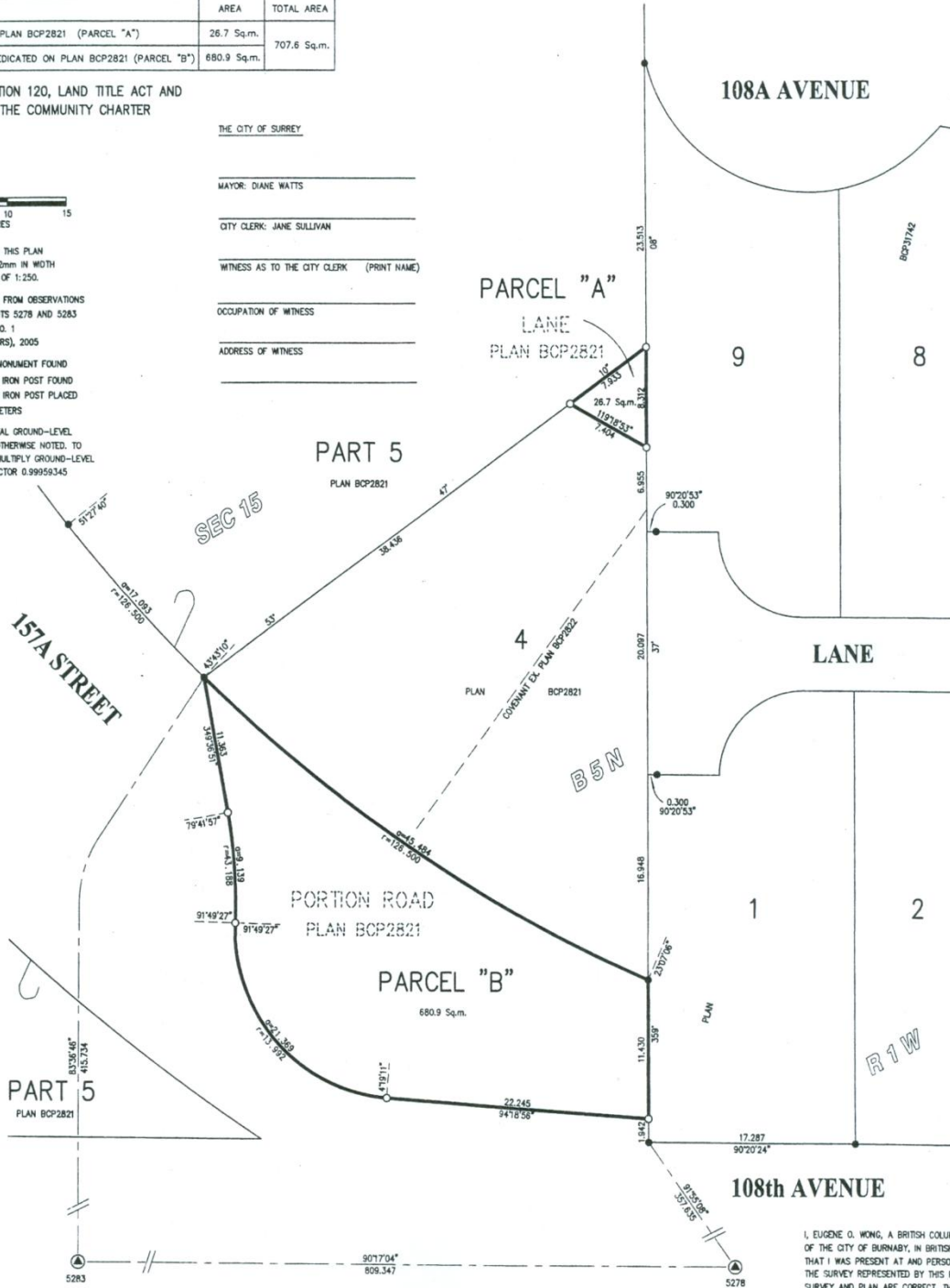
ALL DISTANCES ARE IN METRES
 THE INTENDED PLOT SIZE OF THIS PLAN IS 560mm IN HEIGHT BY 432mm IN WIDTH WHEN PLOTTED AT A SCALE OF 1:250.

GRID BEARINGS ARE DERIVED FROM OBSERVATIONS BETWEEN CONTROL MONUMENTS 5278 AND 5283 INTEGRATED SURVEY AREA NO. 1 CITY OF SURREY, NAD83 (CSRS), 2005

- ⊙ INDICATES CONTROL MONUMENT FOUND
- INDICATES STANDARD IRON POST FOUND
- INDICATES STANDARD IRON POST PLACED
- Sq.m. INDICATES SQUARE METERS

THIS PLAN SHOWS HORIZONTAL GROUND-LEVEL DISTANCES EXCEPT WHERE OTHERWISE NOTED. TO COMPUTE GRID DISTANCES, MULTIPLY GROUND-LEVEL DISTANCES BY COMBINED FACTOR 0.99959345

THE CITY OF SURREY
 MAYOR: DIANE WATTS
 CITY CLERK: JANE SULLIVAN
 WITNESS AS TO THE CITY CLERK (PRINT NAME)
 OCCUPATION OF WITNESS
 ADDRESS OF WITNESS



H.Y. AND ASSOCIATES
 LAND SURVEYING LTD.
 200, 9128 - 152nd Street
 Surrey, B.C.
 V3R 4E7
 (ph): 583-1616
 (fx): 583-1737
 Job: 093018LS
 File: 093018_SB.DWG

THIS PLAN LIES WITHIN THE
 GREATER VANCOUVER REGIONAL DISTRICT
 CITY OF SURREY

I, EUGENE O. WONG, A BRITISH COLUMBIA LAND SURVEYOR, OF THE CITY OF BURNABY, IN BRITISH COLUMBIA, CERTIFY THAT I WAS PRESENT AT AND PERSONALLY SUPERINTENDED THE SURVEY REPRESENTED BY THIS PLAN, AND THAT THE SURVEY AND PLAN ARE CORRECT, THE FIELD SURVEY WAS COMPLETED ON THE 6th DAY OF JANUARY 2010. THE PLAN WAS COMPLETED AND CHECKED, AND THE CHECKLIST FILED UNDER # 106126, ON THE 22nd DAY OF JANUARY 2010.

[Signature]
 BOLS