

CITY OF SURREY

BY-LAW NO. 17096

A By-law to close and to remove the dedication
of a highway of a portion of road.
.....

WHEREAS pursuant to Subsection 40(1)(a) of the *Community Charter*, S.B.C. 2003, c. 26, the Council may, by by-law, close all or part of a highway that is vested in the municipality to all or some types of traffic;

AND WHEREAS pursuant to Section 40(2) of the *Community Charter*, S.B.C. 2003, c. 26, the Council may, by by-law, remove the dedication of a highway that has been closed by a by-law under Subsection 40(1)(a).

NOW THEREFORE the Council of the City of Surrey in open meeting assembled, ENACTS as follows:

1. That portion of road lying in Section 15, Township 2, New Westminster District, shown outlined in heavy black line on a Reference Plan attached hereto, and forming part of this by-law, duly signed by the Mayor and Clerk, prepared by Scott E. Netherton, B.C.L.S. on the 25th day of November, 2008 and more particularly described as follows:

That portion of road dedicated on Plan 1378, called Parcel A and containing 991 square metres,

(hereinafter referred to as that portion of road)

shall be closed to traffic.

2. The dedication as highway be removed of said portion of road.
3. This By-law may be cited for all purposes as "Surrey Close and Remove the Dedication of Highway of a Portion of Dedicated Road between 64 Avenue and 65 Avenue West of 148 Street By-law, 2009, No. 17096".

READ A FIRST AND SECOND TIME on the 14th day of December, 2009.

READ A THIRD TIME, AS AMENDED, on the 11th day of January, 2010.

NOTICE OF INTENTION

ADVERTISED on the 15th and 22nd day of January, 2010 in the SURREY NOW newspaper.

RECONSIDERED AND FINALLY ADOPTED, signed by the Mayor and Clerk, and sealed with the Corporate Seal on the 25th day of January, 2010.

_____ MAYOR

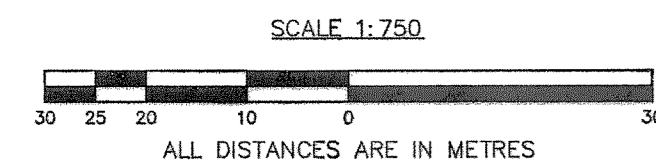
_____ CLERK

REFERENCE PLAN TO ACCOMPANY CITY OF SURREY HIGHWAY DEDICATION
 CANCELLATION BYLAW No. 17096 OF A PORTION OF ROAD
 LYING IN SEC 15 TP 2 NWD DEDICATED BY PLAN 1378
 BCGS 92G.016

PURSUANT TO SECTION 120, LAND TITLE ACT AND SECTION 40, COMMUNITY CHARTER

LEGEND

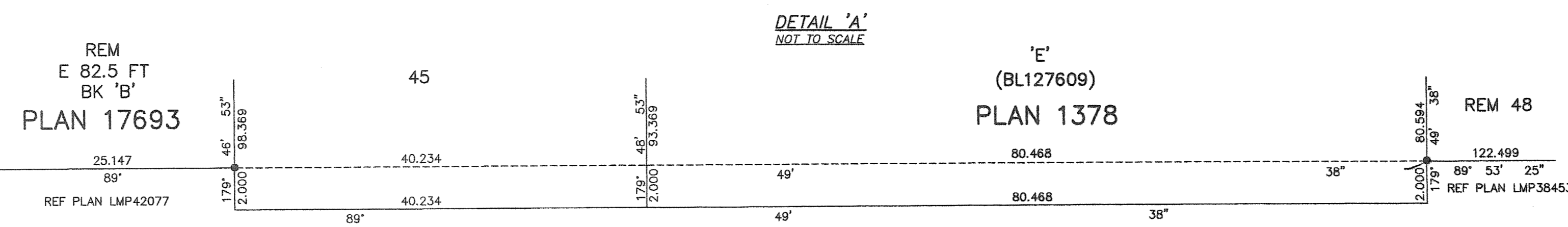
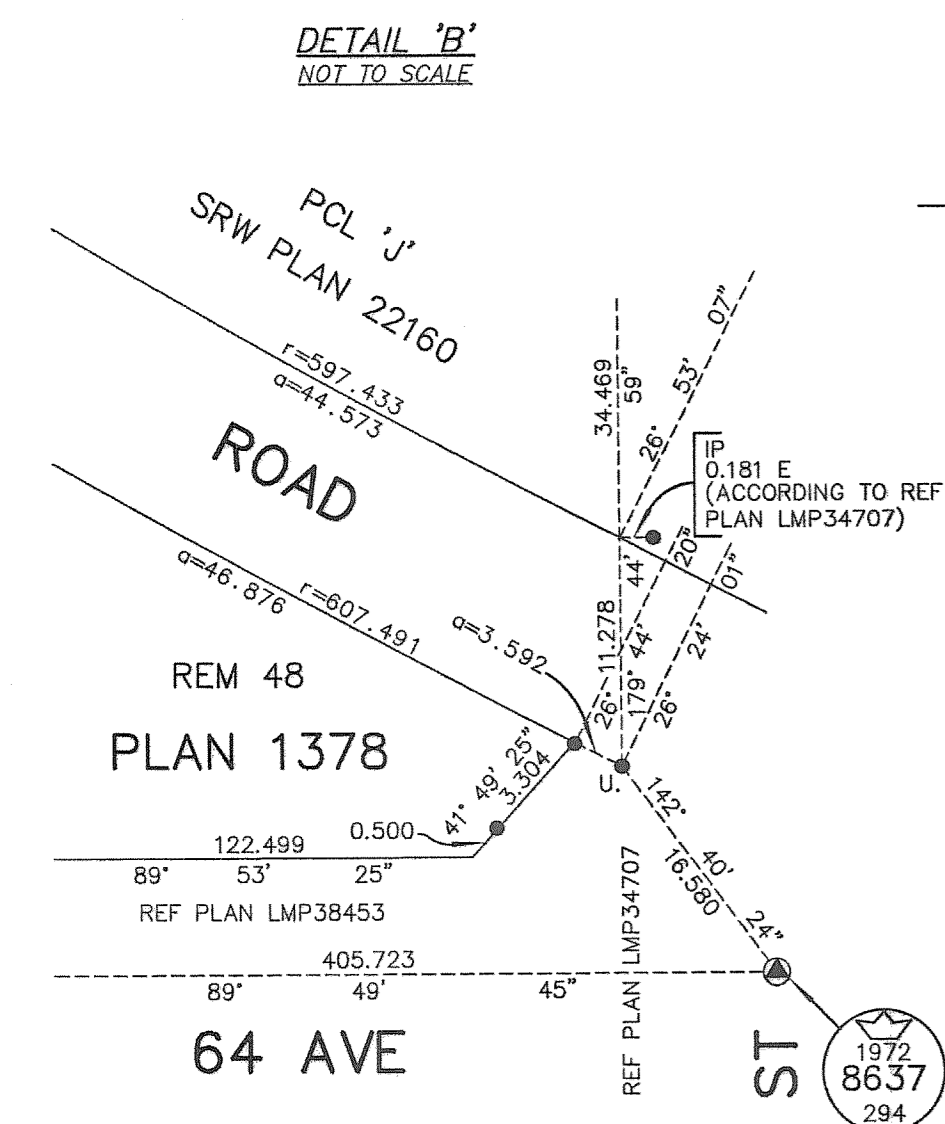
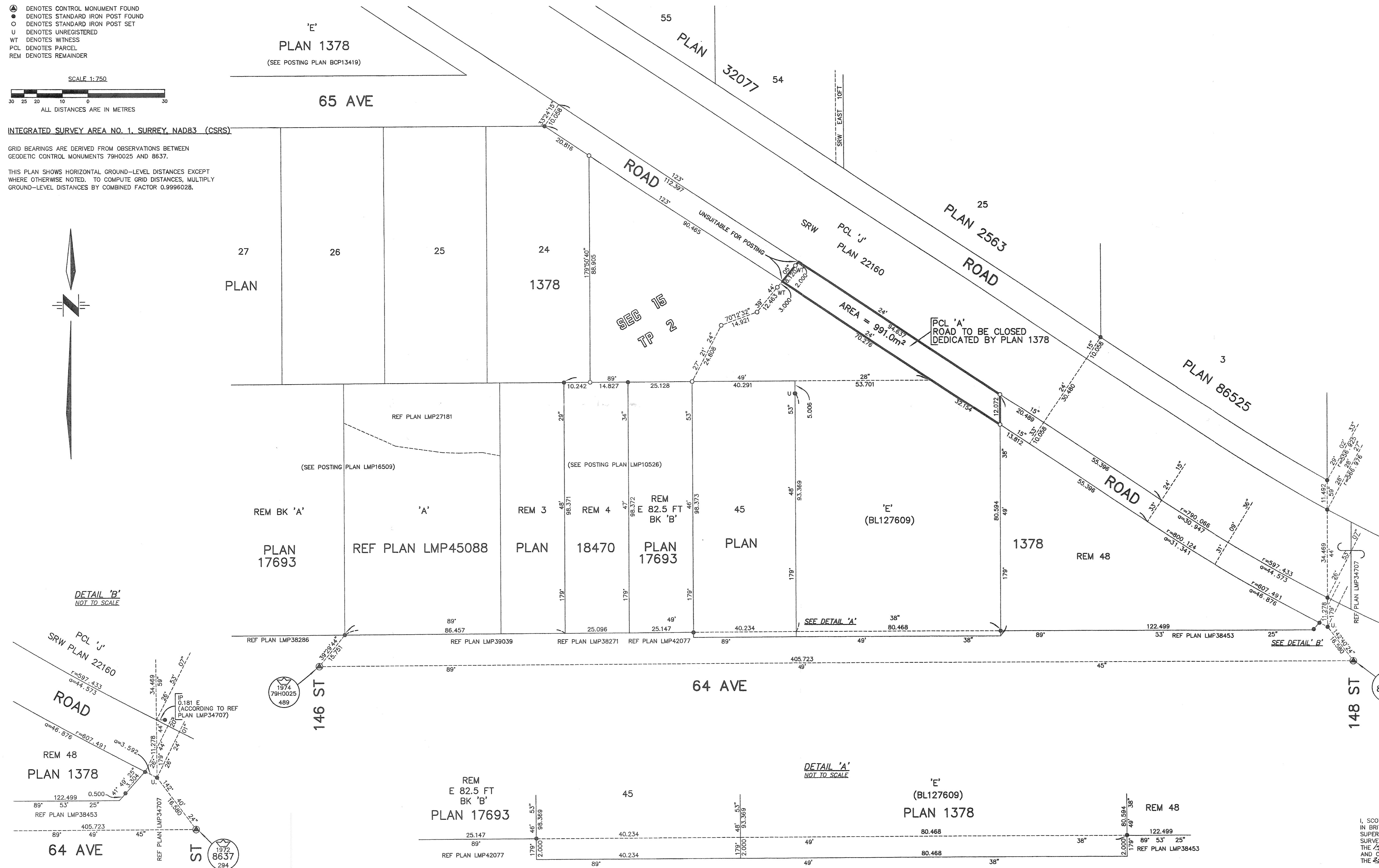
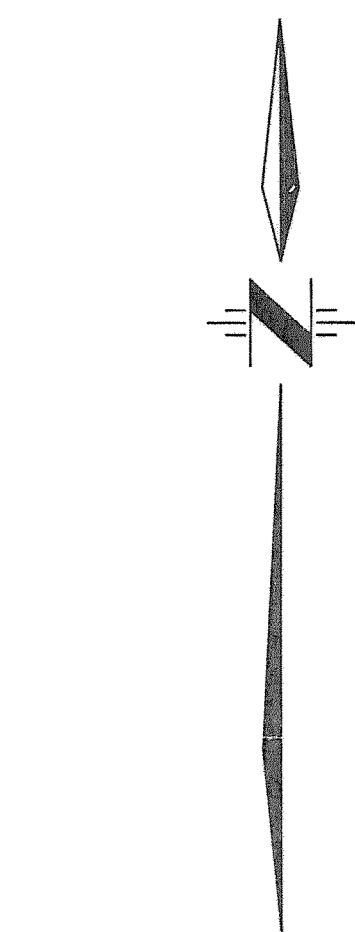
- ⊙ DENOTES CONTROL MONUMENT FOUND
- DENOTES STANDARD IRON POST FOUND
- DENOTES STANDARD IRON POST SET
- U DENOTES UNREGISTERED
- WT DENOTES WITNESS
- PCL DENOTES PARCEL
- REM DENOTES REMAINDER



INTEGRATED SURVEY AREA NO. 1, SURREY, NAD83 (CSRS)

GRID BEARINGS ARE DERIVED FROM OBSERVATIONS BETWEEN
 GEODETIC CONTROL MONUMENTS 79H0025 AND 8637.

THIS PLAN SHOWS HORIZONTAL GROUND-LEVEL DISTANCES EXCEPT
 WHERE OTHERWISE NOTED. TO COMPUTE GRID DISTANCES, MULTIPLY
 GROUND-LEVEL DISTANCES BY COMBINED FACTOR 0.9996028.



PLAN BCP - - - -

DEPOSITED IN THE LAND TITLE OFFICE
 AT NEW WESTMINSTER, B.C.
 - - - - - , 2009

REGISTRAR

CITY OF SURREY

MAYOR: DIANNE L. WATTS

CITY CLERK:

WITNESS AS TO THE SIGNATURE OF THE CITY CLERK

ADDRESS OF WITNESS

OCCUPATION OF WITNESS

INSPECTED UNDER THE LAND TITLE ACT
 THIS 15TH DAY OF SEPTEMBER 2009
S.E. Netherton
 SCOTT E. NETHERTON, B.C.L.S.

THIS PLAN LIES WITHIN THE GREATER
 VANCOUVER REGIONAL DISTRICT

I, SCOTT E. NETHERTON, A BRITISH COLUMBIA LAND SURVEYOR, OF SURREY,
 IN BRITISH COLUMBIA, CERTIFY THAT I WAS PRESENT AT AND PERSONALLY
 SUPERINTENDED THE SURVEY REPRESENTED BY THIS PLAN, AND THAT THE
 SURVEY AND PLAN ARE CORRECT. THE FIELD SURVEY WAS COMPLETED ON
 THE 12TH DAY OF November, 2008. THE PLAN WAS COMPLETED
 AND CHECKED, AND THE CHECKLIST FILED UNDER # 20362, ON
 THE 25TH DAY OF November, 2008.

S.E. Netherton
 B.C.L.S.