

CITY OF SURREY

BY-LAW NO. 17003

A By-law to close and to remove the dedication
of a highway of portions of 23 Avenue and 23A Avenue.

.....

WHEREAS pursuant to Subsection 40(1)(a) of the *Community Charter*, S.B.C. 2003, c. 26, the Council may, by by-law, close all or part of a highway that is vested in the municipality to all or some types of traffic;

AND WHEREAS pursuant to Section 40(2) of the *Community Charter*, S.B.C. 2003, c. 26, the Council may, by by-law, remove the dedication of a highway that has been closed by a by-law under Subsection 40(1)(a).

NOW THEREFORE the Council of the City of Surrey in open meeting assembled, ENACTS as follows:

1. Those portions of road lying in Section 16, Township 1, New Westminster District, shown outlined in heavy black line on a Reference Plan attached hereto, and forming part of this by-law, duly signed by the Mayor and Clerk, prepared by Montgomery C. Brisson, B.C.L.S. on the 10th day of September, and more particularly described as follows:

That portion of road dedicated by Plan 83184, called Parcel A and containing 799.9 square metres and described as follows:

(Portion of 23A Avenue)

That portion of road dedicated by Plan 83184, called Parcel B and containing 379.6 square metres and described as follows:

(Portion of 23 Avenue)

(hereinafter referred to as those portions of road)

shall be closed to traffic.

2. The dedication as highway be removed of said portions of road.
3. This By-law may be cited for all purposes as "Surrey Close and Remove the Dedication of Highway of Portions of 23A Avenue and 23 Avenue By-law, 2009, No. 17003".

READ A FIRST, SECOND AND THIRD TIME on the 14th day of September, 2009.

NOTICE OF INTENTION

ADVERTISED on the 18th and 25th day of September, 2009, in the SURREY NOW newspaper.

RECONSIDERED AND FINALLY ADOPTED, signed by the Mayor and Clerk, and sealed with the Corporate Seal on the 5th day of October, 2009.

_____ MAYOR

_____ CLERK

h:\by-laws\adopted bylaws\2009\byl 17003.docx
R 10/8/09 10:16 AM

REFERENCE PLAN TO ACCOMPANY CITY OF SURREY HIGHWAY
 DEDICATION CANCELLATION BYLAW NO. 12003 OF
 PORTIONS OF ROAD LYING IN SECTION 16 TOWNSHIP 1
 NEW WESTMINSTER DISTRICT DEDICATED BY PLAN B3184
 BCGS 92G.005

PLAN BCP _____

DEPOSITED IN THE LAND TITLE OFFICE
 AT NEW WESTMINSTER, B.C.

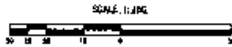
_____, 2009.

PURSUANT TO SECTION 120, LAND TITLE ACT
 PURSUANT TO SECTION 40, COMMUNITY CHARTER

REGISTRAR

LEGEND

- ⊙ DENOTES CURVED MONUMENT FOUND
- ⊙ DENOTES STRAIGHT MONUMENT FOUND
- ⊙ DENOTES STRAIGHT MONUMENT MUST SET
- REF DENOTES REFERENCE



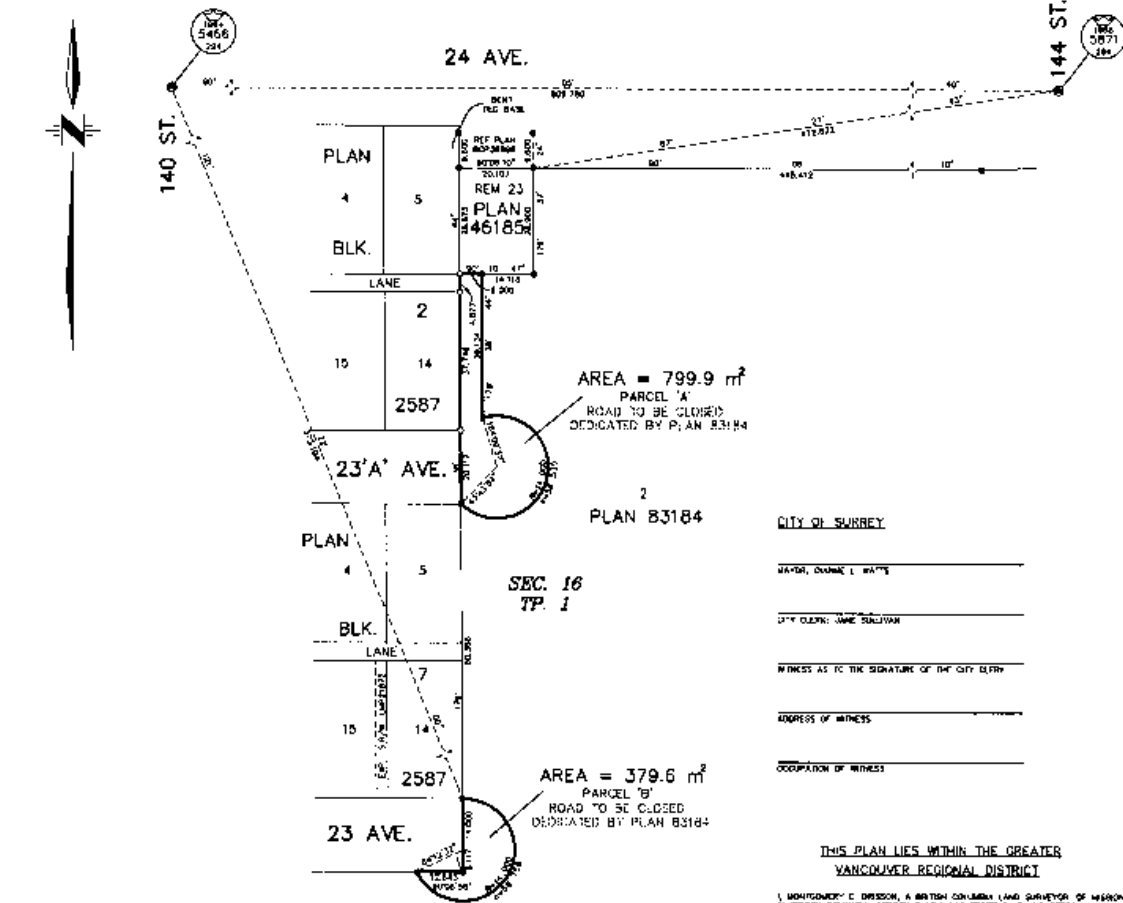
ALL DISTANCES ARE IN METRES
 THE INTENDED PRINT SIZE OF THIS PLAN IS
 432mm WIDE BY 594mm HIGH
 (USE 1/4 SHEET SIZE) WHEN PLOTTED AT A SCALE OF 1:1000

INTEGRATED SURVEY AREA NO. 1, SURREY, NAD83 (CSRS)

SPD BEARINGS ARE DERIVED FROM OBSERVATIONS OR FROM
 GEODETIC CONTROL MONUMENTS DATA AND 360°.

THIS PLAN SHOWS HORIZONTAL DISTANCES, LEVEL DISTANCES, LENGTH
 BEARS OTHERWISE NOTED. TO COMPUTE SLOPE DISTANCES, MULTIPLY
 HORIZONTAL DISTANCES BY COSINUS FACTOR CORRECTION.

DESCRIPTION	AREA	MARKED
PORTION OF ROAD LYING IN SEC 16 TP 1 N.W.D. DEDICATED BY PLAN B3184	799.9 SQ. M.	PARCEL 'A'
PORTION OF ROAD LYING IN SEC 16 TP 1 N.W.D. DEDICATED BY PLAN B3184	379.6 SQ. M.	PARCEL 'B'



CITY OF SURREY

 MAYOR, CHANCE L. WATTS

 CITY CLERK, JANE SULLIVAN

 WITNESS AS TO THE SIGNATURE OF THE CITY CLERK

 ADDRESS OF WITNESS

 OCCUPATION OF WITNESS

THIS PLAN LIES WITHIN THE GREATER
 VANCOUVER REGIONAL DISTRICT

I, MONTGOMERY D. BRIDSON, A BRITISH COLUMBIA LAND SURVEYOR OF MARCH
 IN BRITISH COLUMBIA, CERTIFY THAT I WAS PRESENT AT AND PERSONALLY
 SUPERVISED THE SURVEY REPRESENTED BY THIS PLAN AND THAT THE
 SURVEY AND PLAN ARE CORRECT. THE FIELD SURVEY WAS COMPLETED ON
 THE 8TH DAY OF MAY, 2009. THE PLAN WAS COMPLETED
 AND CHECKED AND THE CHECKLIST FILED UNDER # _____ ON
 THE _____ DAY OF SEPTEMBER, 2009.

B.C.L.S.

CITY OF SURREY
 SURVEY SECTION
 1425 - 58 AVE
 SURREY, B.C. V3Z 5A2
 TEL: (604) 591-4152
 FAX: (604) 591-8863

SI 1068.0/09