

CITY OF SURREY

BY-LAW NO. 16955

A By-law to close and to remove the dedication
of a highway of a portion of 89 Avenue.

.....

WHEREAS pursuant to Subsection 40(1)(a) of the *Community Charter*, S.B.C. 2003, c. 26, the Council may, by by-law, close all or part of a highway that is vested in the municipality to all or some types of traffic;

AND WHEREAS pursuant to Section 40(2) of the *Community Charter*, S.B.C. 2003, c. 26, the Council may, by by-law, remove the dedication of a highway that has been closed by a by-law under Subsection 40(1)(a).

NOW THEREFORE the Council of the City of Surrey in open meeting assembled, ENACTS as follows:

1. That portion of road lying in Section 32, Township 2 New Westminster District, shown outlined in heavy black line on a Reference Plan attached hereto, and forming part of this by-law, duly signed by the Mayor and Clerk, prepared by Gene Paul Nikula, B.C.L.S. on the 27th day of May, 2009, and more particularly described as follows:

That portion of road dedicated on Plan BCP21460, called Parcel "A"
and containing 127.7 square metres,

(hereinafter referred to as that portion of 89 Avenue)

shall be closed to traffic.

2. The dedication as highway be removed of said portion of 89 Avenue.
3. This By-law may be cited for all purposes as "Surrey Close and Remove the Dedication of Highway of a Portion of 89 Avenue at 135A Street By-law, 2009, No. 16955".

READ A FIRST, SECOND AND THIRD TIME on the 15th day of June, 2009.

NOTICE OF INTENTION

ADVERTISED on the 19th and 26th day of June, 2009, in the SURREY NOW newspaper.

RECONSIDERED AND FINALLY ADOPTED, signed by the Mayor and Clerk, and sealed with the Corporate Seal on the 29th day of June, 2009.

_____ MAYOR

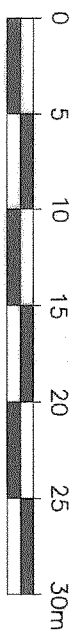
_____ CLERK

**REFERENCE PLAN TO ACCOMPANY THE CITY OF SURREY
HIGHWAY DEDICATION CANCELLATION BYLAW NO. 16955 COVERING
ROAD SHOWN ON PLAN BCP21460 SECTION 32 TOWNSHIP 2
NEW WESTMINSTER DISTRICT**

**B.C.G.S. 92G016
CITY OF SURREY**

LEGEND

SCALE 1:400



(All distances are in metres)

Grid bearings are derived from observations between geodetic control monuments 80H2092 and 80H2091, Integrated Survey Area No. 1, Surrey, B.C. NAD 83 (CSRS)

- Indicates control monument found
- Indicates iron post found
- Indicates iron post placed
- Indicates lead plug found
- Wt. Indicates witness

This plan shows horizontal ground-level distances, except where otherwise noted. To compute grid distances, multiply ground-level distances by combined factor 0.999959735.

CITY OF SURREY

MAYOR: DIANNE WATTS

CITY CLERK: JANE SOWIK

WITNESS AS TO THE SIGNATURE OF THE CITY CLERK

Occupation of witness

Address of witness

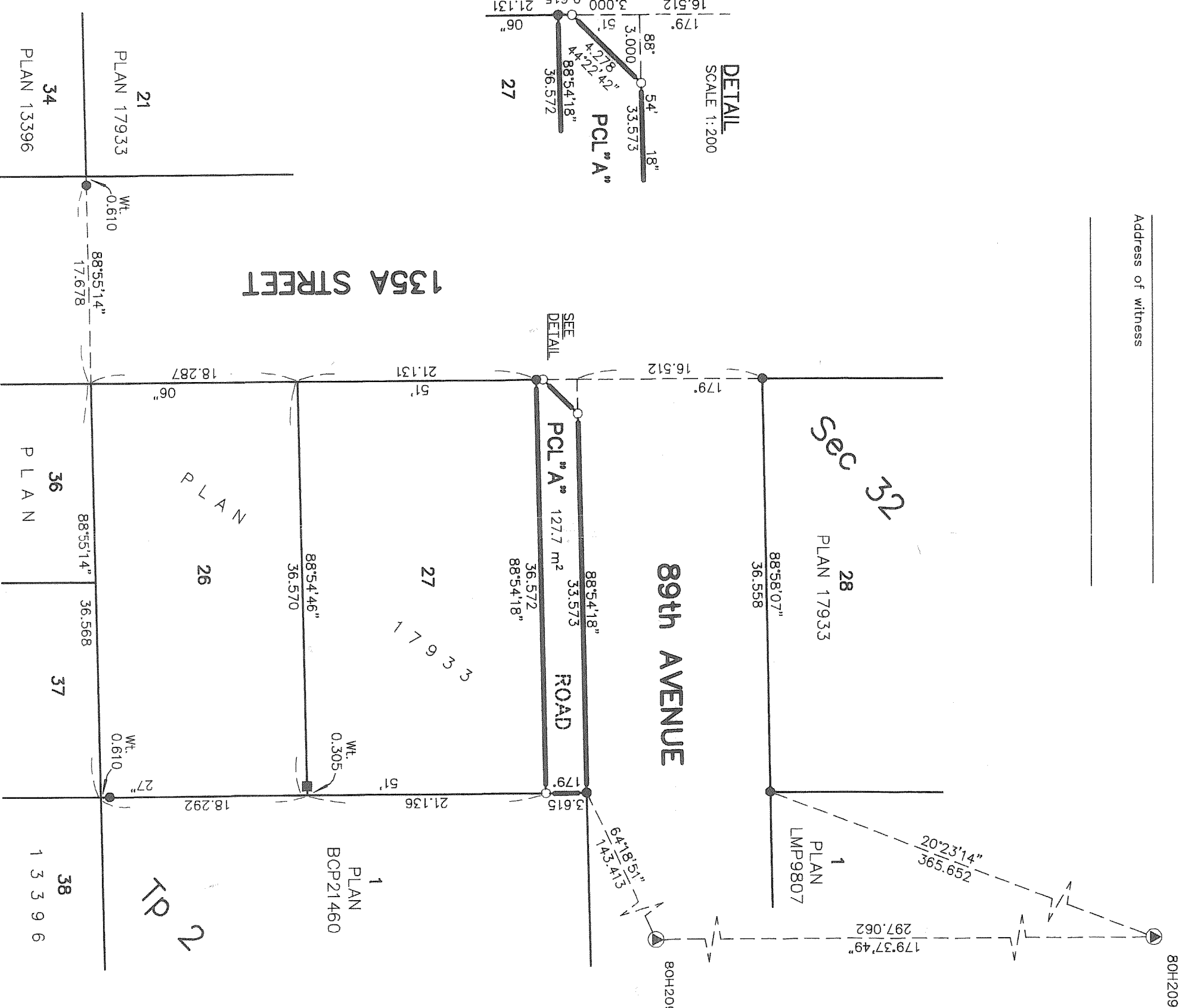
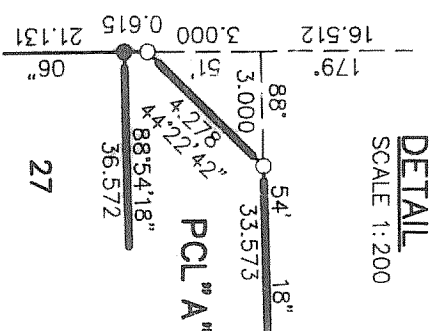
PLAN BCP

REF. No. _____

Deposited in the Land Title Office at
New Westminster, B.C.

This _____ day of _____ 2009.

Assistant Deputy Registrar



I, Gene Paul Nikula, a British Columbia land surveyor, of Mission, in British Columbia, certify that I was present at and personally superintended the survey represented by this plan, and that the survey and plan are correct. The field survey was completed on the 21st day of May, 2009. The plan was completed and checked, and the checklist filed under #96736, on the 27th day of May 2009.

Gene Paul Nikula

B.C.L.S. 803

**DHALIWAL & ASSOCIATES
LAND SURVEYING INC.**

121 - 13140 80th Avenue
Surrey, B.C.
V3W 3B2
(Ph) 604 501-6188
(fx) 604 501-6189
FILE : 0904003-RX1.DWG

THIS PLAN LIES WITHIN THE GREATER VANCOUVER REGIONAL DISTRICT