

CITY OF SURREY

BY-LAW NO. 16803

A By-law to close and to remove the dedication
of a highway of a portion of 75A Avenue.

.....

WHEREAS pursuant to Subsection 40(1)(a) of the *Community Charter*, S.B.C. 2003, c. 26, the Council may, by by-law, close all or part of a highway that is vested in the municipality to all or some types of traffic;

AND WHEREAS pursuant to Section 40(2) of the *Community Charter*, S.B.C. 2003, c. 26, the Council may, by by-law, remove the dedication of a highway that has been closed by a by-law under Subsection 40(1)(a).

NOW THEREFORE the Council of the City of Surrey in open meeting assembled, ENACTS as follows:

1. That portion of road lying in Section 21 Township 2 New Westminster District, shown outlined in heavy black line on a Reference Plan attached hereto, and forming part of this by-law, duly signed by the Mayor and Clerk, prepared by William P. Wong, B.C.L.S. on the 16th day of October, 2008, and more particularly described as follows:

That portion of road dedicated by Plan 18322, called Parcel A and containing 895.6 square metres,

(hereinafter referred to as that portion of 75A Avenue)

shall be closed to traffic.

2. The dedication as highway be removed of said portion of 75A Avenue.
3. This By-law may be cited for all purposes as "Surrey Close and Remove the Dedication of Highway of a Portion of 75A Avenue at 138 Street By-law, 2008, No. 16803."

READ A FIRST, SECOND AND THIRD TIME on the 3rd day of November, 2008.

NOTICE OF INTENTION

ADVERTISED on the 7th and 14th day of November, 2008, in the SURREY NOW newspaper.

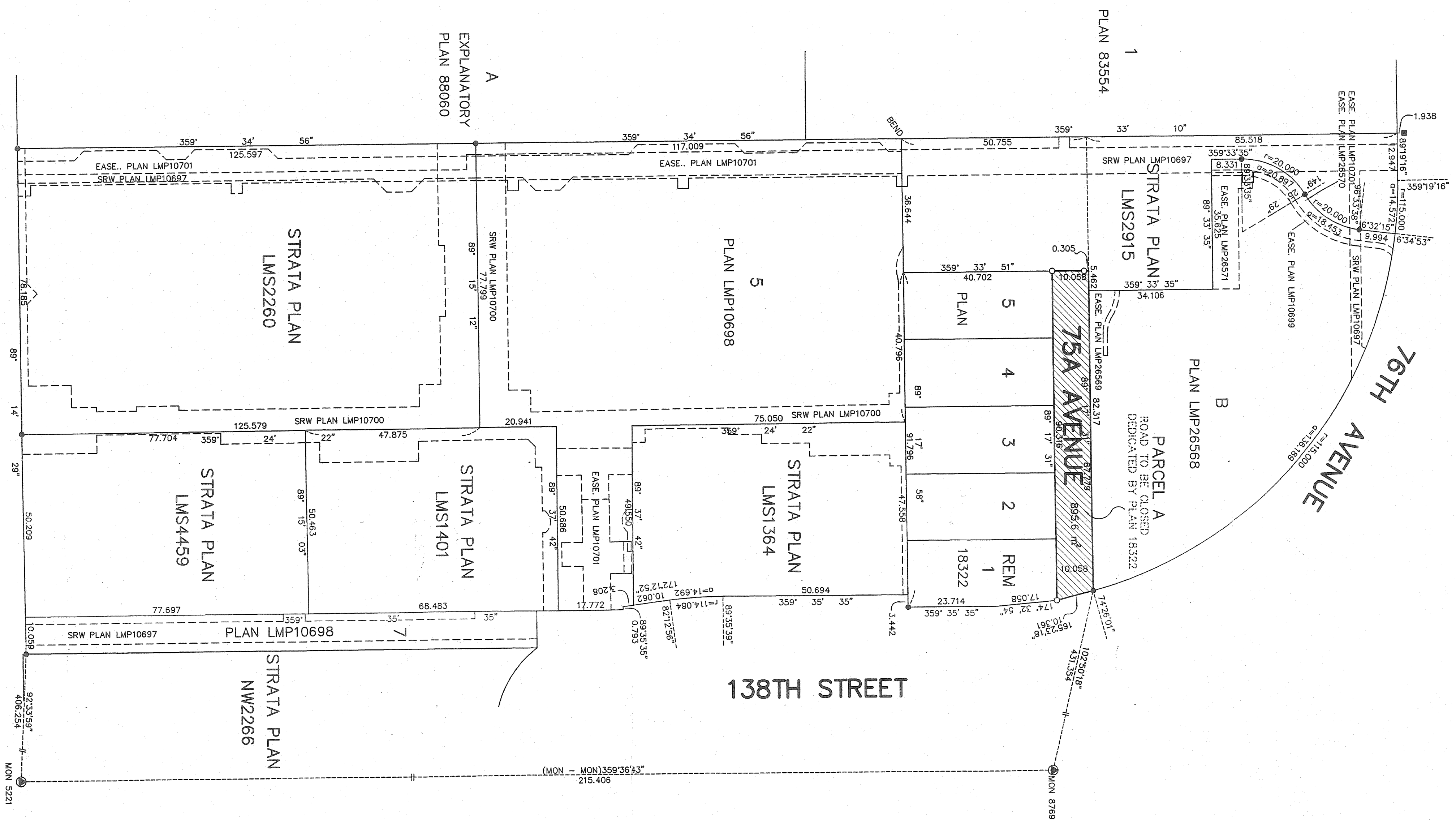
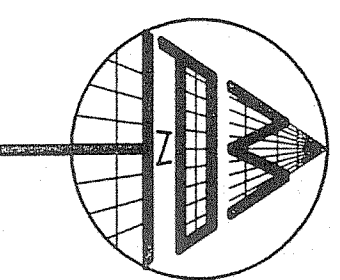
RECONSIDERED AND FINALLY ADOPTED, signed by the Mayor and Clerk, and sealed with the Corporate Seal on the 24th day of November, 2008.

_____ MAYOR

_____ CLERK

REFERENCE PLAN TO ACCOMPANY CITY OF SURREY HIGHWAY DEDICATION
 CANCELLATION BYLAW NUMBER 16003 OF A PORTION OF ROAD LYING IN
 SECTION 21 TOWNSHIP 2 NEW WESTMINSTER DISTRICT
 DEDICATED BY PLAN 18322

BCS 92G.016
 PURSUANT TO SECTION 120, LAND TITLE ACT
 PURSUANT TO SECTION 40, COMMUNITY CHARTER



LEGEND
 SCALE 1:750

- ALL DISTANCES ARE IN METRES
- GRD BEARINGS ARE DERIVED FROM OBSERVATIONS BETWEEN GEODETIC CONTROL MONUMENTS 5221 AND 8789, NAD83 (CSRS) INTERGRADED SURVEY AREA NO. 1, SURREY
- INDICATES CONTROL MONUMENT FOUND
- INDICATES STANDARD IRON POST FOUND
- INDICATES LEAD PILE FOUND
- INDICATES MONUMENT
- MON
- THIS PLAN SHOWS HORIZONTAL, GROUND-LEVEL DISTANCES EXCEPT WHERE OTHERWISE NOTED. TO COMPUTE GRID DISTANCES, MULTIPLY GROUND-LEVEL DISTANCES BY COMBINED FACTOR 0.9995938.
- INDICATES PORTION OF ROAD TO BE CLOSED

PLAN BCP

REF. NO.

DEPOSITED IN THE LAND TITLE OFFICE
 AT NEW WESTMINSTER, B.C.
 THIS DAY OF _____ 2008.

REGISTRAR

CITY OF SURREY
 MAYOR: DIANNE L. WATTS
 CITY CLERK:
 WITNESS AS TO THE SIGNATURE OF THE CITY CLERK
 OCCUPATION OF WITNESS
 ADDRESS OF WITNESS

THIS PLAN LIES WITHIN THE
 GREATER VANCOUVER REGIONAL DISTRICT

I, WILLIAM P. WONG, A BRITISH COLUMBIA LAND SURVEYOR, OF
 THE CITY OF BURNABY, IN BRITISH COLUMBIA, CERTIFY THAT I
 WAS PRESENT AT AND PERSONALLY SUPERINTENDED THE SURVEY
 REPRESENTED BY THIS PLAN, AND THAT THE SURVEY AND PLAN
 ARE CORRECT. THE FIELD SURVEY WAS COMPLETED ON
 THE 16TH DAY OF OCTOBER, 2008.
 THE PLAN WAS COMPLETED AND CHECKED, AND THE
 CHECKLIST FILED UNDER #89311 ON
 THE 16TH DAY OF OCTOBER, 2008.

MATSON PECK & TOPLUSS
 SURVEYORS & ENGINEERS
 #420-11120 HORSESHOE WAY
 RICHMOND, B.C.
 V7A 5H7
 PH: 604-270-8331
 FAX: 604-270-4137
 CADFILE: 15615-005-REF-000.DWG
 S-08-15615-REFERENCE

W.P. Wong
 B.C.L.S. (#697)