

CITY OF SURREY

BY-LAW NO. 16782

A By-law to close and to remove the dedication  
of highway of a portion of Road.

.....

WHEREAS pursuant to Subsection 40(1)(a) of the *Community Charter*, S.B.C. 2003, c. 26, the Council may, by by-law, close all or part of a highway that is vested in the municipality to all or some types of traffic;

AND WHEREAS pursuant to Section 40(2) of the *Community Charter*, S.B.C. 2003, c. 26, the Council may, by by-law, remove the dedication of a highway that has been closed by a by-law under Subsection 40(1)(a).

NOW THEREFORE the Council of the City of Surrey in open meeting assembled, ENACTS as follows:

1. That portion of road lying in Section 31 Township 2 New Westminster District, shown outlined in heavy black line on a Reference Plan attached hereto, and forming part of this by-law, duly signed by the Mayor and Clerk, prepared by Scott E. Netherton, B.C.L.S. on the 23rd day of September, 2008, and more particularly described as follows:

That portion of road dedicated on Plan 15695, called Parcel "A"  
and containing 352.9 square metres,

(hereinafter referred to as that portion of Road)

shall be closed to traffic.

2. The dedication as highway be removed of said portion of Road.
3. This By-law may be cited for all purposes as "Surrey Close and Remove the Dedication of Highway of a Portion of Unopened Road at 123 Street and 94A Avenue By-law, 2008, No. 16782".

READ A FIRST, SECOND AND THIRD TIME on the 6th day of October, 2008.

NOTICE OF INTENTION

ADVERTISED on the 10th and 17th day of October, 2008, in the SURREY NOW newspaper.

RECONSIDERED AND FINALLY ADOPTED, signed by the Mayor and Clerk, and sealed with the Corporate Seal on the 24th day of November, 2008.

\_\_\_\_\_ MAYOR

\_\_\_\_\_ CLERK

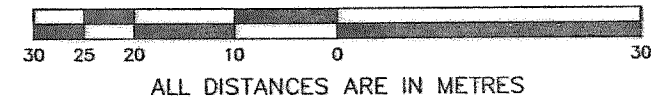
REFERENCE PLAN TO ACCOMPANY CITY OF SURREY HIGHWAY  
 DEDICATION CANCELLATION BYLAW No. 16782 OF A PORTION  
 OF ROAD LYING IN SEC 31 TP 2 DEDICATED BY PLAN 15695  
 NEW WESTMINSTER DISTRICT  
 BCGS 92G.016

PURSUANT TO SECTION 120, LAND TITLE ACT  
 PURSUANT TO SECTION 40, COMMUNITY CHARTER

LEGEND

- ⊙ DENOTES CONTROL MONUMENT FOUND
- DENOTES STANDARD IRON POST FOUND
- DENOTES STANDARD IRON POST SET

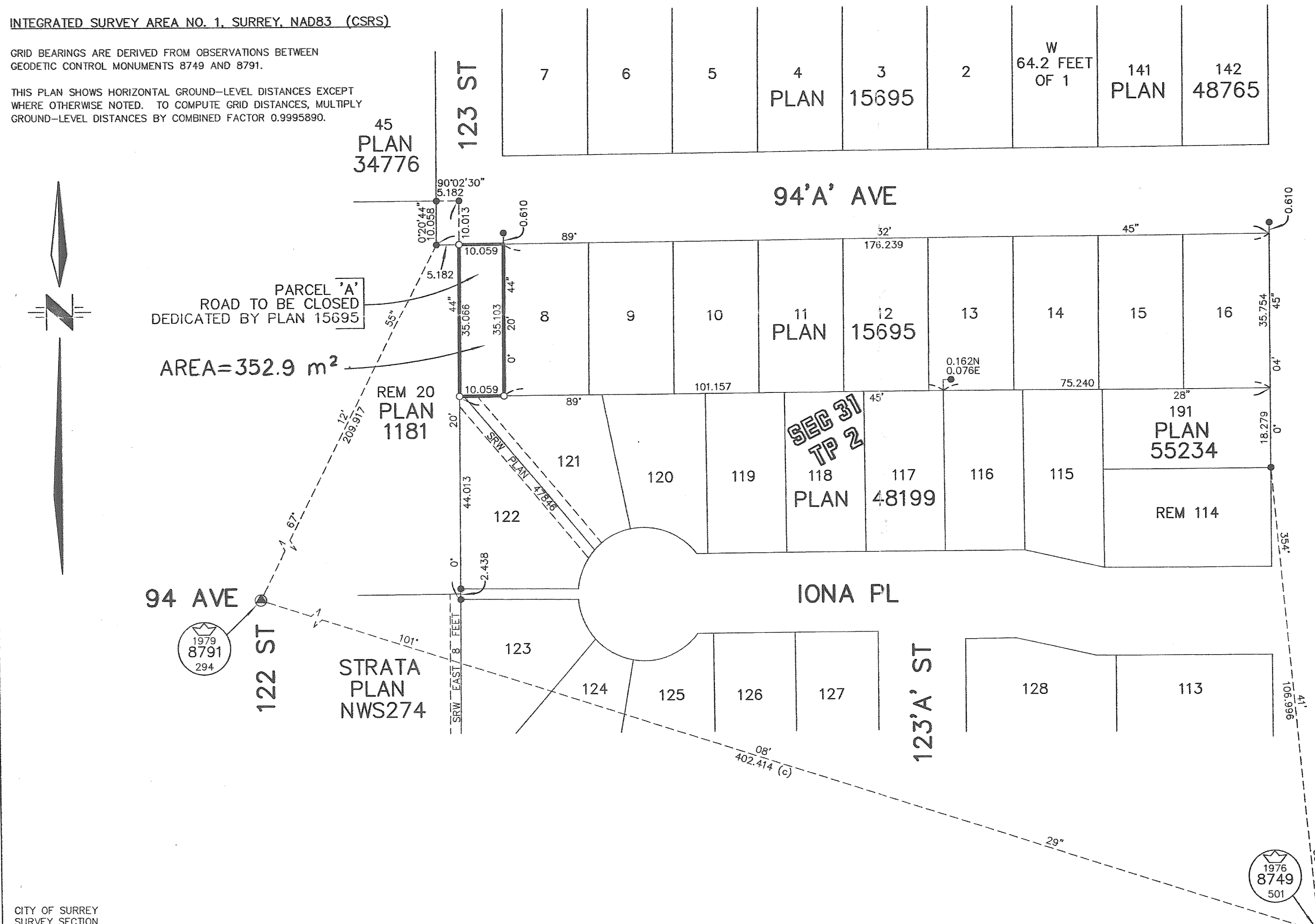
SCALE 1:750



INTEGRATED SURVEY AREA NO. 1, SURREY, NAD83 (CSRS)

GRID BEARINGS ARE DERIVED FROM OBSERVATIONS BETWEEN  
 GEODETIC CONTROL MONUMENTS 8749 AND 8791.

THIS PLAN SHOWS HORIZONTAL GROUND-LEVEL DISTANCES EXCEPT  
 WHERE OTHERWISE NOTED. TO COMPUTE GRID DISTANCES, MULTIPLY  
 GROUND-LEVEL DISTANCES BY COMBINED FACTOR 0.9995890.



PLAN BCP \_ \_ \_ \_

DEPOSITED IN THE LAND TITLE OFFICE  
 AT NEW WESTMINSTER, B.C.

\_\_\_\_\_, 2008.

REGISTRAR

CITY OF SURREY

MAYOR; DIANNE L. WATTS

CITY CLERK; (SIGN AND PRINT NAME CLEARLY)

WITNESS AS TO THE SIGNATURE OF THE CITY CLERK  
 (SIGN AND PRINT NAME CLEARLY)

ADDRESS OF WITNESS

OCCUPATION OF WITNESS

THIS PLAN LIES WITHIN THE GREATER  
 VANCOUVER REGIONAL DISTRICT

I, SCOTT E. NETHERTON, A BRITISH COLUMBIA LAND SURVEYOR, OF SURREY,  
 IN BRITISH COLUMBIA, CERTIFY THAT I WAS PRESENT AT AND PERSONALLY  
 SUPERINTENDED THE SURVEY REPRESENTED BY THIS PLAN, AND THAT THE  
 SURVEY AND PLAN ARE CORRECT. THE FIELD SURVEY WAS COMPLETED ON  
 THE 23<sup>RD</sup> DAY OF SEPTEMBER, 2008. THE PLAN WAS COMPLETED  
 AND CHECKED, AND THE CHECKLIST FILED UNDER # 87282, ON  
 THE 22<sup>ND</sup> DAY OF SEPTEMBER, 2008.

*S.E. Netherton*

B.C.L.S.

CITY OF SURREY  
 SURVEY SECTION

14245 - 56 AVE.  
 SURREY, B.C. V3X 3A2  
 TEL. (604) 591-4253  
 FAX. (604) 591-8693