

CITY OF SURREY

BY-LAW NO. 16769

A By-law to close and to remove the dedication
of highway of a portion of Lane.

.....

WHEREAS pursuant to Subsection 40(1)(a) of the *Community Charter*, S.B.C. 2003, c. 26, the Council may, by by-law, close all or part of a highway that is vested in the municipality to all or some types of traffic;

AND WHEREAS pursuant to Section 40(2) of the *Community Charter*, S.B.C. 2003, c. 26, the Council may, by by-law, remove the dedication of a highway that has been closed by a by-law under Subsection 40(1)(a).

NOW THEREFORE the Council of the City of Surrey in open meeting assembled, ENACTS as follows:

1. That portion of lane lying in Section 26, Block 5 North, Range 2 West, New Westminster District, shown outlined in heavy black line on a Reference Plan attached hereto, and forming part of this by-law, duly signed by the Mayor and Clerk, prepared by A.M. Osman, B.C.L.S. on the 8th day of September, and more particularly described as follows:

That portion of lane dedicated on Reference Plan 15485, called
Parcel "A" and containing 521.5 square metres,

(hereinafter referred to as that portion of Lane)

shall be closed to traffic.

2. The dedication as highway be removed of said portion of Lane.
3. This By-law may be cited for all purposes as "Surrey Close and Remove the Dedication of Highway of a Portion of Lane at 102 Avenue and East Whalley Ring Road By-law, 2008, No. 16769".

READ A FIRST, SECOND AND THIRD TIME on the 29th day of September, 2008.

NOTICE OF INTENTION

ADVERTISED on the 3rd and 10th day of October, 2008, in the SURREY NOW newspaper.

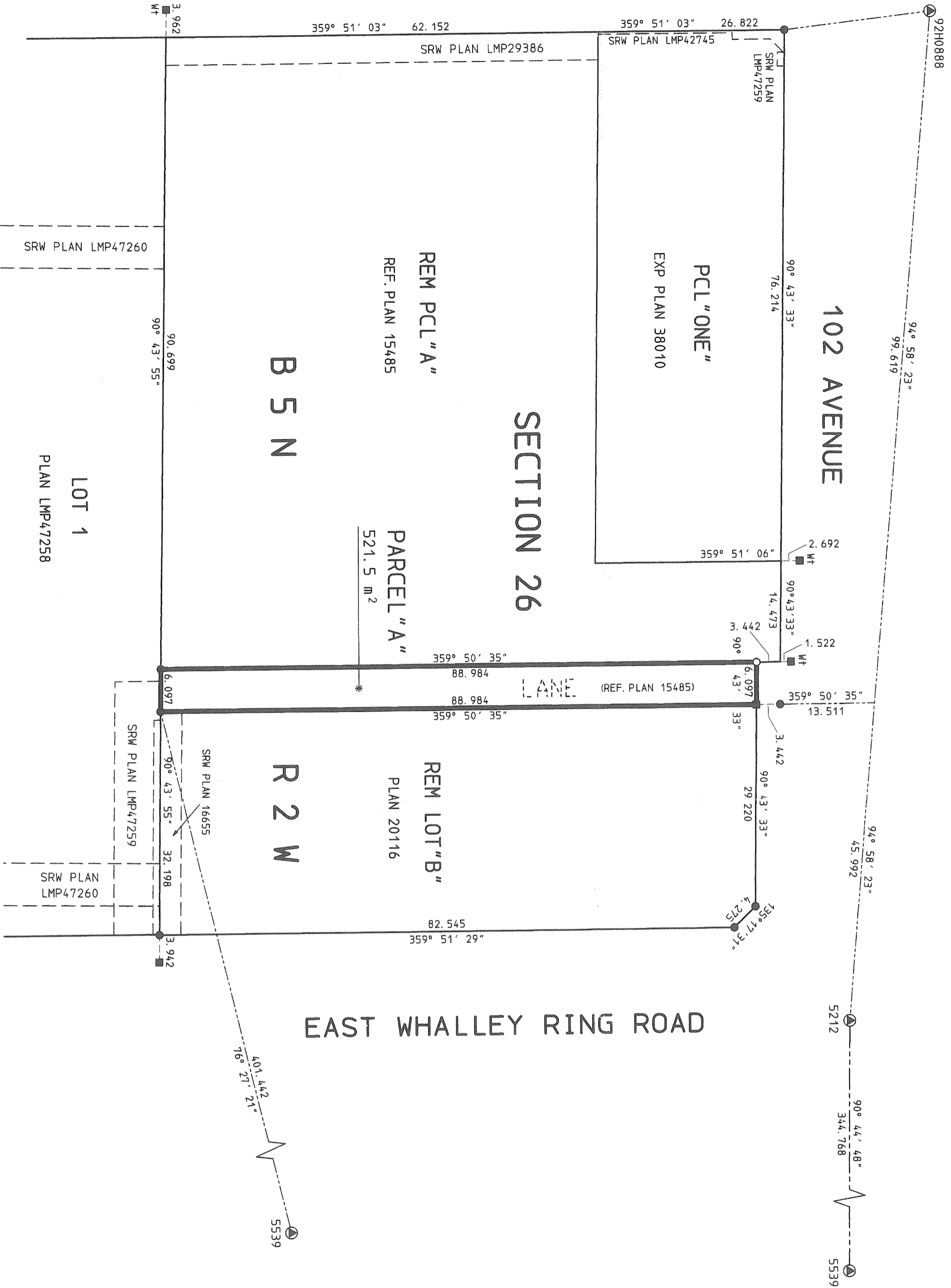
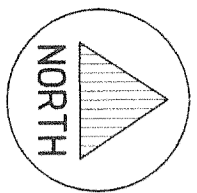
RECONSIDERED AND FINALLY ADOPTED, signed by the Mayor and Clerk, and sealed with the Corporate Seal on the 20th day of October, 2008.

_____ MAYOR

_____ CLERK

**REFERENCE PLAN TO ACCOMPANY THE CITY OF SURREY
HIGHWAY CANCELLATION BYLAW NO. 16769, OF A
PORTION OF LANE DEDICATED BY REF. PLAN 15485
SECTION 26, BLOCK 5 NORTH, RANGE 2 WEST
NEW WESTMINSTER DISTRICT**

PURSUANT TO SECTION 120 OF THE L.T.A.
B. C. G. S. 92G. 016
SCALE 1:500



INTEGRATED SURVEY AREA No. 1
CITY OF SURREY, NAD83 (CSRS)
GRID BEARINGS ARE DERIVED FROM OBSERVATION BETWEEN
GEODETIC CONTROL MONUMENTS 5212 AND 5539.
THIS PLAN SHOWS HORIZONTAL GROUND-LEVEL MEASURED
DISTANCES EXCEPT WHERE OTHERWISE NOTED.
TO COMPUTE GRID DISTANCES, MULTIPLY GROUND-LEVEL
DISTANCES BY COMBINED FACTOR OF 0.9995924.
DISTANCES ARE IN METRES AND DECIMALS THEREOF,
EXCEPT WHERE OTHERWISE NOTED.

- ⊙ DENOTES CONTROL MONUMENT
- DENOTES LEAD PLUG FOUND
- DENOTES STANDARD IRON POST FOUND
- † DENOTES WITNESS
- DENOTES STANDARD IRON POST PLACED

PLAN BCP

DEPOSITED IN THE LAND TITLE OFFICE
AT NEW WESTMINSTER, B. C.

THIS _____ DAY OF _____, 20__

REGISTRAR

THE CITY OF SURREY
BY ITS AUTHORIZED SIGNATORIES

MAYOR - DIANNE WATTS

CLERK - MARGARET JONES

WITNESS AS TO BOTH SIGNATURES
Clerk

PRINTED NAME OF WITNESS

OCCUPATION

ADDRESS

I, A. M. OSMAN, A BRITISH COLUMBIA LAND SURVEYOR
OF LANGLEY, BRITISH COLUMBIA, CERTIFY THAT I WAS
PRESENT AT AND PERSONALLY SUPERINTENDED THE
SURVEY REPRESENTED BY THIS PLAN AND THAT THE
SURVEY AND PLAN ARE CORRECT. THE FIELD SURVEY
WAS COMPLETED ON THE 2ND DAY OF AUGUST, 2008
THE PLAN WAS COMPLETED AND CHECKED, AND THE
CHECKLIST FILED UNDER ECP # 86462 ON THE
8TH DAY OF SEPTEMBER, 2008

[Signature] BCLS

THIS PLAN LIES WITHIN THE GREATER VANCOUVER REGIONAL DISTRICT

Isaak, Osman
& Associates
B. C. LAND SURVEYORS
20609 LOGAN AVENUE
LANGLEY B. C. V3A-7R3
TEL: 604-533-2411
FILE: 14485-10.REF