

CITY OF SURREY

BY-LAW NO. 16753

A By-law to close and to remove the dedication
of a highway of portions of 137B Street.

.....

WHEREAS pursuant to Subsection 40(1)(a) of the *Community Charter*, S.B.C. 2003, c. 26, the Council may, by by-law, close all or part of a highway that is vested in the municipality to all or some types of traffic;

AND WHEREAS pursuant to Section 40(2) of the *Community Charter*, S.B.C. 2003, c. 26, the Council may, by by-law, remove the dedication of a highway that has been closed by a by-law under Subsection 40(1)(a).

NOW THEREFORE the Council of the City of Surrey in open meeting assembled, ENACTS as follows:

1. Those portions of road lying in Section 35, Block 5 North, Range 2 West, New Westminster District, shown outlined in heavy black line on a Reference Plan attached hereto, and forming part of this by-law, duly signed by the Mayor and Clerk, prepared by Kenneth W.Schuurman, B.C.L.S. on the 7th day of June, 2008, and more particularly described as follows:

That portion of road dedicated on Plan 14725, called Parcel "A"
and containing 440.9 square metres,

That portion of road dedicated on Plan 17876, called Parcel "B"
and containing 440.9 square metres,

(hereinafter referred to as those portions of 137B Street)

shall be closed to traffic.

2. The dedication as highway be removed of said portions of 137B Street.
3. This By-law may be cited for all purposes as "Surrey Close and Remove the Dedication of Highway of a Portion of 137B Street at 96 Avenue By-law, 2008, No. 16753".

READ A FIRST, SECOND AND THIRD TIME on the 8th day of September, 2008.

NOTICE OF INTENTION

ADVERTISED on the 12th and 19th day of September, 2008, in the SURREY NOW newspaper.

RECONSIDERED AND FINALLY ADOPTED, signed by the Mayor and Clerk, and sealed with the Corporate Seal on the 29th day of September, 2008.

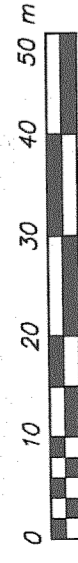
_____ MAYOR

_____ CLERK

**REFERENCE PLAN TO ACCOMPANY CITY OF SURREY
HIGHWAY DEDICATION BYLAW NO. 16753
OF A PORTION OF ROAD DEDICATED ON PLAN 14725
AND PLAN 17876, SECTION 35, BLOCK 5 NORTH,
RANGE 2 WEST, NEW WESTMINSTER DISTRICT**

Pursuant to Section 120 of the Land Title Act
and Section 40 Community Charter

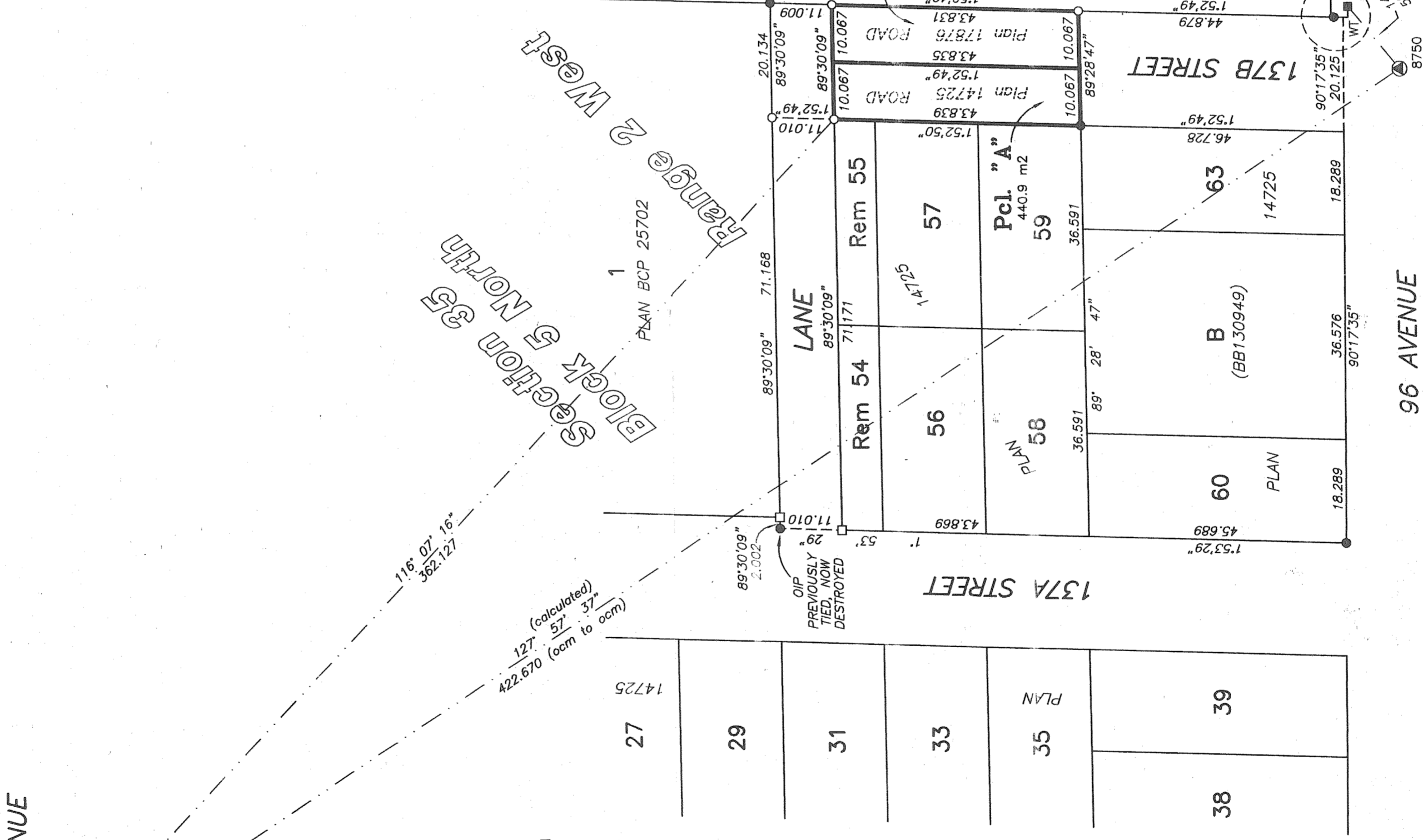
City of Surrey DCGS 92G.016



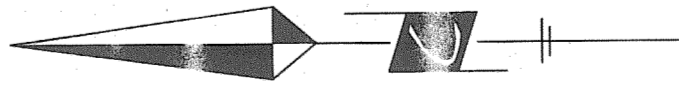
SCALE - 1 : 750

All distances are in metres

80H2095



- Legend:**
- Denotes control monument found
 - Denotes iron post found
 - Denotes lead plug found
 - Denotes iron post set
 - Denotes lead plug set
 - Denotes square metres
 - WT Denotes witness



Integrated Survey Area No. 1, Surrey, B.C.
Grid bearings are derived from observations
between Control Monuments 80H2095 & 8750
NAD 83 (CSRS).
This Plan shows ground level measured
distances. Prior to computation of U.T.M.
coordinates, multiply by combined factor
0.99959535

Parcel	Portion of Highway Dedication	Cancellation	Area
A	Portion of Road in Section 35, B5N, R2W, N.W.D. Dedicated by Plan 14725		440.9 m ²
B	Portion of Road in Section 35, B5N, R2W, N.W.D. Dedicated by Plan 17876		440.9 m ²

Cameron Land Surveying Ltd.
B.C. Land Surveyors
Unit 206 - 16055 Fraser Highway
Surrey, B.C. V4N 0G2
Phone: 604-597-3777
Fax: 604-597-3783

This plan lies within the Greater Vancouver Regional District

PLAN BCP

Deposited in the Land Title Office at
New Westminster, B.C. this _____ day
of _____, 2008.

Registrar

Ref. No. _____

City of Surrey

Mayor - Dianne Watts

City Clerk - Margaret Jones

Witness as to signature of the City Clerk

Address of Witness

Occupation of Witness

Approved under the Land Title Act
this _____ day of _____, 2008.

Approving Officer for the City of Surrey

I, Kenneth W. Schuurman, a British Columbia Land
Surveyor of Surrey, in British Columbia certify
that I was present at and personally supervised
the survey represented by this plan, and that the
survey and plan are correct. The field survey
was completed on the 5th day of June, 2008.
The plan was completed and checked, and the
checklist filed under #82237, on the 7th day
of June, 2008.

K. Schuurman
Kenneth W. Schuurman, B.C.L.S.

File: 4587-REF