

CITY OF SURREY

BY-LAW NO. 16613

A By-law to close and to remove the dedication
of a highway of a portion of road at 140 Street and Fraser Highway.

.....

WHEREAS pursuant to Subsection 40(1)(a) of the *Community Charter*, S.B.C. 2003, c. 26, the Council may, by by-law, close all or part of a highway that is vested in the municipality to all or some types of traffic;

AND WHEREAS pursuant to Section 40(2) of the *Community Charter*, S.B.C. 2003, c. 26, the Council may, by by-law, remove the dedication of a highway that has been closed by a by-law under Subsection 40(1)(a).

NOW THEREFORE the Council of the City of Surrey in open meeting assembled, ENACTS as follows:

1. That portion of road adjacent to Block G Section 36 Block 5 North Range 2 West New Westminster District, shown outlined in heavy outline on a Reference Plan attached hereto, and forming part of this by-law, duly signed by the Mayor and Clerk, prepared by Richard S. Fu, B.C.L.S. on the 3rd day of March, 2008, and more particularly described as follows:

That portion of road called Parcel "1" and containing 685.6 square metres,

(hereinafter referred to as that portion of Road)

shall be closed to traffic.

2. The dedication as highway be removed of said portion of road.
3. This By-law may be cited for all purposes as "Surrey Close and Remove the Dedication of Highway of a Portion of Road at 140 Street and Fraser Highway By-law, 2008, No. 16613".

READ A FIRST, SECOND AND THIRD TIME on the 31st day of March, 2008.

NOTICE OF INTENTION

ADVERTISED on the 4th day of April and 11th day of April, 2008, in the SURREY NOW newspaper.

RECONSIDERED AND FINALLY ADOPTED, signed by the Mayor and Clerk, and sealed with the Corporate Seal on the 14th day of April, 2008.

_____ MAYOR

_____ CLERK

h:\by-laws\adopted bylaws\2008\16613.doc

REFERENCE PLAN TO ACCOMPANY THE CITY OF SURREY
 ROAD CANCELLATION BY-LAW NO. 16613 OF PART OF
 ROAD ADJACENT TO BLOCK G SECTION 36 BLOCK 5 NORTH
 RANGE 2 WEST NEW WESTMINSTER DISTRICT

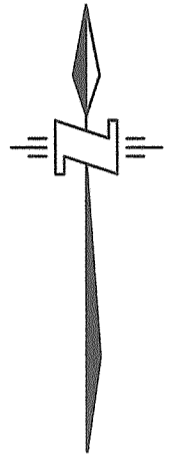
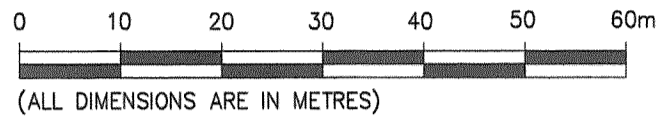
PLAN BCP

DEPOSITED IN THE LAND TITLE OFFICE
 AT NEW WESTMINSTER, B.C.
 THIS _____ DAY OF _____

PURSUANT TO SECTION 40 OF THE COMMUNITY CHARTER
 AND SECTION 120 OF THE LAND TITLE ACT.

CITY OF SURREY
 B.C.G.S. 92G.016

SCALE : 1: 750



INTEGRATED SURVEY AREA No. 1

THIS PLAN SHOWS GROUND LEVEL MEASURED DISTANCES
 PRIOR TO COMPUTATION OF U.T.M. CO-ORDINATES,
 MULTIPLY BY COMBINED FACTOR 0.9995970

LEGEND

GRID BEARINGS NAD 83 (CSRS) ARE
 DERIVED FROM CONTROL MONUMENTS
 No. 84H0560 AND 84H0561

BEARINGS TO BEARING TREES ARE MAGNETIC

SYMBOLS DESCRIPTION

- | | | | |
|-------|--------|----------------------|--|
| FOUND | PLACED | | |
| ⊙ | | CONTROL MONUMENT | |
| ⊗ | | STANDARD CAPPED POST | |
| ● | ○ | STANDARD IRON POST | |

CITY OF SURREY

MAYOR

CITY CLERK:

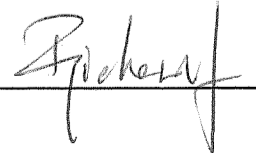
WITNESS
 (PRINT NAME CLEARLY NEAR SIGNATURE)

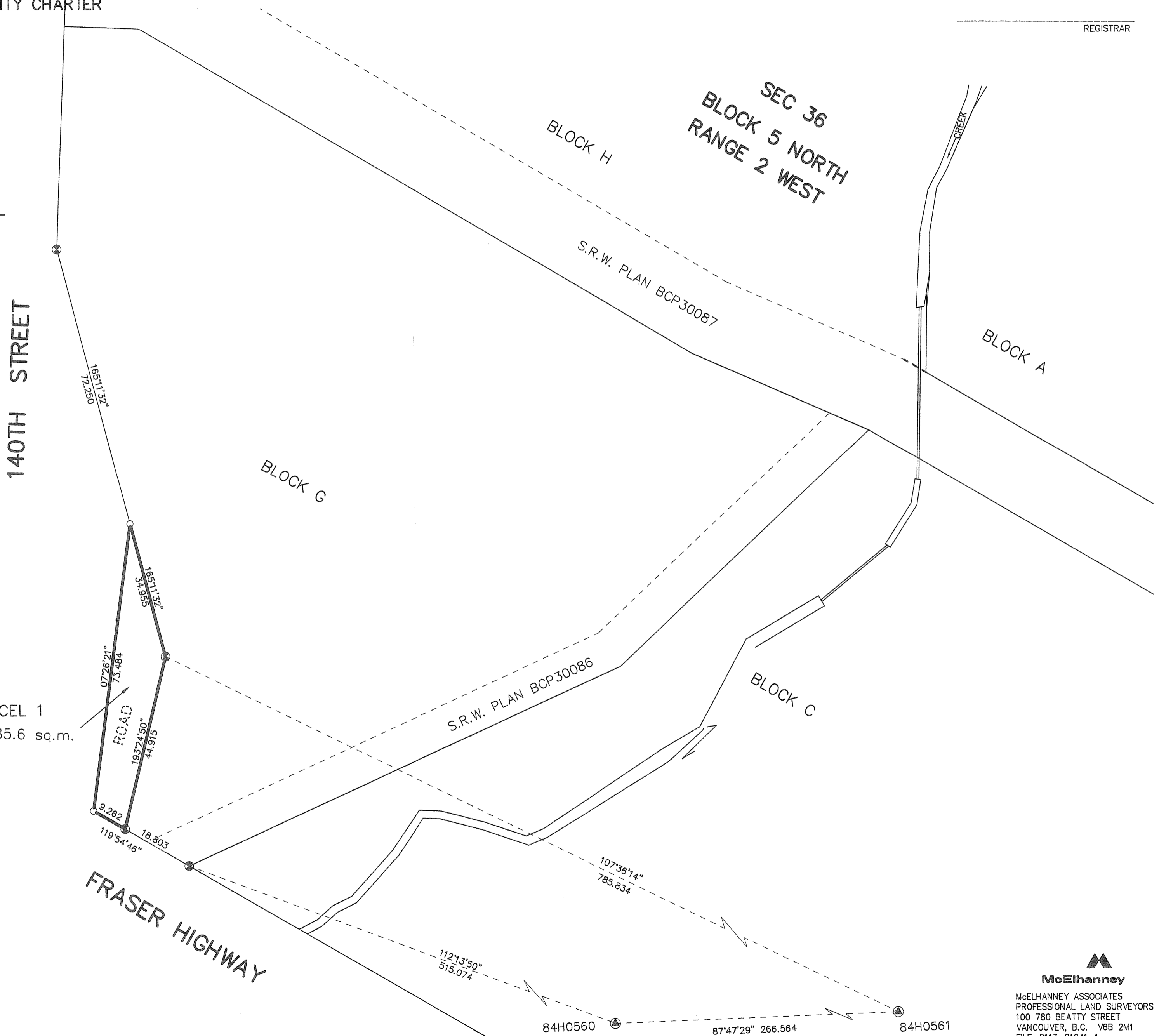
ADDRESS OF WITNESS

OCCUPATION OF WITNESS


PARCEL 1
 AREA = 685.6 sq.m.

I, RICHARD S. FU, A BRITISH COLUMBIA LAND SURVEYOR OF
 VANCOUVER IN BRITISH COLUMBIA, CERTIFY THAT I WAS
 PRESENT AT AND PERSONALLY SUPERINTENDED THE
 SURVEY REPRESENTED BY THIS PLAN AND THAT THE
 SURVEY AND PLAN ARE CORRECT. THE FIELD SURVEY WAS
 COMPLETED ON THE 2ND DAY OF NOVEMBER, 2007. THE
 PLAN WAS COMPLETED AND CHECKED, AND THE CHECKLIST
 FILED UNDER ECP#77863, ON THE 3RD DAY OF MARCH,
 2008.

 B.C.L.S.



THIS PLAN LIES WITHIN THE GREATER VANCOUVER REGIONAL DISTRICT


McElhanney
 McELHANNEY ASSOCIATES
 PROFESSIONAL LAND SURVEYORS
 100 780 BEATTY STREET
 VANCOUVER, B.C. V6B 2M1
 FILE 2113-01641-1
 DRAWING:1641-1 Block G RECONFIG.dwg