

CITY OF SURREY

BY-LAW NO. 16612

A By-law to close and to remove the dedication  
of a highway of a portion of 186 Street.

.....

WHEREAS pursuant to Subsection 40(1)(a) of the *Community Charter*, S.B.C. 2003, c. 26, the Council may, by by-law, close all or part of a highway that is vested in the municipality to all or some types of traffic;

AND WHEREAS pursuant to Section 40(2) of the *Community Charter*, S.B.C. 2003, c. 26, the Council may, by by-law, remove the dedication of a highway that has been closed by a by-law under Subsection 40(1)(a).

NOW THEREFORE the Council of the City of Surrey in open meeting assembled, ENACTS as follows:

1. That portion of road lying in Section 16 Township 8 New Westminster District, shown outlined in heavy outline on a Reference Plan attached hereto, and forming part of this by-law, duly signed by the Mayor and Clerk, prepared by D.S. Martens, B.C.L.S. on the 4th day of March, 2008, and more particularly described as follows:

That portion of road dedicated by Plan 16057, called Parcel "A"  
and containing 329.7 square metres,

(hereinafter referred to as that portion of 186 Street)

shall be closed to traffic.

2. The dedication as highway be removed of said portion of 186 Street.
3. This By-law may be cited for all purposes as "Surrey Close and Remove the Dedication of Highway of a Portion of 186 Street By-law, 2008, No. 16612".

READ A FIRST, SECOND AND THIRD TIME on the 31st day of March, 2008.

NOTICE OF INTENTION

ADVERTISED on the 4th day of April and 11th day of April, 2008, in the SURREY NOW newspaper.

RECONSIDERED AND FINALLY ADOPTED, signed by the Mayor and Clerk, and sealed with the Corporate Seal on the 14th day of April, 2008.

\_\_\_\_\_ MAYOR

\_\_\_\_\_ CLERK

h:\by-laws\adopted bylaws\2008\16612.doc

**REFERENCE PLAN OF PART OF ROAD IN SECTION 16 TOWNSHIP 8  
N. W. D. DEDICATED ON PLAN 16057 TO ACCOMPANY CITY OF SURREY  
HIGHWAY DEDICATION CANCELLATION BY-LAW NO. 16612**

**PLAN BCP**

Deposited in the Land Title Office  
at New Westminster, B. C.  
This \_\_\_ Day of \_\_\_\_\_, 2008.

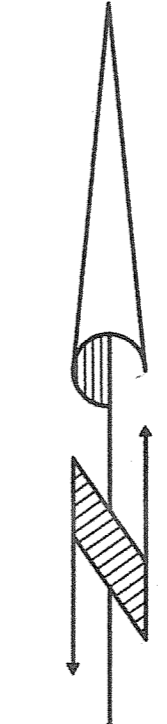
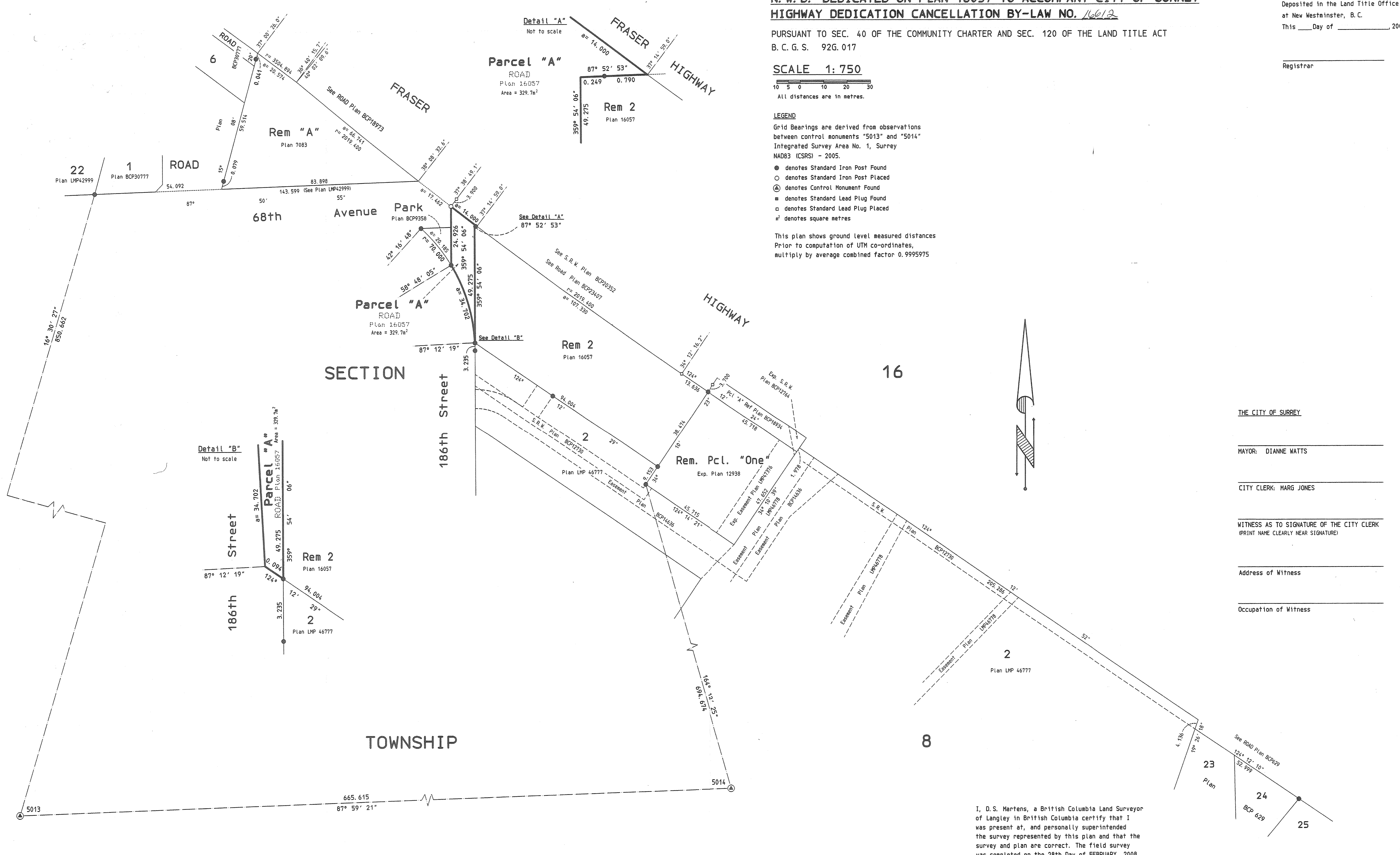
PURSUANT TO SEC. 40 OF THE COMMUNITY CHARTER AND SEC. 120 OF THE LAND TITLE ACT  
B. C. G. S. 926.017

**SCALE 1:750**  
10 5 0 10 20 30  
All distances are in metres.

**LEGEND**  
Grid Bearings are derived from observations  
between control monuments "5013" and "5014"  
Integrated Survey Area No. 1, Surrey  
NAD83 (CSRS) - 2005.

- denotes Standard Iron Post Found
- denotes Standard Iron Post Placed
- ⊙ denotes Control Monument Found
- denotes Standard Lead Plug Found
- denotes Standard Lead Plug Placed
- m<sup>2</sup> denotes square metres

This plan shows ground level measured distances  
Prior to computation of UTM co-ordinates,  
multiply by average combined factor 0.9995975



THE CITY OF SURREY

MAYOR: DIANNE MATTS

CITY CLERK: MARG JONES

WITNESS AS TO SIGNATURE OF THE CITY CLERK  
(PRINT NAME CLEARLY NEAR SIGNATURE)

Address of Witness

Occupation of Witness

I, D. S. Martens, a British Columbia Land Surveyor  
of Langley in British Columbia certify that I  
was present at, and personally superintended  
the survey represented by this plan and that the  
survey and plan are correct. The field survey  
was completed on the 28th Day of FEBRUARY, 2008.  
The plan was completed and checked, and the checklist  
filed under No. 77948, on the 4th day of MARCH, 2008.

*[Signature]*, B. C. L. S.

**D. S. Martens**  
B. C. Land Surveyor  
21457 78th Avenue  
Langley B. C. V2Y 2E9  
Fax/Phone 888-2665

07-01010101.DAT

This Plan Lies Within The Greater Vancouver Regional District - City of Surrey