

CITY OF SURREY

BY-LAW NO. 16582

A By-law to close and to remove the dedication  
of a highway of a portion of Road.

.....

WHEREAS pursuant to Subsection 40(1)(a) of the *Community Charter*, S.B.C. 2003, c. 26, the Council may, by by-law, close all or part of a highway that is vested in the municipality to all or some types of traffic;

AND WHEREAS pursuant to Section 40(2) of the *Community Charter*, S.B.C. 2003, c. 26, the Council may, by by-law, remove the dedication of a highway that has been closed by a by-law under Subsection 40(1)(a).

NOW THEREFORE the Council of the City of Surrey in open meeting assembled, ENACTS as follows:

1. That portion of road lying in Section 19 Township 2 New Westminster District, shown outlined in heavy black line on a Reference Plan attached hereto, and forming part of this by-law, duly signed by the Mayor and Clerk, prepared by Scott E. Netherton, B.C.L.S. on the 15th day of February, 2008, and more particularly described as follows:

That portion of road dedicated by Plan 16282, called Parcel "A"  
and containing 0.117 hectares,

(hereinafter referred to as that portion of Road)

shall be closed to traffic.

2. The dedication as highway be removed of said portion of Road.
3. This By-law may be cited for all purposes as "Surrey Close and Remove the Dedication of Highway of a Portion of Road at 74 Avenue and 128 Street By-law, 2008, No. 16582".

READ A FIRST, SECOND AND THIRD TIME on the 25th day of February, 2008.

NOTICE OF INTENTION

ADVERTISED on the 29th day of February and the 7th day of March, 2008, in the SURREY NOW newspaper.

RECONSIDERED AND FINALLY ADOPTED, signed by the Mayor and Clerk, and sealed with the Corporate Seal on the 10th day of March, 2008.

\_\_\_\_\_ MAYOR

\_\_\_\_\_ CLERK

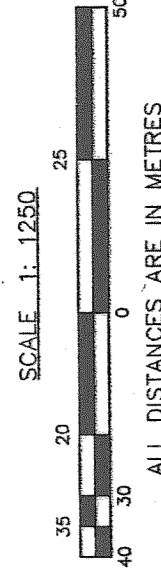
h:\by-laws\adopted bylaws\2008\16582.doc

**REFERENCE PLAN TO ACCOMPANY CITY OF SURREY HIGHWAY DEDICATION CANCELLATION BYLAW No. 16582 OF ROAD LYING IN SEC. 19 TP. 2 N.W.D. DEDICATED BY PLAN 16282 B.C.G.S. 92G.016.**

PURSUANT TO SECTION 120, LAND TITLE ACT  
PURSUANT TO SECTION 40, COMMUNITY CHARTER

**LEGEND**

- DENOTES CONTROL MONUMENT FOUND
- DENOTES STANDARD IRON POST FOUND



**INTEGRATED SURVEY AREA NO. 1, SURREY, NAD83 (CSRS)**

GRID BEARINGS ARE DERIVED FROM OBSERVATIONS BETWEEN GEODETIC CONTROL MONUMENTS 5844 AND 81H4521.

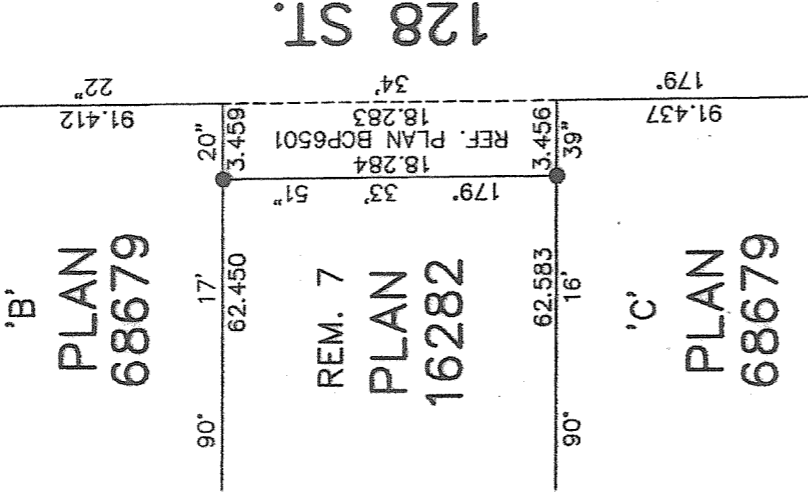
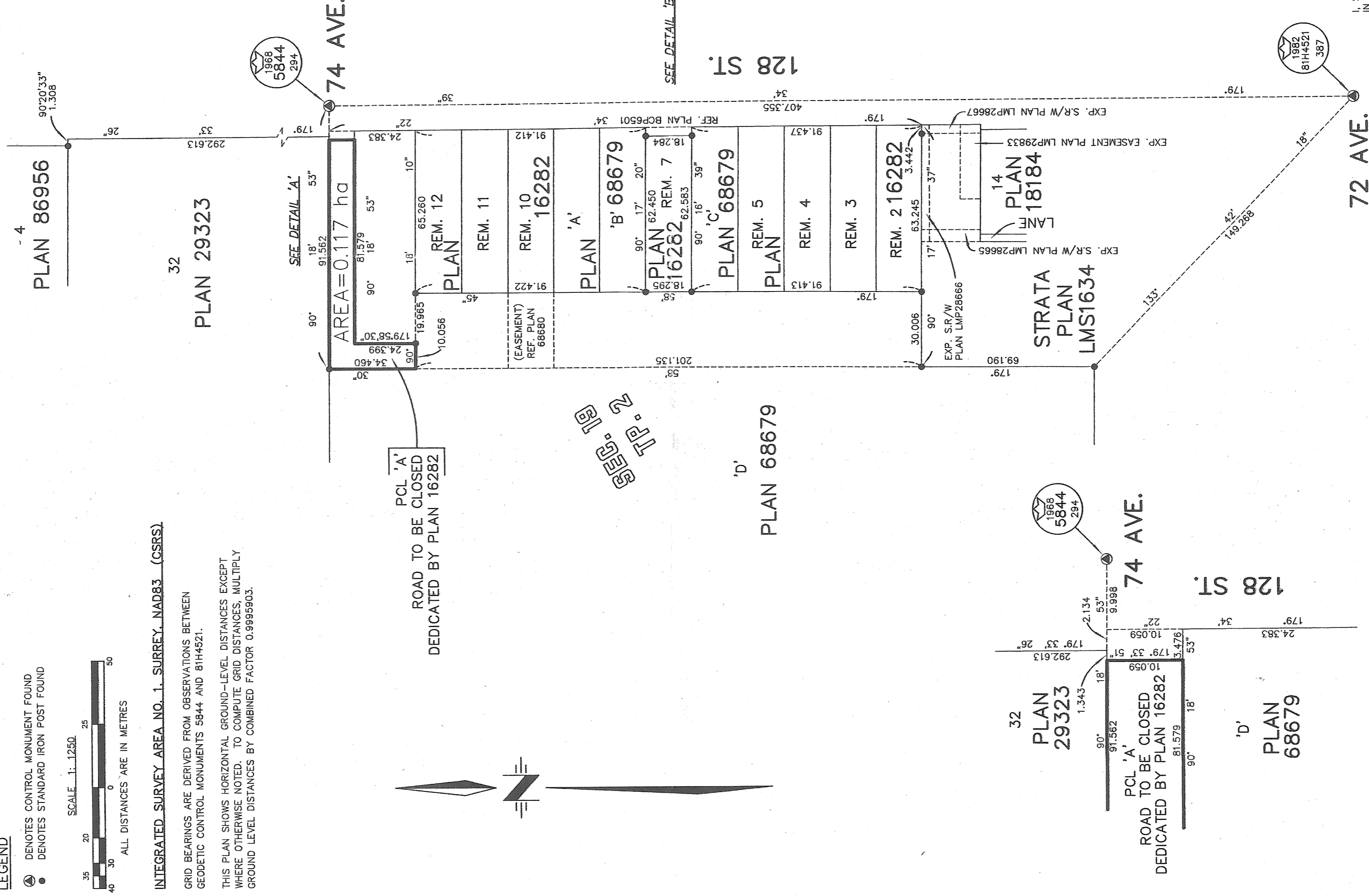
THIS PLAN SHOWS HORIZONTAL GROUND-LEVEL DISTANCES EXCEPT WHERE OTHERWISE NOTED. TO COMPUTE GRID DISTANCES, MULTIPLY GROUND LEVEL DISTANCES BY COMBINED FACTOR 0.9995903.

**PLAN BCP**

DEPOSITED IN THE LAND TITLE OFFICE  
AT NEW WESTMINSTER, B.C.

2008.

REGISTRAR



DETAIL 'B'  
NOT TO SCALE

CITY OF SURREY

MAYOR; DIANNE L. WAITS

CITY CLERK;

WITNESS AS TO THE SIGNATURE OF THE CITY CLERK

ADDRESS OF WITNESS

OCCUPATION OF WITNESS

THIS PLAN LIES WITHIN THE GREATER  
VANCOUVER REGIONAL DISTRICT

I, SCOTT E. NETHERTON, A BRITISH COLUMBIA LAND SURVEYOR, OF SURREY, IN BRITISH COLUMBIA, CERTIFY THAT I WAS PRESENT AT AND PERSONALLY SUPERINTENDED THE SURVEY REPRESENTED BY THIS PLAN, AND THAT THE SURVEY AND PLAN ARE CORRECT. THE FIELD SURVEY WAS COMPLETED ON THE 13<sup>TH</sup> DAY OF FEBRUARY, 2008. THE PLAN WAS COMPLETED AND CHECKED, AND THE CHECKLIST FILED UNDER ECP# 17250 ON THE 15<sup>TH</sup> DAY OF FEBRUARY, 2008.

*S.E. Netherton*

B.C.L.S.

CITY OF SURREY  
SURVEY SECTION  
14245 - 56 AVE.  
SURREY, B.C. V3Y 3A2  
TEL: (604) 591-4253  
FAX: (604) 591-8693