

CITY OF SURREY

BY-LAW NO. 16581

A By-law to close and to remove the dedication
of a highway of a portion of Lane.

.....

WHEREAS pursuant to Subsection 40(1)(a) of the *Community Charter*, S.B.C. 2003, c. 26, the Council may, by by-law, close all or part of a highway that is vested in the municipality to all or some types of traffic;

AND WHEREAS pursuant to Section 40(2) of the *Community Charter*, S.B.C. 2003, c. 26, the Council may, by by-law, remove the dedication of a highway that has been closed by a by-law under Subsection 40(1)(a).

NOW THEREFORE the Council of the City of Surrey in open meeting assembled, ENACTS as follows:

1. That portion of road lying in Block "B" Section 27 Block 5 North Range 2 West New Westminster District, shown outlined in heavy black line on a Reference Plan attached hereto, and forming part of this by-law, duly signed by the Mayor and Clerk, prepared by H. David Liddle, B.C.L.S. on the 12th day of February, 2008, and more particularly described as follows:

That portion of road dedicated by Plan 1726, called Parcel "A" and containing 477.9 square metres,

(hereinafter referred to as that portion of Lane)

shall be closed to traffic.

2. The dedication as highway be removed of said portion of Lane.
3. This By-law may be cited for all purposes as "Surrey Close and Remove the Dedication of Highway of a Portion of Lane at 103 Avenue and West Whalley Ring Road (134A Street) By-law, 2008, No. 16581".

READ A FIRST, SECOND AND THIRD TIME on the 25th day of February, 2008.

NOTICE OF INTENTION

ADVERTISED on the 29th day of February and the 7th day of March, 2008, in the SURREY NOW newspaper.

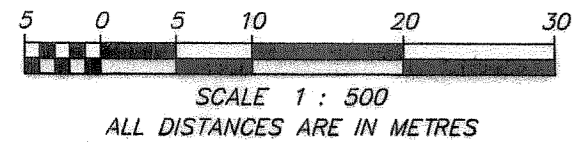
RECONSIDERED AND FINALLY ADOPTED, signed by the Mayor and Clerk, and sealed with the Corporate Seal on the 10th day of March, 2008.

_____ MAYOR

_____ CLERK

h:\by-laws\adopted bylaws\2008\16581.doc

REFERENCE PLAN TO ACCOMPANY
 CITY OF SURREY HIGHWAY DEDICATION CANCELLATION BYLAW 16581
 OF A PORTION OF
 BLOCK "B", SECTION 27, BLOCK 5 NORTH, RANGE 2 WEST,
 NEW WESTMINSTER DISTRICT
 SHOWN ROAD ON PLAN 1726
 B.C.G.S. 92G.016



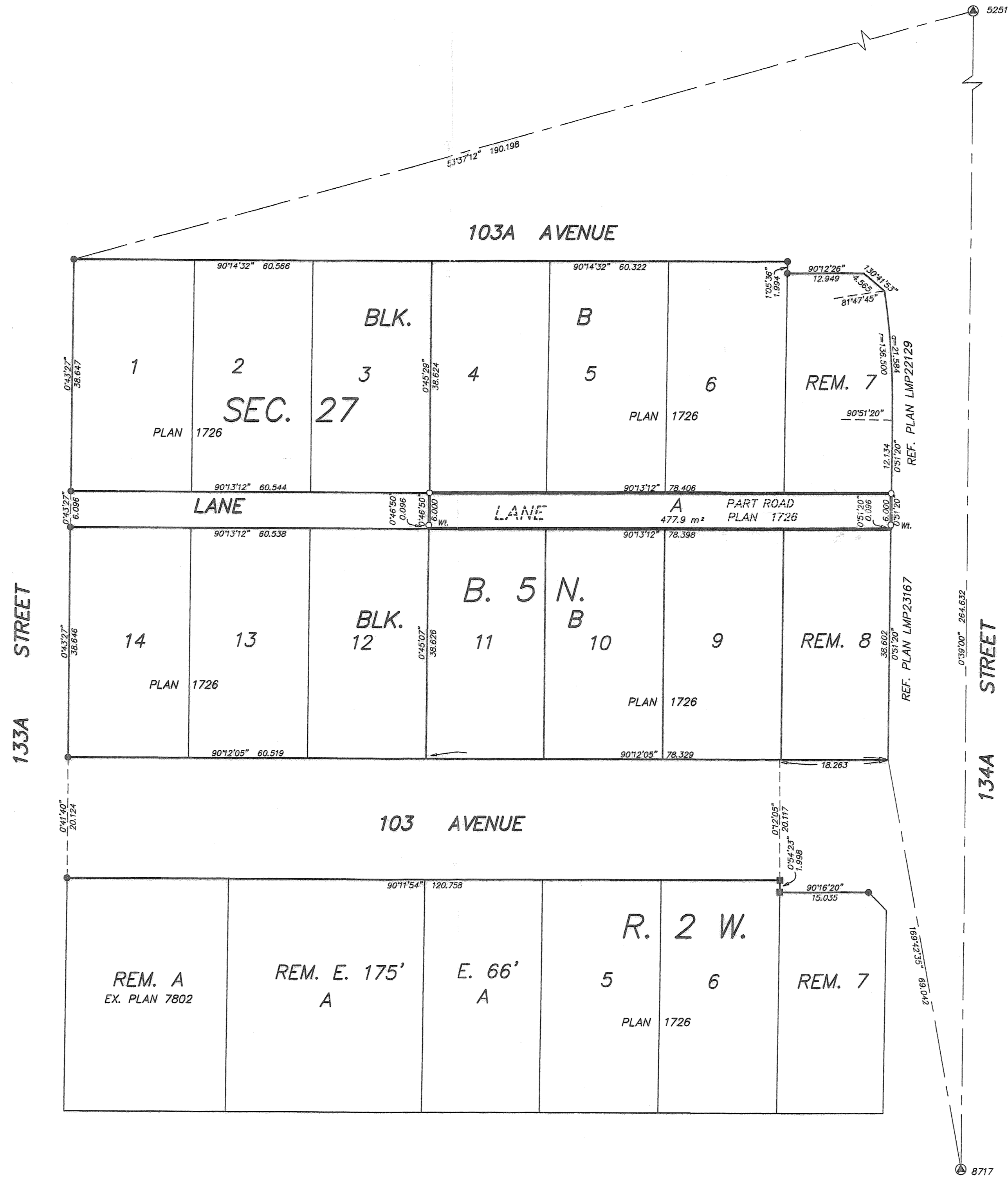
PURSUANT TO SECTION 120, LAND TITLE ACT
 AND SECTION 40 OF THE COMMUNITY CHARTER

PLAN BCP

DEPOSITED IN THE LAND TITLE OFFICE
 AT NEW WESTMINSTER, B.C.
 THIS DAY OF _____, 2008

REGISTRAR

REF:



OWNER: CITY OF SURREY

MAYOR: DIANNE WATTS

CITY CLERK: MARGARET JONES

WITNESS AS TO SIGNATURE OF THE CITY CLERK

ADDRESS OF WITNESS

OCCUPATION OF WITNESS

LEGEND:

- ⊙ INDICATES CONTROL MONUMENT FOUND
- INDICATES LEAD PLUG FOUND
- INDICATES STANDARD IRON POST FOUND
- INDICATES LEAD PLUG PLACED
- INDICATES STANDARD IRON POST PLACED
- W. INDICATES WITNESS

INTEGRATED SURVEY AREA No.1, CITY OF SURREY, NAD83 (CSRS)

GRID BEARINGS ARE DERIVED FROM OBSERVATIONS BETWEEN
 GEODETIC CONTROL MONUMENTS 5251 AND 8717.

THIS PLAN SHOWS HORIZONTAL GROUND-LEVEL DISTANCES
 EXCEPT WHERE OTHERWISE NOTED. TO COMPUTE GRID DISTANCES,
 MULTIPLY GROUND-LEVEL DISTANCES BY COMBINED FACTOR 0.9995913.

MURRAY & ASSOCIATES
 201-12448 82nd AVENUE
 SURREY, B.C.
 V3W 3F9
 (604) 597-9189

THIS PLAN LIES WITHIN THE GREATER VANCOUVER REGIONAL DISTRICT
 (CITY OF SURREY)

I, H. DAVID LIDDLE, A BRITISH COLUMBIA LAND SURVEYOR
 OF ABBOTSFORD, IN BRITISH COLUMBIA, CERTIFY THAT
 I WAS PRESENT AT AND PERSONALLY SUPERINTENDED THE
 SURVEY REPRESENTED BY THIS PLAN, AND THAT THE SURVEY
 AND PLAN ARE CORRECT.

THE FIELD SURVEY WAS COMPLETED ON THE
 8th DAY OF FEBRUARY, 2008.
 THE PLAN WAS COMPLETED AND CHECKED, AND THE
 CHECKLIST FILED UNDER ECP# 77060
 ON THE 12th DAY OF FEBRUARY, 2008.

H. David Liddle
 B. C. L. S.
 FILE 9310-3