

CITY OF SURREY

BY-LAW NO. 16495

A By-law to close and to remove the dedication
of a highway of portions of 194 Street
.....

WHEREAS pursuant to Subsection 40(1)(a) of the *Community Charter*, S.B.C. 2003, c. 26, the Council may, by by-law, close all or part of a highway that is vested in the municipality to all or some types of traffic;

AND WHEREAS pursuant to Section 40(2) of the *Community Charter*, S.B.C. 2003, c. 26, the Council may, by by-law, remove the dedication of a highway that has been closed by a by-law under Subsection 40(1)(a).

NOW THEREFORE the Council of the City of Surrey in open meeting assembled, ENACTS as follows:

1. Those portions of road lying in Section 22, Township 8, New Westminster District, shown outlined in heavy black line on a Reference Plan attached hereto, and forming part of this by-law, duly signed by the Mayor and Clerk, prepared by Paul Bartlett, B.C.L.S. on the 29th day of October, 2007, and more particularly described as follows:

That portion of the road dedicated on Plan 2600, called Parcel A and containing 23.9 square metres,

That portion of the road dedicated on Plan 2600, called Parcel B and containing 24.5 square metres,

(hereinafter referred to as those portions of 194 Street)

shall be closed to traffic.

2. The dedication as highway be removed of said portions of 194 Street.
3. This By-law may be cited for all purposes as "Surrey Close and Remove the Dedication of Highway of Portions of 72 Avenue and 194 Street Bylaw, 2007, No. 16495".

READ A FIRST, SECOND AND THIRD TIME on the 3rd day of December, 2007.

NOTICE OF INTENTION

ADVERTISED on the 7th and 14th day of December 2007, in the SURREY NOW newspaper.

RECONSIDERED AND FINALLY ADOPTED, signed by the Mayor and Clerk, and sealed with the Corporate Seal on the 17th day of December, 2007.

_____ MAYOR

_____ CLERK

REFERENCE PLAN OF PARTS OF ROAD IN SECTION 22 TOWNSHIP 8
 NWD DEDICATED ON PLAN 2600 TO ACCOMPANY CITY OF SURREY
 HIGHWAY DEDICATION CANCELLATION BY-LAW NO. 16495

PLAN BCP

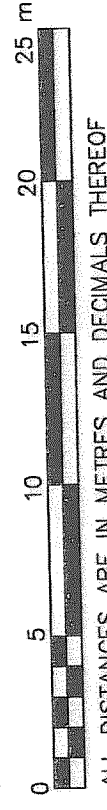
DEPOSITED IN THE LAND TITLE OFFICE
 AT NEW WESTMINSTER, B.C.
 THIS --- DAY OF ---

PURSUANT TO SEC. 40 OF THE COMMUNITY CHARTER AND SEC. 120 OF THE LAND TITLE ACT

REGISTRAR

B.C.G.S. 92G.017

SCALE 1 : 250



ALL DISTANCES ARE IN METRES AND DECIMALS THEREOF

INTEGRATED SURVEY AREA No. 1. (MUNICIPALITY OF SURREY), NAD83 (CSRS)

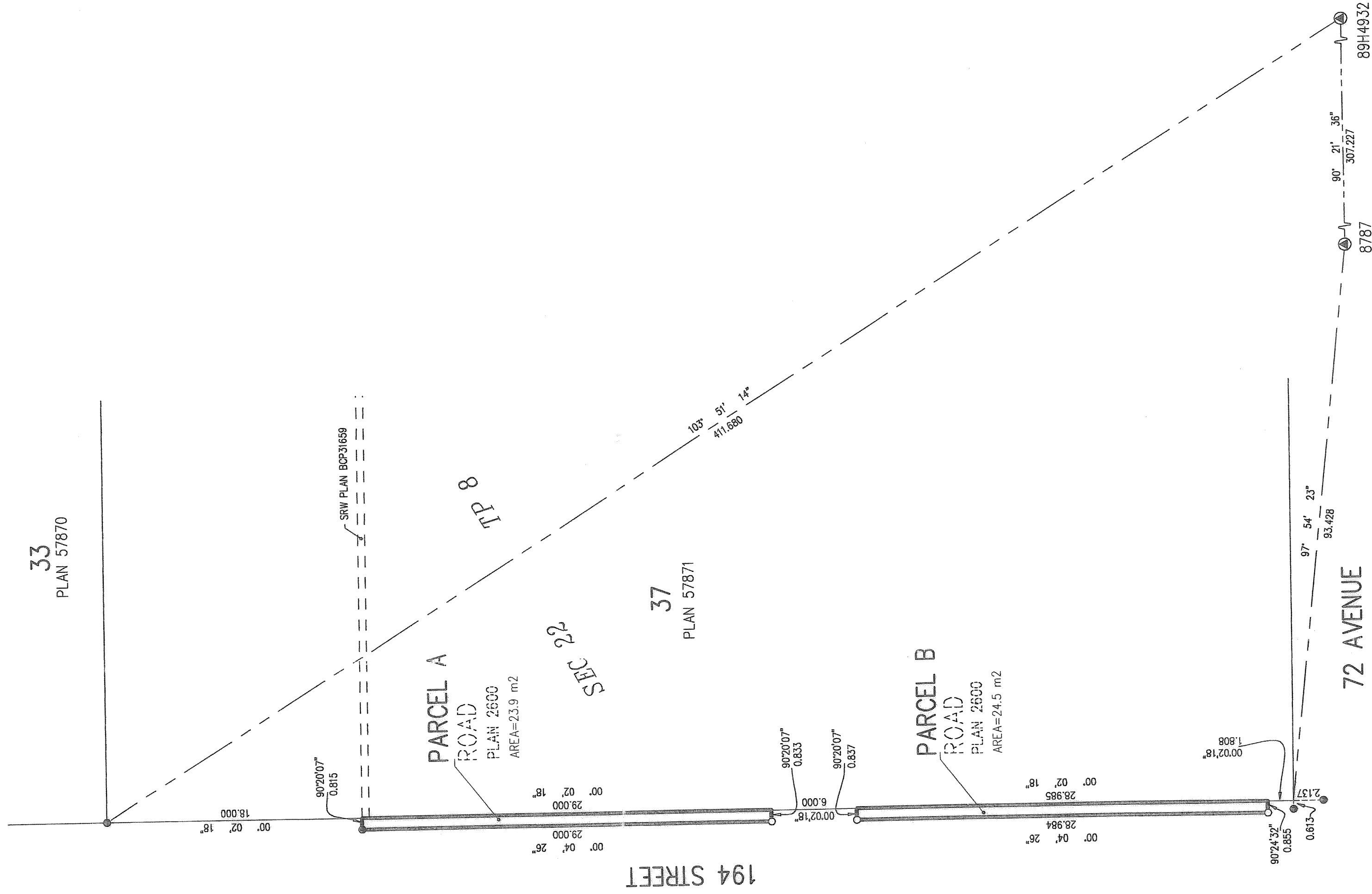
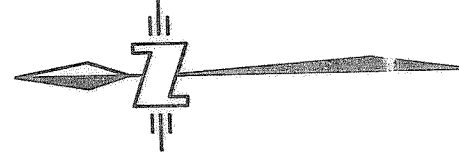
THIS PLAN SHOWS HORIZONTAL GROUND-LEVEL DISTANCES EXCEPT WHERE OTHERWISE NOTED. TO COMPUTE GRID DISTANCES, MULTIPLY GROUND-LEVEL DISTANCES BY COMBINED FACTOR 0.9995966

GRID BEARINGS ARE DERIVED FROM OBSERVATIONS BETWEEN CONTROL MONUMENTS 8787 AND 89H4932

LEGEND

SYMBOLS DESCRIPTION

- FOUND PLACED
- ⊙ CONTROL MONUMENT
 - STANDARD IRON POST
 - LEAD PLUG



THE CITY OF SURREY

MAYOR: DIANNE WATTS

CITY CLERK: MARG JONES

WITNESS AS TO SIGNATURE OF THE CITY CLERK
 (PRINT NAME CLEARLY NEAR SIGNATURE)

ADDRESS OF WITNESS

OCCUPATION OF WITNESS

I, PAUL BARTLETT, A BRITISH COLUMBIA LAND SURVEYOR OF SURREY, IN BRITISH COLUMBIA, CERTIFY THAT I WAS PRESENT AT AND PERSONALLY SUPERINTENDED THE SURVEY REPRESENTED BY THIS PLAN, AND THAT THE SURVEY AND PLAN ARE CORRECT. THE FIELD SURVEY WAS COMPLETED ON THE 29TH DAY OF OCTOBER, 2007. THE PLAN WAS COMPLETED AND CHECKED, AND THE CHECKLIST FILED UNDER ECP#72,449, ON THE 29TH DAY OF OCTOBER, 2007.

Paul Bartlett

B.C.L.S.

THIS PLAN LIES WITHIN THE GREATER VANCOUVER REGIONAL DISTRICT -- CITY OF SURREY

McELHANNAY ASSOCIATES
 LAND SURVEYING LTD.
 13160 88th AVENUE
 SURREY, BC V3W 3K3
 TEL: 604-596-0391
 FILE: 2112-62367-04