

CITY OF SURREY

BY-LAW NO. 16398

A By-law to close and to remove the dedication
of a highway of a portion of King George Highway.

.....

WHEREAS pursuant to Subsection 40(1)(a) of the *Community Charter*, S.B.C. 2003, c. 26, the Council may, by by-law, close all or part of a highway that is vested in the municipality to all or some types of traffic;

AND WHEREAS pursuant to Section 40(2) of the *Community Charter*, S.B.C. 2003, c. 26, the Council may, by by-law, remove the dedication of a highway that has been closed by a by-law under Subsection 40(1)(a).

NOW THEREFORE the Council of the City of Surrey in open meeting assembled, ENACTS as follows:

1. That portion of road lying in Section 22, Township 1, New Westminster District shown outlined in heavy black line on a Reference Plan attached hereto, and forming part of this by-law, duly signed by the Mayor and Clerk, prepared by Matthew C. Onderwater, B.C.L.S. on the 9th day of May, 2007, and more particularly described as follows:

That portion of road dedicated on Plan 5388, called Parcel A and containing 371.4 square metres

(hereinafter referred to as that portion of King George Highway)

shall be closed to traffic.

2. The dedication as highway be removed of said portion of King George Highway.
3. This By-law may be cited for all purposes as "Surrey Close and Remove the Dedication of Highway of a portion of King George Highway By-law, 2007, No. 16398".

READ A FIRST, SECOND AND THIRD TIME on the 28th day of May, 2007.

NOTICE OF INTENTION

ADVERTISED on the 1st and 8th day of June 2007, in the SURREY NOW newspaper.

RECONSIDERED AND FINALLY ADOPTED, signed by the Mayor and Clerk, and sealed with the Corporate Seal on the 11th day of June, 2007.

_____ MAYOR

_____ CLERK

**REFERENCE PLAN TO ACCOMPANY CITY OF SURREY
HIGHWAY DEDICATION CANCELLATION BYLAW NO. 16398,
OF PART OF ROAD DEDICATED BY PLAN 5388,
SECTION 22, TOWNSHIP 1,
NEW WESTMINSTER DISTRICT.**

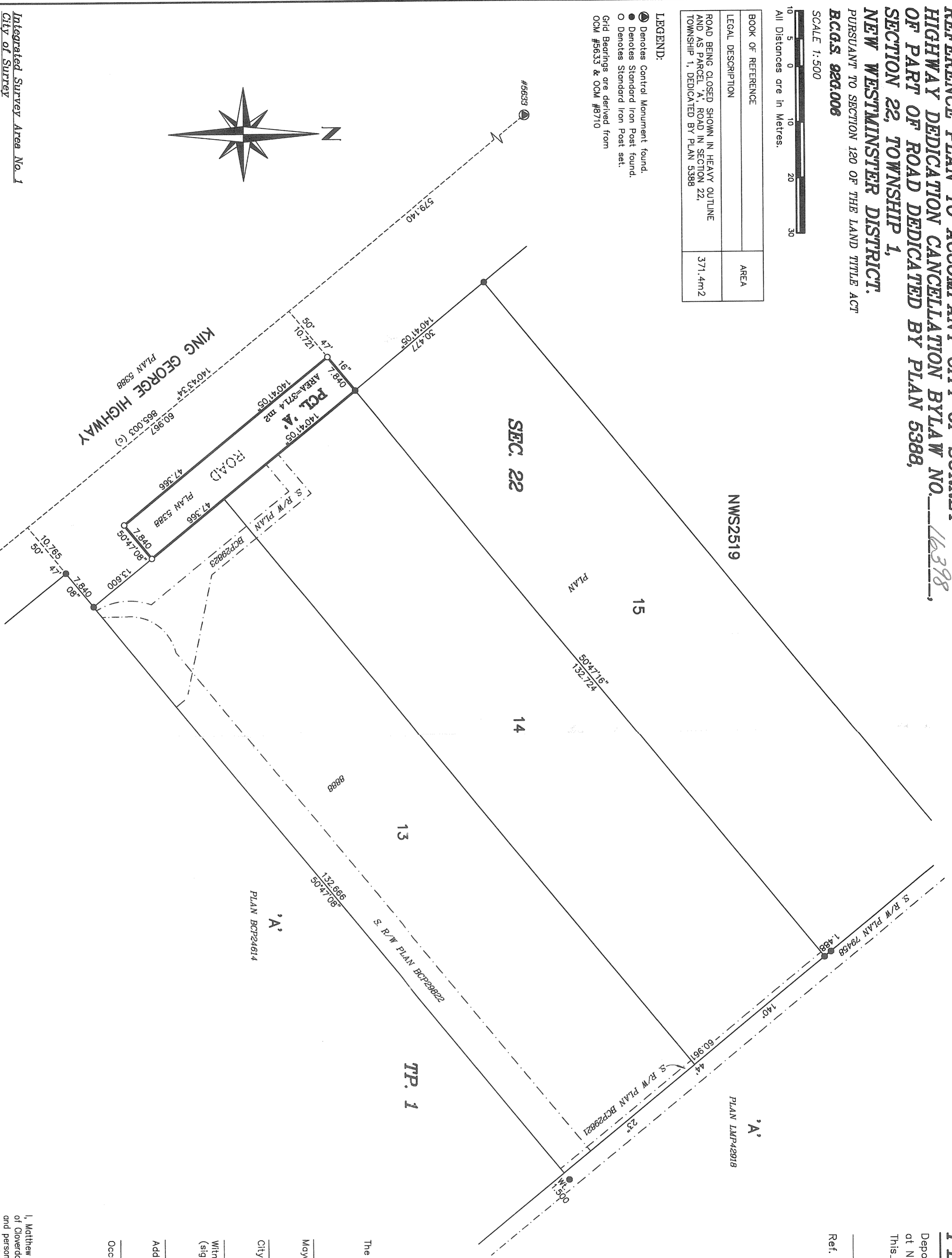
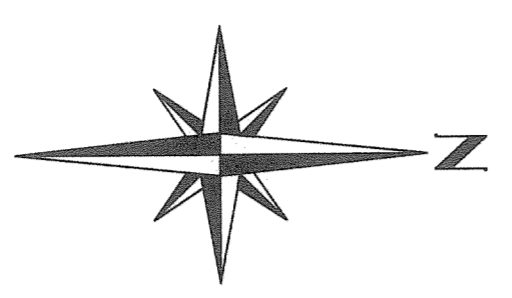
PURSUANT TO SECTION 120 OF THE LAND TITLE ACT
B.C.G.S. 92G.006

SCALE 1:500



BOOK OF REFERENCE	AREA
LEGAL DESCRIPTION	
ROAD BEING CLOSED SHOWN IN HEAVY OUTLINE AND AS PARCEL 'A', ROAD IN SECTION 22, TOWNSHIP 1, DEDICATED BY PLAN 5388	371.4m ²

LEGEND:
 ● Denotes Control Monument found.
 ○ Denotes Standard Iron Post found.
 ○ Denotes Standard Iron Post set.
 Grid Bearings are derived from OCM #5633 & OCM #8710



**Integrated Survey Area No. 1
City of Surrey**
 This plan shows horizontal ground level measured distances, prior to computation of U.T.M. coordinates multiply by combined factor of 0.9999971 NAD83 (CSRS)
 Underwater Land Surveying Ltd.
 B.C. Land Surveyors
 #104 - 6880 176 'A' Street
 Cloverdale, B.C.
 FILE: JS0706RCL

This Plan Lies Within The
Greater Vancouver Regional District

PLAN BCP

Deposited in the Land Title Office
at New Westminster B.C. on
This _____ Day of _____, 2007.

Ref. No. _____ Registrar

The City of Surrey

Mayor: Diane Watts _____
 City Clerk _____
 Witness as to Signatures (sign and print name clearly) _____
 Address of Witness _____
 Occupation of Witness _____

I, Matthew C. Underwater, a British Columbia Land Surveyor, of Cloverdale in British Columbia, certify that I was present at and personally superintended the survey represented by this plan, and that the survey and plan are correct. The field survey was completed on the 8th day of May, 2007. The plan was completed and checked, and the checklist filed under #64278, on the 9th day of May, 2007.

M. Underwater
 B.C.L.S.