

CITY OF SURREY

BY-LAW NO. 16392

A By-law to close and to remove the dedication
of a highway of portions of Cul-de-sac located at 59 Avenue and 15100 Block
.....

WHEREAS pursuant to Subsection 40(1)(a) of the *Community Charter*, S.B.C. 2003, c. 26, the Council may, by by-law, close all or part of a highway that is vested in the municipality to all or some types of traffic;

AND WHEREAS pursuant to Section 40(2) of the *Community Charter*, S.B.C. 2003, c. 26, the Council may, by by-law, remove the dedication of a highway that has been closed by a by-law under Subsection 40(1)(a).

NOW THEREFORE the Council of the City of Surrey in open meeting assembled, ENACTS as follows:

1. Those portions of road lying in Section 10, Township 2, New Westminster District, shown outlined in heavy black line on a Reference Plan attached hereto, and forming part of this by-law, duly signed by the Mayor and Clerk, prepared by G.A. Hol, B.C.L.S. on the 1st day of May, 2007, and more particularly described as follows:

That portion of the road dedicated on Plan 49544, called Parcel A and containing 14.0 square metres,

That portion of the road dedicated on Plan 49544, called Parcel B and containing 477.8 square metres,

(hereinafter referred to as those portions of road)

shall be closed to traffic.

2. The dedication as highway be removed of said portions of road.
3. This By-law may be cited for all purposes as "Surrey Close and Remove the Dedication of Highway of Portions of a Cul-de-sac located at 59 Avenue and 15100 Block Bylaw, 2007, No. 16392".

READ A FIRST, SECOND AND THIRD TIME on the 14th day of May, 2007.

NOTICE OF INTENTION

ADVERTISED on the 1st and 8th day of June 2007, in the SURREY NOW newspaper.

RECONSIDERED AND FINALLY ADOPTED, signed by the Mayor and Clerk, and sealed with the Corporate Seal on the 11th day of June, 2007.

_____ MAYOR

_____ CLERK

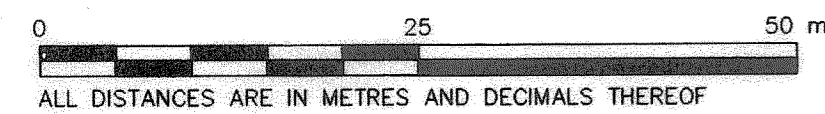
h:\by-laws\adopted bylaws\2007\16392.doc

REFERENCE PLAN OF PARTS OF ROAD IN SECTION 10 TOWNSHIP 2 NWD
 DEDICATED ON PLAN 49544 TO ACCOMPANY CITY OF SURREY HIGHWAY
 DEDICATION CANCELLATION BY-LAW NO. 16392

PLAN BCP

DEPOSITED IN THE LAND TITLE OFFICE
 AT NEW WESTMINSTER, B.C.
 THIS ... DAY OF ...

PURSUANT TO SEC. 140 OF THE COMMUNITY CHARTER AND SEC. 120 OF THE LAND TITLE ACT
 B.C.G.S. 92G.016
 SCALE 1 : 500



ALL DISTANCES ARE IN METRES AND DECIMALS THEREOF

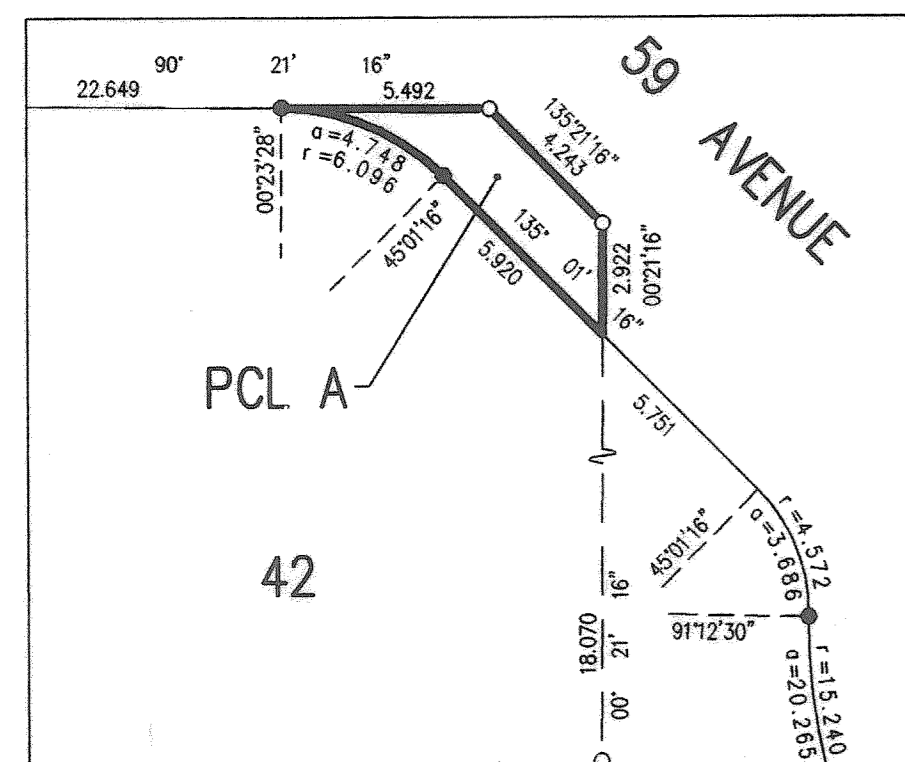
INTEGRATED SURVEY AREA No. 1. (MUNICIPALITY OF SURREY), NAD83 (CSRS)

THIS PLAN SHOWS HORIZONTAL GROUND-LEVEL DISTANCES EXCEPT
 WHERE OTHERWISE NOTED. TO COMPUTE GRID DISTANCES,
 MULTIPLY GROUND-LEVEL DISTANCES BY COMBINED FACTOR 0.9995987

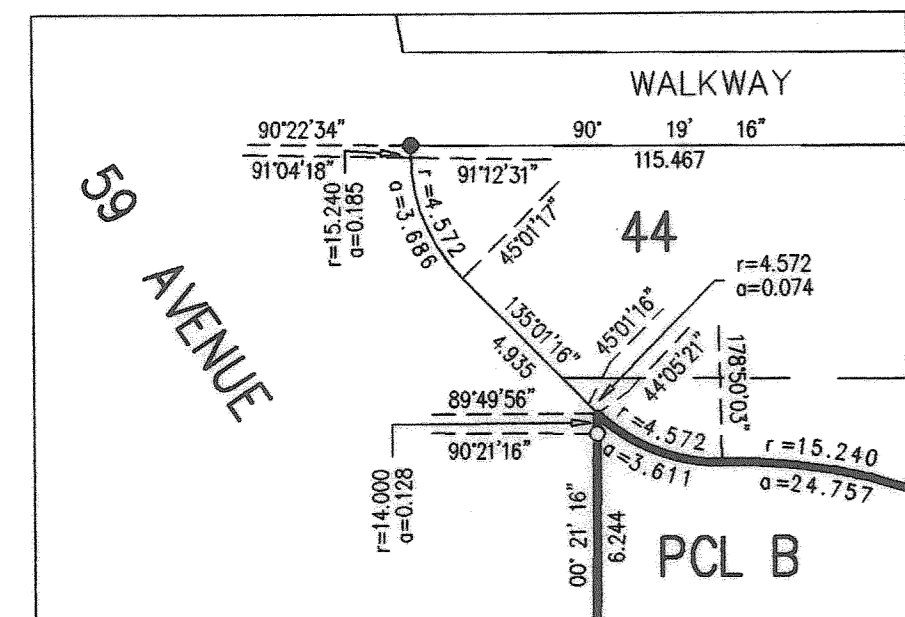
GRID BEARINGS ARE DERIVED FROM OBSERVATIONS
 BETWEEN CONTROL MONUMENTS 5606 AND 5607

LEGEND

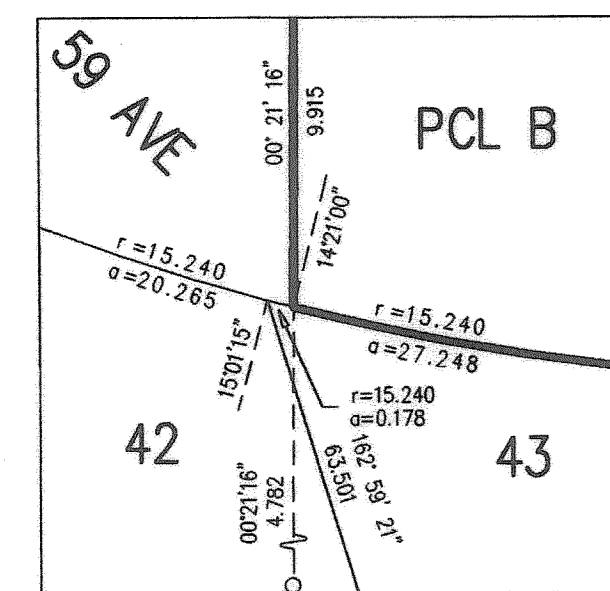
SYMBOLS	DESCRIPTION
FOUND	PLACED
⊙	CONTROL MONUMENT
●	STANDARD IRON POST



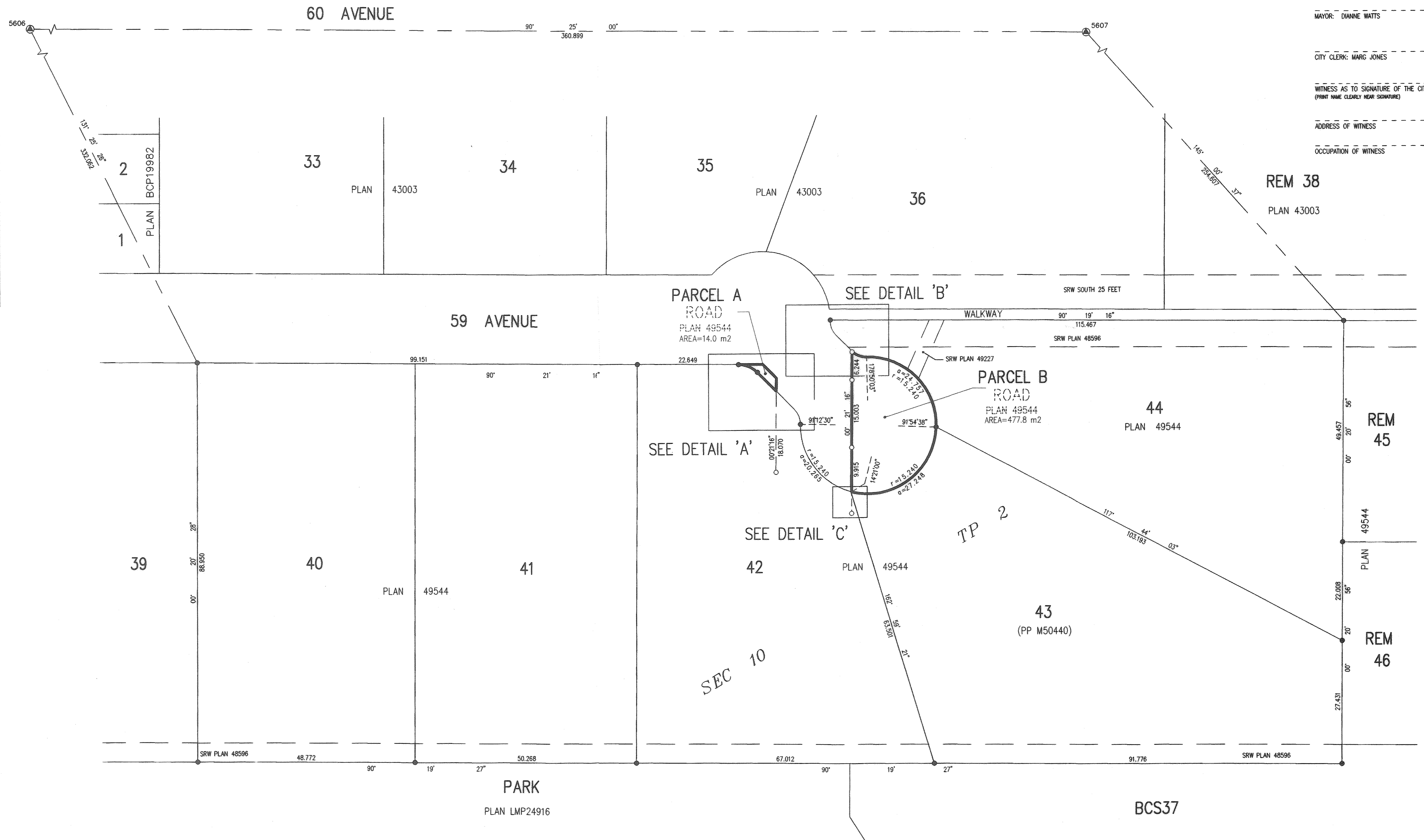
DETAIL 'A'
SCALE 1:200



DETAIL 'B'
SCALE 1:200



DETAIL 'C'
SCALE 1:50



THE CITY OF SURREY

MAYOR: DIANNE WATTS

CITY CLERK: MARG JONES

WITNESS AS TO SIGNATURE OF THE CITY CLERK
 (PRINT NAME CLEARLY NEAR SIGNATURE)

ADDRESS OF WITNESS

OCCUPATION OF WITNESS

I, G.A. HOL, A BRITISH COLUMBIA LAND SURVEYOR OF
 SURREY, IN BRITISH COLUMBIA, CERTIFY THAT I WAS
 PRESENT AT AND PERSONALLY SUPERINTENDED THE SURVEY
 REPRESENTED BY THIS PLAN, AND THAT THE SURVEY AND
 PLAN ARE CORRECT. THE FIELD SURVEY WAS COMPLETED
 ON THE 1st DAY OF MAY, 2007.
 THE PLAN WAS COMPLETED AND CHECKED, AND THE
 CHECKLIST FILED UNDER EDP#63837, ON THE 1st DAY OF
 MAY, 2007.

GAH

B.C.L.S.

THIS PLAN LIES WITHIN THE GREATER VANCOUVER REGIONAL DISTRICT - CITY OF SURREY

McELHANNEY ASSOCIATES
 LAND SURVEYING LTD.
 13180 88th AVENUE
 SURREY, BC V3W 3K3
 TEL: 604-596-0391
 FILE: 2112-07329-04