

CITY OF SURREY

BY-LAW NO. 16387

A By-law to close and to remove the dedication
of a highway of a portion of 87 Avenue.

.....

WHEREAS pursuant to Subsection 40(1)(a) of the *Community Charter*, S.B.C. 2003, c. 26, the Council may, by by-law, close all or part of a highway that is vested in the municipality to all or some types of traffic;

AND WHEREAS pursuant to Section 40(2) of the *Community Charter*, S.B.C. 2003, c. 26, the Council may, by by-law, remove the dedication of a highway that has been closed by a by-law under Subsection 40(1)(a).

NOW THEREFORE the Council of the City of Surrey in open meeting assembled, ENACTS as follows:

1. That portion of road lying in Section 29 Township 2 New Westminster District, shown outlined in heavy black line on a Reference Plan attached hereto, and forming part of this by-law, duly signed by the Mayor and Clerk, prepared by Gene Paul Nikula, B.C.L.S. on the 24th day of April, 2007, and more particularly described as follows:

That portion of road dedicated by Plan LMP28843, called Parcel "A" and containing 230.8 square metres,

(hereinafter referred to as that portion of 87 Avenue)

shall be closed to traffic.

2. The dedication as highway be removed of said portion of 87 Avenue.
3. This By-law may be cited for all purposes as "Surrey Close and Remove the Dedication of Highway of a Portion of 87 Avenue West of 130 Street By-law, 2007, No. 16387".

READ A FIRST, SECOND AND THIRD TIME on the 30th day of April, 2007.

NOTICE OF INTENTION

ADVERTISED on the 4th and 11th day of May, 2007, in the SURREY NOW newspaper.

RECONSIDERED AND FINALLY ADOPTED, signed by the Mayor and Clerk, and sealed with the Corporate Seal on the 14th day of May, 2007.

_____ MAYOR

_____ CLERK

REFERENCE PLAN TO ACCOMPANY THE CITY OF SURREY
 HIGHWAY DEDICATION CANCELLATION BYLAW NO. 16387 COVERING
 ROAD SHOWN ON PLAN LMP28843 SECTION 29
 TOWNSHIP 2 NEW WESTMINSTER DISTRICT

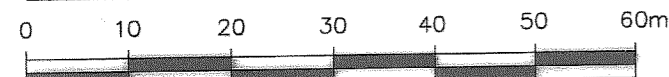
PURSUANT TO SECTION 120 OF THE LAND TITLE ACT AND SECTION 40 COMMUNITY CHARTER

B.C.G.S. 92G016

CITY OF SURREY

LEGEND

SCALE 1:750



(All distances are in metres)

Grid bearings are derived from observations between control monuments 5053 and 79H0026, Integrated Survey Area No. 1, Surrey, B.C. NAD 83 (CSRS)

- Indicates control monument found
- Indicates iron post found
- Indicates iron post placed

This plan shows horizontal ground-level measured distances. Prior to computation of U.T.M. co-ordinates, multiply by combined factor 0.99959355.

CITY OF SURREY

MAYOR: DIANNE L. WATTS

CITY CLERK: MARGARET JONES

WITNESS AS TO THE SIGNATURE OF THE CITY CLERK

Occupation of witness

Address of witness

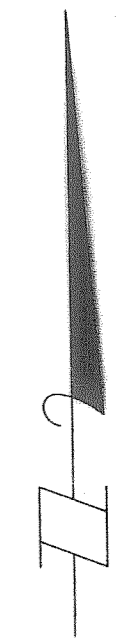
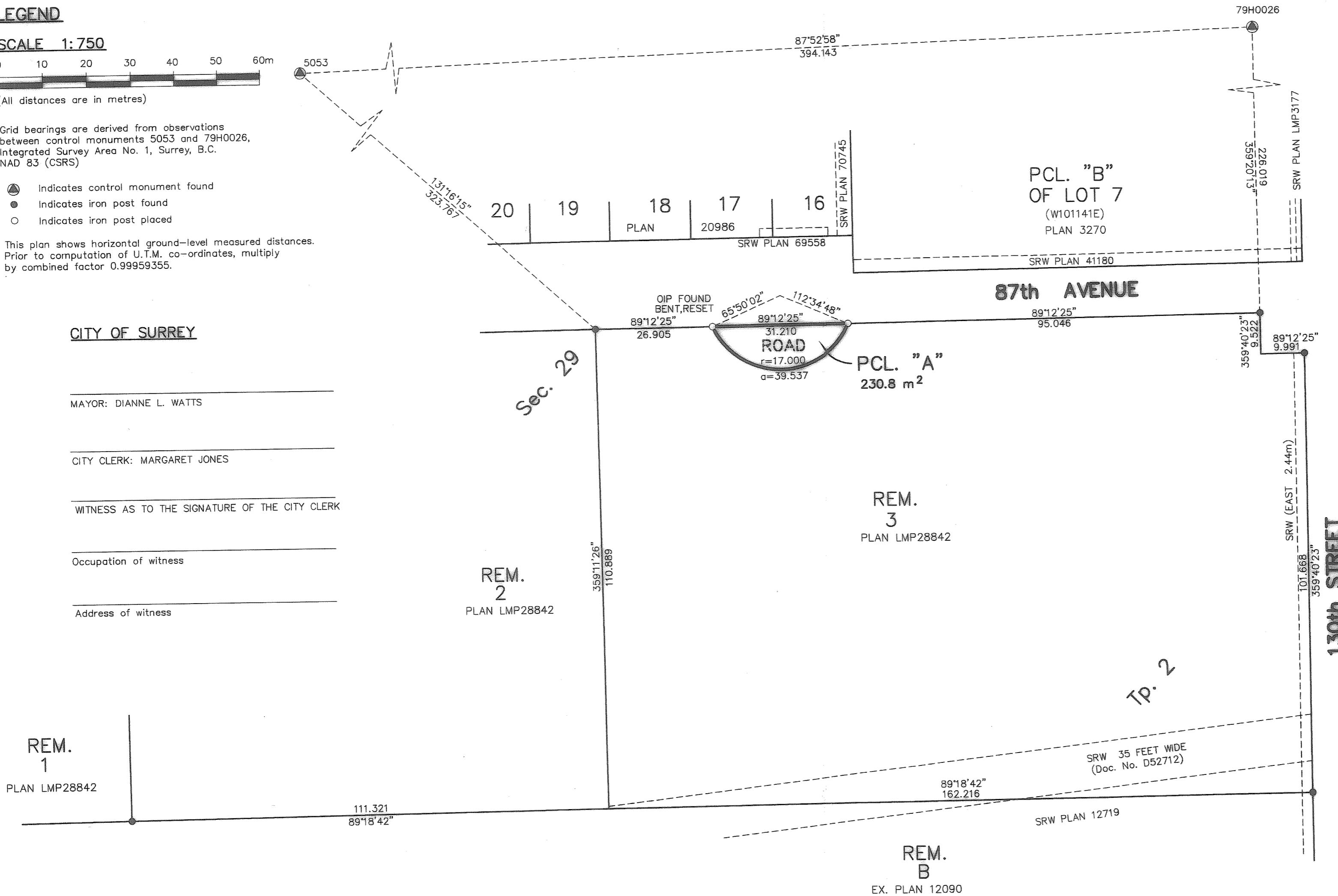
PLAN BCP

REF. No. _____

Deposited in the Land Title Office at New Westminster, B.C.

This _____ day of _____ 2007.

Assistant Deputy Registrar



REM. 1
PLAN LMP28842

REM. 2
PLAN LMP28842

REM. 3
PLAN LMP28842

REM. B
EX. PLAN 12090

**DHALIWAL & ASSOCIATES
 LAND SURVEYING INC.**

121 - 13140 80th Avenue
 Surrey, B.C.
 V3W 3B2
 (ph) 604 501-6188
 (fx) 604 501-6189
 FILE : 0602003-RX1.DWG

THIS PLAN LIES WITHIN THE GREATER VANCOUVER REGIONAL DISTRICT

I, Gene Paul Nikula, a British Columbia Land Surveyor, of Mission, in British Columbia, certify that I was present at and personally supervised the survey represented by this plan and that the survey and plan are correct. The field survey was completed on the 20th day of April, 2007. The plan was completed and checked, and the checklist filed under ECP # 63556, on the 24th day of April, 2007.

Gene Nikula

B.C.L.S. 803