

CITY OF SURREY

BY-LAW NO. 16379

A By-law to close and to remove the dedication  
of a highway of portions of 144A Street and Lane.  
.....

WHEREAS pursuant to Subsection 40(1)(a) of the *Community Charter*, S.B.C. 2003, c. 26, the Council may, by by-law, close all or part of a highway that is vested in the municipality to all or some types of traffic;

AND WHEREAS pursuant to Section 40(2) of the *Community Charter*, S.B.C. 2003, c. 26, the Council may, by by-law, remove the dedication of a highway that has been closed by a by-law under Subsection 40(1)(a).

NOW THEREFORE the Council of the City of Surrey in open meeting assembled, ENACTS as follows:

1. Those portions of road lying in Section 15, Township 2, New Westminster District, shown outlined in heavy black line on a Reference Plan attached hereto, and forming part of this by-law, duly signed by the Mayor and Clerk, prepared by G.A. Hol, B.C.L.S. on the 17th day of March, 2007, and more particularly described as follows:

That portion of road dedicated on Plan 19283, called Parcel B and containing 272.5 square metres

Portion of Lane

That portion of road dedicated by Plan 19283, called Parcel A and containing 350.1 square metres,

Portion of 144A Street

(hereinafter referred to as those portions of Lane and 144A Street)

shall be closed to traffic.

2. The dedication as highway be removed of said portions of 144A Street and Lane.
3. This By-law may be cited for all purposes as " Surrey Close and Remove the Dedication of Highway of a Portion of 144A Street and Lane between 144 Street and 144A Street at 70A Avenue By-law, 2007, No.16379".

READ A FIRST, SECOND AND THIRD TIME on the 30th day of April, 2007.

NOTICE OF INTENTION

ADVERTISED on the 4th and 11th day of May, 2007, in the SURREY NOW newspaper.

RECONSIDERED AND FINALLY ADOPTED, signed by the Mayor and Clerk, and sealed with the Corporate Seal on the 14th day of May, 2007.

\_\_\_\_\_ MAYOR

\_\_\_\_\_ CLERK

h:\by-laws\adopted bylaws\2007\16379.doc

REFERENCE PLAN OF PART OF ROAD IN SEC 15 TP 2 NWD DEDICATED ON PLAN 19283 AND PART OF LANE IN SEC 15 TP 2 NWD DEDICATED ON PLAN 19283 TO ACCOMPANY CITY OF SURREY HIGHWAY DEDICATION CANCELLATION BY-LAW NO. 16379

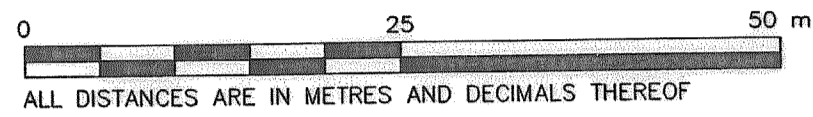
PLAN BCP

DEPOSITED IN THE LAND TITLE OFFICE AT NEW WESTMINSTER, B.C. THIS \_\_\_ DAY OF \_\_\_\_\_

PURSUANT TO SEC. 140 OF THE COMMUNITY CHARTER AND SEC. 120 OF THE LAND TITLE ACT

B.C.G.S. 92G.016

SCALE 1 : 500



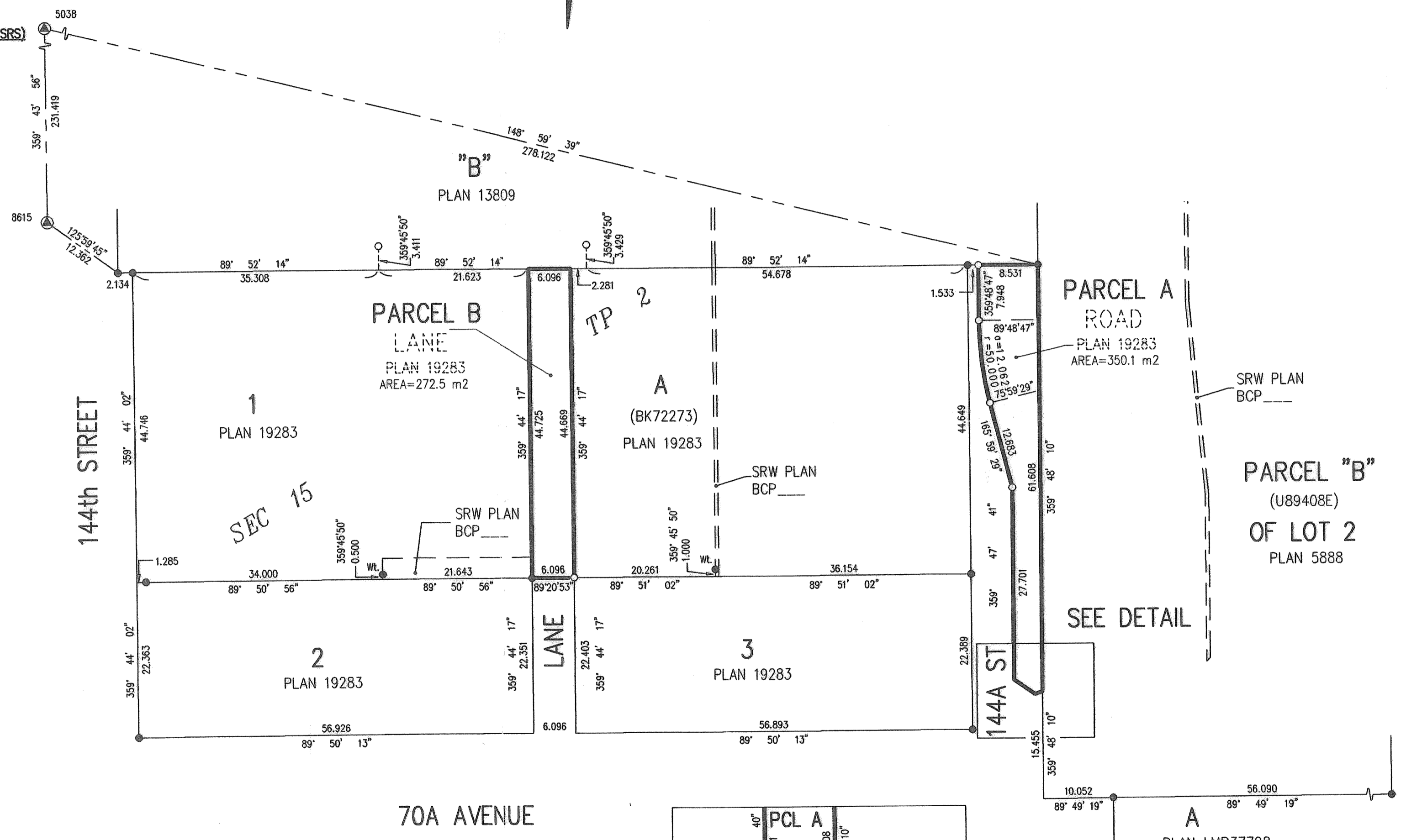
INTEGRATED SURVEY AREA No. 1. (MUNICIPALITY OF SURREY), NAD83 (CSRS)

THIS PLAN SHOWS HORIZONTAL GROUND-LEVEL DISTANCES EXCEPT WHERE OTHERWISE NOTED. TO COMPUTE GRID DISTANCES, MULTIPLY GROUND-LEVEL DISTANCES BY COMBINED FACTOR 0.9995944

GRID BEARINGS ARE DERIVED FROM OBSERVATIONS BETWEEN CONTROL MONUMENTS 5038 AND 8615

LEGEND

SYMBOLS FOUND	DESCRIPTION PLACED
⊙	CONTROL MONUMENT
○	STANDARD IRON POST
■	LEAD PLUG



THE CITY OF SURREY

MAYOR: DIANNE WATTS

CITY CLERK: MARG JONES

WITNESS AS TO SIGNATURE OF THE CITY CLERK (PRINT NAME CLEARLY NEAR SIGNATURE)

ADDRESS OF WITNESS

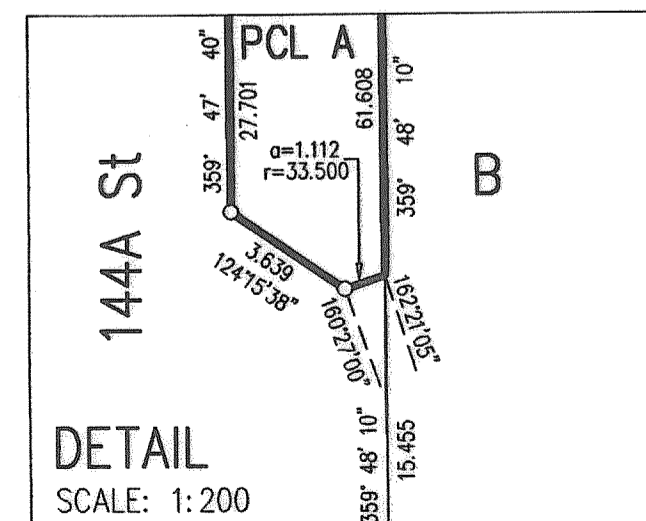
OCCUPATION OF WITNESS

I, G.A. HOL, A BRITISH COLUMBIA LAND SURVEYOR OF SURREY, IN BRITISH COLUMBIA, CERTIFY THAT I WAS PRESENT AT AND PERSONALLY SUPERINTENDED THE SURVEY REPRESENTED BY THIS PLAN, AND THAT THE SURVEY AND PLAN ARE CORRECT. THE FIELD SURVEY WAS COMPLETED ON THE 17th DAY OF MARCH, 2007. THE PLAN WAS COMPLETED AND CHECKED, AND THE CHECKLIST FILED UNDER ECP#62015, ON THE 17th DAY OF MARCH, 2007.

*G.A. Hol*

B.C.L.S.

THIS PLAN LIES WITHIN THE GREATER VANCOUVER REGIONAL DISTRICT - CITY OF SURREY



McELHANNEY ASSOCIATES LAND SURVEYING LTD. 13160 88th AVENUE SURREY, BC V3W 3K3 TEL: 604-596-0391 FILE: 2112-07322-02 DRAWN BY: S.M.