

CITY OF SURREY

BY-LAW NO. 16332

A By-law to close and to remove the dedication
of a highway of portions of Road at 176 Street and 56 Avenue.

.....

WHEREAS pursuant to Subsection 40(1)(a) of the *Community Charter*, S.B.C. 2003, c. 26, the Council may, by by-law, close all or part of a highway that is vested in the municipality to all or some types of traffic;

AND WHEREAS pursuant to Section 40(2) of the *Community Charter*, S.B.C. 2003, c. 26, the Council may, by by-law, remove the dedication of a highway that has been closed by a by-law under Subsection 40(1)(a).

NOW THEREFORE the Council of the City of Surrey in open meeting assembled, ENACTS as follows:

1. Those portions of road lying in District Lot 363, Group 2, New Westminster District, indicated on Plan LMP 52980 shown outlined in heavy black line on a Reference Plan attached hereto, and forming part of this by-law, duly signed by the Mayor and Clerk, prepared by A.M. Osman, B.C.L.S. on the 12th day of January, 2007, and more particularly described as follows:

That portion of road called Parcel "A" and containing 0.164 hectares; and

That portion of road called Parcel "B" and containing 0.208 hectares,

(hereinafter referred to as those portions of Road)

shall be closed to traffic.

2. The dedication as highway be removed of said portions of Road.
3. This By-law may be cited for all purposes as "Surrey Close and Remove the Dedication of Highway of a Portion of Road at 176 Street and 56 Avenue By-law, 2007, No. 16332".

READ A FIRST, SECOND AND THIRD TIME on the 12th day of March, 2007.

NOTICE OF INTENTION

ADVERTISED on the 7th and 14th day of April, 2007, in the SURREY NOW Community newspaper.

RECONSIDERED AND FINALLY ADOPTED, signed by the Mayor and Clerk, and sealed with the Corporate Seal on the 16th day of April, 2007.

_____ MAYOR

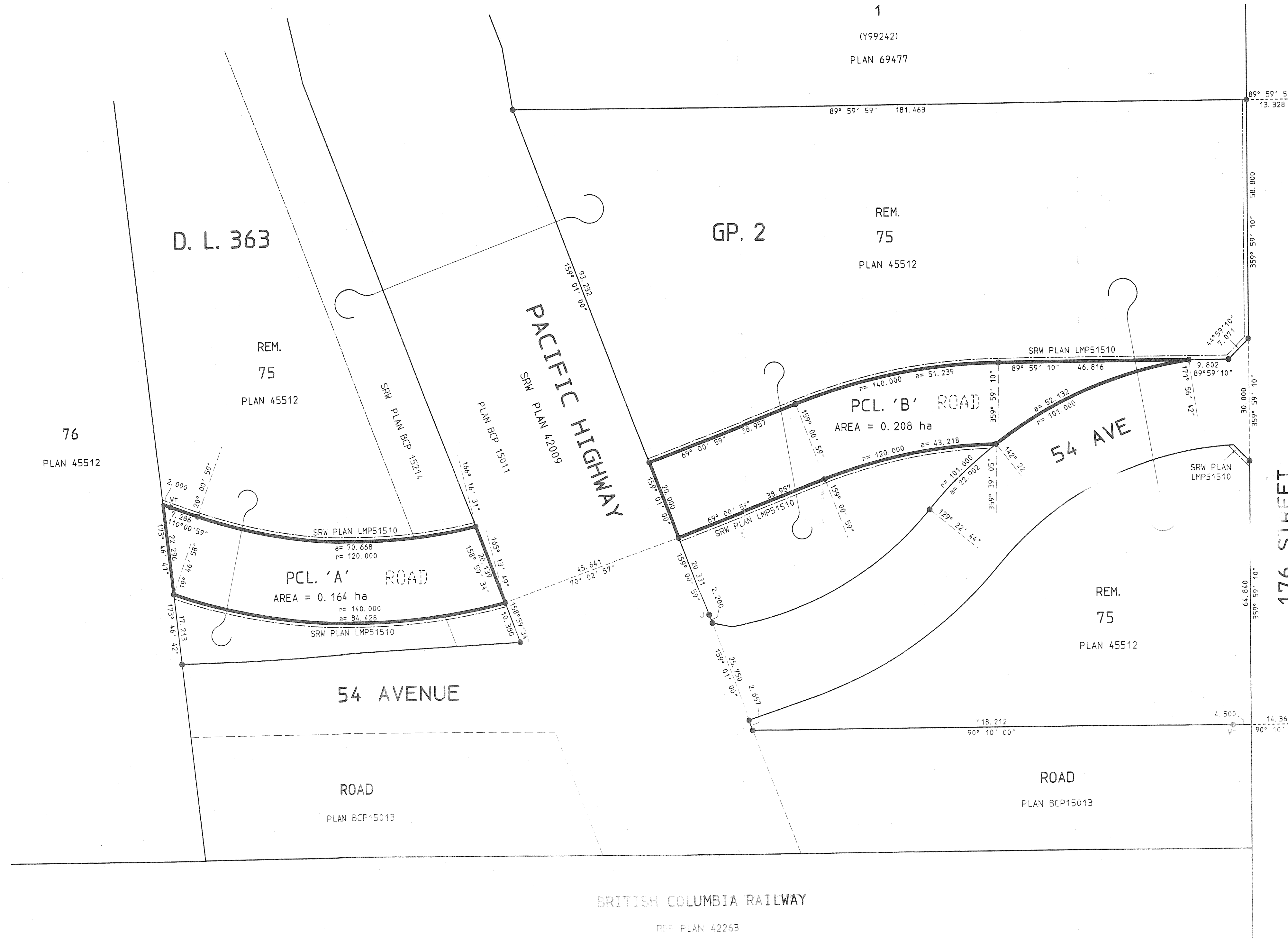
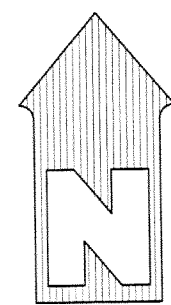
_____ CLERK

REFERENCE PLAN TO ACCOMPANY THE CITY OF SURREY
 HIGHWAY DEDICATION CANCELLATION BYLAW NUMBER 1633Z
 OF PORTIONS OF ROAD DEDICATED BY PLAN LMP52980
 DISTRICT LOT 363, GROUP 2
 NEW WESTMINSTER DISTRICT

PURSUANT TO SECTION 120 OF THE LAND TITLE ACT &
 PURSUANT TO SECTION 40 OF THE COMMUNITY CHARTER
 B. C. G. S. 92G.017
 SCALE 1: 600

INTEGRATED SURVEY AREA No. 1
 CITY OF SURREY, NAD83 (CSRS)
 GRID BEARINGS ARE DERIVED FROM OBSERVATION
 BETWEEN CONTROL MONUMENTS 80H2060 AND 80H2061
 THIS PLAN SHOWS GROUND-LEVEL MEASURED DISTANCES.
 PRIOR TO COMPUTATION OF U.T.M. CO-ORDINATES
 MULTIPLY BY COMBINED FACTOR OF 0.9996071
 DISTANCES ARE IN METRES AND DECIMALS THEREOF.

- ⊙ DENOTES CONTROL MONUMENT
- DENOTES STANDARD IRON POST FOUND
- DENOTES STANDARD IRON POST PLACED
- W DENOTES WITNESS
- U DENOTES UNREGISTERED



PLAN BCP _____

DEPOSITED IN THE LAND TITLE OFFICE
 AT NEW WESTMINSTER, B. C.

THIS ____ DAY OF _____, 20__

REGISTRAR

CITY OF SURREY

MAYOR - DIANNE L. WATTS

CITY CLERK

WITNESS (AS TO SIGNATURE OF CITY CLERK)

PRINTED NAME OF WITNESS

OCCUPATION

ADDRESS

I, A. M. OSMAN, A BRITISH COLUMBIA LAND SURVEYOR
 OF LANGLEY, BRITISH COLUMBIA, CERTIFY THAT I WAS
 PRESENT AT AND PERSONALLY SUPERINTENDED THE
 SURVEY REPRESENTED BY THIS PLAN AND THAT THE
 SURVEY AND PLAN ARE CORRECT. THE FIELD SURVEY
 WAS COMPLETED ON THE 9th DAY OF JANUARY, 2007
 THE PLAN WAS COMPLETED AND CHECKED, AND THE
 CHECKLIST FILED UNDER ECP-59547 ON THE
 12th DAY OF JANUARY, 2007

A. M. Osman

BCLS