

CITY OF SURREY

BY-LAW NO. 16255

A By-law to close and to remove the dedication
of a highway of a portion of Lane.

.....

WHEREAS pursuant to Subsection 40(1)(a) of the *Community Charter*, S.B.C. 2003, c. 26, the Council may, by by-law, close all or part of a highway that is vested in the municipality to all or some types of traffic;

AND WHEREAS pursuant to Section 40(2) of the *Community Charter*, S.B.C. 2003, c. 26, the Council may, by by-law, remove the dedication of a highway that has been closed by a by-law under Subsection 40(1)(a).

NOW THEREFORE the Council of the City of Surrey in open meeting assembled, ENACTS as follows:

1. That portion of road lying in Section 16 Township 1 New Westminster District, shown outlined in heavy black line on a Reference Plan attached hereto, and forming part of this by-law, duly signed by the Mayor and Clerk, prepared by Ken W. Schuurman, B.C.L.S. on the 30th day of January, 2007, and more particularly described as follows:

That portion of road dedicated by Plan 57778, called Parcel "A"
and containing 367.7 square metres,

(hereinafter referred to as that portion of Lane)

shall be closed to traffic.

2. The dedication as highway be removed of said portion of Lane.
3. This By-law may be cited for all purposes as "Surrey Close and Remove the Dedication of Highway of a Portion of Lane at 18 Avenue and 140 Street By-law, 2007, No. 16255".

READ A FIRST, SECOND AND THIRD TIME on the 12th day of February, 2007.

NOTICE OF INTENTION

ADVERTISED on the 17th day of February and on the 24th day of February, 2007, in the SURREY LEADER/PEACE ARCH Community newspaper.

RECONSIDERED AND FINALLY ADOPTED, signed by the Mayor and Clerk, and sealed with the Corporate Seal on the 26th day of February, 2007.

_____ MAYOR

_____ CLERK

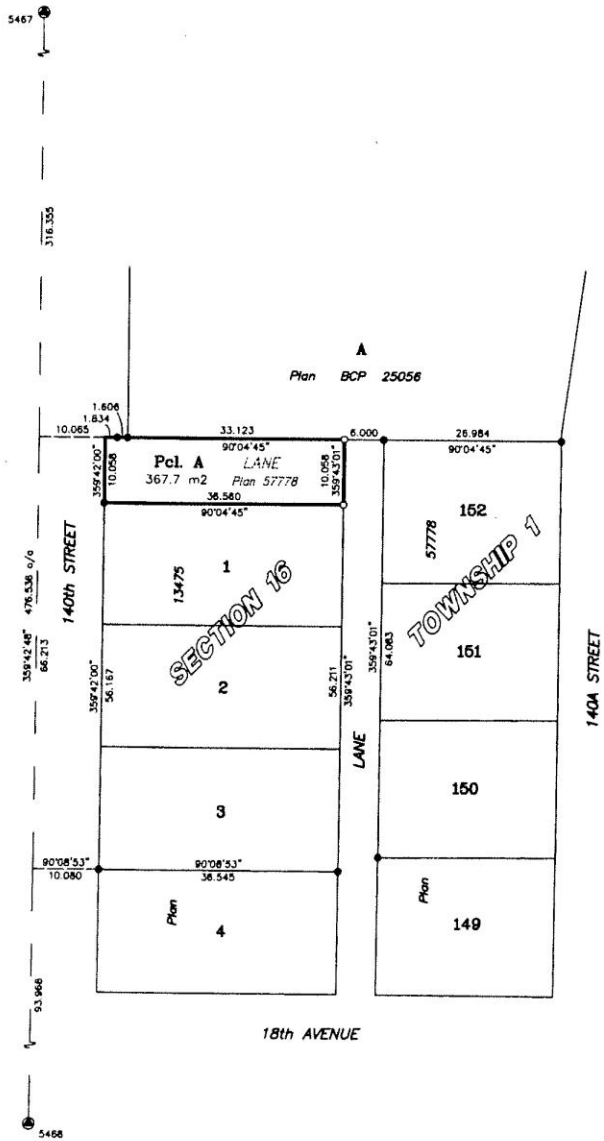
**REFERENCE PLAN TO ACCOMPANY ROAD DEDICATION CANCELLATION
BYLAW NO. 16255 COVERING ROAD SHOWN ON PLAN 57778,
SECTION 16, TOWNSHIP 1, NEW WESTMINSTER DISTRICT**

Pursuant to Section 120 of the Land Title Act & Section 40 Community Charter
City of Surrey BCGS 926.006



Integrated Survey Area No. 1, Surrey, B.C.
Grid bearings are derived from observations
between Control Monuments 5467 & 5468
NAD 83 (CSRS)
This Plan shows ground level measured
distances. Prior to computation of U.T.M.
coordinates, multiply by combined factor
0.9995907.

- Legend:**
- Denotes control monument found
 - Denotes iron post found
 - Denotes iron post set
 - m2 Denotes square metres



PLAN BCP

Deposited in the Land Title Office at
New Westminster, B.C. this _____ day
of _____, 2007.

Deputy Registrar

Ref. No. _____

CITY OF SURREY

Mayor Dianne Watts

City Clerk Margaret Jones

Witness (sign & print name clearly)

Address of Witness

Occupation of Witness

Cameron Land Surveying Ltd.
B.C. Land Surveyors
Unit 206 - 16055 Fraser Highway
Surrey, B.C. V4N 0G2
Phone: 604-597-3777
Fax: 604-597-3783

This plan lies within the Greater Vancouver Regional District

I, Ken W. Schuurman, a British Columbia Land
Surveyor of Surrey, in British Columbia certify
that I was present at and personally superintended
the survey and plan are correct. The field survey
was completed on the 25th day of January, 2007.
The plan was completed and checked, and the
checklist filed under #60187, on the 30th day
of January, 2007.

Ken W. Schuurman, B.C.L.S.

File: 4399-REF