

CITY OF SURREY

BY-LAW NO. 16190

A By-law to close and to remove the dedication  
of a highway of portions of 135 Street.

.....

WHEREAS pursuant to Subsection 40(1)(a) of the *Community Charter*, S.B.C. 2003, c. 26, the Council may, by by-law, close all or part of a highway that is vested in the municipality to all or some types of traffic;

AND WHEREAS pursuant to Section 40(2) of the *Community Charter*, S.B.C. 2003, c. 26, the Council may, by by-law, remove the dedication of a highway that has been closed by a by-law under Subsection 40(1)(a).

NOW THEREFORE the Council of the City of Surrey in open meeting assembled, ENACTS as follows:

1. Those portions of road lying in Section 17 Township 1 New Westminster District, dedicated by Plan 15499, shown outlined in heavy black line on a Reference Plan attached hereto, and forming part of this by-law, duly signed by the Mayor and Clerk, prepared by John Onderwater, B.C.L.S. on the 10th day of November, 2006, and more particularly described as follows:

Portion of road called Parcel "A" and containing 871.8 square metres,

Portion of road called Parcel "B" and containing 208.7 square metres,

Portion of road called Parcel "C" and containing 125.9 square metres,

Portion of road called Parcel "D" and containing 125.9 square metres,

Portion of road called Parcel "E" and containing 118.7 square metres,

(hereinafter referred to as those portions of 135 Street)

shall be closed to traffic.

2. The dedication as highway be removed of said portions of 135 Street.
3. This By-law may be cited for all purposes as "Surrey Close and Remove the Dedication of Highway of a Portion of 135 Street By-law, 2006, No. 16190".

READ A FIRST, SECOND AND THIRD TIME on the 18th day of December, 2006.

NOTICE OF INTENTION

ADVERTISED on the 23rd and 24th day of December and on the 30th and 31st day of December, 2006, in the SURREY LEADER/PEACE ARCH Community newspaper.

RECONSIDERED AND FINALLY ADOPTED, signed by the Mayor and Clerk, and sealed with the Corporate Seal on the 15th day of January, 2007.

\_\_\_\_\_ MAYOR

\_\_\_\_\_ CLERK

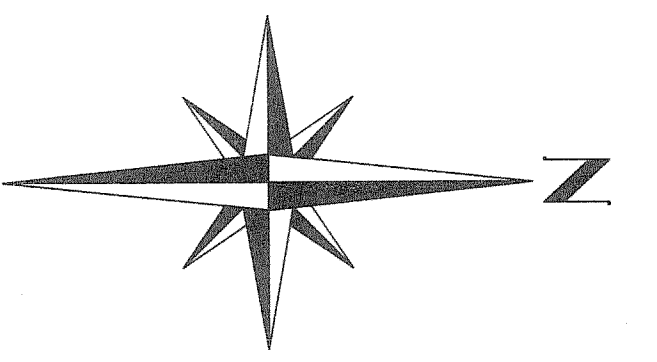
**REFERENCE PLAN TO ACCOMPANY CITY OF SURREY  
HIGHWAY DEDICATION CANCELLED BY PLAN 15499,  
OF PARTS OF ROAD DEDICATED BY PLAN 15499,  
SECTION 17, TOWNSHIP 1 N.W.D.  
PURSUANT TO SECTION 120 OF THE LAND TITLE ACT  
B.C.G.S. 929.006**

**PLAN BCP**

Deposited in the Land Title Office  
of New Westminster B.C. on  
This \_\_\_\_\_ Day of \_\_\_\_\_, 2006.

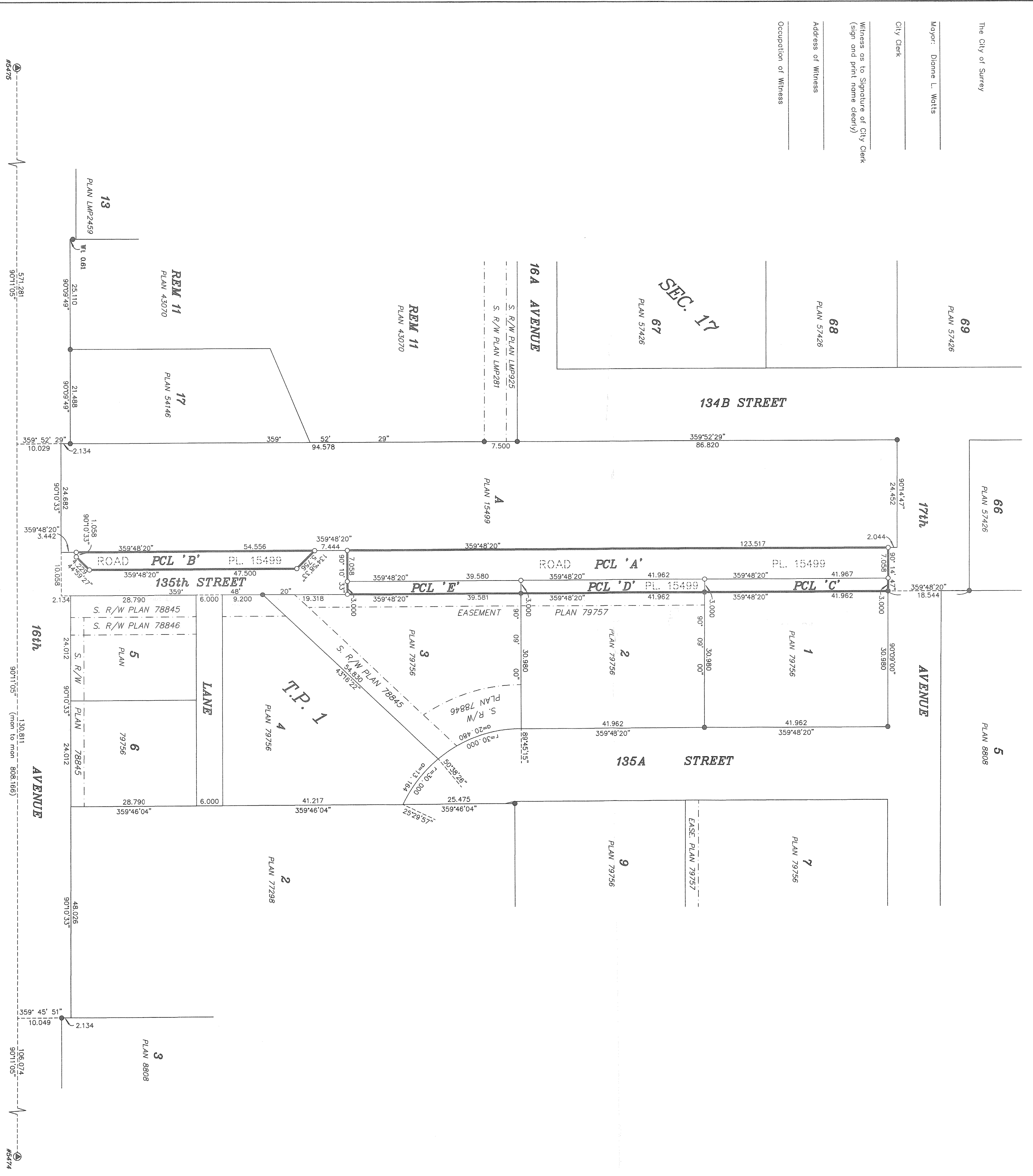
Ref. No. \_\_\_\_\_  
Registrar

SCALE 1:500  
All Distances are in Metres.



**LEGEND:**  
 ● Denotes Control Monument found.  
 ○ Denotes Standard Iron Post found.  
 ○ Denotes Standard Iron Post set.  
 Grid Bearings are derived from 5474 & 5475.

BOOK OF REFERENCE	AREA
ROAD BEING CLOSED SHOWN IN HEAVY OUTLINE AND AS PARCEL 'A', ROAD IN SECTION 17 TOWNSHIP 1 N.W.D., DEDICATED BY PLAN 15499	871.8m <sup>2</sup>
ROAD BEING CLOSED SHOWN IN HEAVY OUTLINE AND AS PARCEL 'B', ROAD IN SECTION 17 TOWNSHIP 1 N.W.D., DEDICATED BY PLAN 15499	209.7m <sup>2</sup>
ROAD BEING CLOSED SHOWN IN HEAVY OUTLINE AND AS PARCEL 'C', ROAD IN SECTION 12 TOWNSHIP 1 N.W.D., DEDICATED BY PLAN 15499	123.9m <sup>2</sup>
ROAD BEING CLOSED SHOWN IN HEAVY OUTLINE AND AS PARCEL 'D', ROAD IN SECTION 17 TOWNSHIP 1 N.W.D., DEDICATED BY PLAN 15499	125.9m <sup>2</sup>
ROAD BEING CLOSED SHOWN IN HEAVY OUTLINE AND AS PARCEL 'E', ROAD IN SECTION 12 TOWNSHIP 1 N.W.D., DEDICATED BY PLAN 15499	118.7m <sup>2</sup>



The City of Surrey  
 Mayor: Dionne L. Watts  
 City Clerk  
 Witness as to Signature of City Clerk (sign and print name clearly)  
 Address of Witness  
 Occupation of Witness

**Integrated Survey Area No. 1  
CITY OF SURREY**  
 This plan shows ground level measured distances, prior to compensation factors of 0.99999999 NA083 (CSRS)  
 Underwater Land Surveying  
 B.C. Land Surveyors  
 #104 - 5890 176 A STREET  
 Cloverdale, BC  
 FILE: J506110-R

*This Plan Lies Within The  
Greater Vancouver Regional District*

I, John P. Underwater, a British Columbia Land Surveyor, of Cloverdale in British Columbia, certify that I was present at and personally supervised the survey represented by this plan, and that the survey and plan are correct. The field survey was completed on the 8th day of November, 2006. The plan was completed and checked, and the checklist filed under #37154 on the 10th day of November, 2006.

*[Signature]*  
B.C.L.S.