

CITY OF SURREY

BY-LAW NO. 16189

A By-law to close and to remove the dedication
of a highway of a portion of Road at 104 Avenue and 125 Street.

.....

WHEREAS pursuant to Subsection 40(1)(a) of the *Community Charter*, S.B.C. 2003, c. 26, the Council may, by by-law, close all or part of a highway that is vested in the municipality to all or some types of traffic;

AND WHEREAS pursuant to Section 40(2) of the *Community Charter*, S.B.C. 2003, c. 26, the Council may, by by-law, remove the dedication of a highway that has been closed by a by-law under Subsection 40(1)(a).

NOW THEREFORE the Council of the City of Surrey in open meeting assembled, ENACTS as follows:

1. That portion of road lying in Block C, Section 20, Block 5 North, Range 2 West, New Westminster District, shown outlined in heavy black line on a Reference Plan attached hereto, and forming part of this by-law, duly signed by the Mayor and Clerk, prepared by Kenneth W. Schuurman, B.C.L.S. on the 7th day of December, 2006, and more particularly described as follows:

That portion of road dedicated by Plan 32554, called Parcel "A"
and containing 177.2 square metres,

(hereinafter referred to as that portion of Road)

shall be closed to traffic.

2. The dedication as highway be removed of said portion of Road.
3. This By-law may be cited for all purposes as "Surrey Close and Remove the Dedication of Highway of a Portion of Road at 104 Avenue and 125 Street By-law, 2006, No. 16189".

READ A FIRST, SECOND AND THIRD TIME on the 18th day of December, 2006.

NOTICE OF INTENTION

ADVERTISED on the 23rd and 24th day of December and on the 30th and 31st day of December, 2006, in the SURREY LEADER/PEACE ARCH Community newspaper.

RECONSIDERED AND FINALLY ADOPTED, signed by the Mayor and Clerk, and sealed with the Corporate Seal on the 15th day of January, 2007.

_____ MAYOR

_____ CLERK

REFERENCE PLAN TO ACCOMPANY CITY OF SURREY HIGHWAY DEDICATION
 CANCELLATION BYLAW NO. 16189 COVERING ROAD SHOWN ON
 PLAN 32554, BLOCK C, SECTION 20, BLOCK 5 NORTH, RANGE 2 WEST, N.W.D.

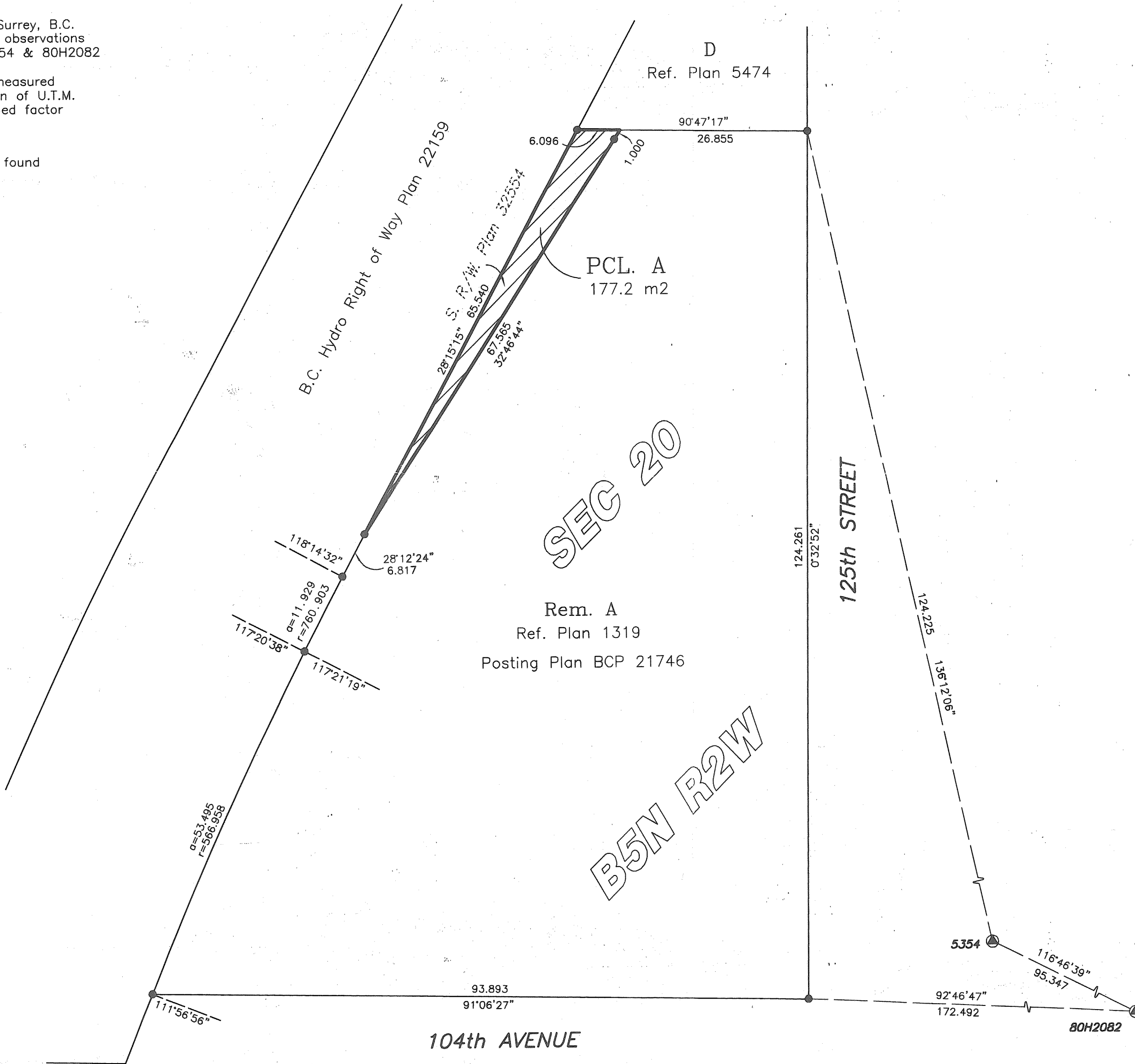
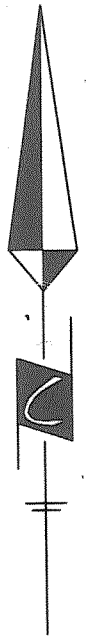
Pursuant to Section 120 of the Land Title Act & Section 40 Community Charter
 City of Surrey, B.C.G.S. 92G.016



SCALE - 1 : 500
 All distances are in metres

Integrated Survey Area No. 1, Surrey, B.C.
 Grid bearings are derived from observations
 between Control Monuments 5354 & 80H2082
 NAD 83 (CSRS).
 This Plan shows ground level measured
 distances. Prior to computation of U.T.M.
 coordinates, multiply by combined factor
 0.99959395

- Legend:
- ⊙ Denotes control monument found
 - Denotes iron post found
 - Denotes iron post set
 - m² Denotes square metres



Plan BCP _____
 Deposited In The Land Title Office
 At New Westminster, B.C.
 This ___ Day Of _____, 2006.

 Registrar

Ref. No. _____

CITY OF SURREY

 Mayor - Dianne Watts

 City Clerk - Margaret Jones

 Witness as to signature of the City Clerk

 Address of Witness

 Occupation of Witness

I, Kenneth W. Schuurman, a British Columbia Land
 Surveyor of Surrey, in British Columbia certify
 that I was present at and personally superintended
 the survey represented by this plan, and that the
 survey and plan are correct. The field survey
 was completed on the 5th day of December, 2006.
 The plan was completed and checked, and the
 checklist filed under #58380, on the 7th day
 of December, 2006.

Ken Schuurman

 Kenneth W. Schuurman, B.C.L.S.

Cameron Land Surveying Ltd.
 B.C. Land Surveyors
 Unit 206 - 16055 Fraser Highway
 Surrey, B.C. V4N 0G2
 Phone: 604-597-3777
 Fax: 604-597-3783

This plan lies within the Greater Vancouver Regional District

File: 4331-RC