

CITY OF SURREY

BY-LAW NO. 16158

A By-law to close and to remove the dedication
of a highway of a portion of 140 Street.

.....

WHEREAS pursuant to Subsection 40(1)(a) of the *Community Charter*, S.B.C. 2003, c. 26, the Council may, by by-law, close all or part of a highway that is vested in the municipality to all or some types of traffic;

AND WHEREAS pursuant to Section 40(2) of the *Community Charter*, S.B.C. 2003, c. 26, the Council may, by by-law, remove the dedication of a highway that has been closed by a by-law under Subsection 40(1)(a).

NOW THEREFORE the Council of the City of Surrey in open meeting assembled, ENACTS as follows:

1. That portion of road lying in Section 21, Township 1, New Westminster District, shown outlined in heavy black line on a Reference Plan attached hereto, and forming part of this by-law, duly signed by the Mayor and Clerk, prepared by Gene Paul Nikula, B.C.L.S. on the 2nd day of October, 2006, and more particularly described as follows:

That portion of road dedicated by Plan LMP16163, called Parcel "A" and containing 0.106 hectares and 31.6 square metres, totaling 0.109 hectares.

(hereinafter referred to as that portion of 140 Street)

shall be closed to traffic.

2. The dedication as highway be removed of said portion of 140 Street.
3. This By-law may be cited for all purposes as "Surrey Close and Remove the Dedication of Highway of a Portion of 140 Street at 32 Avenue By-law, 2006, No. 16158".

READ A FIRST, SECOND AND THIRD TIME on the 20th day of November, 2006.

NOTICE OF INTENTION

ADVERTISED on the 25th and 26th day of November and on the 2nd and 3rd day of December, 2006, in the SURREY LEADER/PEACE ARCH Community newspaper.

RECONSIDERED AND FINALLY ADOPTED, signed by the Mayor and Clerk, and sealed with the Corporate Seal on the 4th day of December, 2006.

_____ MAYOR

_____ CLERK

**REFERENCE PLAN TO ACCOMPANY THE CITY OF SURREY
HIGHWAY DEDICATION CANCELLATION BYLAW NO. 16158 COVERING
ROAD SHOWN ON PLAN LMP16163 SECTION 21 TOWNSHIP 1
NEW WESTMINSTER DISTRICT**

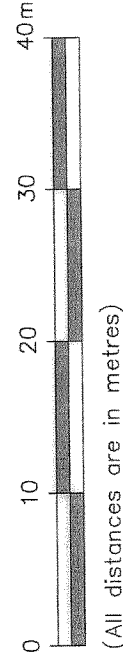
PURSUANT TO SECTION 120 OF THE LAND TITLE ACT AND SECTION 40 COMMUNITY CHARTER

B.C.G.S. 92G006

CITY OF SURREY

LEGEND

SCALE 1:500



(All distances are in metres)

Grid bearings are derived from observations between control monuments 5437 and 5434, Integrated Survey Area No. 1, Surrey, B.C. NAD 83 (CSRS)

- Indicates control monument found
- Indicates iron post found
- Indicates iron post placed

This plan shows ground-level measured distances. Prior to computation of U.T.M. co-ordinates, multiply by average combined factor 0.9995971.

5434



BOOK OF REFERENCE

LEGAL DESCRIPTION	AREA
PARCEL "A" SECTION 21 TOWNSHIP 1 N.W.D.	0.109 ha

CITY OF SURREY

MAYOR: DIANNE WATTS

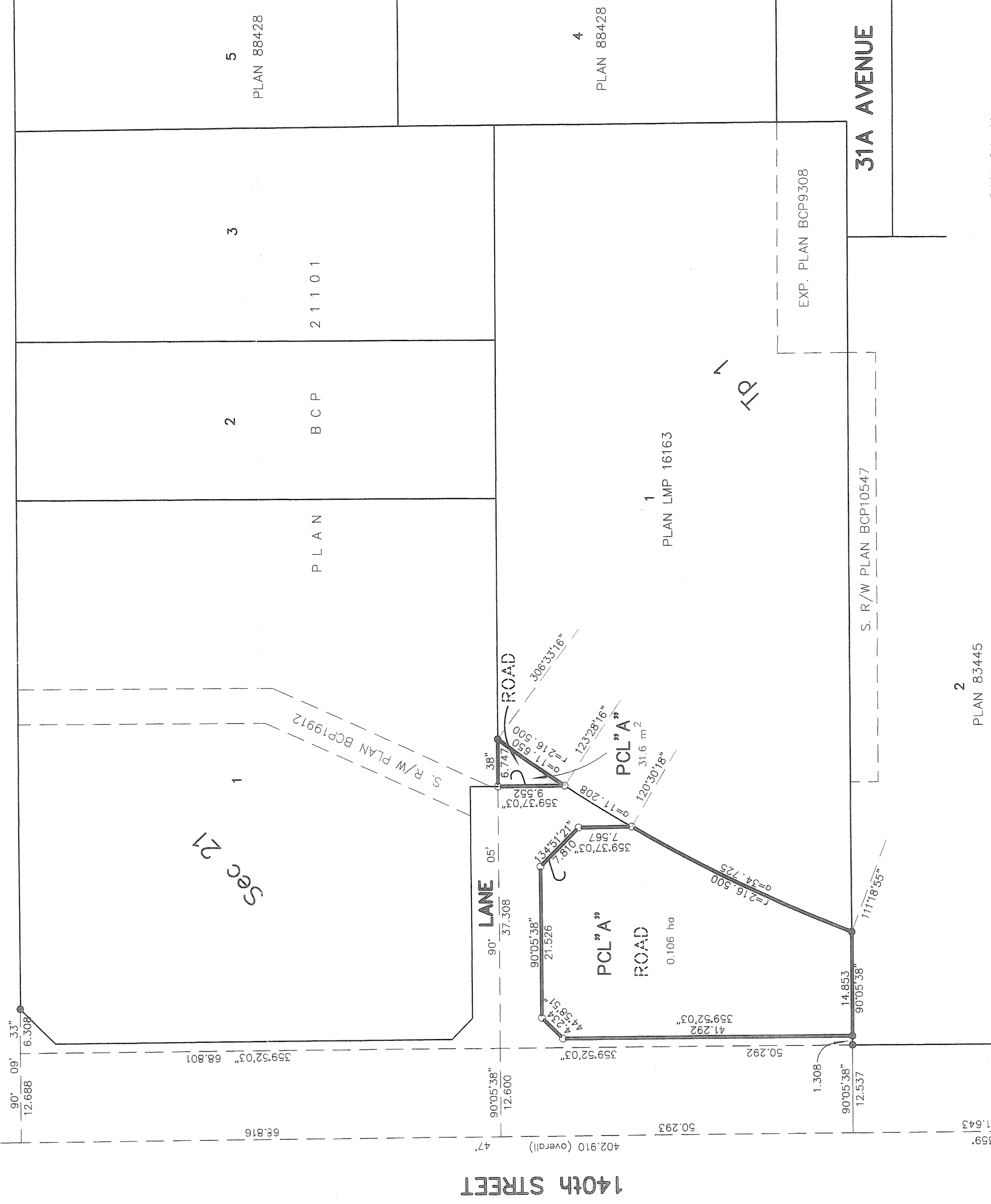
CITY CLERK: MARGARET JONES

WITNESS AS TO THE SIGNATURE OF THE CITY CLERK

Occupation of witness

Address of witness

32nd AVENUE



2
PLAN 83445

I, Gene Paul Nikula, a British Columbia Land Surveyor, of Mission, in British Columbia, certify that I was present at and personally superintended the survey represented by this plan and that the survey and plan are correct. The field survey was completed on the 15th day of September, 2006. The plan was completed and checked, and the checklist filed under ECP # 54972, on the 2nd day of October, 2006.

Gene Nikula

B.C.L.S. 803

**DHALIWAL & ASSOCIATES
LAND SURVEYING INC.**

121 - 13140 80th Avenue
Surrey, B.C.
V3W 3B2
(ph) 604 501-6188
(fx) 604 501-6189
FILE : 0602002-RX1.DWG

5437

THIS PLAN LIES WITHIN THE GREATER VANCOUVER REGIONAL DISTRICT