

CITY OF SURREY

BY-LAW NO. 16136

A By-law to close and to remove the dedication
of a highway of portions of 158 Street.
.....

WHEREAS pursuant to Subsection 40(1)(a) of the *Community Charter*, S.B.C. 2003, c. 26, the Council may, by by-law, close all or part of a highway that is vested in the municipality to all or some types of traffic;

AND WHEREAS pursuant to Section 40(2) of the *Community Charter*, S.B.C. 2003, c. 26, the Council may, by by-law, remove the dedication of a highway that has been closed by a by-law under Subsection 40(1)(a).

NOW THEREFORE the Council of the City of Surrey in open meeting assembled, ENACTS as follows:

1. Those portions of road lying in Section 23 Township 1 New Westminster District shown outlined in heavy black line on a Reference Plan attached hereto, and forming part of this by-law, duly signed by the Mayor and Clerk, prepared by Raymond Janzen, B.C.L.S. on the 10th day of April, 2006, and more particularly described as follows:

That portion of road dedicated by Plan 12551, called Parcel A and containing 919.5 square metres,

That portion of road dedicated by Plan 12551, called Parcel B and containing 0.251 hectares,

(hereinafter referred to as those portions of 158 Street)

shall be closed to traffic.

2. The dedication as highway be removed of said portions of 158 Street.
3. This By-law may be cited for all purposes as "Surrey Close and Remove the Dedication of Highway of a Portion of 158 Street between 24 Avenue and 26 Avenue By-law, 2006, No. 16136".

READ A FIRST, SECOND AND THIRD TIME on the 30th day of October, 2006.

NOTICE OF INTENTION

ADVERTISED on the 4th and 5th day of November and on the 11th and 12th day of November, 2006, in the SURREY LEADER/PEACE ARCH Community newspaper.

RECONSIDERED AND FINALLY ADOPTED, signed by the Mayor and Clerk, and sealed with the Corporate Seal on the 20th day of November, 2006.

_____ MAYOR

_____ CLERK

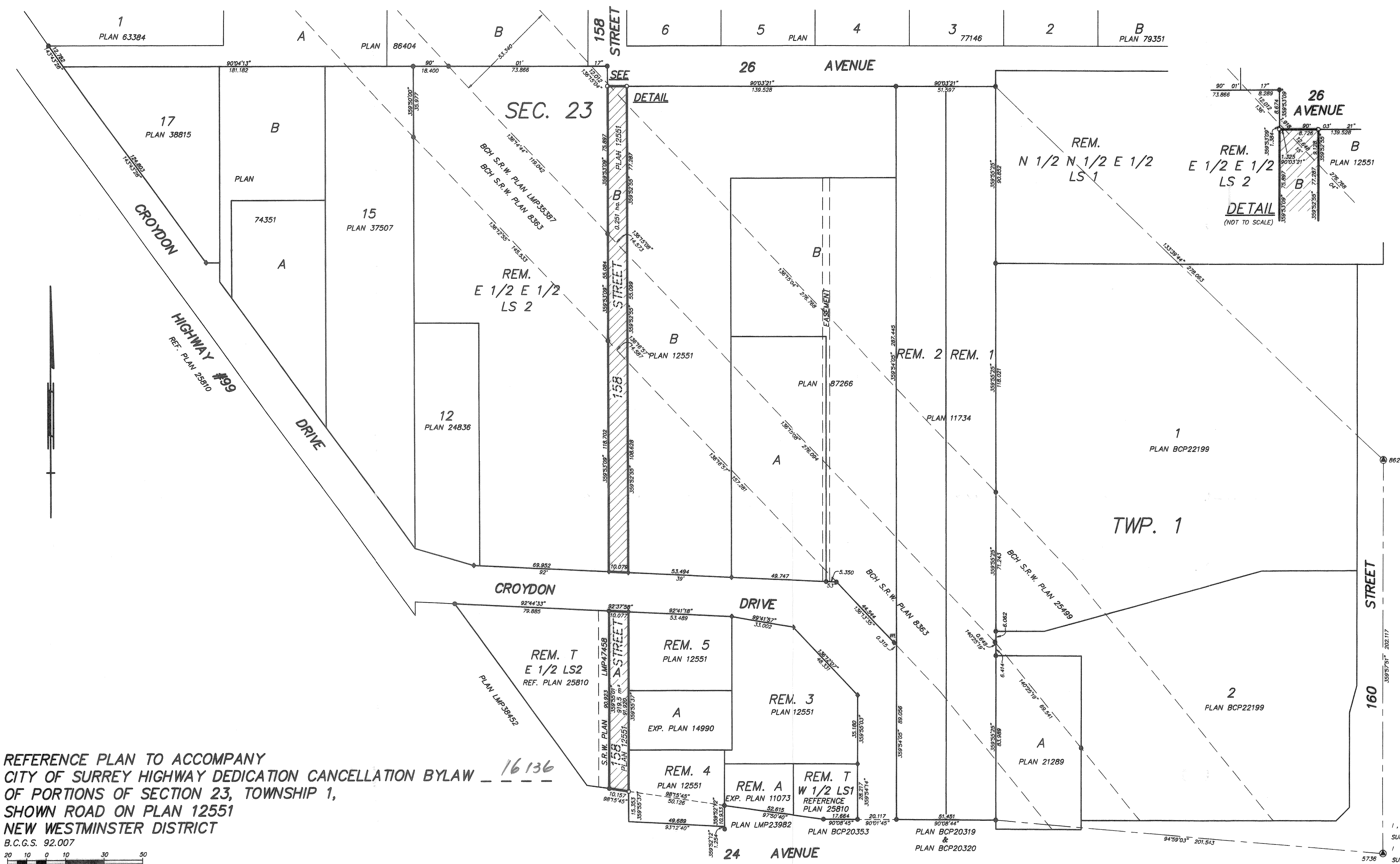
h:\by-laws\adopted bylaws\2006\16136.doc

PLAN BCP

DEPOSITED IN THE LAND TITLE OFFICE
AT NEW WESTMINSTER, B.C.
THIS DAY OF _____, 2006.

REGISTRAR

REF:



OWNER: CITY OF SURREY

MAYOR: DIANNE WATTS

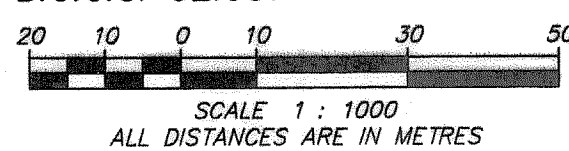
CITY CLERK: MARGARET JONES

WITNESS AS TO SIGNATURE OF THE CITY CLERK

ADDRESS OF WITNESS

OCCUPATION OF WITNESS

REFERENCE PLAN TO ACCOMPANY
CITY OF SURREY HIGHWAY DEDICATION CANCELLATION BYLAW
OF PORTIONS OF SECTION 23, TOWNSHIP 1,
SHOWN ROAD ON PLAN 12551
NEW WESTMINSTER DISTRICT
B.C.G.S. 92.007



PURSUANT TO SECTION 120, LAND TITLE ACT
AND SECTION 40 OF THE COMMUNITY CHARTER

MURRAY & ASSOCIATES
201-12448 82nd AVENUE
SURREY, B.C.
V3W 3E9
(604) 592-9189

LEGEND:

- ⊙ INDICATES CONTROL MONUMENT FOUND
- INDICATES STANDARD IRON POST FOUND
- ◆ INDICATES ALUMINUM POST FOUND
- INDICATES STANDARD IRON POST PLACED
- WL INDICATES WITNESS

GRID BEARINGS ARE DERIVED FROM OBSERVATIONS BETWEEN
CONTROL MONUMENTS 5736 AND 8622,
INTEGRATED SURVEY AREA #1, CITY OF SURREY.
DISTANCES SHOWN ARE GROUND LEVEL MEASURED DISTANCES.
PRIOR TO COMPUTATION OF U.T.M. CO-ORDINATES MULTIPLY
BY THE MEAN COMBINED FACTOR 0.9995915 (NAD 83 C.S.R.S.).

THIS PLAN LIES WITHIN THE GREATER VANCOUVER REGIONAL DISTRICT
(CITY OF SURREY)

BOOK OF REFERENCE					
LOT	SEC.	TP.	DIST.	PLAN	AREA
ROAD (158 STREET)	23	1	N.W.D.	12551	919.5 m ²
ROAD (158 STREET)	23	1	N.W.D.	12551	0.251 ha.

I, RAYMOND HAROLD JANZEN, A BRITISH COLUMBIA LAND SURVEYOR, OF DELTA, IN BRITISH COLUMBIA, CERTIFY THAT I WAS PRESENT AT AND PERSONALLY SUPERINTENDED THE SURVEY REPRESENTED BY THIS PLAN, AND THAT THE SURVEY AND PLAN ARE CORRECT. THE FIELD SURVEY WAS COMPLETED ON THE 10th DAY OF APRIL, 2006. THE PLAN WAS COMPLETED AND CHECKED, AND THE CHECKLIST FILED UNDER # ECP46818 ON THE 8th DAY OF APRIL, 2006.

[Signature]
B. C. L. S.
FILE 9223-04