

CITY OF SURREY

BY-LAW NO. 16108

A By-law to close and to remove the dedication  
of a highway of a portion of King George Highway.

.....

WHEREAS pursuant to Subsection 40(1)(a) of the *Community Charter*, S.B.C. 2003, c. 26, the Council may, by by-law, close all or part of a highway that is vested in the municipality to all or some types of traffic;

AND WHEREAS pursuant to Section 40(2) of the *Community Charter*, S.B.C. 2003, c. 26, the Council may, by by-law, remove the dedication of a highway that has been closed by a by-law under Subsection 40(1)(a).

NOW THEREFORE the Council of the City of Surrey in open meeting assembled, ENACTS as follows:

1. That portion of road lying in Section 23 Township 1 New Westminster District shown outlined in heavy black line on a Reference Plan attached hereto, and forming part of this by-law, duly signed by the Mayor and Clerk, prepared by P.G. Isaak, B.C.L.S. on the 24th day of May, 2006 , and more particularly described as follows:

That portion of road dedicated on Plan 5388, called Parcel "A" and containing 475.4 square metres,

(hereinafter referred to as that portion of King George Highway)

shall be closed to traffic.

2. The dedication as highway be removed of said portion of King George Highway.
3. This By-law may be cited for all purposes as "Surrey Close and Remove the Dedication of Highway of a Portion of King George Highway By-law, 2006, No. 16108".

READ A FIRST, SECOND AND THIRD TIME on the 25th day of September, 2006.

NOTICE OF INTENTION

ADVERTISED on the 30th day of September and 1st day of October, 2006 and on the 7th and 8th day of October, 2006, in the SURREY LEADER/PEACE ARCH Community newspaper.

RECONSIDERED AND FINALLY ADOPTED, signed by the Mayor and Clerk, and sealed with the Corporate Seal on the 16th day of October, 2006.

\_\_\_\_\_ MAYOR

\_\_\_\_\_ CLERK

REFERENCE PLAN TO ACCOMPANY THE CITY OF SURREY  
 HIGHWAY DEDICATION CANCELLATION BYLAW NUMBER 16108  
 OF A PORTION OF ROAD DEDICATED BY PLAN 5388  
 SECTION 23, TOWNSHIP 1  
 NEW WESTMINSTER DISTRICT

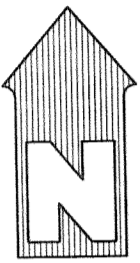
PURSUANT TO SECTION 120 OF THE LAND TITLE ACT &  
 PURSUANT TO SECTION 40 OF THE COMMUNITY CHARTER

PLAN BCP \_\_\_\_\_

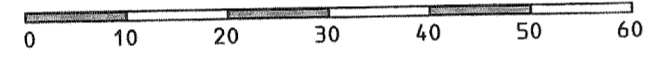
DEPOSITED IN THE LAND TITLE OFFICE  
 AT NEW WESTMINSTER, B. C.

THIS \_\_\_\_ DAY OF \_\_\_\_\_, 20\_\_

REGISTRAR



B. C. G. S. 92G. 007  
 SCALE 1: 750



INTEGRATED SURVEY AREA No. 1  
 CITY OF SURREY. NAD83 (CSRS)  
 GRID BEARINGS ARE DERIVED FROM OBSERVATION  
 BETWEEN CONTROL MONUMENTS 5743 AND 5742  
 THIS PLAN SHOWS GROUND-LEVEL MEASURED DISTANCES.  
 PRIOR TO COMPUTATION OF U. T. M. CO-ORDINATES  
 MULTIPLY BY COMBINED FACTOR OF 0.9995907  
 DISTANCES ARE IN METRES AND DECIMALS THEREOF,  
 UNLESS SHOWN OTHERWISE.

- ⊙ DENOTES CONTROL MONUMENT
- DENOTES STANDARD IRON POST FOUND
- DENOTES STANDARD IRON POST PLACED

CITY OF SURREY

MAYOR - DIANNE L. WATTS

CITY CLERK

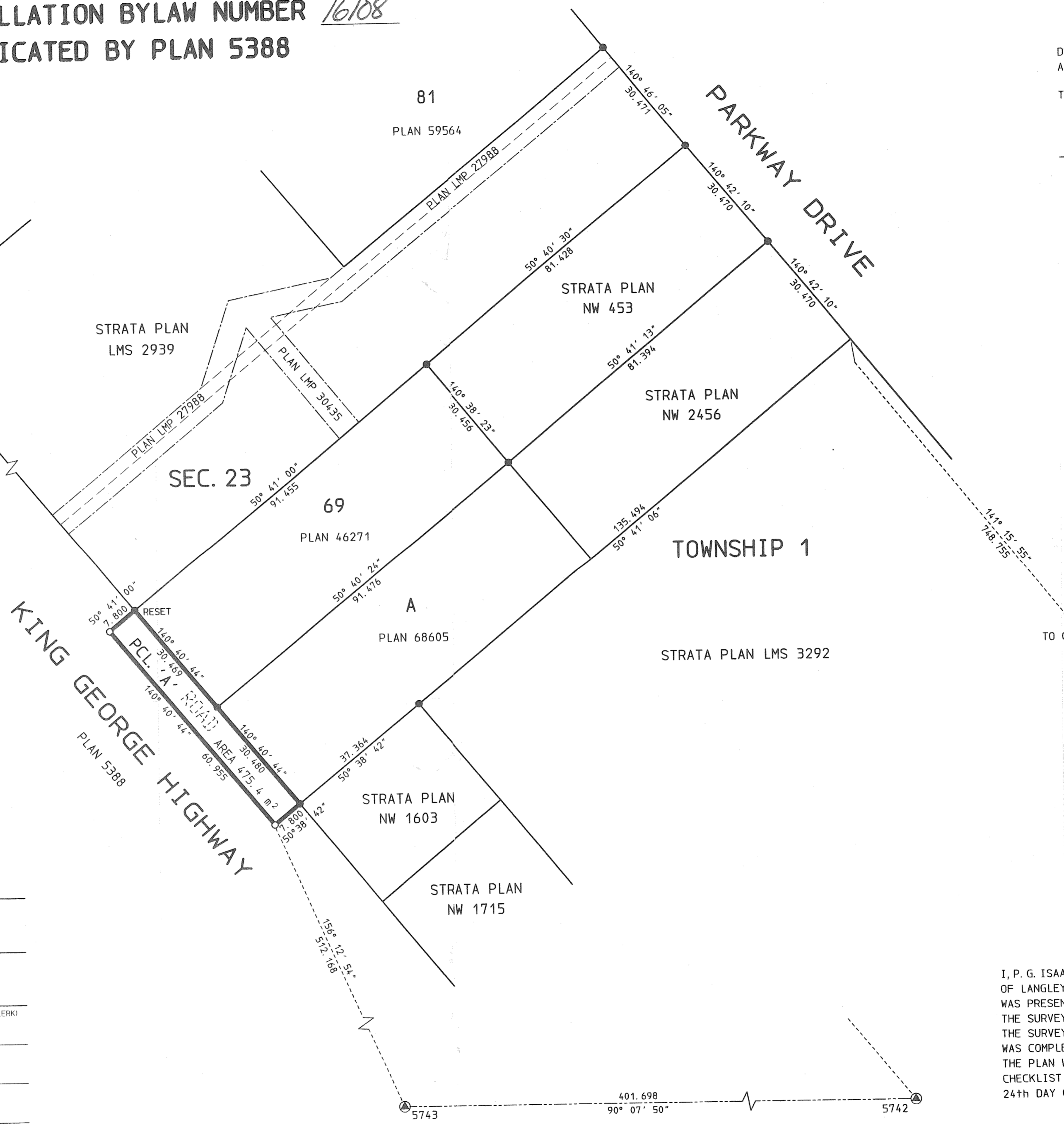
WITNESS (AS TO SIGNATURE OF CITY CLERK)

PRINTED NAME OF WITNESS

OCCUPATION

ADDRESS

**Isaak, Osman  
 & Associates**  
 B. C. LAND SURVEYORS  
 20609 LOGAN AVENUE  
 LANGLEY B. C. V3A-7R3  
 TEL: 604-533-2411  
 FILE: 14257-08. REF



TO OCM 5742

I, P. G. ISAAK, A BRITISH COLUMBIA LAND SURVEYOR  
 OF LANGLEY, BRITISH COLUMBIA, CERTIFY THAT I  
 WAS PRESENT AT AND PERSONALLY SUPERINTENDED  
 THE SURVEY REPRESENTED BY THIS PLAN AND THAT  
 THE SURVEY AND PLAN ARE CORRECT. THE SURVEY  
 WAS COMPLETED ON THE 24th DAY OF MAY, 2006  
 THE PLAN WAS COMPLETED AND CHECKED, AND THE  
 CHECKLIST FILED UNDER ECP-48894 ON THE  
 24th DAY OF MAY, 2006

*P. G. Isaak* B.C.L.S.

THIS PLAN LIES WITHIN THE GREATER VANCOUVER REGIONAL DISTRICT