

CITY OF SURREY

BY-LAW NO. 16060

A By-law to close and to remove the dedication
of a highway of a portion of Robson Road.
.....

WHEREAS pursuant to Subsection 40(1)(a) of the *Community Charter*, S.B.C. 2003, c. 26, the Council may, by by-law, close all or part of a highway that is vested in the municipality to all or some types of traffic;

AND WHEREAS pursuant to Section 40(2) of the *Community Charter*, S.B.C. 2003, c. 26, the Council may, by by-law, remove the dedication of a highway that has been closed by a by-law under Subsection 40(1)(a).

NOW THEREFORE the Council of the City of Surrey in open meeting assembled, ENACTS as follows:

1. That portion of road lying in District Lot 12 Group 2 New Westminster District, shown outlined in heavy black line on a Reference Plan attached hereto, and forming part of this by-law, duly signed by the Mayor and Clerk, prepared by Christopher Cryderman, B.C.L.S. on the 20th day of June, 2006, and more particularly described as follows:

That portion of road dedicated by Plan BCP593, called Parcel A and containing 0.3639 hectares,

(hereinafter referred to as that portion of Robson Road)

shall be closed to traffic.

2. The dedication as highway be removed of said portion of Robson Road.
3. This By-law may be cited for all purposes as "Surrey Close and Remove the Dedication of Highway of a Portion of Robson Road By-law, 2006, No. 16060".

READ A FIRST, SECOND AND THIRD TIME on the 10th day of July, 2006.

NOTICE OF INTENTION

ADVERTISED on the 15th and 16th day of July and on the 22nd and 23rd day of July, 2006, in the SURREY LEADER/PEACE ARCH Community newspaper.

RECONSIDERED AND FINALLY ADOPTED, signed by the Mayor and Clerk, and sealed with the Corporate Seal on the 24th day of July, 2006.

_____ MAYOR

_____ CLERK

REFERENCE PLAN TO ACCOMPANY THE CITY OF SURREY
 HIGHWAY DEDICATION CANCELLATION BY-LAW NO. 16060
 OVER ROAD SHOWN ON PLAN BCP593,
 DISTRICT LOT 12, GROUP 2, NEW WESTMINSTER DISTRICT
 PURSUANT TO SECTION 120 OF THE LAND TITLE ACT
 AND SECTION 40 OF THE COMMUNITY CHARTER

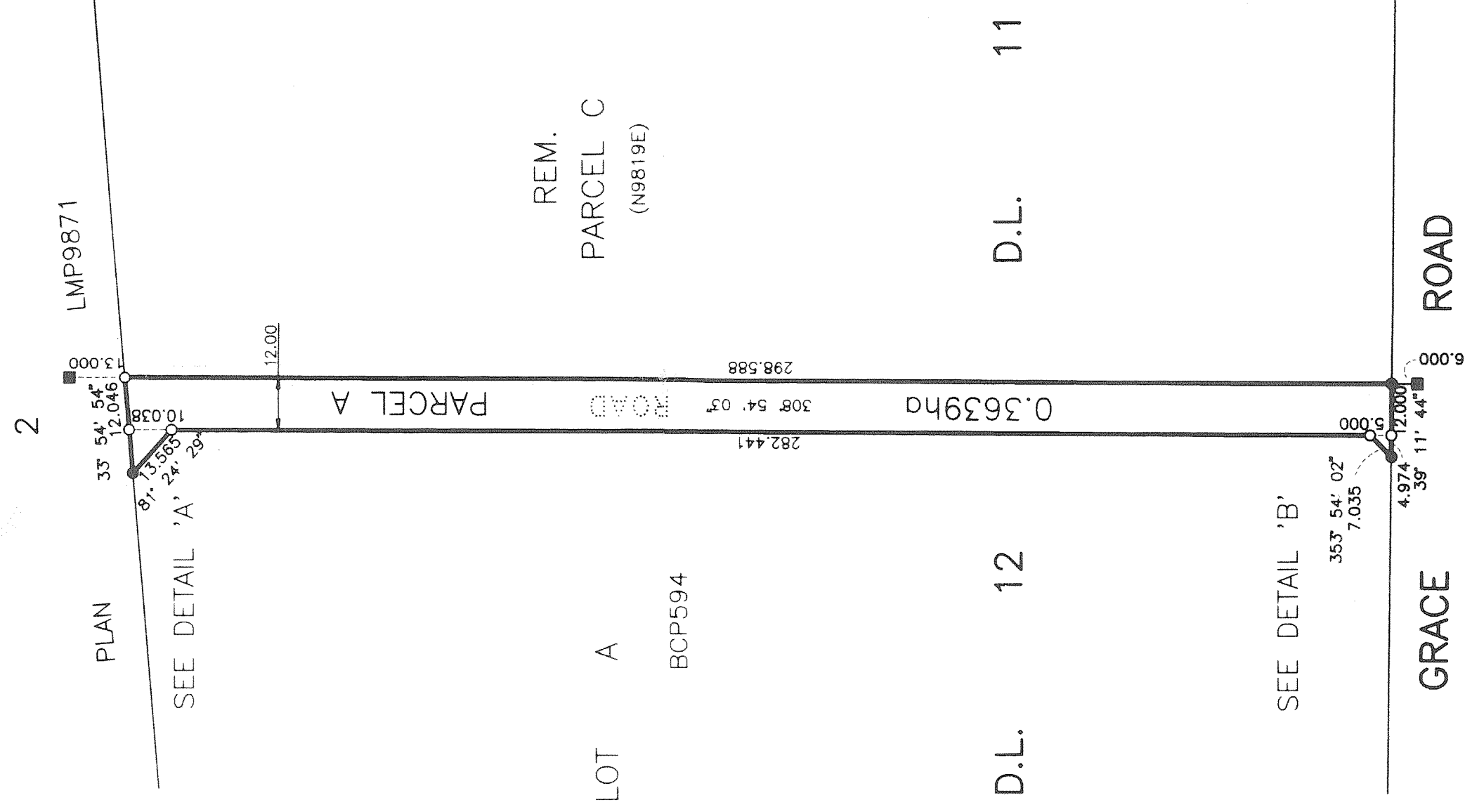
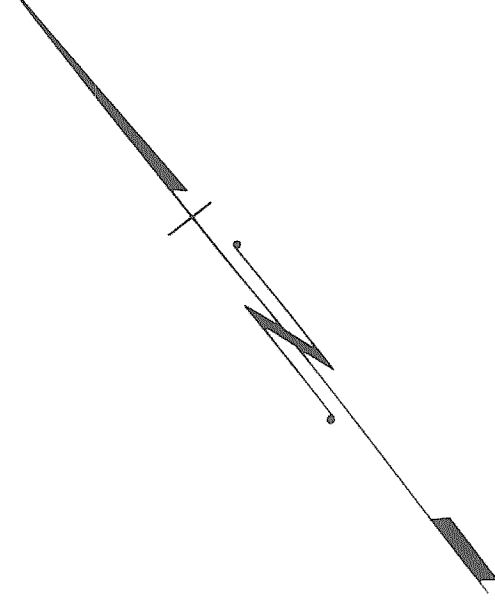
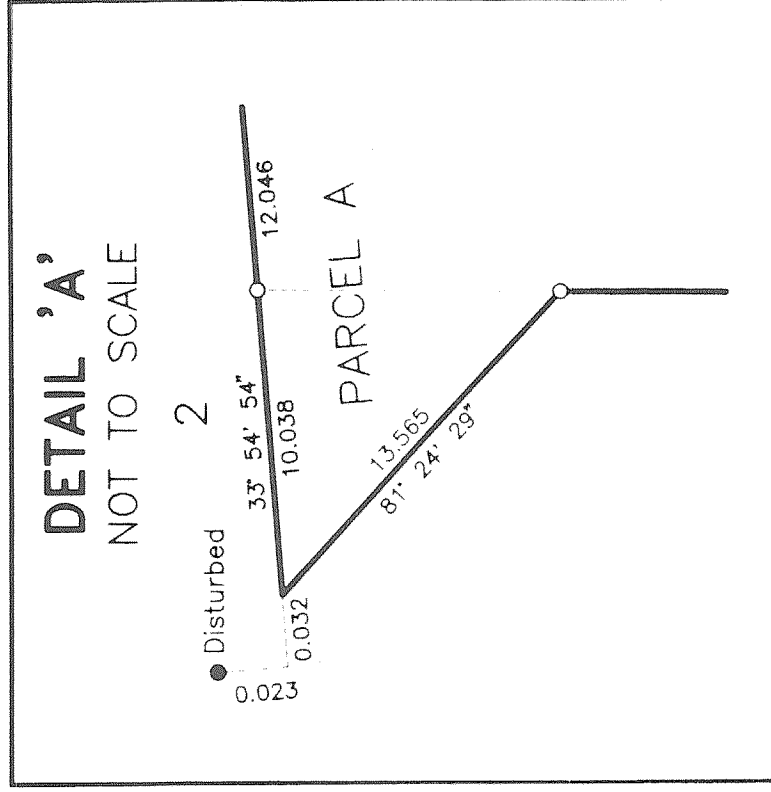
PLAN BCP

DEPOSITED IN THE LAND TITLE OFFICE
 AT NEW WESTMINSTER, B.C. THIS
 DAY OF _____, 2006.

REGISTRAR

B.C.G.S. 92G-016

SCALE 1:1250



LOT A
 PLAN BCP594

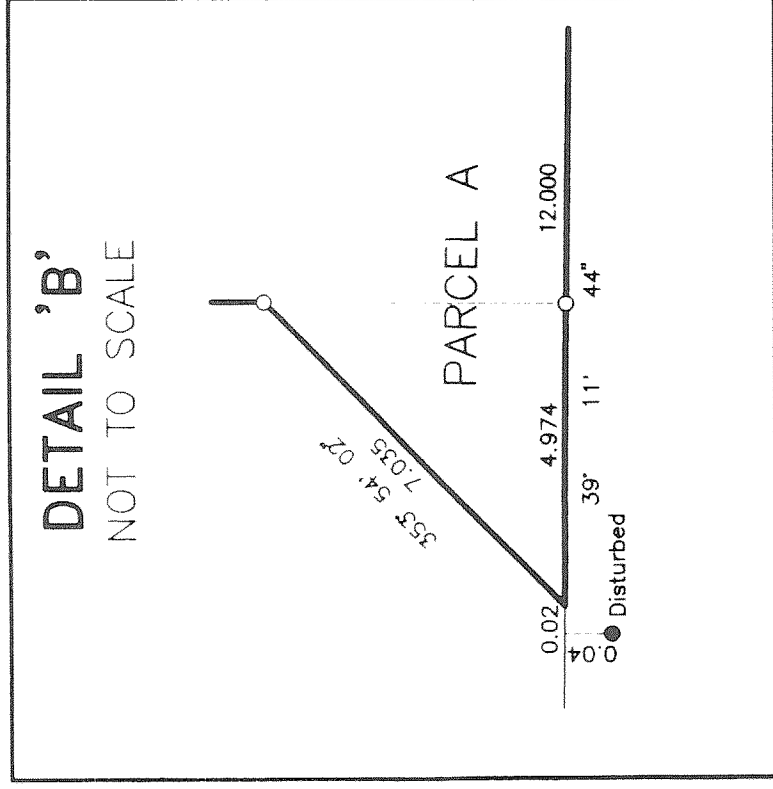
REM.
 PARCEL C
 (N9819E)

D.L. 12

D.L. 11

BOOK OF REFERENCE	DESCRIPTION	AREA
PARCEL 'A', D.L. 12, GP. 2, N.W.D., PLAN BCP		0.3639ha

DETAIL 'B'
 NOT TO SCALE



SEE DETAIL 'B'

GRACE ROAD

LEGEND :

INTEGRATED SURVEY AREA NO. 1,
 CITY OF SURREY, NAD83 (CSRS)

GRID BEARINGS ARE DERIVED FROM PLAN BCP593.

ALL DISTANCES ARE IN METRES AND DECIMALS THEREOF.

THIS PLAN SHOWS HORIZONTAL GROUND-LEVEL DISTANCES EXCEPT WHERE OTHERWISE NOTED. TO COMPUTE GRID DISTANCES, MULTIPLY GROUND-LEVEL DISTANCES BY COMBINED FACTOR 0.99960095.

SYMBOLS

- FOUND
- PLACED
- LEAD PLUG
- STANDARD IRON POST

CITY OF SURREY

MAYOR: DIANNE WATTS

CITY CLERK: MARGARET JONES

WITNESS AS TO THE SIGNATURE OF THE CITY CLERK:

Occupation of Witness

Address of Witness

UNDERHILL & UNDERHILL
 PROFESSIONAL LAND SURVEYORS
 210A-3430 BRIGHTON AVENUE
 BURNABY, B.C. V5A 3H4
 TEL. (604) 732-3384

I, CHRISTOPHER S. CRYDERMAN, A BRITISH COLUMBIA LAND SURVEYOR, OF THE CITY OF BURNABY, IN BRITISH COLUMBIA, CERTIFY THAT I WAS PRESENT AT AND PERSONALLY SUPERINTENDED THE SURVEY REPRESENTED BY THIS PLAN, AND THAT THE SURVEY AND PLAN ARE CORRECT. THE FIELD SURVEY WAS COMPLETED ON THE 20th DAY OF JUNE, 2006. THE PLAN WAS COMPLETED AND CHECKED, AND THE CHECKLIST FILED UNDER #50266, ON THE 20th DAY OF JUNE, 2006

Christopher S. Cryderman
 B.C.L.S.