

CITY OF SURREY

BY-LAW NO. 16020

A By-law to close and to remove the dedication
of a highway of portions of 137B Street.
.....

WHEREAS pursuant to Subsection 40(1)(a) of the *Community Charter*, S.B.C. 2003, c. 26, the Council may, by by-law, close all or part of a highway that is vested in the municipality to all or some types of traffic;

AND WHEREAS pursuant to Section 40(2) of the *Community Charter*, S.B.C. 2003, c. 26, the Council may, by by-law, remove the dedication of a highway that has been closed by a by-law under Subsection 40(1)(a).

NOW THEREFORE the Council of the City of Surrey in open meeting assembled, ENACTS as follows:

1. Those portions of road lying in Section 35, Block 5 North, Range 2 West, New Westminster District, shown outlined in heavy black line on a Reference Plan attached hereto, and forming part of this by-law, duly signed by the Mayor and Clerk, prepared by Ken W. Schuurman, B.C.L.S. on the 23rd day of May, 2006, and more particularly described as follows:

That portion of road dedicated by Plan 14725, shown as Parcel "A" and containing 919.4 square metres,

That portion of road dedicated by Plan 17876, shown as Parcel "B" and containing 919.4 square metres,

(hereinafter referred to as those portions of 137B Street)

shall be closed to traffic.

2. The dedication as highway be removed of said portions of 137B Street.
3. This By-law may be cited for all purposes as "Surrey Close and Remove the Dedication of Highway of Portions of 137B Street between 96 Avenue and 97A Avenue By-law, 2006, No. 16020".

READ A FIRST, SECOND AND THIRD TIME on the 29th day of May, 2006.

NOTICE OF INTENTION

ADVERTISED on the 3rd and 4th day of June and on the 10th and 11th day June, 2006, in the SURREY LEADER/PEACE ARCH Community newspaper.

RECONSIDERED AND FINALLY ADOPTED, signed by the Mayor and Clerk, and sealed with the Corporate Seal on the 12th day of June, 2006.

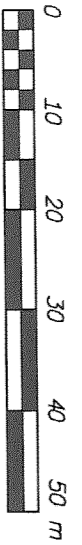
_____ MAYOR

_____ CLERK

h:\by-laws\adopted bylaws\2006\16020.doc

**REFERENCE PLAN TO ACCOMPANY CITY OF SURREY
HIGHWAY DEDICATION CANCELLATION BYLAW NO. 16080
OF A PORTION OF ROAD DEDICATED ON PLAN 14725
AND PLAN 17876, SECTION 35, BLOCK 5 NORTH,
RANGE 2 WEST, NEW WESTMINSTER DISTRICT**

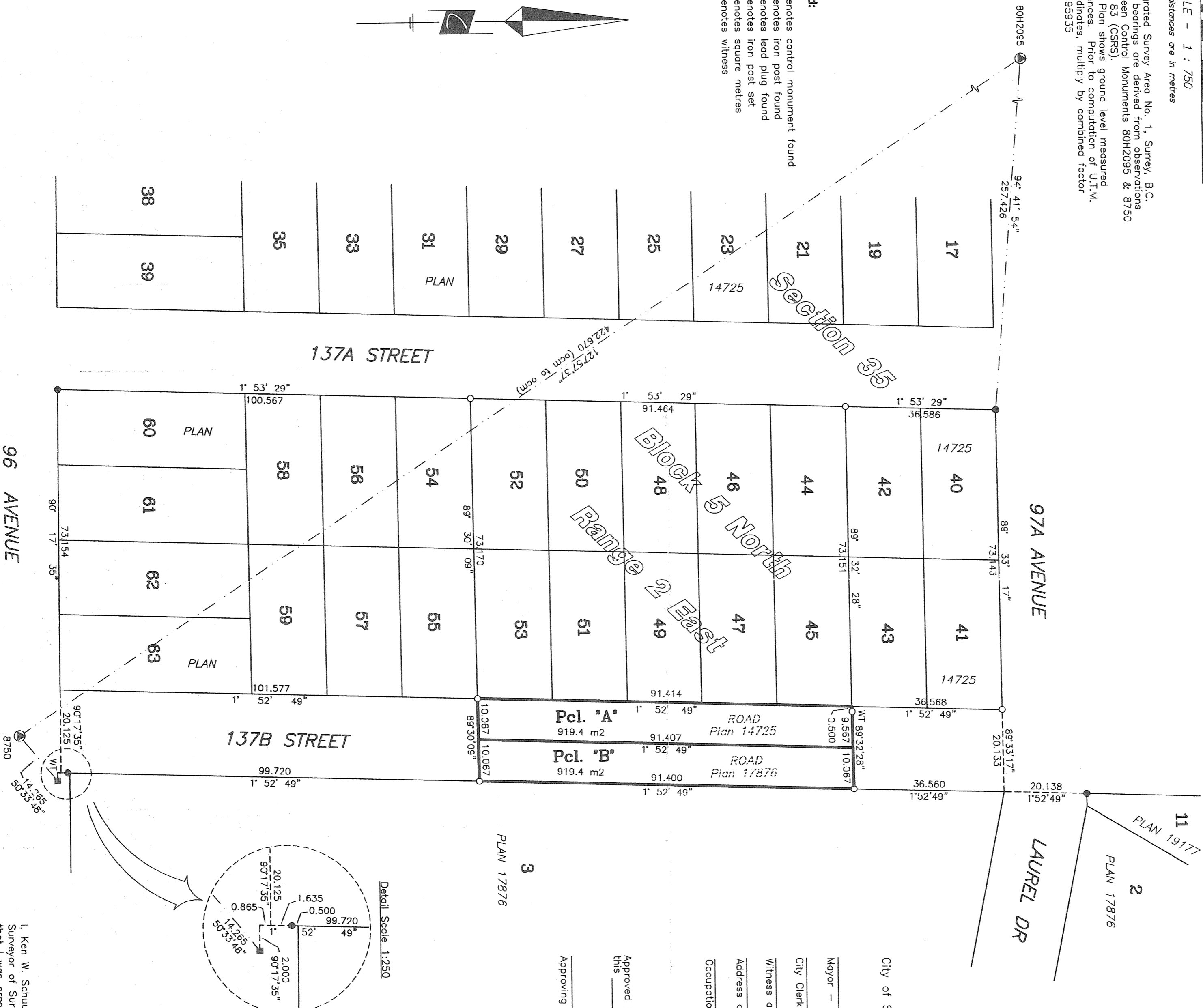
Pursuant to Section 120 of the Land Title Act
and Section 40 Community Charter
City of Surrey BCGS 92G.016



SCALE - 1 : 750
All distances are in metres

Integrated Survey Area No. 1, Surrey, B.C.
Grid bearings are derived from observations
between Control Monuments 80H2095 & 8750
NAD 83 (CSRS).
This Plan shows ground level measured
distances. Prior to computation of U.T.M.
coordinates, multiply by combined factor
0.9995935

- Legend:**
- Denotes control monument found
 - Denotes iron post found
 - Denotes lead plug found
 - Denotes iron post set
 - m2 Denotes square metres
 - WT Denotes witness



Parcel	Portion of Highway Dedication Cancellation	Area
A	Portion of Road in Section 35, BSN, R2W, N.W.D. Dedicated by Plan 14725	919.4 m2
B	Portion of Road in Section 35, BSN, R2W, N.W.D. Dedicated by Plan 17876	919.4 m2

PLAN BCP

Deposited in the Land Title Office at
New Westminster, B.C. this ____ day
of _____, 2006.

Registrar

Ref. No. _____

City of Surrey

Mayor - Dianne Watts

City Clerk - Margaret Jones

Witness as to signature of the City Clerk

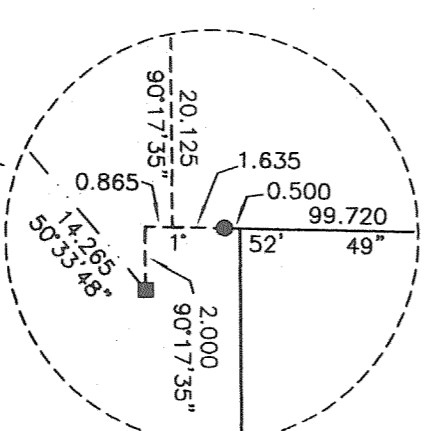
Address of Witness

Occupation of Witness

Approved under the Land Title Act
this ____ day of _____, 2006.

Approving Officer for the City of Surrey

Detail Scale 1:250



I, Ken W. Schuurman, a British Columbia Land
Surveyor of Surrey, in British Columbia certify
that I was present at and personally superintended
the survey represented by this plan, and that the
survey and plan are correct. The field survey
was completed on the 20th day of May, 2006.
The plan was completed and checked, and the
checklist filed under #48791, on the 23rd day
of May, 2006.

Ken W. Schuurman, B.C.L.S.

File: 4328-REF1