

CITY OF SURREY

BY-LAW NO. 15990

A By-law to close and to remove the dedication
of a highway of a portion of King George Highway.

.....

WHEREAS pursuant to Subsection 40(1)(a) of the *Community Charter*, S.B.C. 2003, c. 26, the Council may, by by-law, close all or part of a highway that is vested in the municipality to all or some types of traffic;

AND WHEREAS pursuant to Section 40(2) of the *Community Charter*, S.B.C. 2003, c. 26, the Council may, by by-law, remove the dedication of a highway that has been closed by a by-law under Subsection 40(1)(a).

NOW THEREFORE the Council of the City of Surrey in open meeting assembled, ENACTS as follows:

1. That portion of road lying in Section 21, Township 2 New Westminster District, shown outlined in heavy black line on a Reference Plan attached hereto, and forming part of this by-law, duly signed by the Mayor and Clerk, prepared by D.J. Dyck, B.C.L.S. on the 17th day of February, 2006, called Parcel "A" and more particularly described as follows:

That Portion of road dedicated by Plan 40896 and containing 634.7 square metres,

(hereinafter referred to as that portion of King George Highway)

shall be closed to traffic.

2. The dedication as highway be removed of said portion of King George Highway.
3. This By-law may be cited for all purposes as "Surrey Close and Remove the Dedication of Highway of a Portion of King George Highway at 72 Avenue By-law, 2006, No. 15990".

READ A FIRST, SECOND AND THIRD TIME on the 10th day of April, 2006.

NOTICE OF INTENTION

ADVERTISED on the 15th and 16th day of April and on the 22nd and 23rd day of April, 2006, in the SURREY LEADER/PEACE ARCH Community newspaper.

RECONSIDERED AND FINALLY ADOPTED, signed by the Mayor and Clerk, and sealed with the Corporate Seal on the 24th day of April, 2006.

_____ MAYOR

_____ CLERK

REFERENCE PLAN TO ACCOMPANY CITY OF SURREY HIGHWAY DEDICATION CANCELLATION BYLAW NUMBER 15990
 OF PORTIONS OF ROAD LYING IN SECTION 21 TOWNSHIP 2 NEW WESTMINSTER DISTRICT DEDICATED BY PLAN 40896

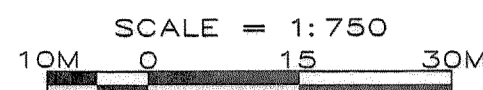
PLAN BCP

PURSUANT TO SECTION 120 L.T.A.
 PURSUANT TO SECTION 40 COMMUNITY CHARTER

CITY OF SURREY

"FOR ROAD CLOSURE PURPOSES"

B.C.G.S. 92G.016



"ALL DISTANCES ARE IN METRES"

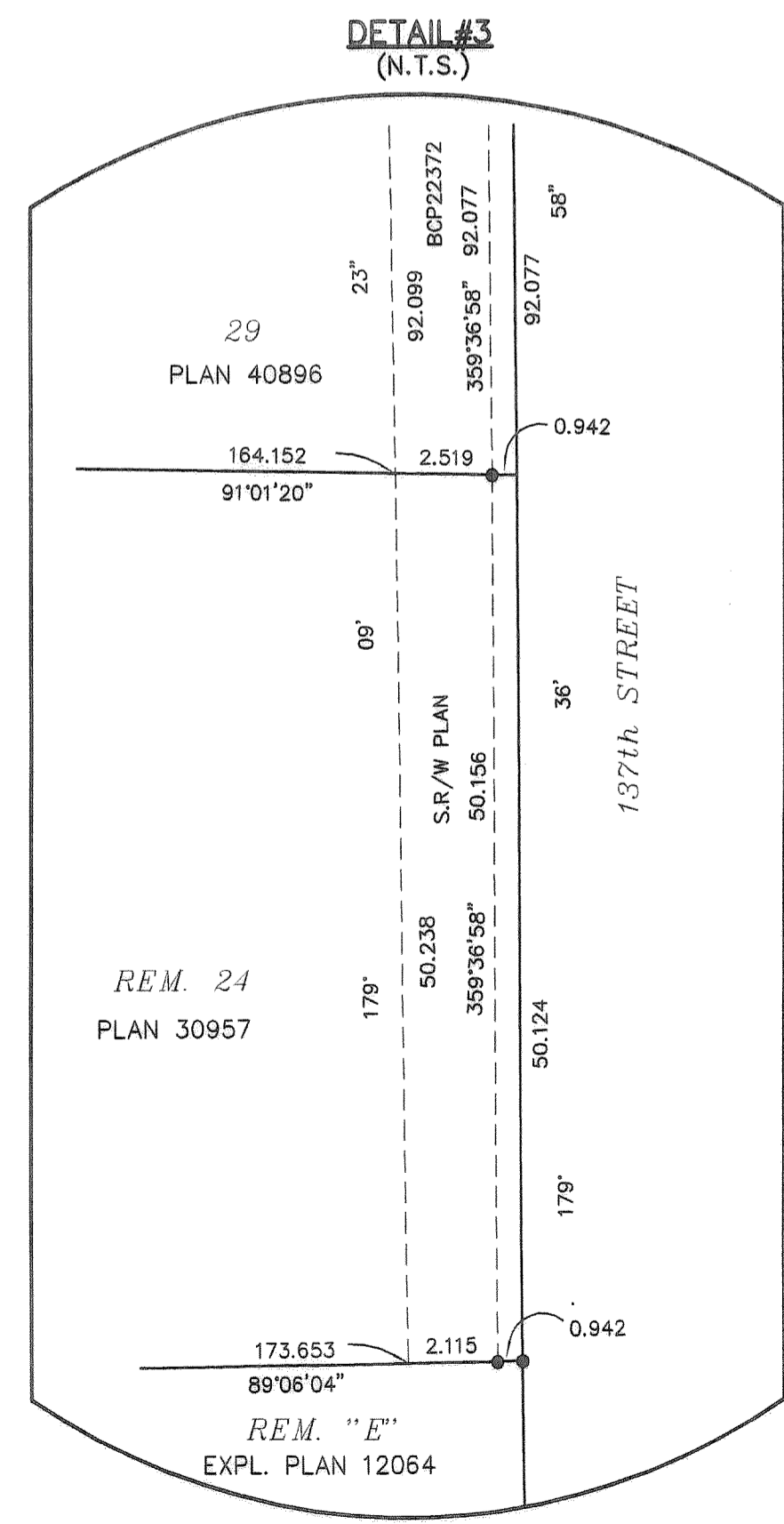
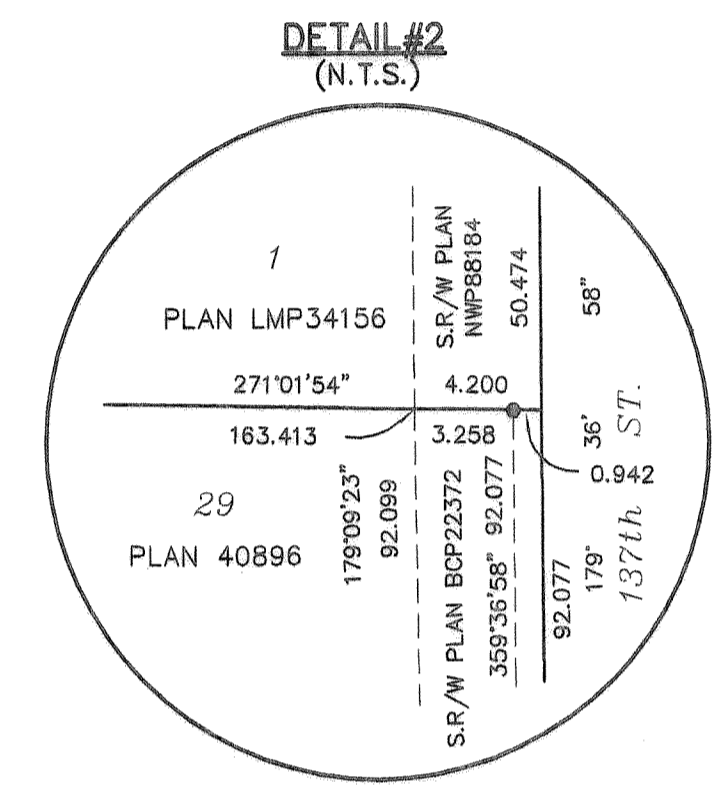
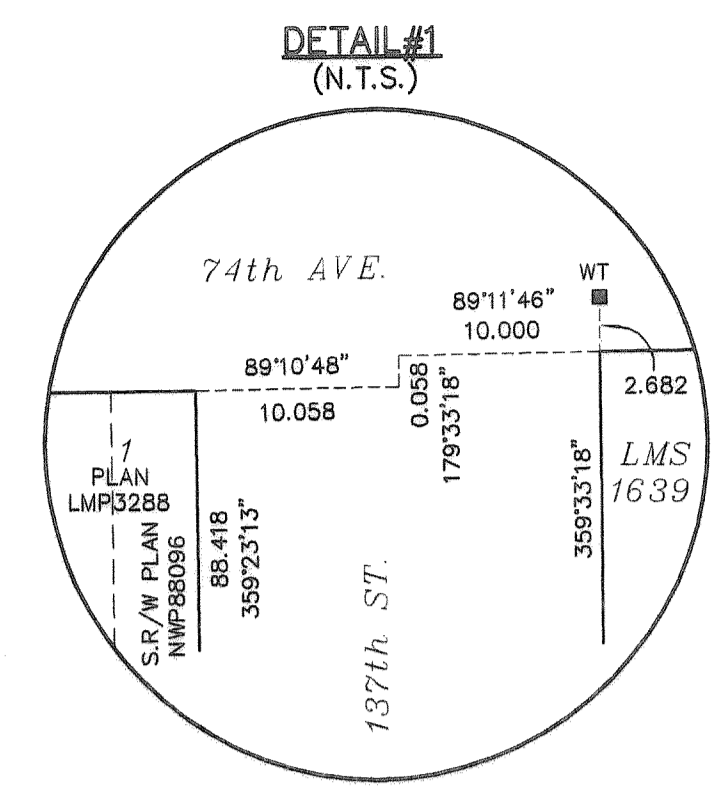
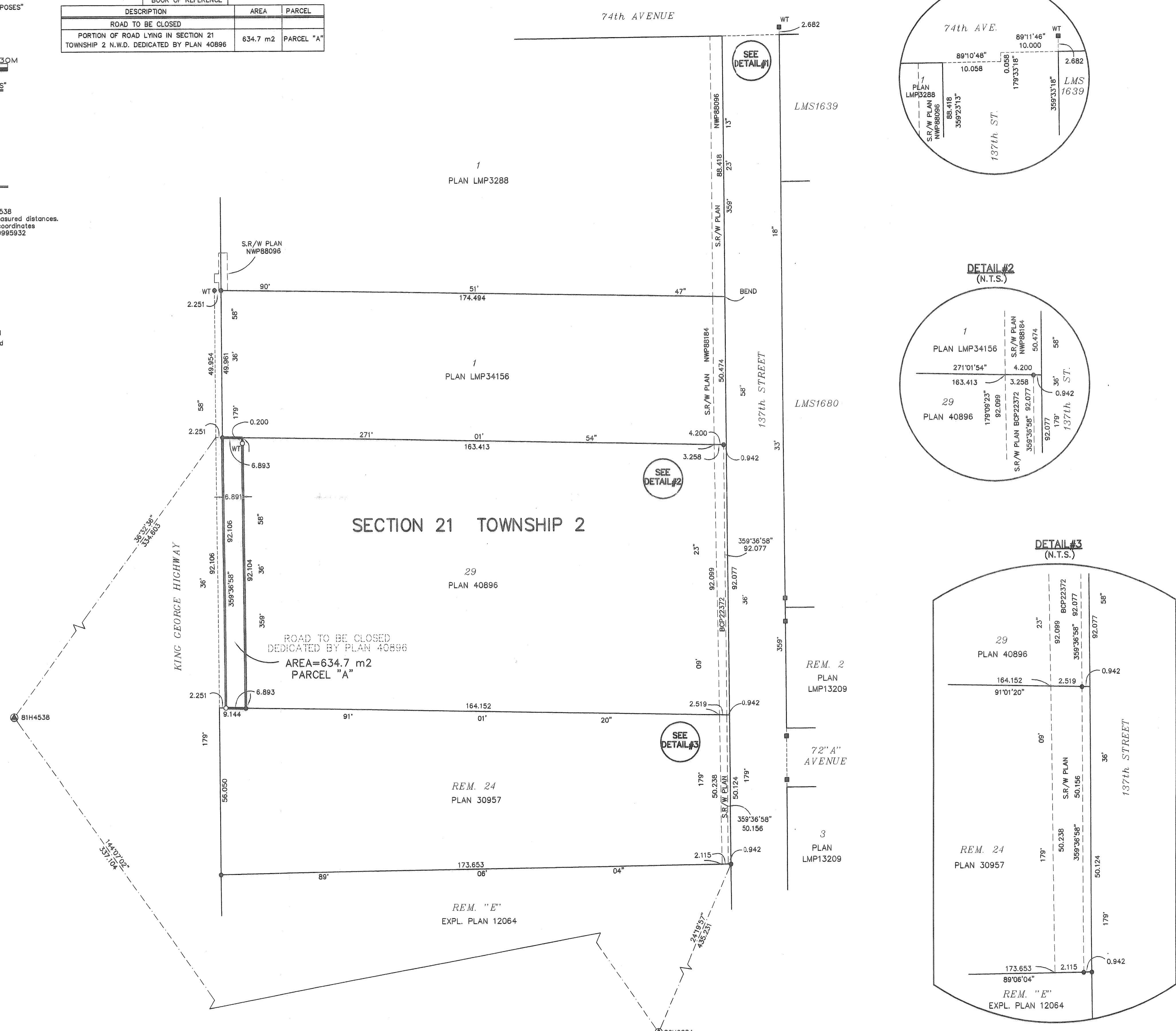
BOOK OF REFERENCE		
DESCRIPTION	AREA	PARCEL
ROAD TO BE CLOSED		
PORTION OF ROAD LYING IN SECTION 21 TOWNSHIP 2 N.W.D. DEDICATED BY PLAN 40896	634.7 m2	PARCEL "A"

INTEGRATED SURVEY AREA NO.1

City of Surrey
 Grid bearings derived from
 OCM# 80H2084 and OCM# 81H4538
 This plan shows ground level measured distances.
 Prior to computation of U.T.M. coordinates
 multiply by combined factor 0.9995932
 NAD83 CSRS (GVRD2005)

LEGEND

- standard iron post found
- standard iron post placed
- lead plug placed
- lead plug found
- ⊕ Control Monument
- WT Denotes Witness
- m2 Denotes Square Metres



Deposited and Registered in the Land Title
 Office at NEW WESTMINSTER, B.C.
 This ___ day of _____, 2006

Registrar

CITY OF SURREY

Dianne Watts
 MAYOR: DIANNE WATTS

Marg Jones
 Authorized Signatory
 City Clerk: MARG JONES

Susan Palmer
 Witness as to signature
 of the City Clerk
 14245-56 Avenue, Surrey, BC
 Address of Witness

Deputy City Clerk
 Occupation of Witness

I, D.J. Dyck, a British Columbia Land Surveyor, of Surrey,
 in British Columbia, certify that I was present at and personally
 superintended the survey represented by this plan and that the
 survey and plan are correct. The field survey was completed on
 the 17th day of FEBRUARY 2006
 The plan was completed and checked and the checklist filed under
 # 44601 on the 17th day of FEBRUARY 2006

D.J. Dyck
 SIGNATURE OF B.C.L.S.