

CITY OF SURREY

BY-LAW NO. 15954

A By-law to close and to remove the dedication
of a highway of a portion of Lane at 76A Avenue and 151A Street.

.....

WHEREAS pursuant to Subsection 40(1)(a) of the *Community Charter*, S.B.C. 2003, c. 26, the Council may, by by-law, close all or part of a highway that is vested in the municipality to all or some types of traffic;

AND WHEREAS pursuant to Section 40(2) of the *Community Charter*, S.B.C. 2003, c. 26, the Council may, by by-law, remove the dedication of a highway that has been closed by a by-law under Subsection 40(1)(a).

NOW THEREFORE the Council of the City of Surrey in open meeting assembled, ENACTS as follows:

1. That portion of lane lying in Section 22 Township 2 New Westminster District, shown outlined in heavy black line on a Reference Plan attached hereto, and forming part of this by-law, duly signed by the Mayor and Clerk, prepared by Raymond Janzen, B.C.L.S. on the 3rd day of January, 2006, and more particularly described as follows:

That Portion of lane dedicated by Plan 17795, shown as Parcel "A"
and containing 87.1 square metres,

(hereinafter referred to as that Portion of Lane)

shall be closed to traffic.

2. The dedication as highway be removed of said portion of Lane.
3. This By-law may be cited for all purposes as "Surrey Close and Remove the Dedication of Highway of a Portion of Lane at 76A Avenue and 151A Street By-law, 2006, No. 15954".

READ A FIRST, SECOND AND THIRD TIME on the 20th day of February, 2006.

NOTICE OF INTENTION

ADVERTISED on the 25th and 26th day of February and on the 4th and 5th day of March, 2006, in the SURREY LEADER/PEACE ARCH Community newspaper.

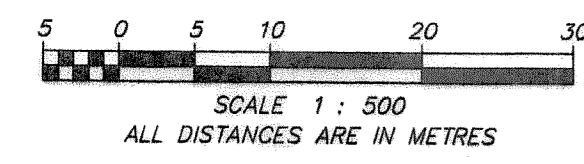
RECONSIDERED AND FINALLY ADOPTED, signed by the Mayor and Clerk, and sealed with the Corporate Seal on the 6th day of March, 2006.

_____ MAYOR

_____ CLERK

REFERENCE PLAN TO ACCOMPANY CITY OF SURREY
 HIGHWAY DEDICATION CANCELLATION BYLAW 15,954 OF PORTIONS OF:
 SECTION 22, TOWNSHIP 2,
 NEW WESTMINSTER DISTRICT,
 SHOWN AS LANE ON PLAN 17795

B.C.G.S. 92G.016



PURSUANT TO SECTION 120 OF THE LAND TITLE ACT
 AND SECTION 40 OF THE COMMUNITY CHARTER

PLAN BCP

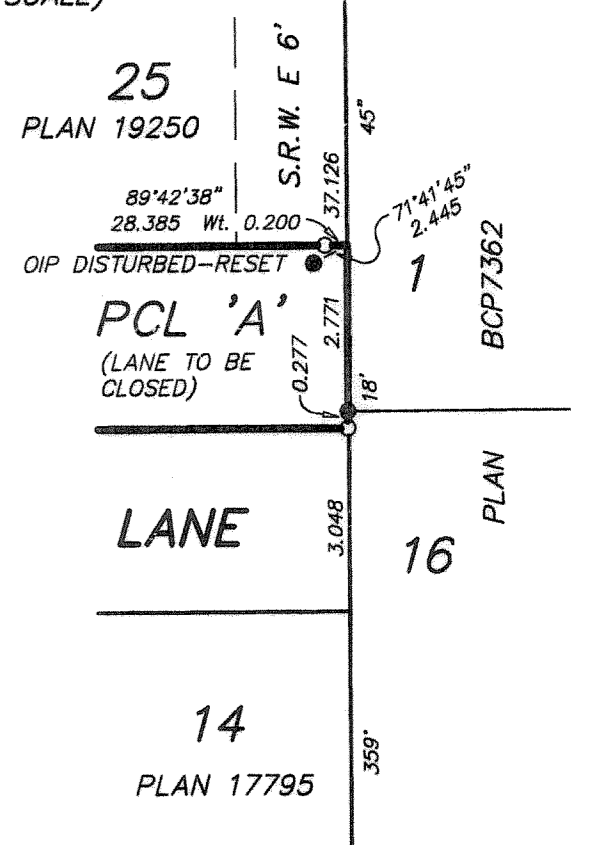
DEPOSITED IN THE LAND TITLE OFFICE
 AT NEW WESTMINSTER, B.C.
 THIS DAY OF 2006

REGISTRAR

REF:



DETAIL
 (NOT TO SCALE)



- LEGEND:**
- INDICATES CONTROL MONUMENT
 - INDICATES STANDARD IRON POST FOUND
 - ⊙ INDICATES UNREGISTERED STANDARD IRON POST FOUND
 - INDICATES STANDARD IRON POST PLACED
 - INDICATES LEAD PLUG PLACED
 - W. DENOTES WITNESS

GRID BEARINGS ARE DERIVED FROM OBSERVATIONS BETWEEN CONTROL MONUMENTS 5857 AND 5453, AS SHOWN ON PLAN BCP19846 INTEGRATED SURVEY AREA #1, CITY OF SURREY.
 DISTANCES SHOWN ARE GROUND LEVEL MEASURED DISTANCES. PRIOR TO COMPUTATION OF U.T.M. CO-ORDINATES MULTIPLY BY THE MEAN COMBINED FACTOR 0.9996009(NAD 83 C.S.R.S.).

MURRAY & ASSOCIATES
 201-12448 82nd AVENUE
 SURREY, B.C.
 V3W 3E9
 (604) 597-9188

THIS PLAN LIES WITHIN THE GREATER VANCOUVER REGIONAL DISTRICT
 (CITY OF SURREY)

OWNER: CITY OF SURREY
 MAYOR: DIANNE WATTS
 CITY CLERK: MARGARET JONES
 WITNESS AS TO SIGNATURE OF THE CITY CLERK
 ADDRESS OF WITNESS
 OCCUPATION OF WITNESS

I, RAYMOND HAROLD JANZEN, A BRITISH COLUMBIA LAND SURVEYOR, OF DELTA, IN BRITISH COLUMBIA, CERTIFY THAT I WAS PRESENT AT AND PERSONALLY SUPERINTENDED THE SURVEY REPRESENTED BY THIS PLAN, AND THAT THE SURVEY AND PLAN ARE CORRECT.
 THE FIELD SURVEY WAS COMPLETED ON THE 3rd DAY OF JANUARY, 2006.
 THE PLAN WAS COMPLETED AND CHECKED, AND THE CHECKLIST FILED UNDER ECP #43114 ON THE 13th DAY OF JANUARY, 2006.

[Signature]
 B. C. L. S.
 FILE 9130-01