

CITY OF SURREY

BY-LAW NO. 15884

A By-law to close and to remove the dedication
of a highway of a portion of 136 Street and portions of
Chantrell Park Drive.

.....

WHEREAS pursuant to Subsection 40(1)(a) of the *Community Charter*, S.B.C. 2003, c. 26, the Council may, by by-law, close all or part of a highway that is vested in the municipality to all or some types of traffic;

AND WHEREAS pursuant to Section 40(2) of the *Community Charter*, S.B.C. 2003, c. 26, the Council may, by by-law, remove the dedication of a highway that has been closed by a by-law under Subsection 40(1)(a).

NOW THEREFORE the Council of the City of Surrey in open meeting assembled, ENACTS as follows:

1. Those portions of road lying in Section 16 Township 1 New Westminster District shown outlined in heavy black line on a Reference Plan attached hereto, and forming part of this by-law, duly signed by the Mayor and Clerk, prepared by Gary A. Rowbotham, B.C.L.S. on the 15th day of November, 2005, and more particularly described as follows:

That portion of road dedicated by Plan LMP15918, called Parcel A and containing 70 square metres,

That portion of road dedicated by Plan LMP16388, called Parcel B and containing 184 square metres,

That portion of road dedicated by Plan LMP16393, called Parcel C and containing 0.137 hectares,

That portion of road dedicated by Plan LMP18839, called Parcel D and containing 41 square metres,

That portion of road dedicated on Plan 7336, called Parcel E and containing 0.303 hectares,

(hereinafter referred to as Portions of Chantrell Park Drive and a portion of 136 Street)

shall be closed to traffic.

2. The dedication as highway be removed of said portions of Chantrell Park Drive and portion of 136 Street.
3. This By-law may be cited for all purposes as "Surrey Close and Remove the Dedication of Highway of a Portion of 136 Street at 20 Avenue and Portions of Chantrell Park Drive By-law, 2005, No. 15884".

READ A FIRST, SECOND AND THIRD TIME on the 28th day of November, 2005.

NOTICE OF INTENTION

ADVERTISED on the 3rd and 4th day of December and on the 10th and 11th day of December, 2005, in the SURREY LEADER/PEACE ARCH Community newspaper.

RECONSIDERED AND FINALLY ADOPTED, signed by the Mayor and Clerk, and sealed with the Corporate Seal on the 12th day of December, 2005.

_____ MAYOR

_____ CLERK

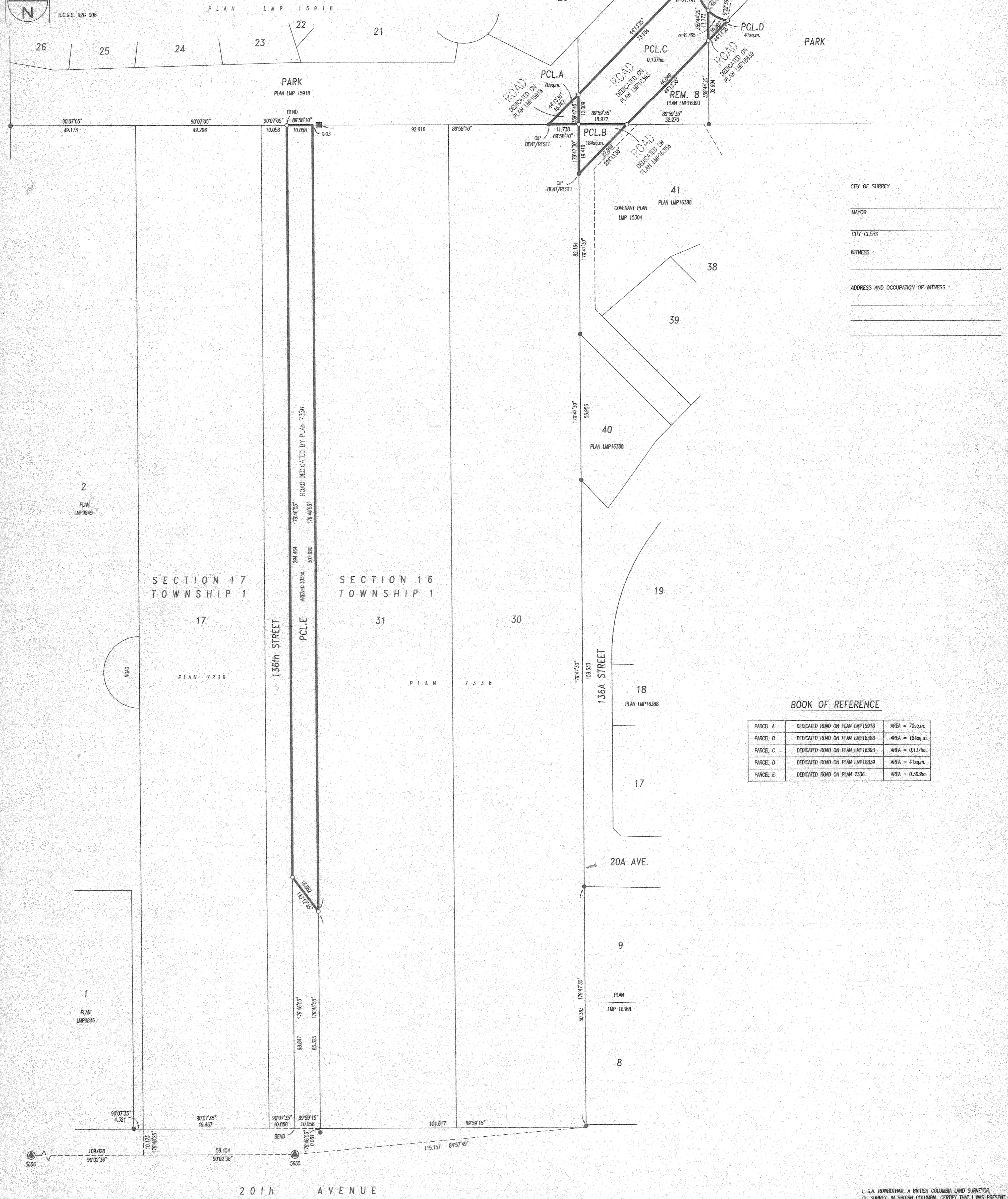
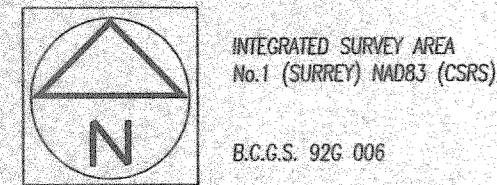
REFERENCE PLAN TO ACCOMPANY CITY OF SURREY HIGHWAY DEDICATION CANCELLATION
 BYLAW No. 15884 OF PORTIONS OF ROAD LYING IN SECTION 16,
 TOWNSHIP 1, NEW WESTMINSTER DISTRICT, COMPRISING:

PLAN BCP _____

- i) A PORTION OF ROAD DEDICATED ON PLAN LMP15918
- ii) A PORTION OF ROAD DEDICATED ON PLAN LMP16388
- iii) A PORTION OF ROAD DEDICATED ON PLAN LMP16393
- iv) A PORTION OF ROAD DEDICATED ON PLAN LMP18839
- v) A PORTION OF ROAD DEDICATED ON PLAN 7336

PURSUANT TO SECTION 120 L.T.A. AND SECTION 40 COMMUNITY CHARTER

SCALE - 1:750



DEPOSITED IN THE LAND TITLE OFFICE AT
 NEW WESTMINSTER, B.C.
 THIS _____ DAY OF _____, 2005
 DEPUTY REGISTRAR
 THIS PLAN LIES WITHIN THE GREATER VANCOUVER REGIONAL DISTRICT

CITY OF SURREY
 MAYOR _____
 CITY CLERK _____
 WITNESS : _____
 ADDRESS AND OCCUPATION OF WITNESS : _____

BOOK OF REFERENCE

PARCEL	DEDICATED ROAD ON PLAN	AREA
PARCEL A	DEDICATED ROAD ON PLAN LMP15918	AREA = 70sq.m.
PARCEL B	DEDICATED ROAD ON PLAN LMP16388	AREA = 184sq.m.
PARCEL C	DEDICATED ROAD ON PLAN LMP16393	AREA = 0.137ha.
PARCEL D	DEDICATED ROAD ON PLAN LMP18839	AREA = 41sq.m.
PARCEL E	DEDICATED ROAD ON PLAN 7336	AREA = 0.303ha.

- LEGEND
- INDICATES OLD IRON POST FOUND
 - OLD LEAD PLUG FOUND
 - IRON POST SET
 - LEAD PLUG SET
 - NON STANDARD ROUND IRON POST FOUND
 - OLD CONTROL MONUMENT FOUND
 - UNREGISTERED
 - sq. m. SQUARE METRES
 - ha. HECTARES

GRID BEARINGS ARE DERIVED FROM OLD CONTROL MONUMENTS 5655 AND 5656.

THIS PLAN SHOWS GROUND LEVEL MEASURED DISTANCES. PRIOR TO COMPUTATION OF UTM COORDINATES, MULTIPLY BY THE COMBINED FACTOR 0.9995895.

I, G.A. ROWBOTHAM, A BRITISH COLUMBIA LAND SURVEYOR, OF SURREY, IN BRITISH COLUMBIA, CERTIFY THAT I WAS PRESENT AT AND PERSONALLY SUPERINTENDED THE SURVEY REPRESENTED BY THIS PLAN, AND THAT THE SURVEY AND PLAN ARE CORRECT.
 THE FIELD SURVEY WAS COMPLETED ON THE 15TH DAY OF NOVEMBER, 2005. THE PLAN WAS COMPLETED AND CHECKED, AND THE CHECKLIST FILED UNDER # 40352 ON THE 15TH DAY OF NOVEMBER, 2005.
 G.A. Rowbotham
 B.C.L.S.