

CITY OF SURREY

BY-LAW NO. 15824

A By-law to close and to remove the dedication
of a highway of a portion of 84 Avenue.
.....

WHEREAS pursuant to Subsection 40(1)(a) of the *Community Charter*, S.B.C. 2003, c. 26, the Council may, by by-law, close all or part of a highway that is vested in the municipality to all or some types of traffic;

AND WHEREAS pursuant to Section 40(2) of the *Community Charter*, S.B.C. 2003, c. 26, the Council may, by by-law, remove the dedication of a highway that has been closed by a by-law under Subsection 40(1)(a).

NOW THEREFORE the Council of the City of Surrey in open meeting assembled, ENACTS as follows:

1. That portion of road lying in Section 25, Township 2, New Westminster District, shown outlined in heavy black line on a Reference Plan attached hereto, and forming part of this by-law, duly signed by the Mayor and Clerk, prepared by Ron Esson, B.C.L.S. on the 23rd day of August, 2005 and more particularly described as follows:

That portion of road dedicated on Plan 2425, containing 124 square metres, and called Parcel A,

(hereinafter referred to as that portion of 84 Avenue)

shall be closed to traffic.

2. The dedication as highway be removed of said portion of 84 Avenue.
3. This By-law may be cited for all purposes as "Surrey Close and Remove the Dedication of Highway of a Portion of 84 Avenue at Fraser Highway By-law, 2005, No. 15824".

READ A FIRST, SECOND AND THIRD TIME on the 6th day of September, 2005.

NOTICE OF INTENTION

ADVERTISED on the 10th and 11th day of September and on the 17th and 18th day of September, 2005, in the SURREY LEADER/PEACE ARCH Community newspaper.

RECONSIDERED AND FINALLY ADOPTED, signed by the Mayor and Clerk, and sealed with the Corporate Seal on the 19th day of September, 2005.

_____ MAYOR

_____ CLERK

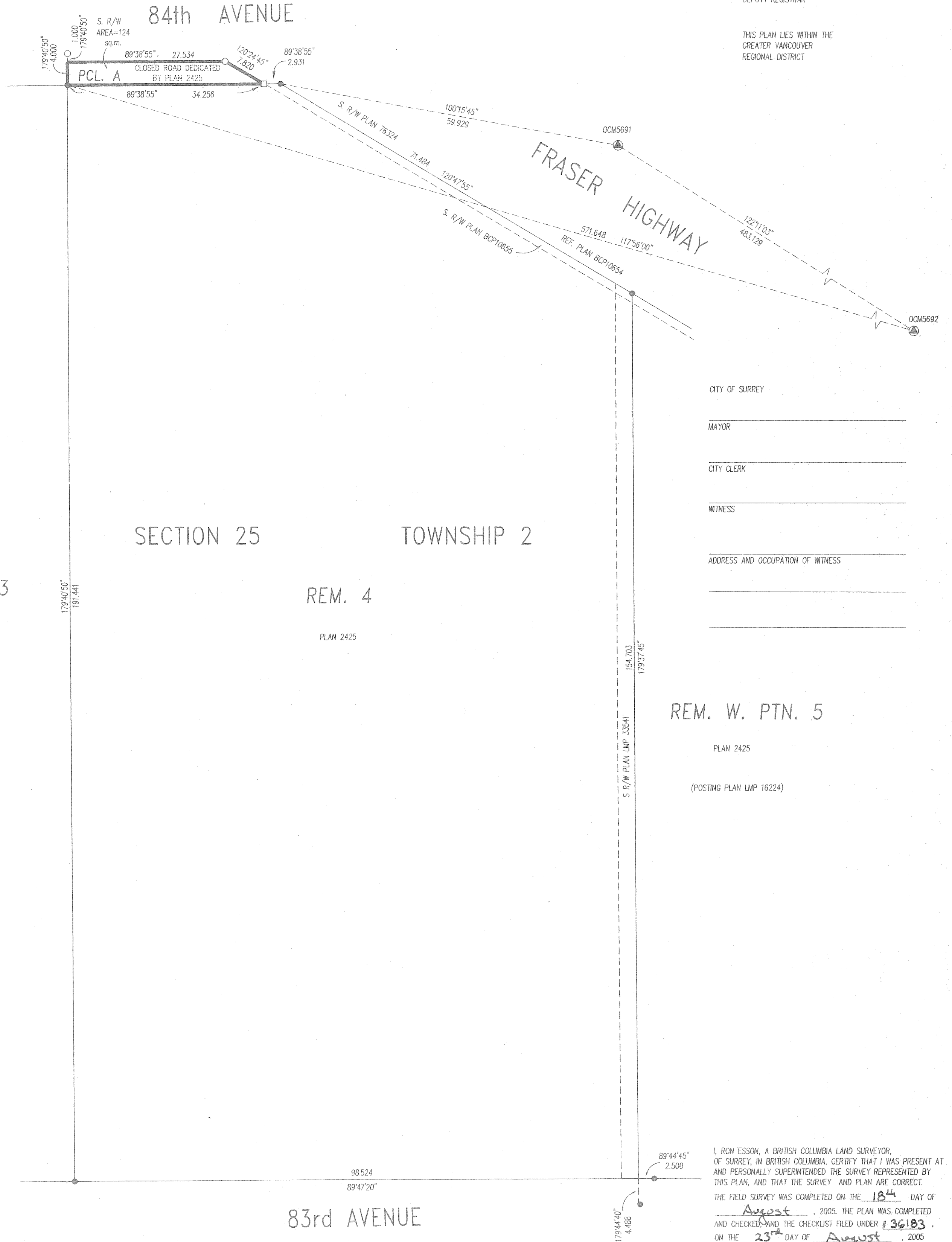
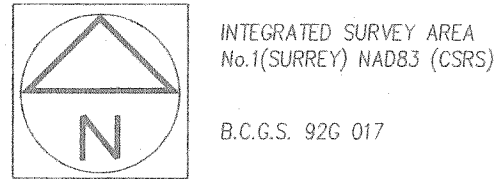
REFERENCE PLAN TO ACCOMPANY CITY OF SURREY HIGHWAY DEDICATION
 CANCELLATION BYLAW No. 15824 OF A PORTION OF ROAD LYING IN
 SECTION 25, TOWNSHIP 2, NEW WESTMINSTER DISTRICT, DEDICATED BY PLAN 2425

PLAN BCP _____

DEPOSITED IN THE LAND TITLE OFFICE AT
 NEW WESTMINSTER, B.C.
 THIS _____ DAY OF _____ 2005

PURSUANT TO SECTION 120 L.T.A. AND SECTION 40 COMMUNITY CHARTER

SCALE - 1:500



CITY OF SURREY
 MAYOR _____
 CITY CLERK _____
 WITNESS _____
 ADDRESS AND OCCUPATION OF WITNESS _____

REM. W. PTN. 5
 PLAN 2425
 (POSTING PLAN LMP 16224)

- LEGEND
- INDICATES OLD IRON POST FOUND
 - " OLD LEAD PLUG FOUND
 - " IRON POST SET
 - " LEAD PLUG SET
 - ▲ " OLD CONTROL MONUMENT FOUND
 - u " UNREGISTERED
 - sq. m " SQUARE METRES
 - ha. " HECTARES

GRID BEARINGS ARE DERIVED FROM
 OLD CONTROL MONUMENTS 5691 AND 5692

THIS PLAN SHOWS GROUND LEVEL MEASURED DISTANCES.
 PRIOR TO COMPUTATION OF UTM COORDINATES, MULTIPLY
 BY THE COMBINED FACTOR 0.9995962.

I, RON ESSON, A BRITISH COLUMBIA LAND SURVEYOR,
 OF SURREY, IN BRITISH COLUMBIA, CERTIFY THAT I WAS PRESENT AT
 AND PERSONALLY SUPERINTENDED THE SURVEY REPRESENTED BY
 THIS PLAN, AND THAT THE SURVEY AND PLAN ARE CORRECT.
 THE FIELD SURVEY WAS COMPLETED ON THE 18th DAY OF
August, 2005. THE PLAN WAS COMPLETED
 AND CHECKED, AND THE CHECKLIST FILED UNDER 136183,
 ON THE 23rd DAY OF August, 2005

RJ Esmon
 B.C.L.S.