

CITY OF SURREY

BY-LAW NO. 15692

A By-law to close and to remove the dedication
of a highway of a portion of Lane.

.....

WHEREAS pursuant to Subsection 40(1)(a) of the *Community Charter*, S.B.C. 2003, c. 26, the Council may, by by-law, close all or part of a highway that is vested in the municipality to all or some types of traffic;

AND WHEREAS pursuant to Section 40(2) of the *Community Charter*, S.B.C. 2003, c. 26, the Council may, by by-law, remove the dedication of a highway that has been closed by a by-law under Subsection 40(1)(a).

NOW THEREFORE the Council of the City of Surrey in open meeting assembled, ENACTS as follows:

1. That portion of road lying in Section 14, Township 1, New Westminster District, dedicated by Plan 13439, shown outlined in heavy black line on a Reference Plan attached hereto, and forming part of this by-law, duly signed by the Mayor and Clerk, prepared by G.A. Rowbotham, B.C.L.S. on the 21st day of March, 2004, and more particularly described as follows:

That Portion of road dedicated by Plan 13439, containing 223 square metres and called Parcel A,

(hereinafter referred to as that portion of Lane)

shall be closed to traffic.

2. The dedication as highway be removed of said portion of Lane.
3. This By-law may be cited for all purposes as "Surrey Close and Remove the Dedication of Highway of a Portion of Lane at 152 Street between 17A Avenue and 18 Avenue By-law, 2005, No. 15692".

READ A FIRST, SECOND AND THIRD TIME on the 4th day of April, 2005.

NOTICE OF INTENTION

ADVERTISED on the 9th and 10th day of April and on the 16th and 17th day of April, 2005, in the SURREY LEADER/PEACE ARCH Community newspaper.

RECONSIDERED AND FINALLY ADOPTED, signed by the Mayor and Clerk, and sealed with the Corporate Seal on the 18th day of April, 2005.

_____ MAYOR

_____ CLERK

h:\by-laws\adopted\2005\15692.doc

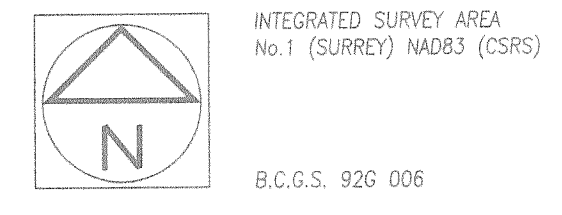
REFERENCE PLAN TO ACCOMPANY CITY OF SURREY HIGHWAY DEDICATION CANCELLATION
 BYLAW No. 15692 OF A PORTION OF LANE LYING IN SECTION 14, Tp. 1,
 NEW WESTMINSTER DISTRICT DEDICATED BY PLAN 13439

PLAN BCP _____

DEPOSITED IN THE LAND TITLE OFFICE AT
 NEW WESTMINSTER, B.C.
 THIS _____ DAY OF _____ 2005

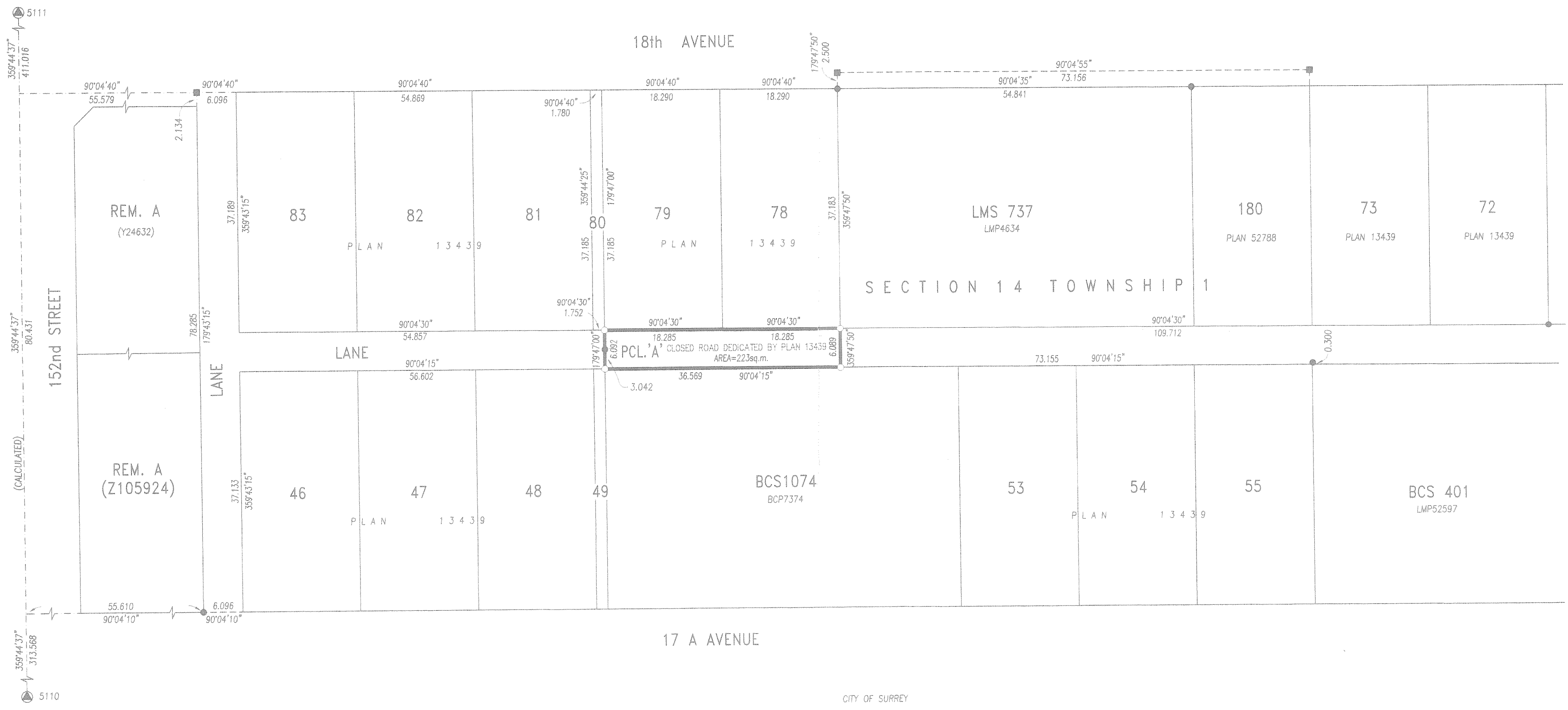
PURSUANT TO SEC. 120 L.T.A.

SCALE- 1:500



DEPUTY REGISTRAR _____

THIS PLAN LIES WITHIN THE GREATER VANCOUVER REGIONAL DISTRICT



- LEGEND
- INDICATES OLD IRON POST FOUND
 - " " OLD LEAD PLUG FOUND
 - " " IRON POST SET
 - " " LEAD PLUG SET
 - ▲ " " OLD CONTROL MONUMENT FOUND
 - U " " UNREGISTERED
 - sq. m " " SQUARE METRES
 - ha. " " HECTARES

THIS PLAN SHOWS GROUND LEVEL MEASURED DISTANCES.
 PRIOR TO COMPUTATION OF UTM COORDINATES, MULTIPLY
 BY THE COMBINED FACTOR 0.9995970.

GRID BEARINGS ARE DERIVED FROM OLD
 CONTROL MONUMENTS 5110 AND 5111.

CITY OF SURREY

MAYOR _____

CITY CLERK _____

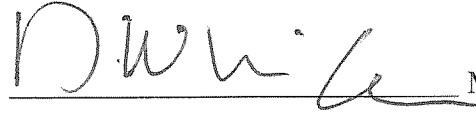
WITNESS : _____

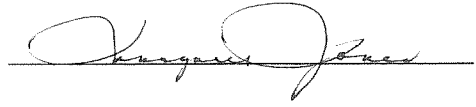
ADDRESS AND OCCUPATION OF WITNESS : _____

I, G.A. ROWBOTHAM, A BRITISH COLUMBIA LAND SURVEYOR,
 OF SURREY, IN BRITISH COLUMBIA, CERTIFY THAT I WAS PRESENT AT
 AND PERSONALLY SUPERINTENDED THE SURVEY REPRESENTED BY
 THIS PLAN, AND THAT THE SURVEY AND PLAN ARE CORRECT.
 THE FIELD SURVEY WAS COMPLETED ON THE 18th DAY OF
MARCH, 2005. THE PLAN WAS COMPLETED
 AND CHECKED, AND THE CHECKLIST FILED UNDER # 28831,
 ON THE 21st DAY OF MARCH, 2005

G.A. Rowbotham
 B.C.L.S.

RECONSIDERED AND FINALLY ADOPTED, signed by the Mayor and Clerk, and sealed with the Corporate Seal on the 18th day of April, 2005.


MAYOR


CLERK