

CITY OF SURREY

BY-LAW NO. 15683

A By-law to close and to remove the dedication
of a highway of a portion of lane at 152 Street between
17A Avenue and 18 Avenue.

.....

WHEREAS pursuant to Subsection 40(1)(a) of the *Community Charter*, S.B.C. 2003, c. 26, the Council may, by by-law, close all or part of a highway that is vested in the municipality to all or some types of traffic;

AND WHEREAS pursuant to Section 40(2) of the *Community Charter*, S.B.C. 2003, c. 26, the Council may, by by-law, remove the dedication of a highway that has been closed by a by-law under Subsection 40(1)(a).

NOW THEREFORE the Council of the City of Surrey in open meeting assembled, ENACTS as follows:

1. That portion of road lying in Section 14 Township 1 New Westminster District, shown outlined in heavy black line on a Reference Plan attached hereto, and forming part of this by-law, duly signed by the Mayor and Clerk, prepared by Raymond Janzen, B.C.L.S. on the 9th day of February, 2005, and more particularly described as follows:

That portion of road dedicated on Plan 13439, containing
668.6 square metres and called Parcel A,

(hereinafter referred to as that portion of Lane)

shall be closed to traffic.

2. The dedication as highway be removed of said portion of Lane.
3. This By-law may be cited for all purposes as "Surrey Close and Remove the Dedication of Highway of a Portion of Lane at 152 Street between 17A Avenue and 18 Avenue By-law, 2005, No. 15683".

READ A FIRST, SECOND AND THIRD TIME on the 7th day of March, 2005.

NOTICE OF INTENTION

ADVERTISED on the 12th and 13th day of March and on the 19th and 20th day March of 2005, in the SURREY LEADER/PEACE ARCH Community newspaper.

RECONSIDERED AND FINALLY ADOPTED, signed by the Mayor and Clerk, and sealed with the Corporate Seal on the 4th day of April, 2005.

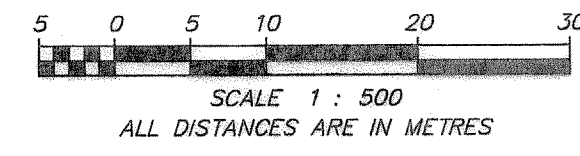
_____ MAYOR

_____ CLERK

h:\by-laws\adopted\2005\clk15683.blw.doc

REFERENCE PLAN TO ACCOMPANY CITY OF SURREY
HIGHWAY DEDICATION CANCELLATION BYLAW 15683 OF PORTIONS OF:
PART SECTION 14, TOWNSHIP 1,
NEW WESTMINSTER DISTRICT,
SHOWN AS ROAD ON PLAN 13439

B.C.G.S. 92G.006



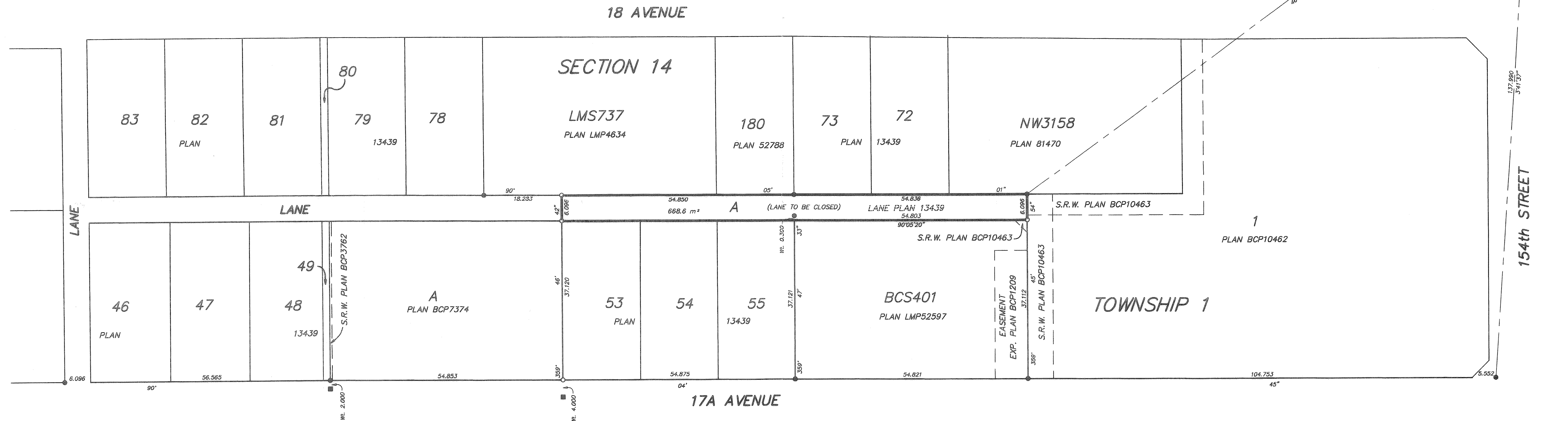
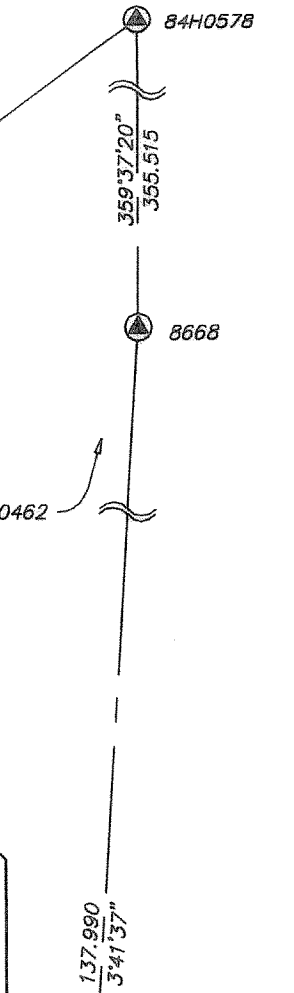
PURSUANT TO SECTION 120 LAND TITLE ACT

PLAN BCP

DEPOSITED IN THE LAND TITLE OFFICE
AT NEW WESTMINSTER, B.C.
THIS DAY OF _____, 2005.

REGISTRAR

REF:



LEGEND :

- INDICATES CONTROL MONUMENT FOUND
- INDICATES UNREGISTERED LEAD PLUG FOUND
- INDICATES STANDARD IRON POST FOUND
- INDICATES STANDARD IRON POST PLACED
- WR. DENOTES WITNESS

GRID BEARINGS ARE DERIVED FROM CONTROL MONUMENTS 8668 AND 84H0578, AS SHOWN ON PLAN BCP10462.
INTEGRATED SURVEY AREA #1, CITY OF SURREY.
DISTANCES SHOWN ARE GROUND LEVEL MEASURED DISTANCES. PRIOR TO COMPUTATION OF U.T.M. CO-ORDINATES MULTIPLY BY THE MEAN COMBINED FACTOR 0.9999902 (NAD 83 C.S.R.S.).

MURRAY & ASSOCIATES
201-1244B 82nd AVENUE
SURREY, B.C.
V3W 3E9
(604) 597-9189

CITY OF SURREY

MAYOR: DOUG McCALLUM

CITY CLERK: MARGARET JONES

WITNESS AS TO THE SIGNATURE OF THE CITY CLERK

OCCUPATION OF WITNESS

ADDRESS OF WITNESS

I, RAYMOND HAROLD JANZEN, A BRITISH COLUMBIA LAND SURVEYOR, OF DELTA, IN BRITISH COLUMBIA, CERTIFY THAT I WAS PRESENT AT AND PERSONALLY SUPERINTENDED THE SURVEY REPRESENTED BY THIS PLAN, AND THAT THE SURVEY AND PLAN ARE CORRECT.
THE FIELD SURVEY WAS COMPLETED ON THE 9th DAY OF FEBRUARY, 2005.
THE PLAN WAS COMPLETED AND CHECKED, AND THE CHECKLIST FILED UNDER ECP #27242 ON THE 9th DAY OF FEBRUARY, 2005.

THIS PLAN LIES WITHIN THE GREATER VANCOUVER REGIONAL DISTRICT
(CITY OF SURREY)

R. Janzen
B. C. L. S.
FILE 9106-3