

CITY OF SURREY

BY-LAW NO. 15662

A By-law to close and to remove the dedication
of highway of a portion of King George Highway.
.....

WHEREAS pursuant to Subsection 40(1)(a) of the *Community Charter*, S.B.C. 2003, c. 26, the Council may, by by-law, close all or part of a highway that is vested in the municipality to all or some types of traffic;

AND WHEREAS pursuant to Section 40(2) of the *Community Charter*, S.B.C. 2003, c. 26, the Council may, by by-law, remove the dedication of a highway that has been closed by a by-law under Subsection 40(1)(a).

NOW THEREFORE the Council of the City of Surrey in open meeting assembled, ENACTS as follows:

1. That portion of road lying in Section 33 Township 2 New Westminster District, shown outlined in heavy black line on a Reference Plan attached hereto, and forming part of this by-law, duly signed by the Mayor and Clerk, prepared by Grant Butler, B.C.L.S. on the 9th day of February, 2005, and more particularly described as follows:

That portion of road dedicated on Plan 78114, called Parcel A and containing 539 square metres,

(hereinafter referred to as that portion of King George Highway)

shall be closed to traffic.

2. The dedication as highway be removed of said portion of King George Highway.
3. This By-law may be cited for all purposes as "Surrey Close and Remove the Dedication of Highway of a Portion of King George Highway at 91 Avenue By-law, 2005, No. 15662."

READ A FIRST, SECOND AND THIRD TIME on the 21st day of February, 2005.

NOTICE OF INTENTION

ADVERTISED on the 26th and 27th day of February and on the 5th and 6th day of March, 2005 in the SURREY LEADER/PEACE ARCH Community newspaper.

RECONSIDERED AND FINALLY ADOPTED, signed by the Mayor and Clerk, and sealed with the Corporate Seal on the 7th day of March, 2005.

_____ MAYOR

_____ CLERK

h:\by-laws\adopted\2005\clk15662.blw.doc

REFERENCE PLAN TO ACCOMPANY
CITY OF SURREY ROAD CLOSURE
AND CANCELLATION BYLAW No. 15662
OF PART ROAD DEDICATED ON PLAN 78114
SECTION 33 TOWNSHIP 2
NEW WESTMINSTER DISTRICT

PLAN BCP

DEPOSITED IN THE LAND TITLE OFFICE
AT NEW WESTMINSTER, B.C., 2005
THIS DAY OF _____

REGISTRAR

PURSUANT TO SECTION 120 OF THE LAND TITLE ACT
AND SECTION 40 OF THE COMMUNITY CHARTER

B.C.G.S. 92G.016



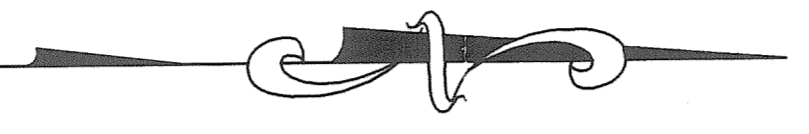
INTEGRATED SURVEY AREA NO. 1 (SURREY)
NAD83(CSRS)

THIS PLAN SHOWS HORIZONTAL GROUND-LEVEL MEASURED DISTANCES
EXCEPT WHERE OTHERWISE NOTED. TO COMPUTE GRID DISTANCES
MULTIPLY GROUND-LEVEL DISTANCES BY COMBINED FACTOR 0.99999735

LEGEND

GRID BEARINGS ARE DERIVED FROM OBSERVATIONS BETWEEN
CONTROL MONUMENTS 80H2092 AND 80H2091

- FOUND PLACED
- DENOTES CONTROL MONUMENT
 - DENOTES IRON POST
 - m2 DENOTES SQUARE METRES
 - Wt DENOTES WITNESS



CITY OF SURREY

MAYOR: DOUGLAS MCCALLUM

CITY CLERK:

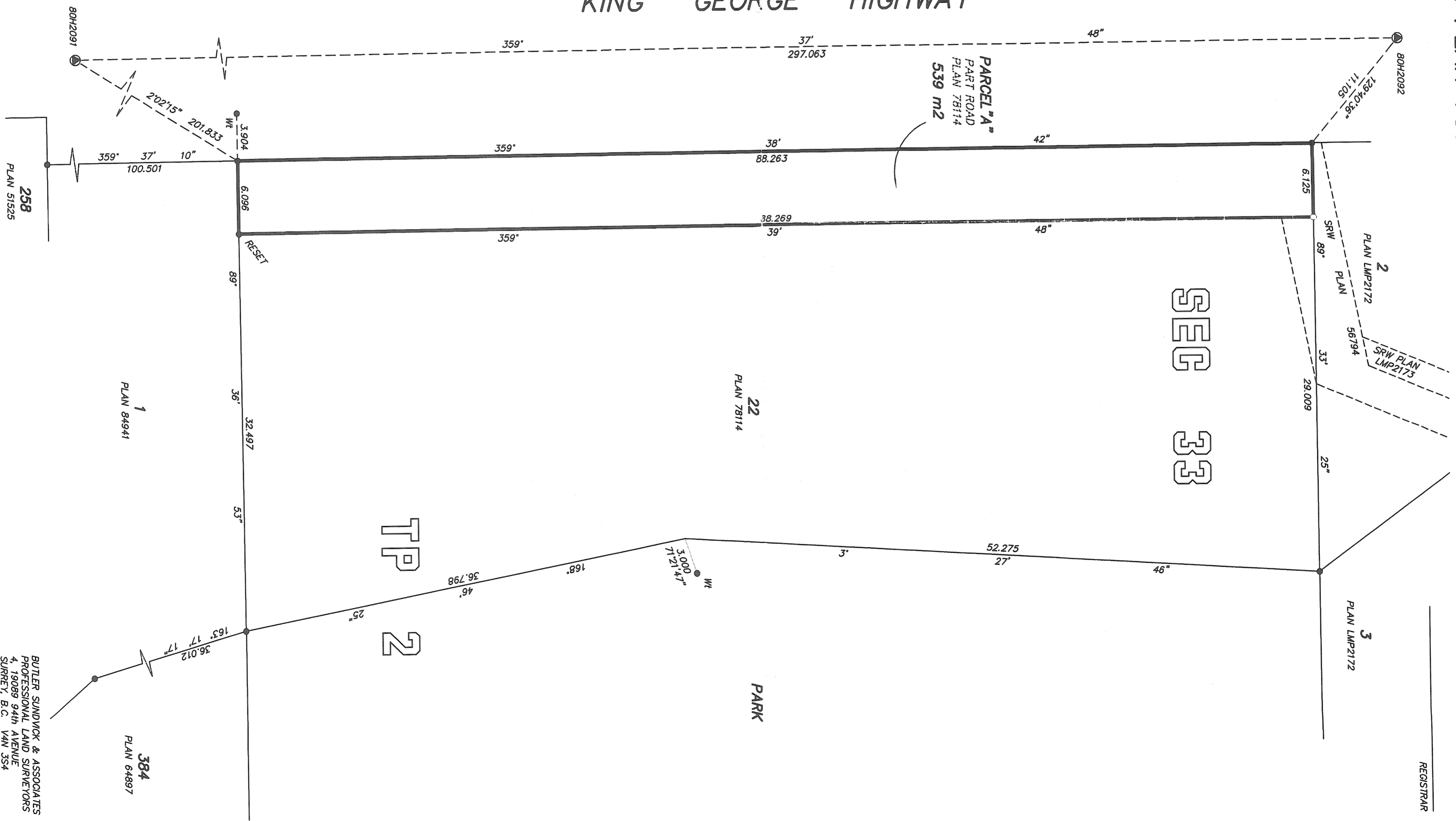
WITNESS AS TO BOTH SIGNATURE

Name _____
ADDRESS _____
OCCUPATION _____

I, GRANT BUTLER, A BRITISH COLUMBIA LAND SURVEYOR,
OF DELTA, BRITISH COLUMBIA, CERTIFY THAT I WAS
PRESENT AT AND PERSONALLY SUPERINTENDED THE SURVEY
REPRESENTED BY THIS PLAN, AND THAT THE SURVEY AND
PLAN ARE CORRECT. THE FIELD SURVEY WAS COMPLETED ON
THE 9th DAY OF FEBRUARY, 2005. THE PLAN WAS COMPLETED
AND CHECKED, AND THE CHECKLIST FILED UNDER ECP #27281
ON THE 9th DAY OF FEBRUARY, 2005.

B.C.L.S.

THIS PLAN LIES WITHIN THE GREATER VANCOUVER REGIONAL DISTRICT



BUTLER SANDVICK & ASSOCIATES
PROFESSIONAL LAND SURVEYORS
4, 19089 94th AVENUE
SURREY, B.C. V4N 3S4
T: 604-513-9611 F: 604-513-2202
FILE : 3222
DWG : 3222-RD