

CITY OF SURREY

BY-LAW NO. 15646

A By-law to close and to remove the dedication
of a highway of portions of 186 Street and 65A Avenue.

.....
WHEREAS pursuant to Subsection 40(1)(a) of the *Community Charter*, S.B.C. 2003, c. 26,
the Council may, by by-law, close all or part of a highway that is vested in the municipality to all
or some types of traffic;

AND WHEREAS pursuant to Section 40(2) of the *Community Charter*, S.B.C. 2003, c. 26, the
Council may, by by-law, remove the dedication of a highway that has been closed by a by-law
under Subsection 40(1)(a).

NOW THEREFORE the Council of the City of Surrey in open meeting assembled, ENACTS as
follows:

1. Those portions of road lying in Section 16 Township 8 New Westminster District, shown
outlined in heavy black line on a Reference Plan attached hereto, and forming part of this
by-law, duly signed by the Mayor and Clerk, prepared by Ken W. Schuurman, B.C.L.S.
on the 12th day of January, 2005, and more particularly described as follows:

That portion of road dedicated on Plan 16057, having an area of
904.5 square metres and called Parcel A,

(Portion of 186 Street)

That portion of road dedicated by Plan 15080, having an area of
739.6 square metres and called Parcel B,

(Portion of 186 Street)

That portion of road dedicated by Plan 18906, having an area of
0.180 hectares and called Parcel C,

(Portion of 65A Avenue)

(hereinafter referred to as those portions of 186 Street and 65A Avenue)

shall be closed to traffic.

2. The dedication as highway be removed of said portions of 186 Street and 65A Avenue.
3. This By-law may be cited for all purposes as "Surrey Close and Remove the Dedication
of Highway of Portions of 65A Avenue and 186 Street By-law, 2005, No. 15646".

READ A FIRST, SECOND AND THIRD TIME on the 7th day of February, 2005.

NOTICE OF INTENTION

ADVERTISED on the 12th and 13th day of February and on the 19th and 20th day of February, 2005, in the SURREY LEADER/PEACE ARCH Community newspaper.

RECONSIDERED AND FINALLY ADOPTED, signed by the Mayor and Clerk, and sealed with the Corporate Seal on the 21st day of February, 2005.

_____ MAYOR

_____ CLERK

REFERENCE PLAN TO ACCOMPANY CITY OF SURREY HIGHWAY DEDICATION CANCELLATION BYLAW NO. 15646 OF PORTIONS OF ROAD LYING IN SECTION 16, TOWNSHIP 8, N.W.D.

Plan BCP

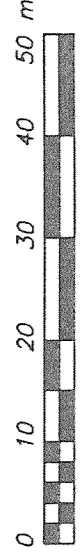
Deposited In The Land Title Office
At New Westminster, B.C.
This _____ Day Of _____, 2005

Pursuant to Section 120 of the Land Title Act & Section 40 Community Charter

B.C.G.S. 92G.017

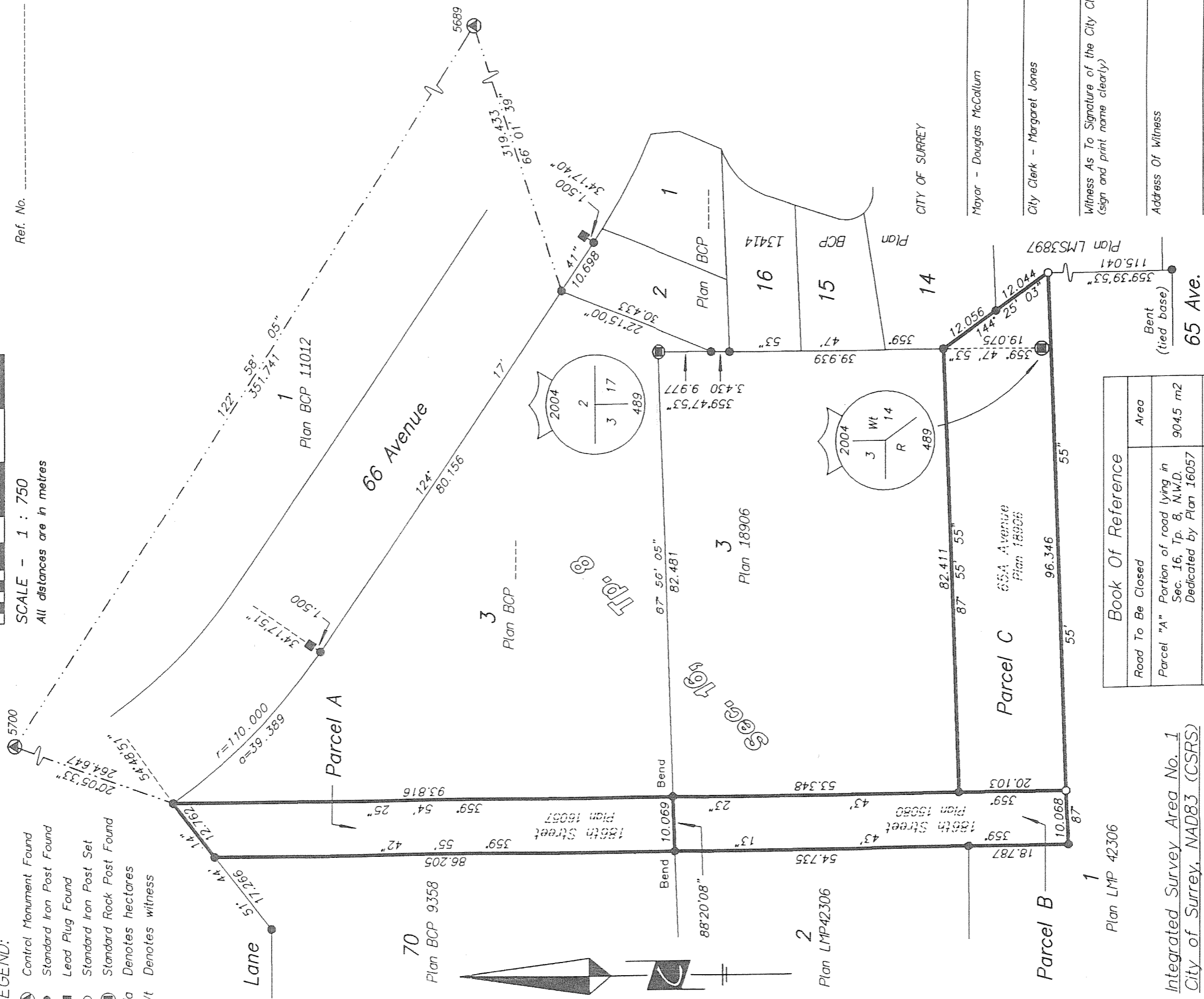
LEGEND:

- ▲ Control Monument Found
- Standard Iron Post Found
- Lead Plug Found
- Standard Iron Post Set
- ⊙ Standard Rock Post Found
- Ha Denotes hectares
- Wt Denotes witness



SCALE - 1 : 750
All distances are in metres

Ref. No. _____
Registrar

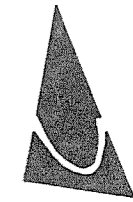


Book Of Reference	
Road To Be Closed	Area
Parcel "A" Portion of road lying in Sec. 16, Tp. 8, N.W.D. Dedicated by Plan 16057	904.5 m ²
Parcel "B" Portion of road lying in Sec. 16, Tp. 8, N.W.D. Dedicated by Plan 15080	739.6 m ²
Parcel "C" Portion of road lying in Sec. 16, Tp. 8, N.W.D. Dedicated by Plan 18906	0.180 ha

Integrated Survey Area No. 1
City of Surrey, NAD83 (CSRS)

This Plan Shows Ground Level Measured Distances. Prior To Computation Of U.T.M. Coordinates, Multiply By Combined Factor 0.9995982.
Grid Bearings Are Derived From Observations Between Control Monuments 5689 and 5700.

Cameron Land Surveying Ltd.
B.C. Land Surveyors
Unit 203-6333-148th St.
Surrey, B.C. V3S 3C3
Phone: 604-597-3777
Fax: 604-597-3783



Ken Schuurman

B.C.L.S.

I, Ken W. Schuurman, a British Columbia Land Surveyor, of Surrey, in British Columbia, certify that I was present at and personally supervised the survey represented by this plan, and that the survey and plan are correct. The field survey was completed on the 24th day of December, 2004. The plan was completed and checked, and the checklist filed under #26204, on the 12th day of January, 2005.

Witness As To Signature of the City Clerk
(sign and print name clearly)
Address Of Witness
Occupation Of Witness

Mayor - Douglas MacCallum
City Clerk - Margaret Jones

This plan lies within the Greater Vancouver Regional District

File: A4182PC1